



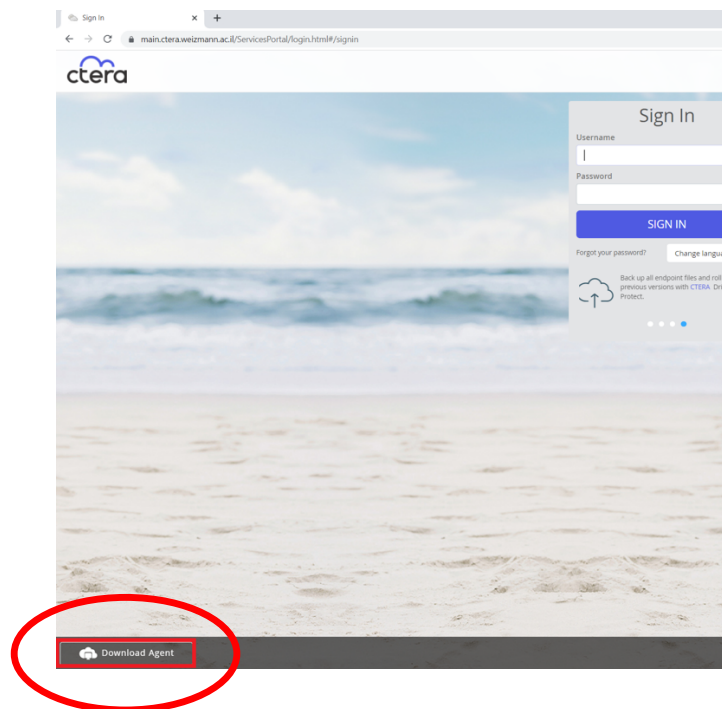
# Ctera Agent Update

## Windows

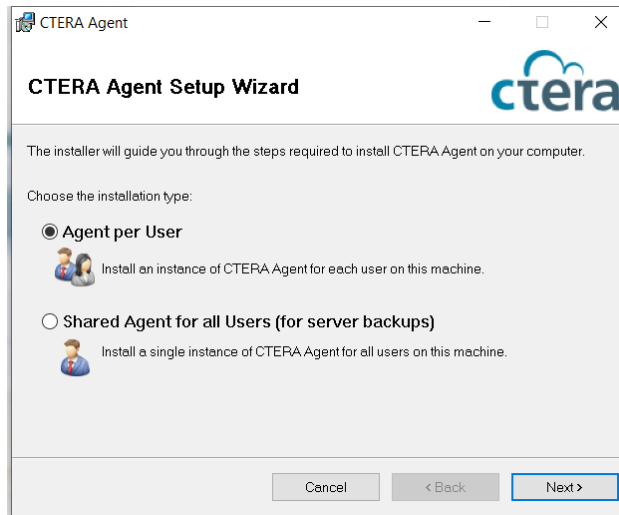
## Mac

### Ctera Windows Agent Update

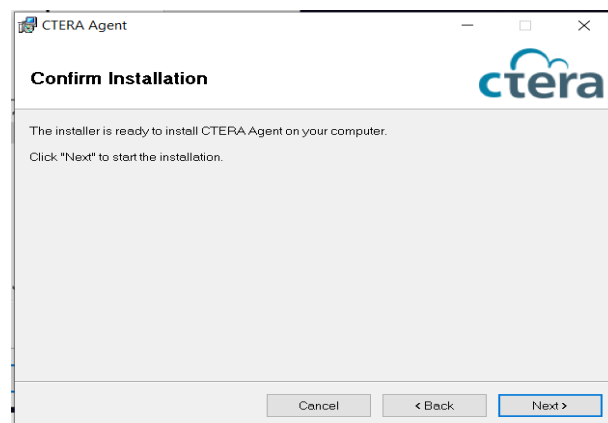
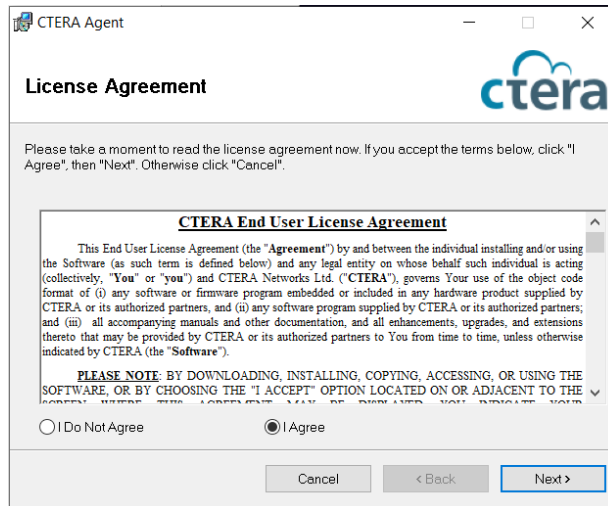
1. Enter to Ctera Portal: <https://main.ctera.weizmann.ac.il>
2. Click Download Agent:



3. Open **CTERA-BackupAgent-7.0.1332.9.msi** from your Downloads folder, choose "I Agree". Then click on Next:

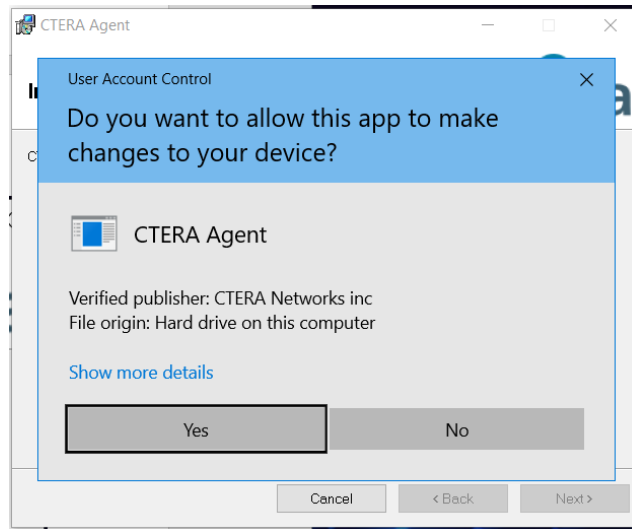


4. Click on Next on the following windows:

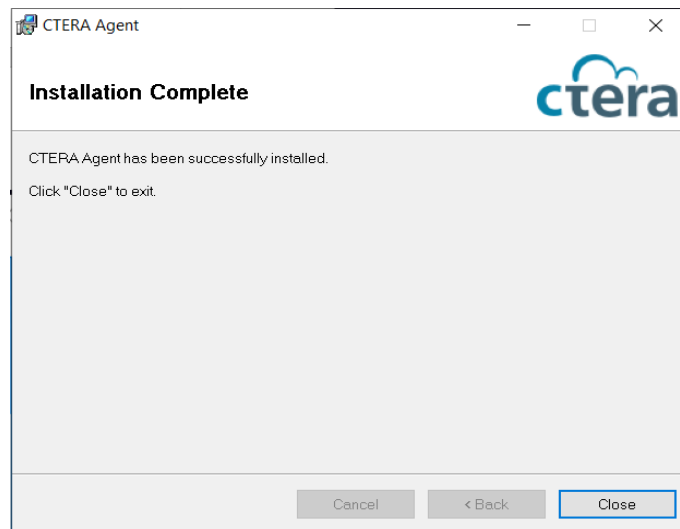




5. Click “Yes”:

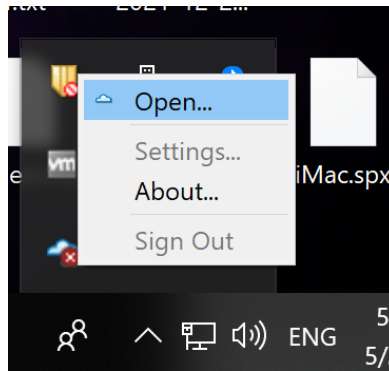


6. Then “Close”:



**The CTERA client is now installed, and you will need to log in to activate the backup:**

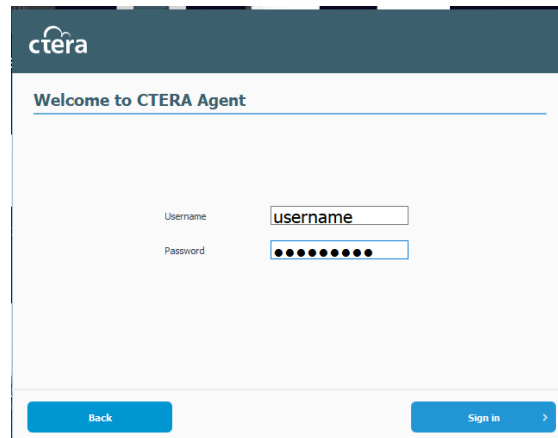
1. From the CTERA task bar icon select open:



2. If the address is shown in the window, just click “Continue”.
3. If the address bar is empty, type in the address according to you your faculty:
  - a. main.ctera.weizmann.ac.il
  - b. biology.ctera.weizmann.ac.il
  - c. biochemistry.ctera.weizmann.ac.il
  - d. chemistry.ctera.weizmann.ac.il
  - e. feinberg.ctera.weizmann.ac.il
  - f. scienceteaching.ctera.weizmann.ac.il
  - g. davisdon.ctera.weizmann.ac.il



4. enter your username and password and click “Sign-in”.

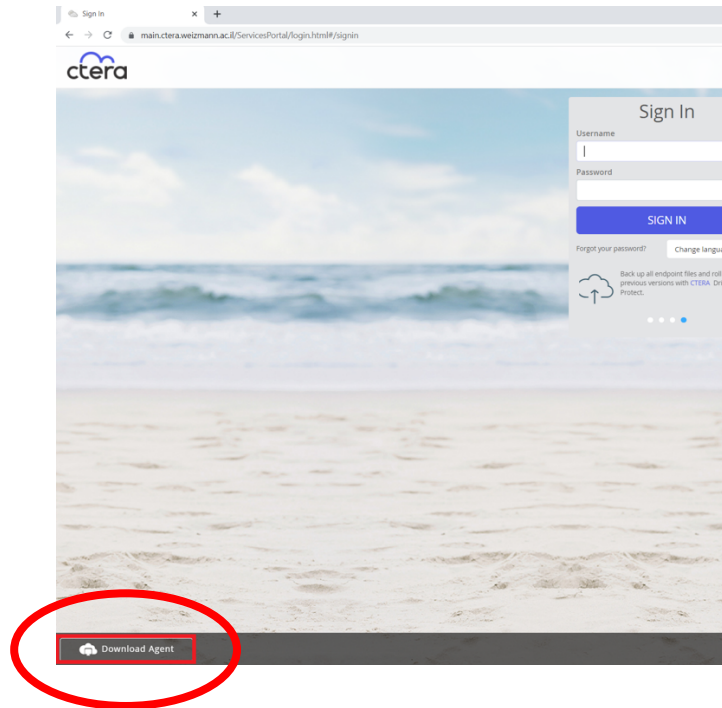


5. You can now close the window.

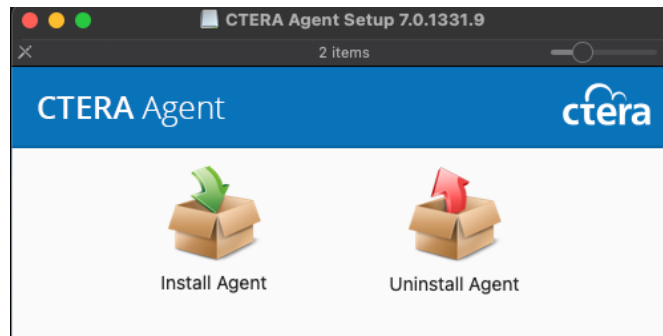


## Mac Agent Update

7. Enter to Ctera Portal: <https://main.ctera.weizmann.ac.il>
8. Click Download Agent:

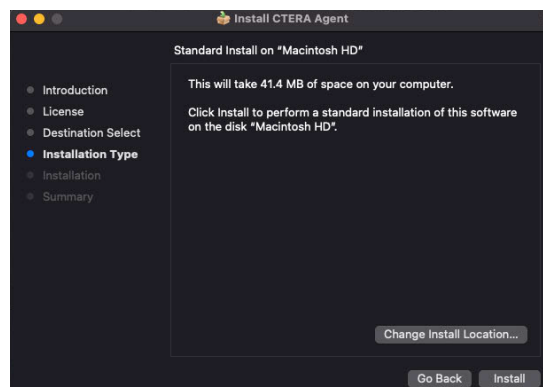
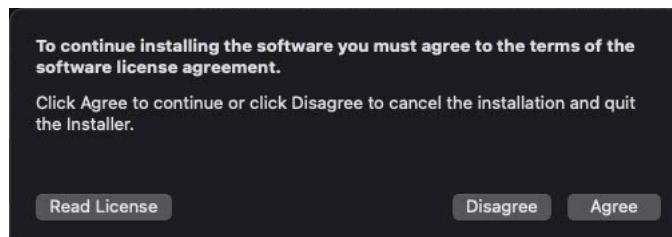
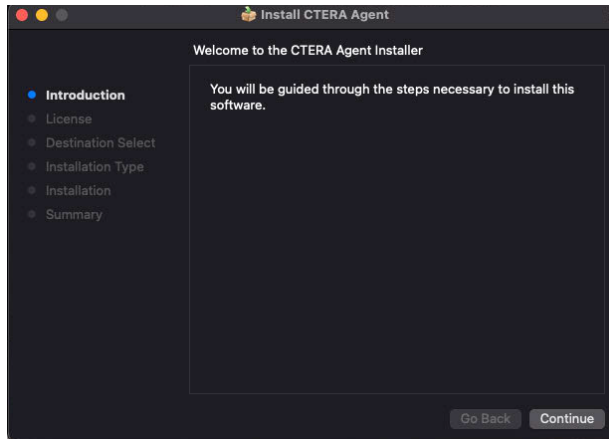


9. Open Agent-7.0.1331.9.0.dmg from your Downloads folder, open the DMG file, and run "Intall Agent":





10. Click Continue, and follow the on screen instructions:

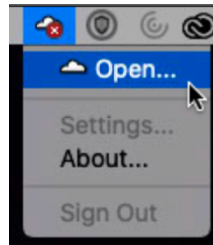




11. Enter computer password when requested, approve all requests from the installer and close the window when finished.

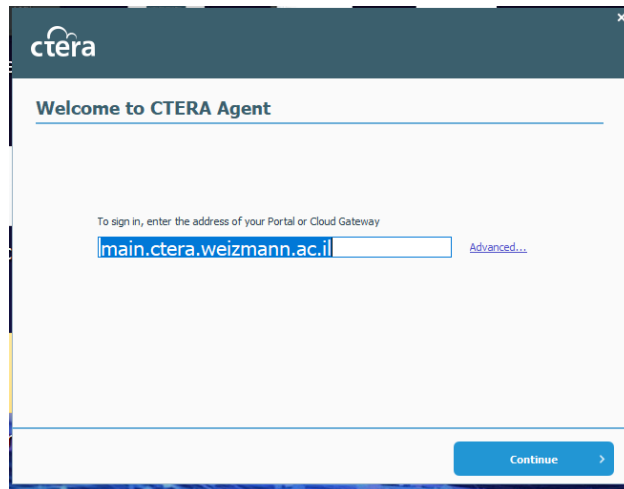
**The CTERA client is now installed, and you will need to log in to activate the backup:**

6. From the CTERA menu bar icon select open:

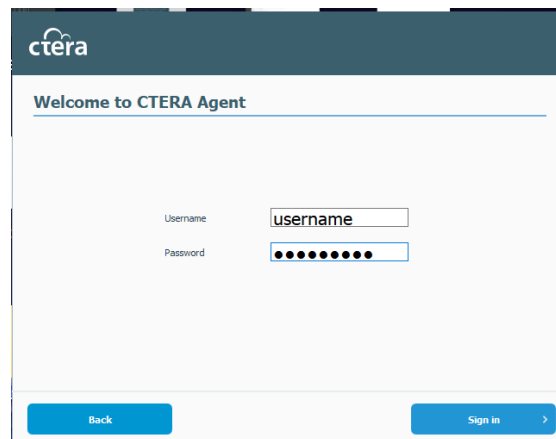


7. If the address is shown in the window, just click "Continue".
8. If the address bar is empty, type in the address according to you your faculty:
  - h. main.ctera.weizmann.ac.il
  - i. biology.ctera.weizmann.ac.il
  - j. biochemistry.ctera.weizmann.ac.il
  - k. chemistry.ctera.weizmann.ac.il
  - l. feinberg.ctera.weizmann.ac.il
  - m. scienceteaching.ctera.weizmann.ac.il
  - n. davisdon.ctera.weizmann.ac.il





9. enter your username and password and click "Sign-in".



10. You can now close the window.