



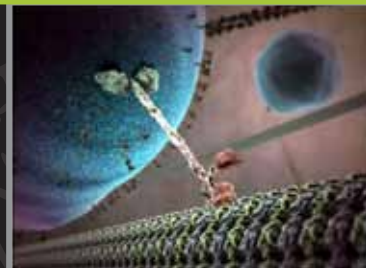
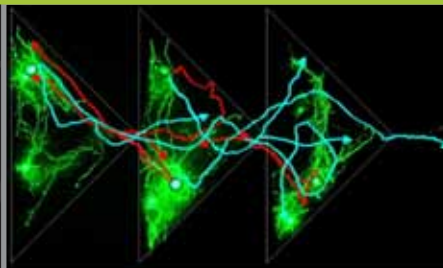
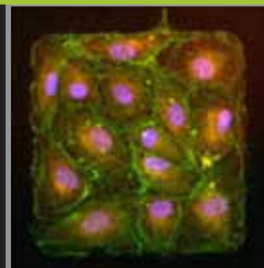
מכון ויצמן למדע
WEIZMANN INSTITUTE OF SCIENCE

CLORE CENTER FOR BIOLOGICAL PHYSICS

EINSTEIN MINERVA CENTER

KIMMEL CENTER FOR NANOSCALE SCIENCE

MINISYMPOSIUM ON BIOLOGICAL MACHINES: PHYSICS AND BIOENGINEERING



MONDAY, JANUARY 30, 2012

SCHMIDT AUDITORIUM, WEIZMANN INSTITUTE OF SCIENCE

09:45	<i>Welcome and introduction</i> Chair: Benny Geiger	
10:00	Roger Kamm MIT	US NSF Center on emergent behaviors of integrated cellular systems
10:15	Elisha Moses Weizmann	Engineered neuronal cultures for nonlinear logic computational devices
10:40	Taher Saif U. Illinois, Urbana	Mechanical tension in axons and synaptic vesicle clustering
11:15	Jacob Klein Weizmann	Hydration lubrication: a new paradigm for biolubrication and tissue engineering
11:40	Benny Geiger Weizmann	Response: a biologist's perspective
11:50	<i>Light lunch</i>	Schmidt auditorium lobby and square
	<i>Afternoon session: Chair - Sasha Bershadsky</i>	
12:45	Roger Kamm MIT	Microfluidics for ESC differentiation, angiogenesis and tumor metastasis
13:20	Benjamin Friedrich Dresden	Rigidity sensing and cellular forces
13:45	Ron Weiss MIT	Synthetic biology: from foundation to applications
14:20	Roy Bar Ziv Weizmann	A dual-promoter integrator for targeting cancer cells