

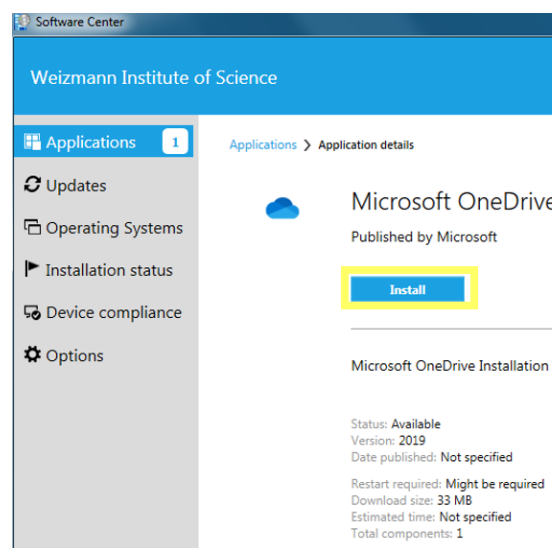
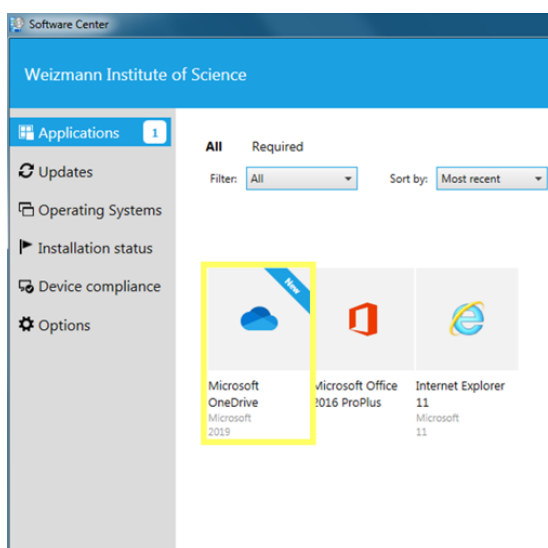
Microsoft OneDrive Installation and Startup Guide

To install and start up OneDrive:

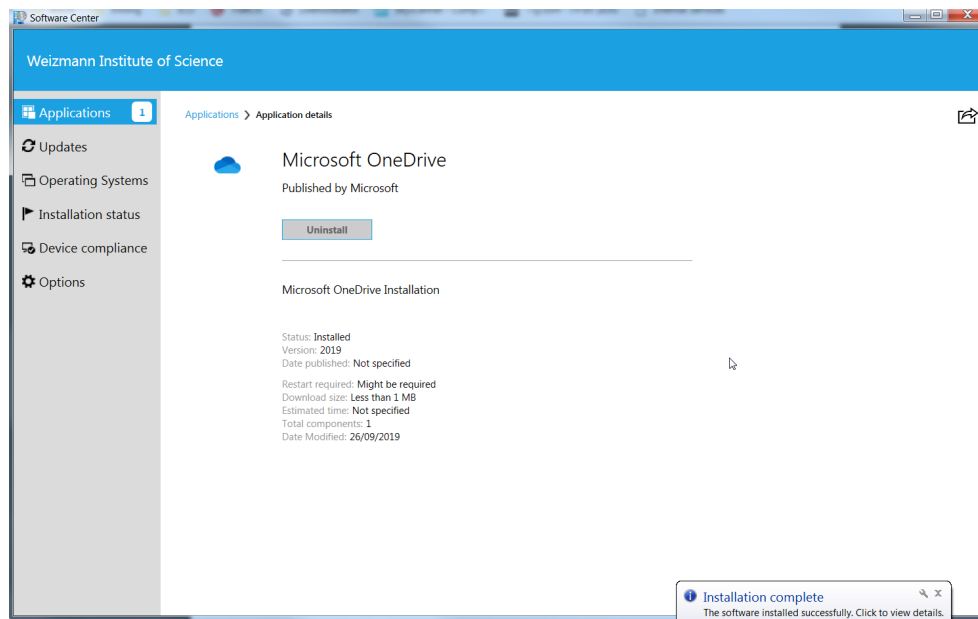
1. Open the Windows **Start** menu and start typing **Software Center**. Click the **Software Center** search result as soon as it appears.



2. Select the **Microsoft OneDrive** icon in the window that appears, and click the **Install** button (should this software installation package not be visible, contact the Service Desk at extension 4444).



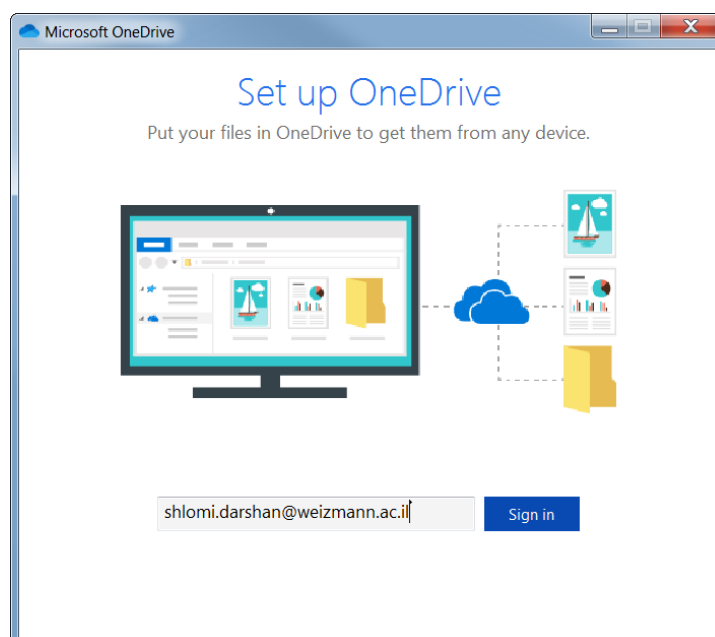
- Installation will last a few seconds and, once completed, the button will change from **Install** to **Uninstall**. Additionally, an **Installation Complete** notification will appear at the bottom of the window.



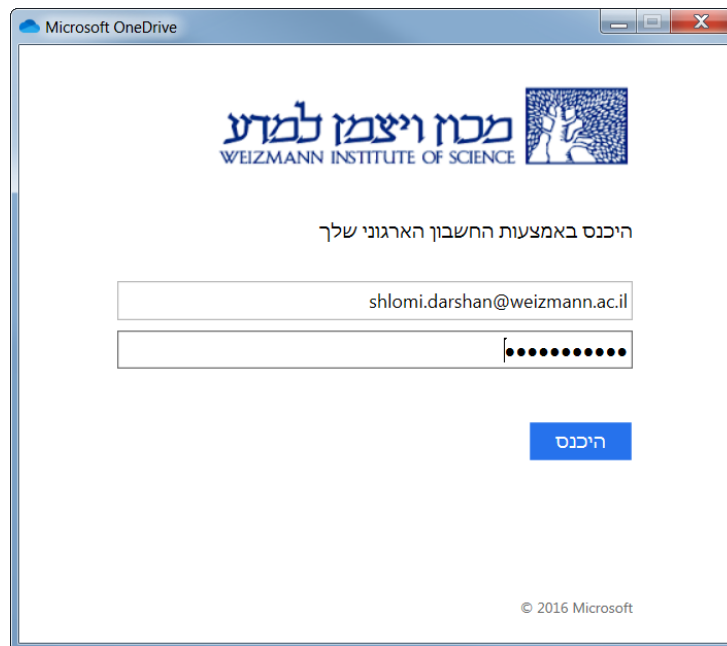
- A **OneDrive** shortcut will now appear on the Windows desktop. Launch the OneDrive application by double-clicking it.



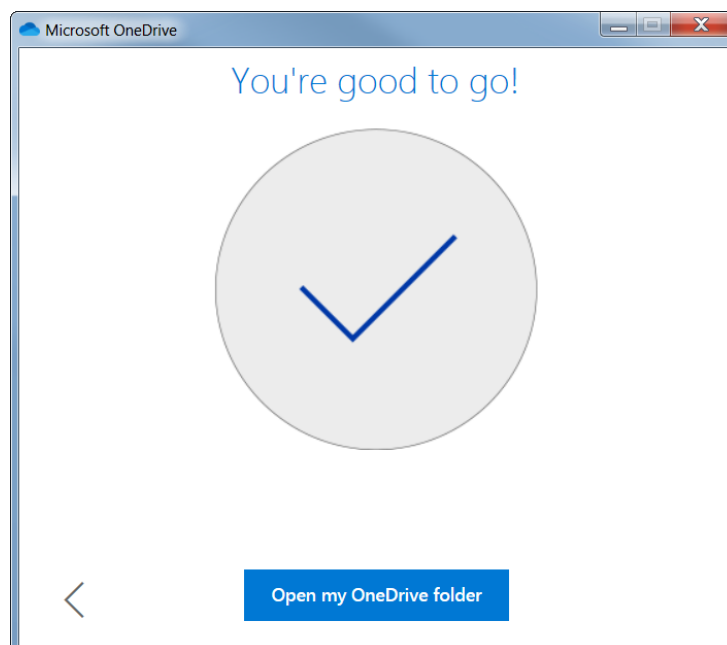
- A few seconds later, the following window will appear. Enter your Weizmann Institute e-mail address in the relevant field and click **Sign In**.



6. Enter the password associated with your Weizmann Institute e-mail address in the following window, then click the appropriate button (**היכנס**) to log in.



7. Click **Next** in subsequent windows. The following window will indicate that you're ready to get started using Microsoft OneDrive.



Should you encounter any problem or question during any installation or startup stage, please feel free to contact the Service Desk at extension 4444.