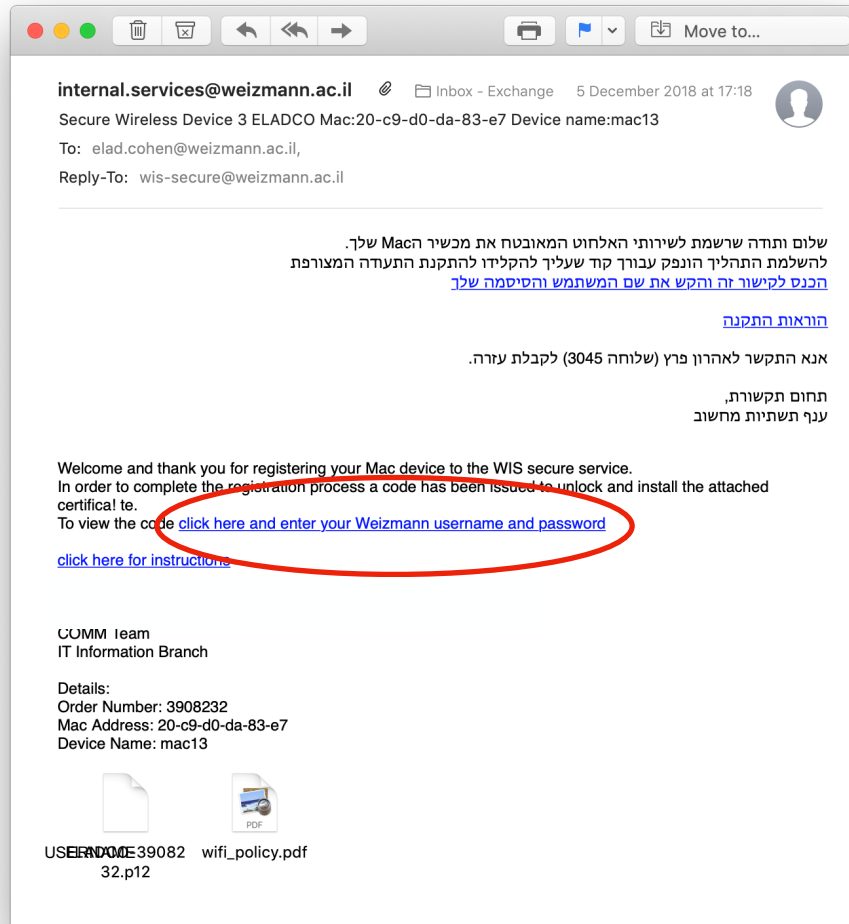
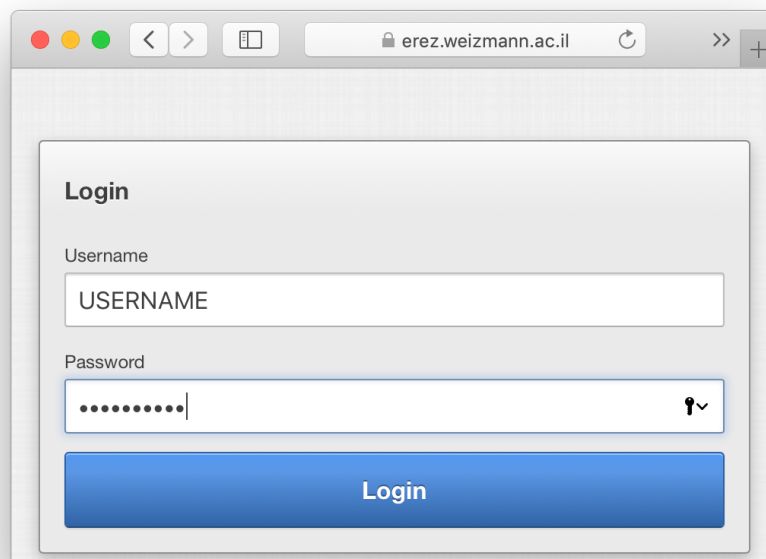


WIS Secure Install on Mac

1. Open the email message you received from Internal Services, and click the link:



2. Enter your user/password credentials in the browser window:



erez.weizmann.ac.il

Login

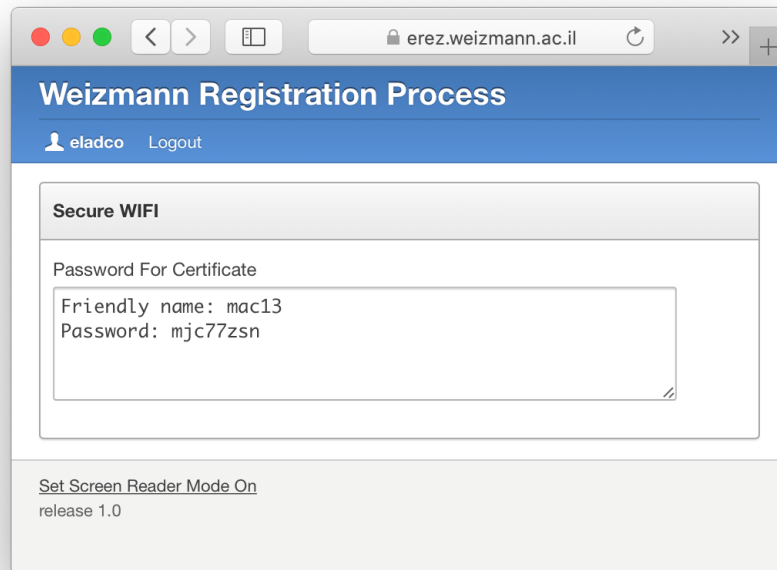
Username

Password

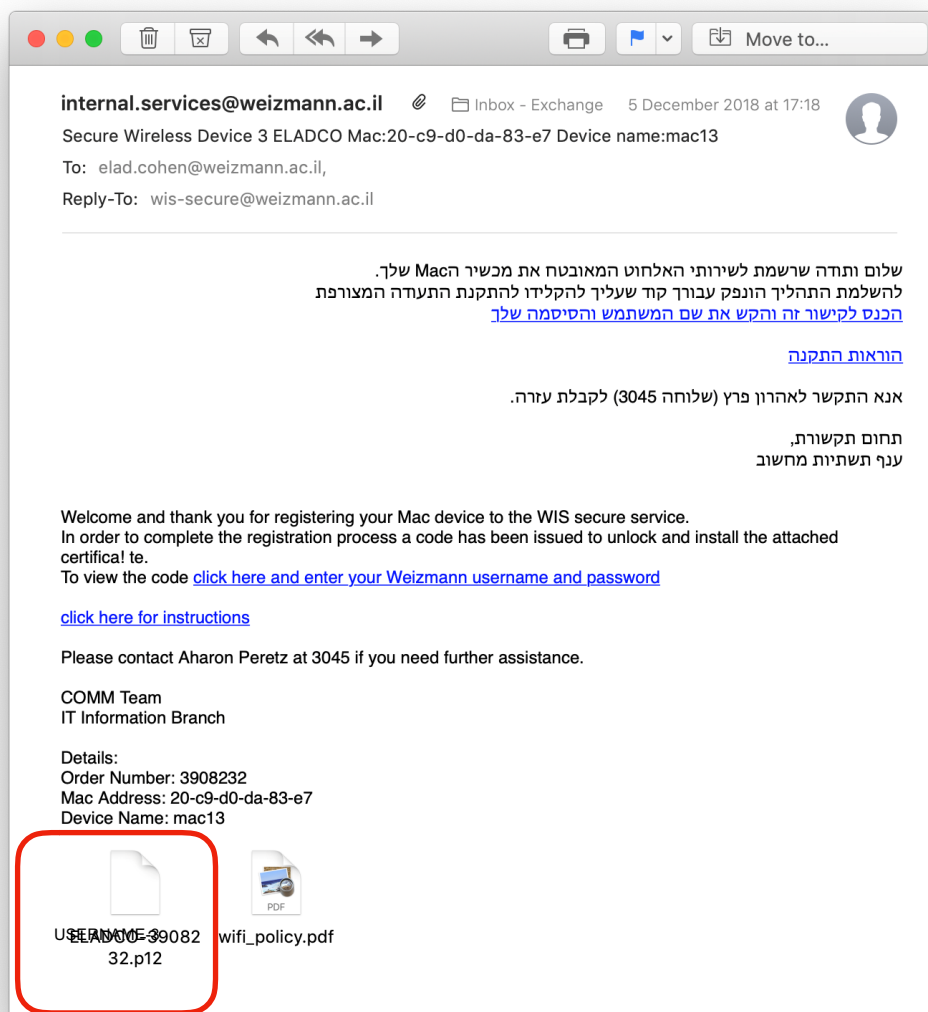
[Login](#)



3. Copy the provided password:

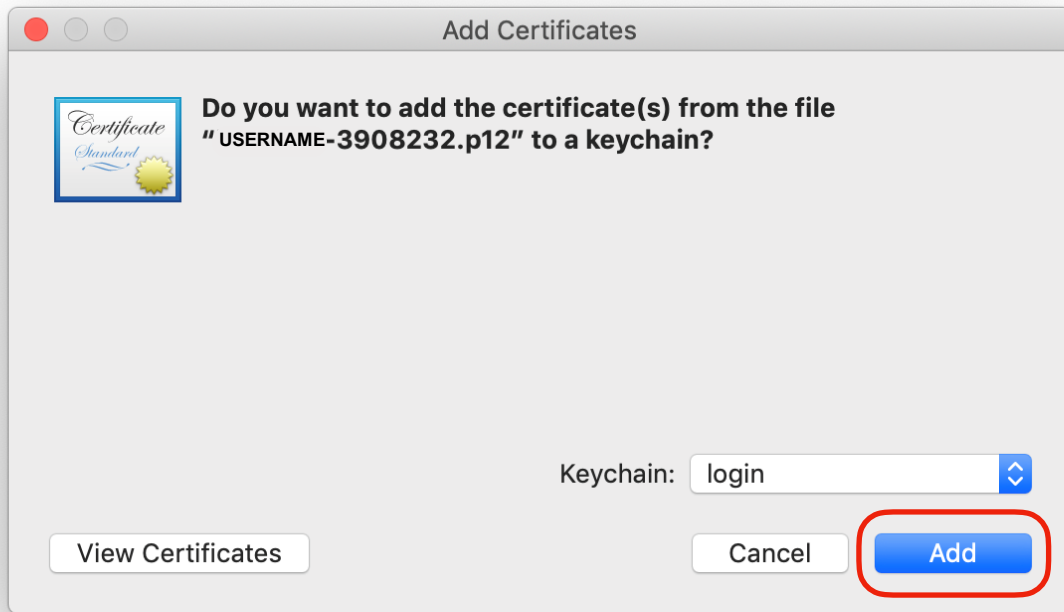


4. Go back to the email, and open the attached file:

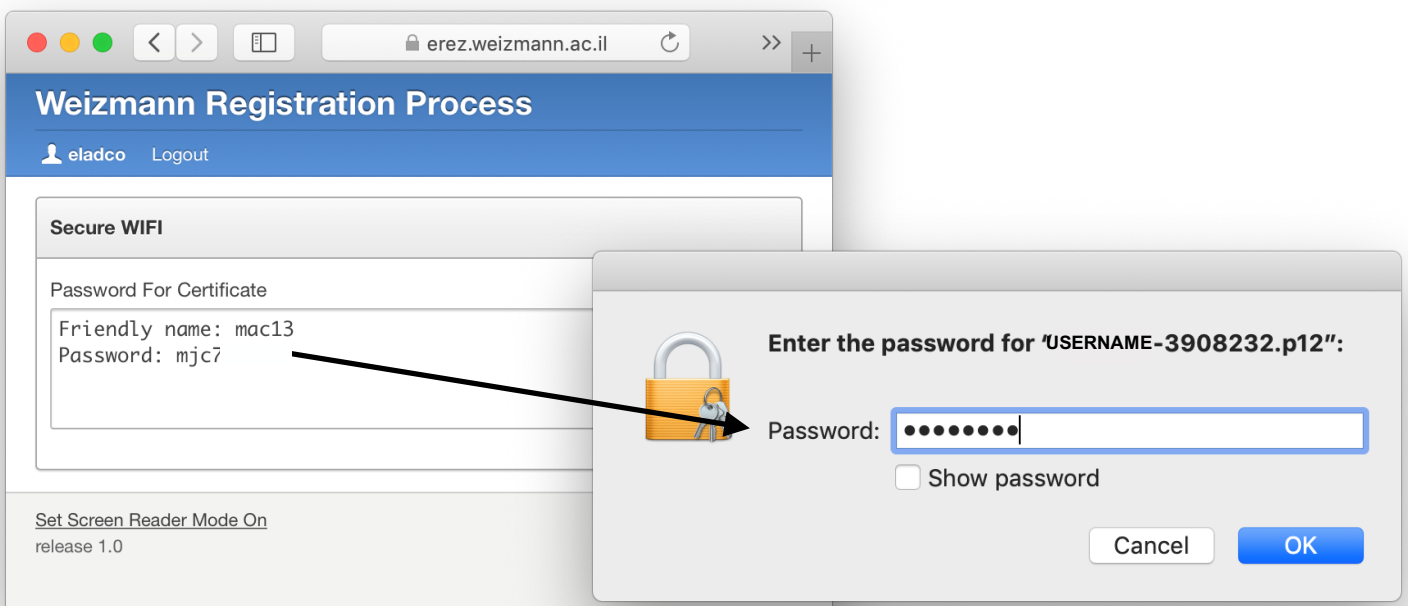




5. Add the certificate to the keychain:

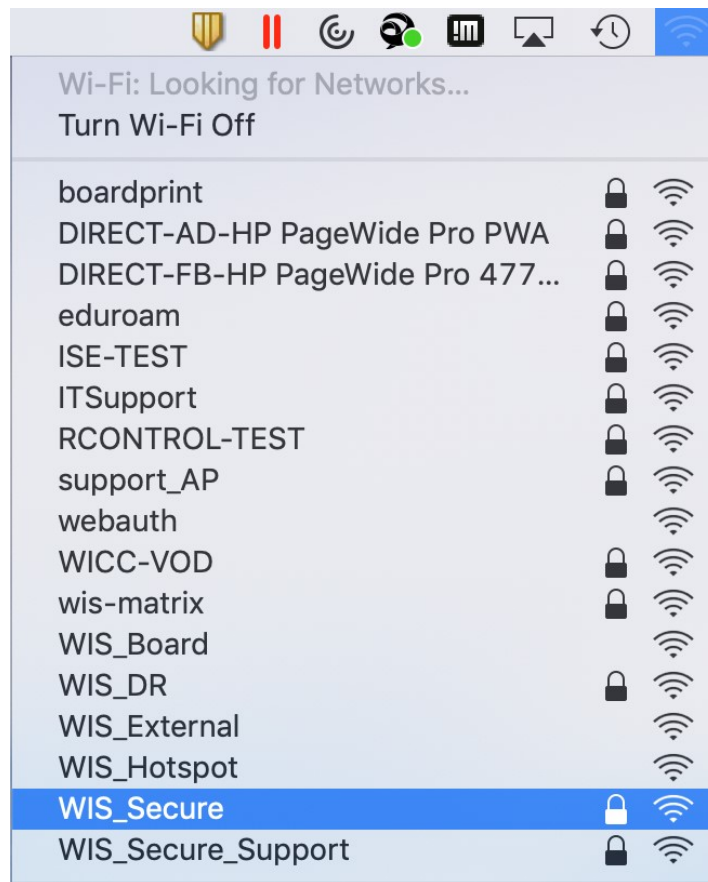


6. Enter the password from step 3:

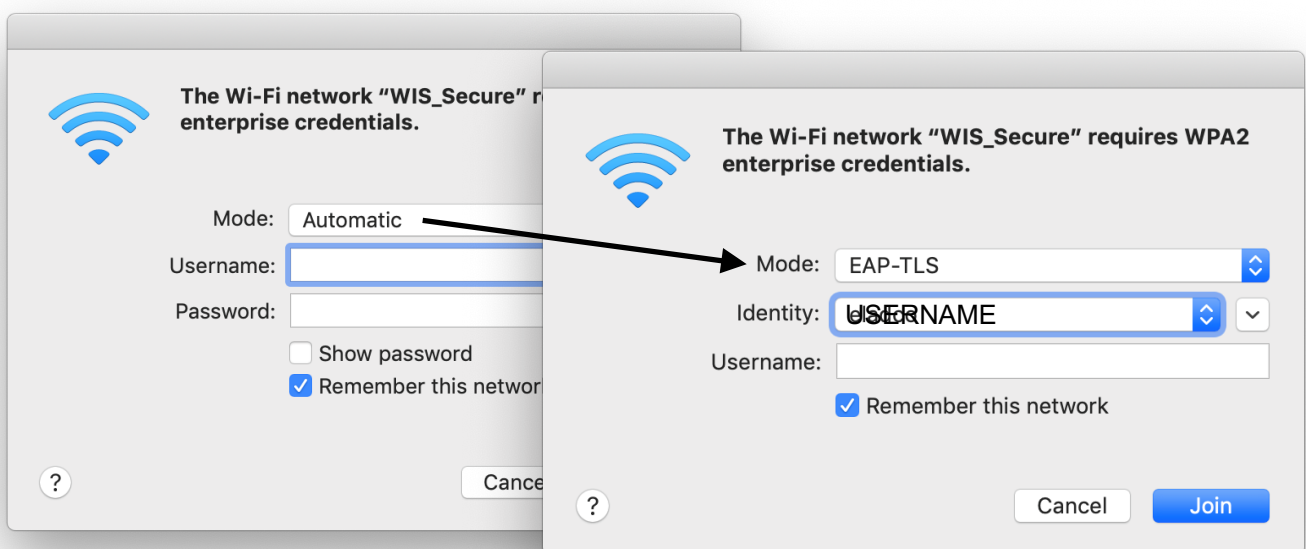


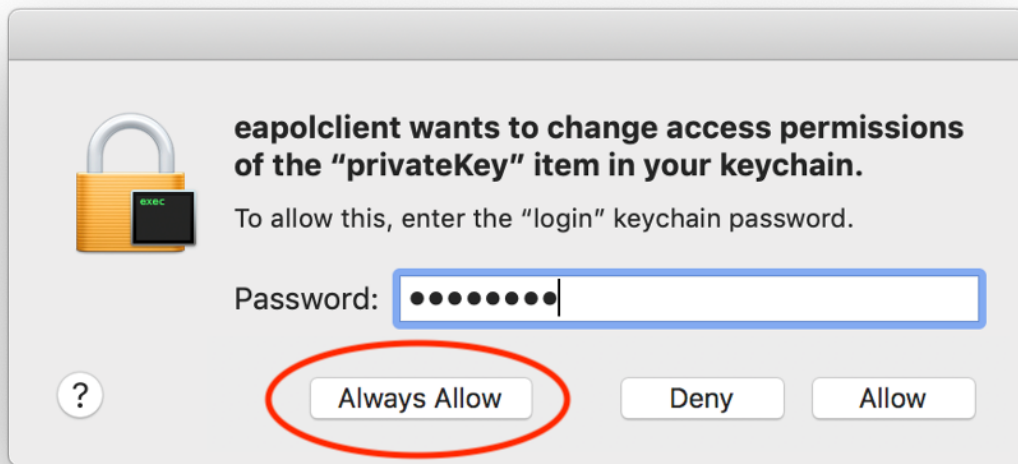


7. You can now connect to “**WIS_Secure**” from the Wifi menu:

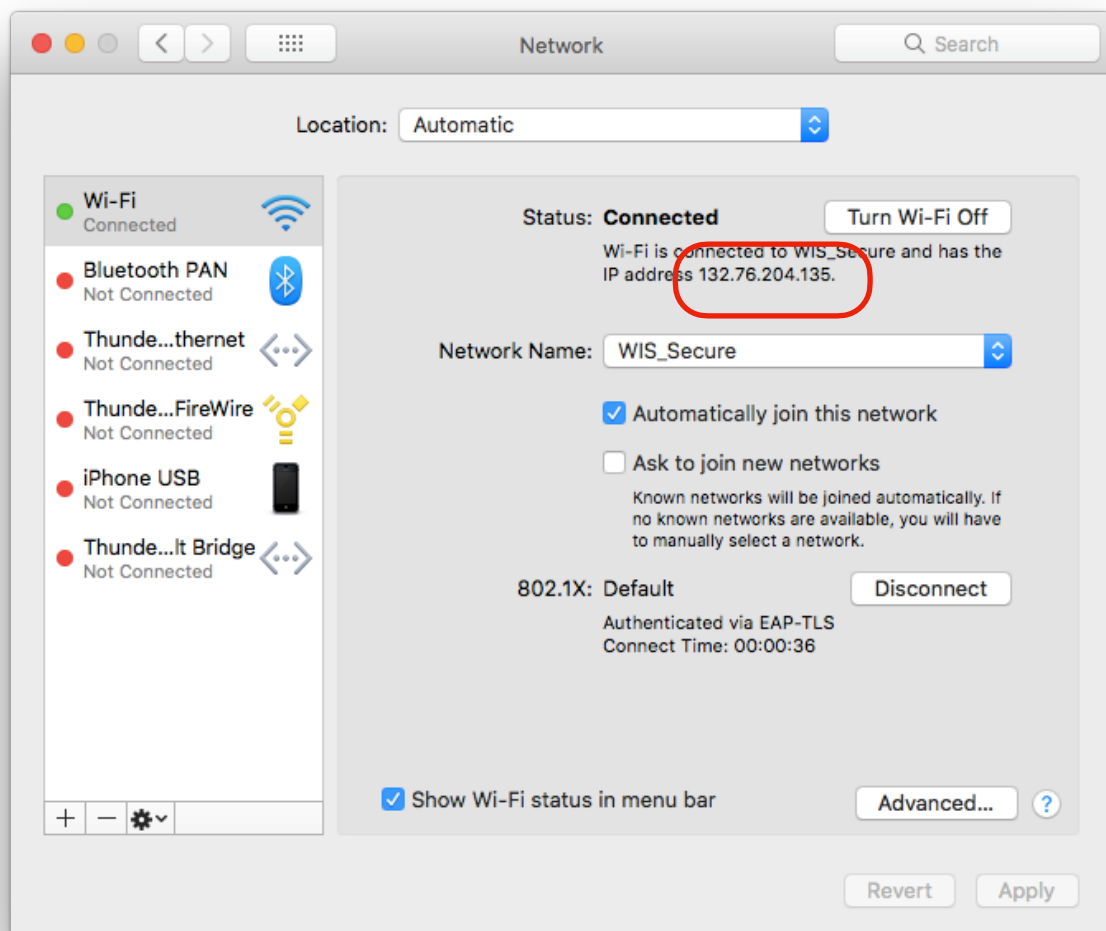


8. Change “**Automatic**” to “**EAP-TLS**” in the drop-down menu, and select your username in the identity menu, then click **Join**:





9. Enter the password for your Mac and Select **"Always Allow"**.
10. Enter the password **again** and Select **"Allow"**.
11. That's it, you are now connected to **WIS_Secure**!
12. You can check that the ip is correct in System Preferences->Network:





13. You can prioritize WIS_Secure by clicking **Advanced**, and **dragging** it to the top in the Preferred Networks window. Click **OK**, and then **Apply**.

