



## WIS\_Secure installation on Windows 8/10

To install WIS\_Secure on Windows 8/10 perform the following steps:

1. After registration through Internal Services is completed you should receive an email message from IT with the subject "Secure Wireless Device X UserID MAC:XX-XX-XXXX-XX-XX".  
Open the email message and follow the hyperlink inside.

\*\*\*\*\*

Welcome and thank you for registering your Windows device to the WIS secure .  
In order to complete the registration process a code has been issued to unlock and  
certificate.

To view the code [click here and enter your Weizmann username and password](#)

שלום ותודה שרשמת לשירותי האלחוט המאובטח את מכשיר ה Windows שלך.  
להשלמת התהליך הונפק עבורך קוד שעליך להקלידו להתקנת התעודה המצורפת  
[הכנס לקישור זה והקש את שם המשתמש והסיסמה שלך](#)

\*\*\*\*\*

2. Enter your username and password, then click **Login**.

Login

Username  
dsafro

Password  
\*\*\*\*\*

Login

3. You will see the certificate password and the friendly name of your Windows computer as was set by the secretariat during registration.

Weizmann Registration Process

dsafro Logout

Secure WIFI

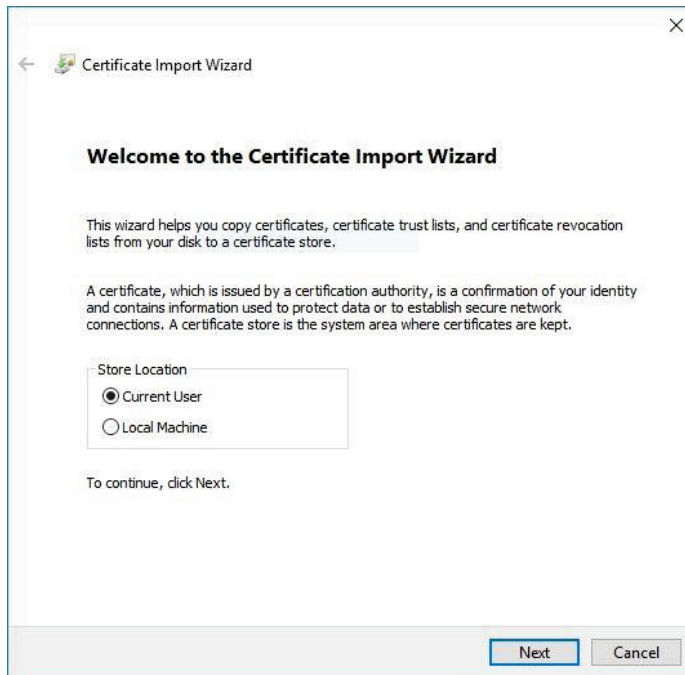
Password For Certificate

Friendly name: SAFROTEL

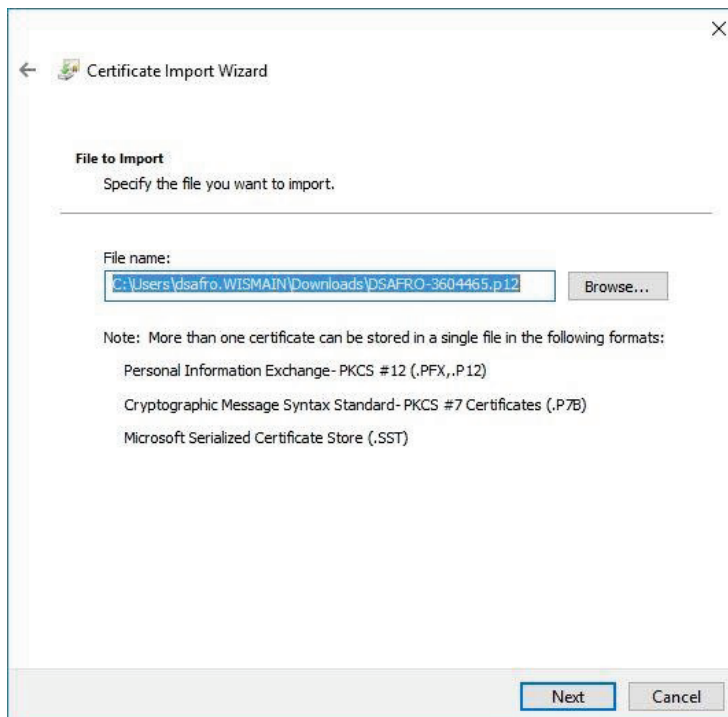
Password:



- Return to the registration confirmation email message and open the certificate (.p12) file attachment.
- In the wizard, make sure **Current User** is selected, then click **Next**.



- Click **Next**.





7. Enter the certificate password from step (3), then click **Next**.

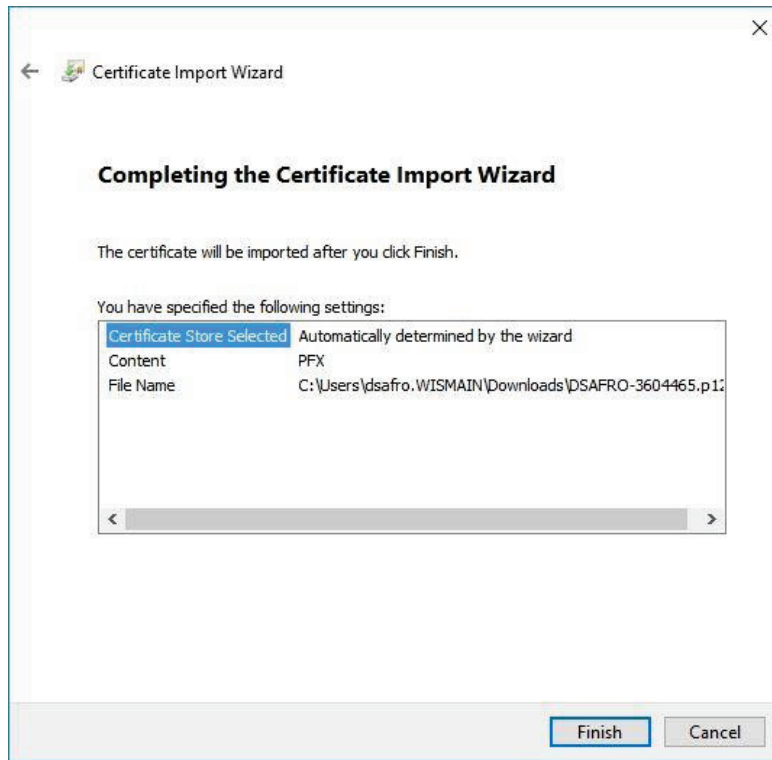
The screenshot shows the 'Certificate Import Wizard' window. The title bar reads 'Certificate Import Wizard'. Below the title bar, there is a back arrow and a small icon. The main content area is titled 'Private key protection' and contains the following text: 'To maintain security, the private key was protected with a password.' Below this is a horizontal line. The text 'Type the password for the private key.' is followed by a 'Password:' label and a text input field containing ten dots. Below the input field is a checkbox labeled 'Display Password'. Underneath is the 'Import options:' section, which contains three checkboxes: 'Enable strong private key protection. You will be prompted every time the private key is used by an application if you enable this option.' (unchecked), 'Mark this key as exportable. This will allow you to back up or transport your keys at a later time.' (unchecked), and 'Include all extended properties.' (checked). At the bottom right of the window are two buttons: 'Next' and 'Cancel'.

8. Click **Next**.

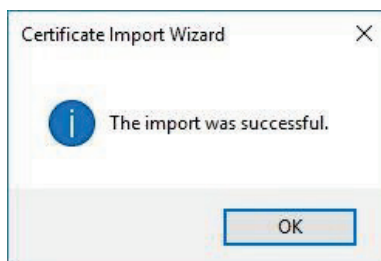
The screenshot shows the 'Certificate Import Wizard' window. The title bar reads 'Certificate Import Wizard'. Below the title bar, there is a back arrow and a small icon. The main content area is titled 'Certificate Store' and contains the following text: 'Certificate stores are system areas where certificates are kept.' Below this is a horizontal line. The text 'Windows can automatically select a certificate store, or you can specify a location for the certificate.' is followed by two radio button options: 'Automatically select the certificate store based on the type of certificate' (selected) and 'Place all certificates in the following store'. Below the second option is a 'Certificate store:' label and a text input field. To the right of the input field is a 'Browse...' button. At the bottom right of the window are two buttons: 'Next' and 'Cancel'.



9. Click **Finish**.



10. Click **OK**.

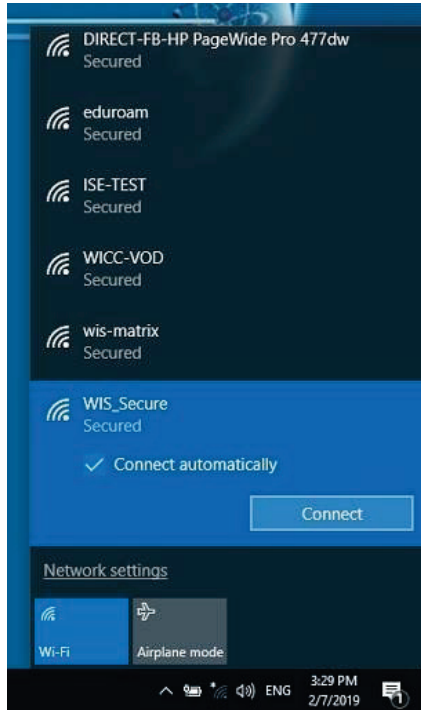


11. Click on the network icon on the taskbar to see available connections.

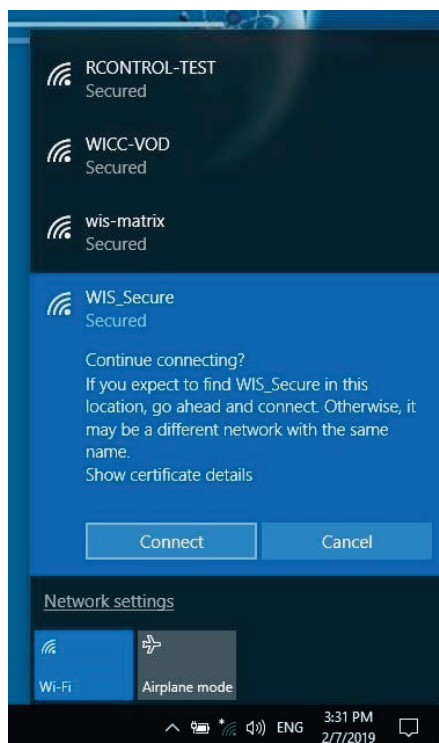
12. Click **WIS\_Secure**.



13. Click **Connect**.

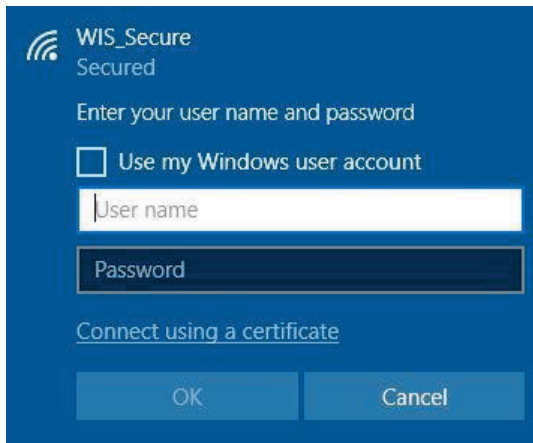


14. When a **Continue connecting...** message appears, click **Connect**.





15. Click on **Connect Using a Certificate**.



16. You should see **Connected, secured** status when the connection is established.

