

Table of Contents

- 1. System requirements** **1**
- 2. Install Microsoft Visual C++ 2010 Redistributable Package** **1**
- 3. Install framework 3.5 from** **1**
- 4. Install Xvid encoder** **2**
- 5. Install ffdshow** **4**
- 6. Install labview runtime 2010** **6**
- 7. Install mousetrace.exe** **6**

1. System requiems

Operating system: Windows 7 64-bit; Windows 7 32-bit; Windows Vista 64-bit; Windows Vista 32-bit; Windows XP 32-bit;

2. Install Microsoft Visual C++ 2010 Redistributable Package

Download and install Visual C++ 2010 Redistributable Package from the links in Table 1

Table 1: Visual C++ 2010 Redistributable Package



OS	Link	File name
X86	http://www.microsoft.com/en-us/download/details.aspx?id=5555	vcredist_x86.exe

3. Install framework 3.5 from

Download and **Microsoft .NET Framework 3.5** from the link-

<http://www.microsoft.com/en-us/download/details.aspx?id=21>

3.1. For windows 7 only enable framework 3.5

Click the **Start** button , click **Control Panel**, click **Programs**, and then click **Turn Windows features on or off.**  If you are prompted for an administrator password or confirmation, type the password or provide confirmation.

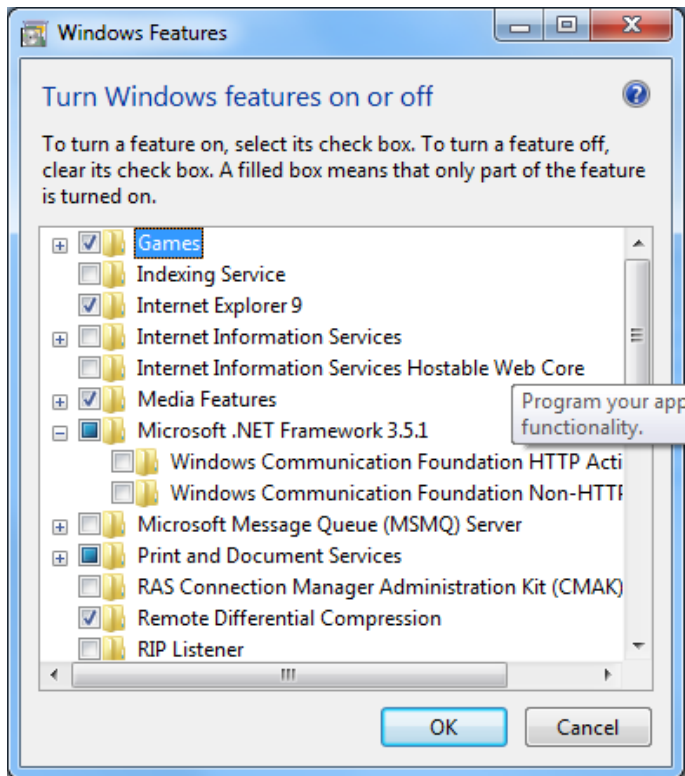


Figure 1: Windows features on/off

4. Install Xvid encoder

OS	Link	Name
X86	http://www.digital-digest.com/software/download.php?sid=1052&ssid=0&did=14	Xvid-1.3.2-20110601.exe

4.1. Configure Encoder

Open Configure Encoder from start button as shown in Figure 2

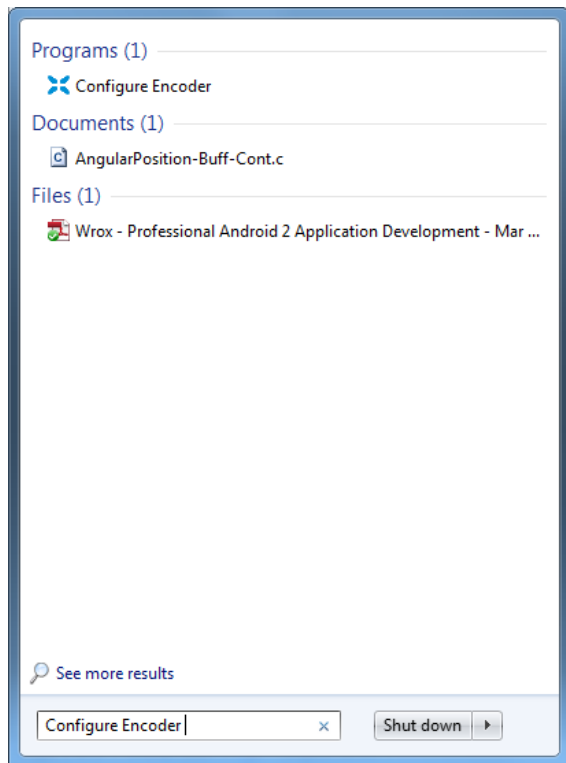


Figure 2: Open Configure Encoder Windows 7.

Set Configure Encoder as shown in Figure 3 to Defaults

Single Pass: encodes the movie at a constant bit-rate.

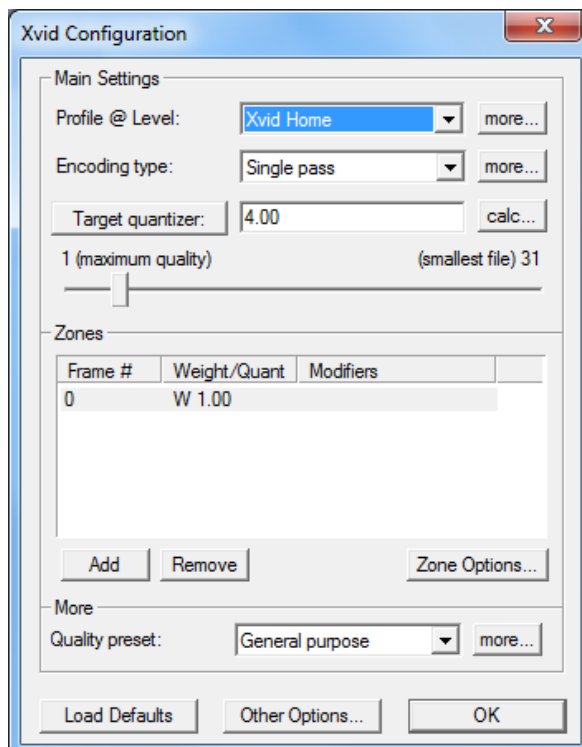
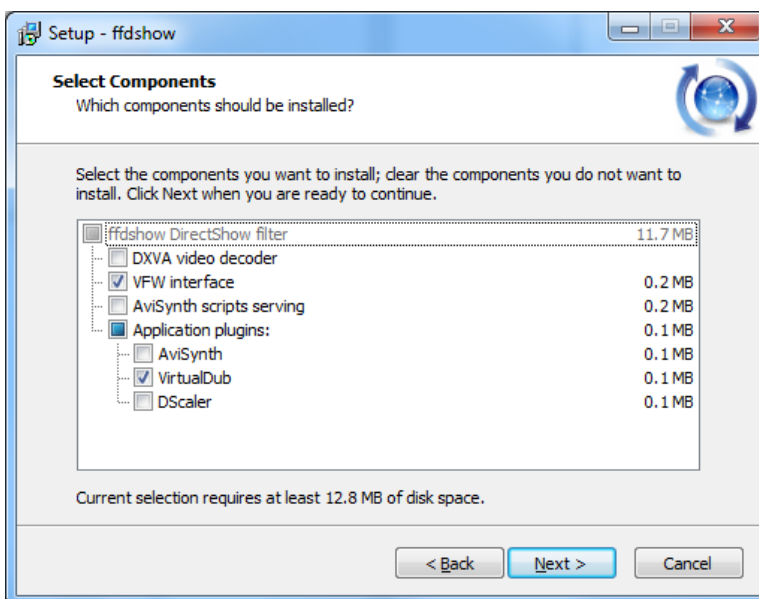
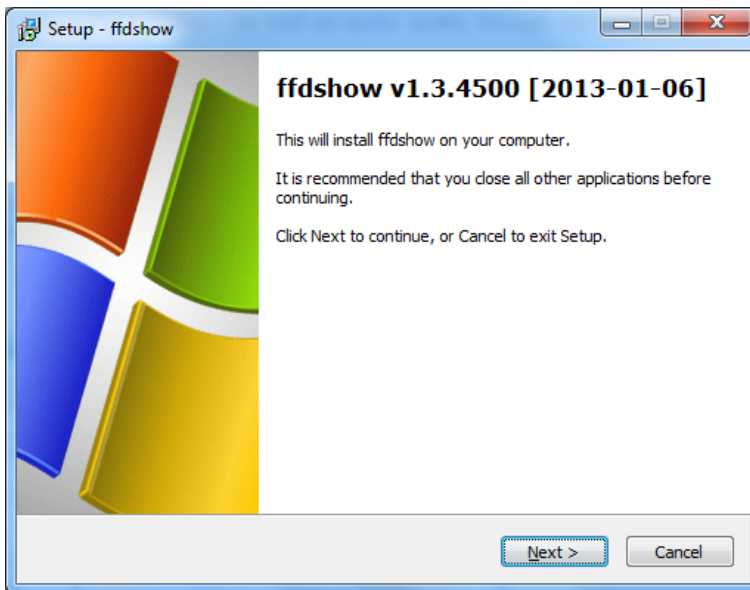
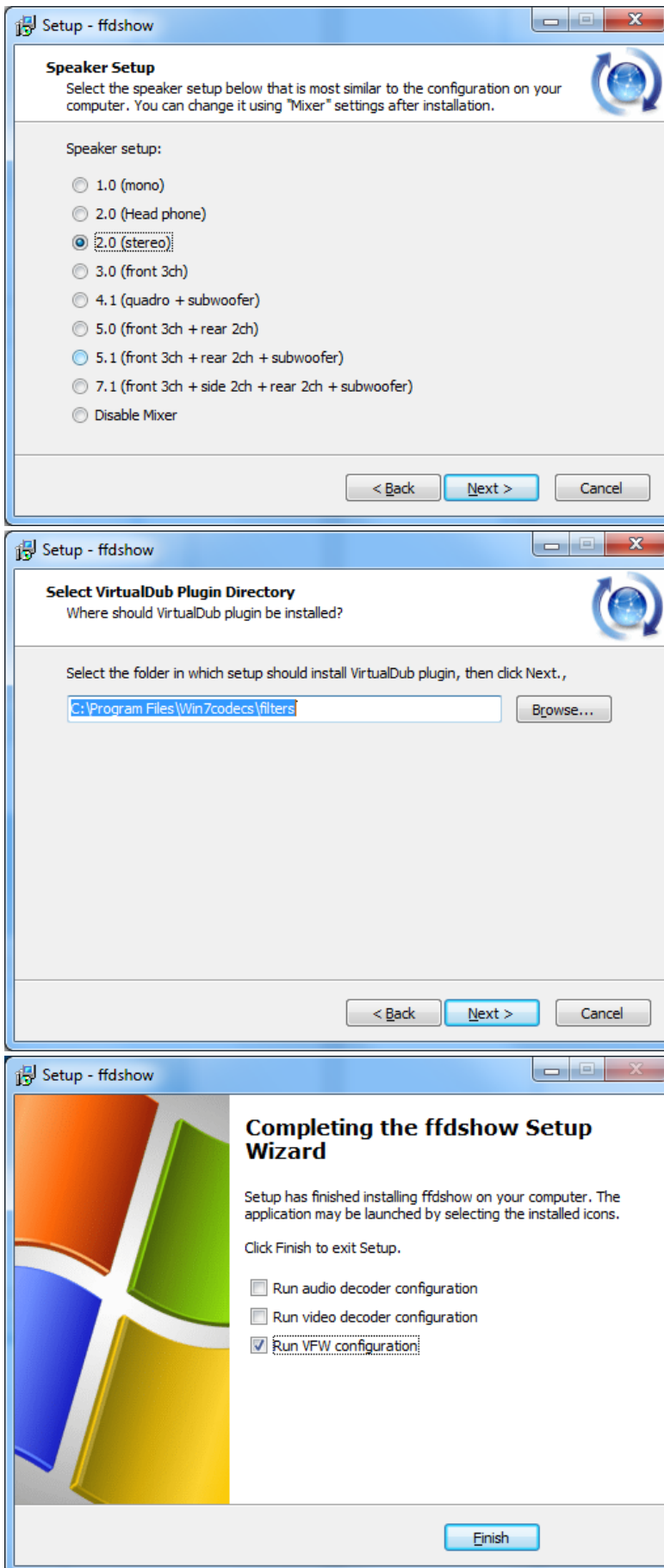


Figure 3: Configure Encoder setup.

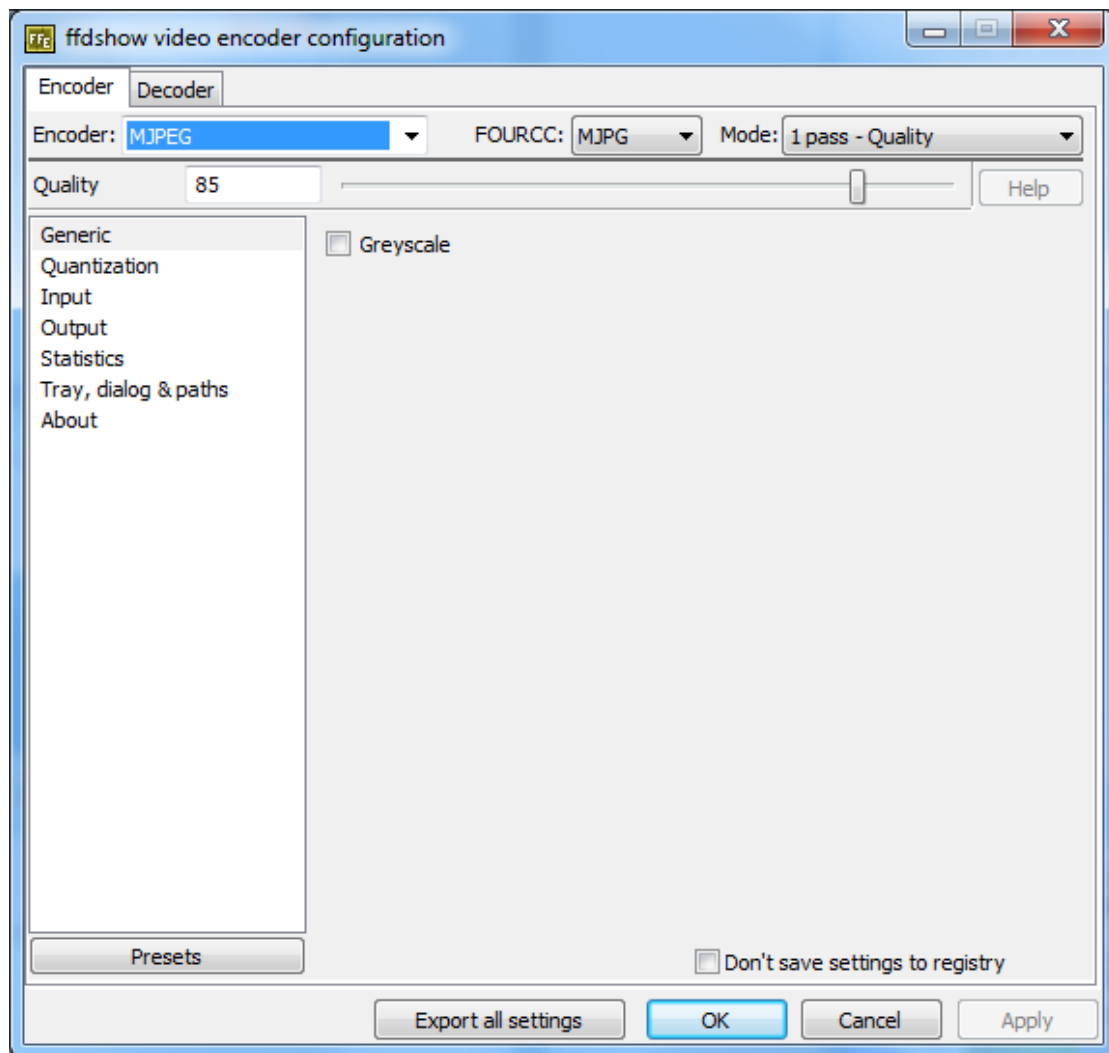
5. Install ffdshow

Download and install ffdshow installer from <http://www.free-codecs.com/download/ffdshow.htm>





Run VFW configuration



Set Encoder to MJPEG 1 pass

6. Install labview runtime 2010

Mouse trace installer include Labview runtime 2010 for x86 in the package.

7. Install [mousetrace.exe](#)

7.1. Run setup.exe from directory: Mouse trace installer

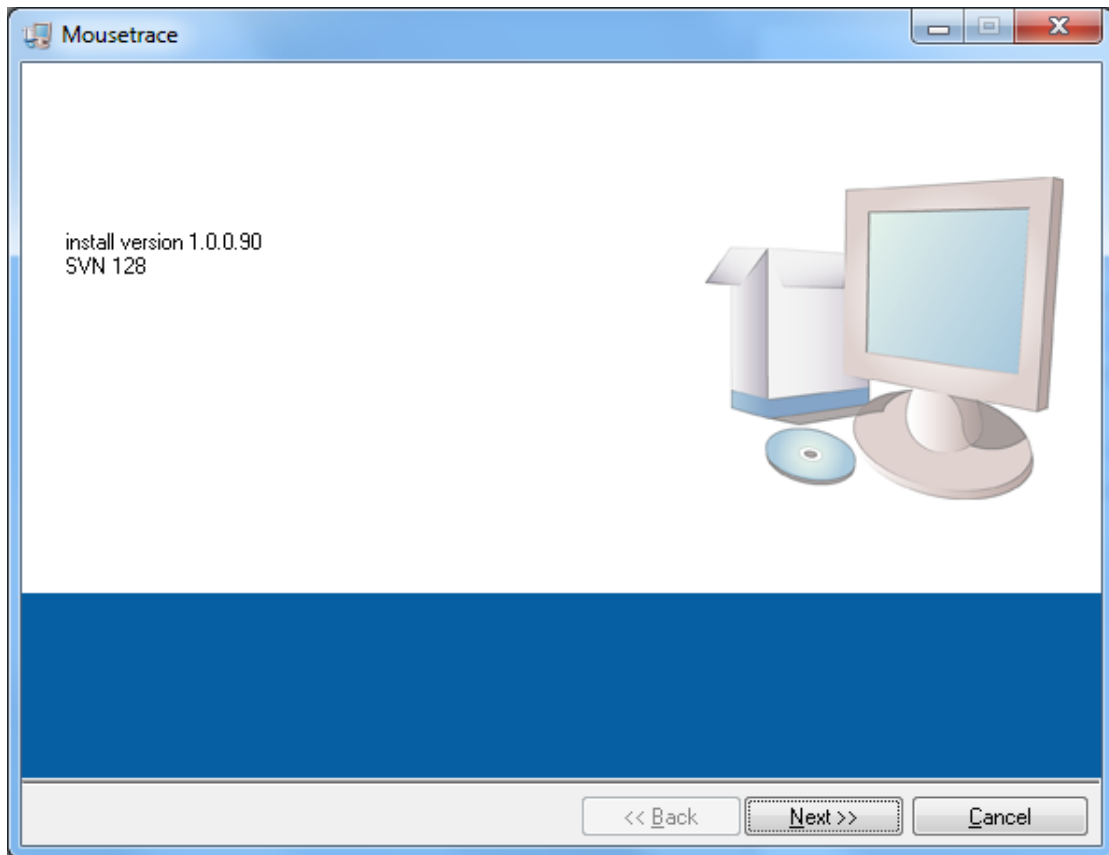


Figure 4: Initial install window

7.2. Select install directory for Mousetrace and National instrument products

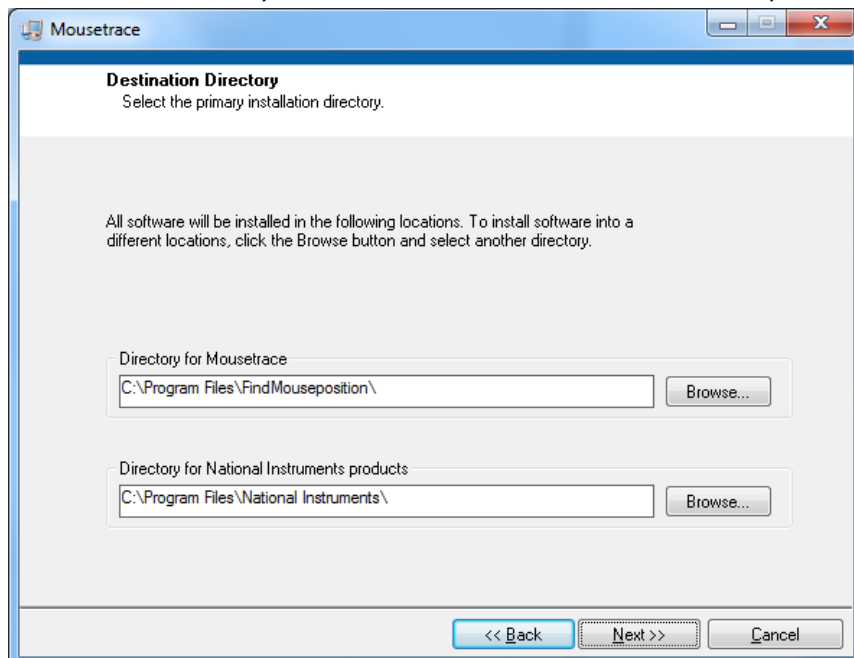


Figure 5: Destination Directory.

7.3. If image do not load then, copy the dll's from directory FindMouseposition\data To system32 directory