

RFID Data Acquisition Software - User's Manual

1.1 Under "File" the options are :

1.1.1 "Analyze an existing file" - This option is for the analysis of experiment's collected data.

1.1.2 "Online data directory" - Allows the user to choose/open a data directory.

1.1.3 "Online data file maximum size" - Allows the user to set the maximum size of each data file.

1.1.4 "Online data acquisition – start" – Starts the data acquisition for an experiment.

1.1.5 "Online data acquisition – stop" – Stops data acquisition of experiment.

1.2 Under "Setup" the options are :

1.2.1 "Antennas array" – Currently there are 2 options of antennas arrays, 9 or 47 antennas.

1.2.2 "agressive speed (cm/sec)" - Allows the user to define the threshold above which the mice speed is considered an aggressive behaviour.

1.2.3 "Mice definitions" – Define individual mouse properties.

1.2.4 "RFID readout rate (ms)" - Allows the user to define different reading rates in msec.

1.2.5 "RFID read delay" - Allows the user to choose the number of delays between each consecutive reading of the decoder data.

1.3 Under "Diagnostic" the options are :

1.3.1 "Buzzers on/off" - Allows the user to set the decoders buzzers on or off, the default is off.

1.3.2 "LEDs on/off" - Allows the user to set each decoder LEDs on or off, the default is on.

1.3.3 "Show RFID cards number" – displays for each RFID card its individual number.

1.4 On the GUI window there are some additional options:

1.4.1 "Online report" – Allow to open a report window so that the collected data is visible online.

1.4.2 "Write ms to file" – Allows the addition of msec data to the time stamp, default is with msec.

1.4.3 "Write data to file" – Enables or disables the collected data to be written to a file.

1.4.4 "Check in/Check out" – This option allows for a Check-in/Check-out mode of data collection rather than continuous data collection.

1.4.5 "Silence mode" – This option prevents interruption of the data reading by the decoder during a read cycle.

The "Mice moves" show the accumulated number of detections.

The "Ports polled" show the total number of polings that the system performed.

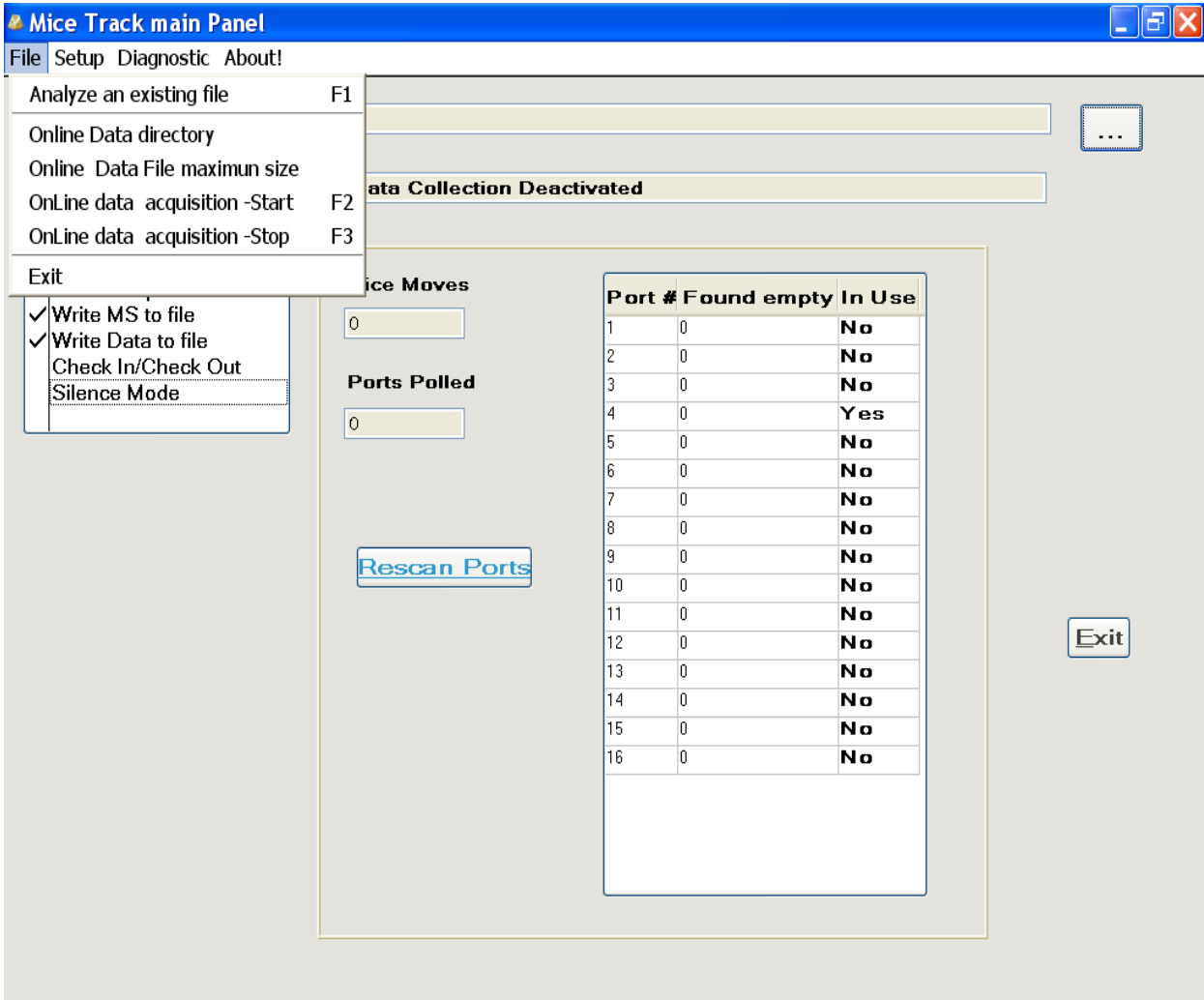


Fig. 1: RFID data acquisition software – "File" Options

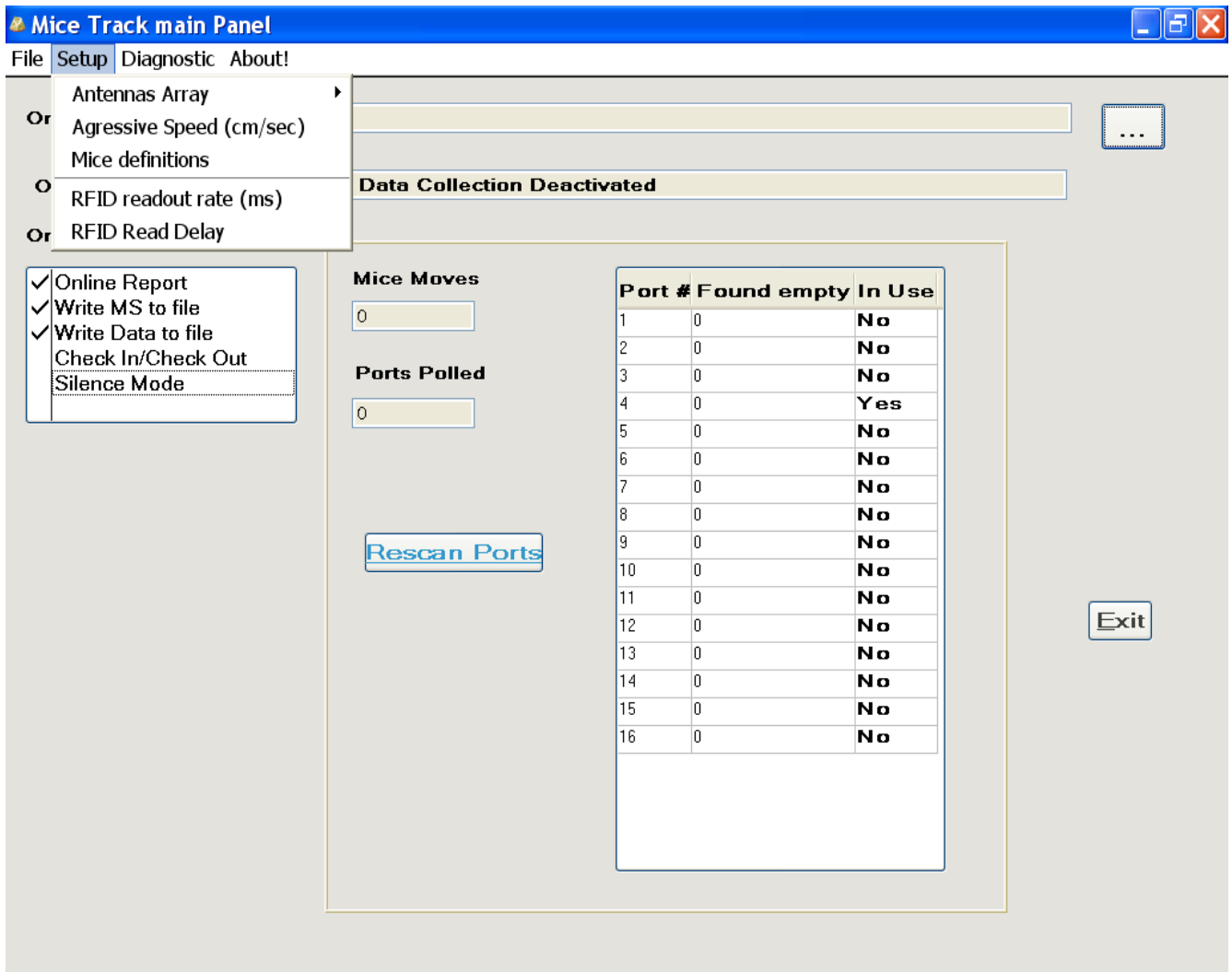


Fig. 2: RFID data acquisition software – "Setup" Options

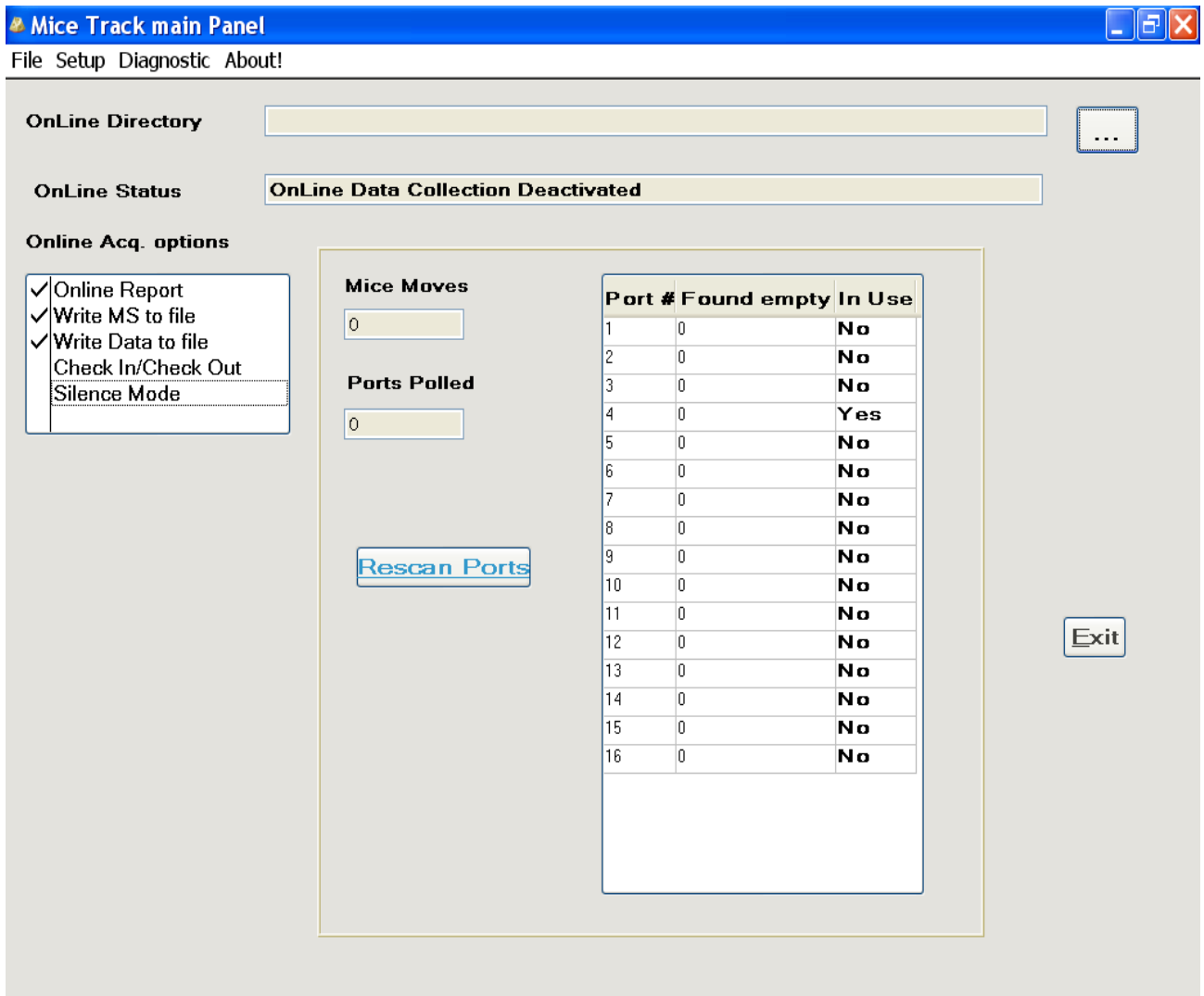


Fig. 3: RFID data acquisition software – Main GUI Window

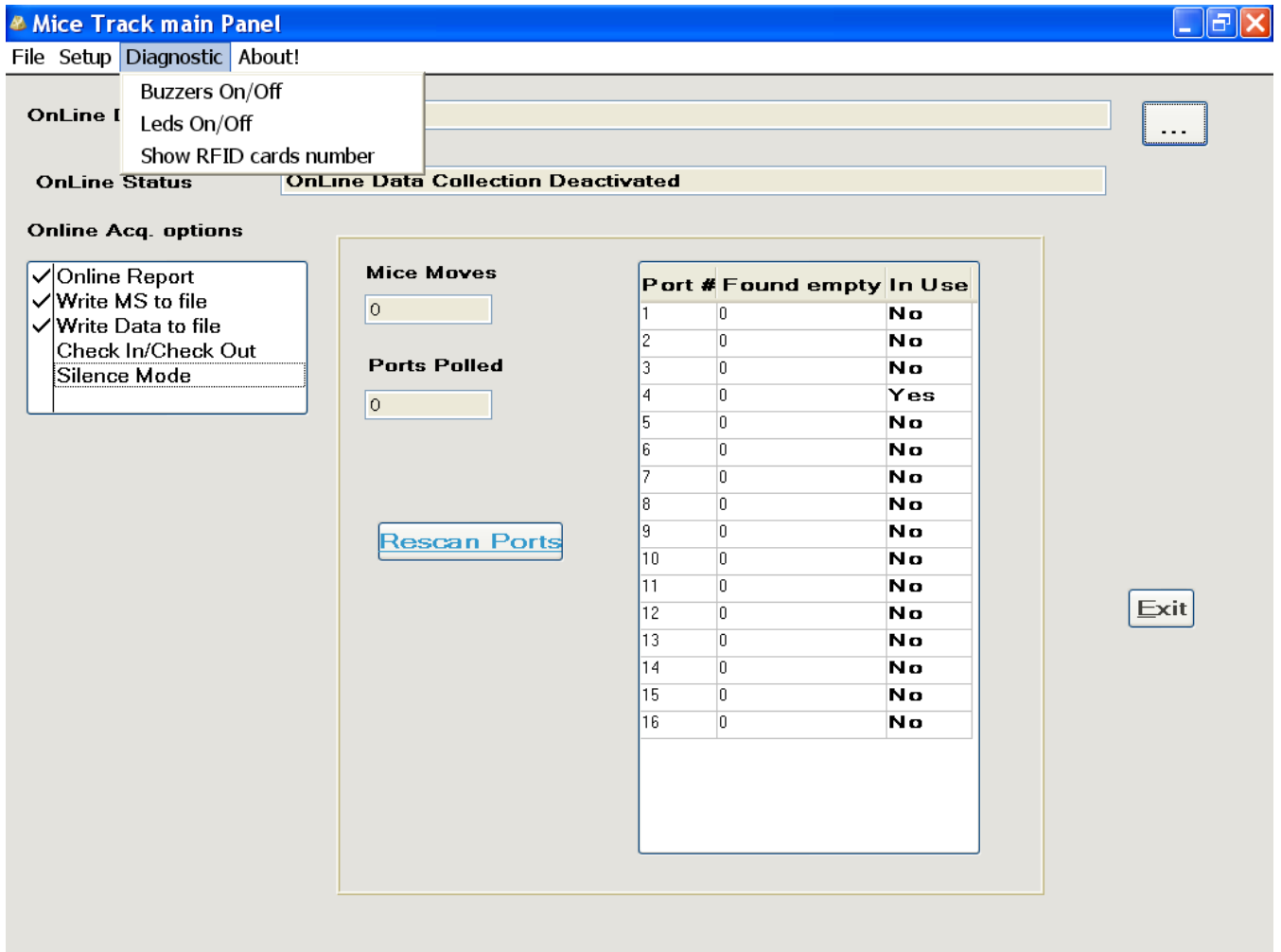


Fig. 4: RFID data acquisition software – "Diagnostics" Option