

Introduction to Neuroscience: Behavioral Neuroscience

# Echolocation in Bats

Nachum Ulanovsky

Department of Neurobiology, Weizmann Institute of Science

2021–2022, 2<sup>nd</sup> semester

# Bats comprise ~23% of mammals and are versatile foragers

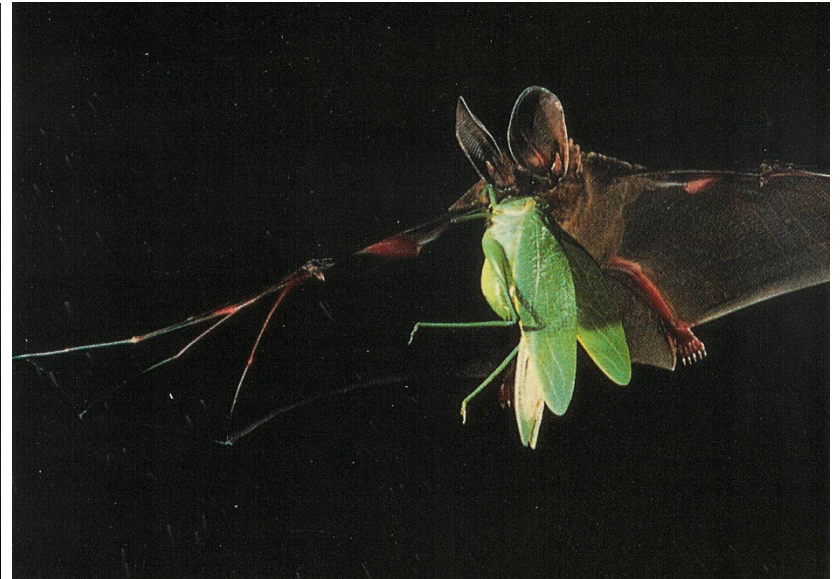


Photo: Merlin Tuttle

**~1,300 species of bats in total (~ 1,000 species of echolocating bats)**

# Much of the bats' success is due to echolocation (biosonar)

Most bats use Echolocation – which also shaped their ears, noses... and names



Grey long-eared bat  
*Plecotus austriacus*



Greater horseshoe bat  
*Rhinolophus ferrumequinum*

Big brown bat  
*Eptesicus fuscus*



# Examples of bats hunting using echolocation



Movie: bat catching moth



Movie: bat catching spider

(movies slowed down considerably)

# The bat's sonar system in numbers

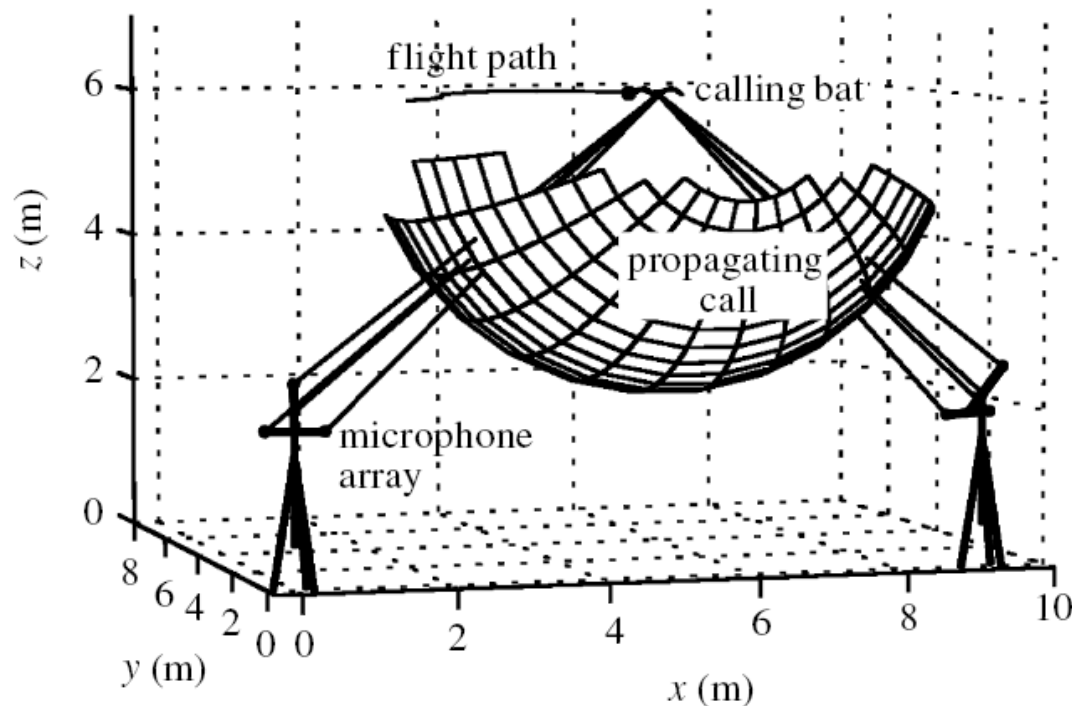
- Frequency range:  $\sim 5$  kHz – 200 kHz  
(depends on species)
- Frequency resolution: 0.1 %
- Temporal resolution: 400 ns, and possibly even 10 ns (resolution of target range in bats)
- Directional (azimuthal) accuracy as good as  $1\text{-}2^\circ$   
(compared to  $10\text{-}15^\circ$  in passive hearing by bats and rodents of similar size)
- Dynamic range (for echo sound intensity): 140 dB

} Good frequency resolution *and* good temporal resolution → the auditory system is *not* a simple Fourier analyzer

# The bat's sonar system in numbers (Cont.)

- Dynamic range (for echo sound intensity): 140 dB

*Bats can detect echoes from  $\sim 0$  dB SPL ( $20 \mu\text{Pa}$ ) up to perfectly-reflected echoes of their own calls, which have an emitted power of 140 dB SPL*

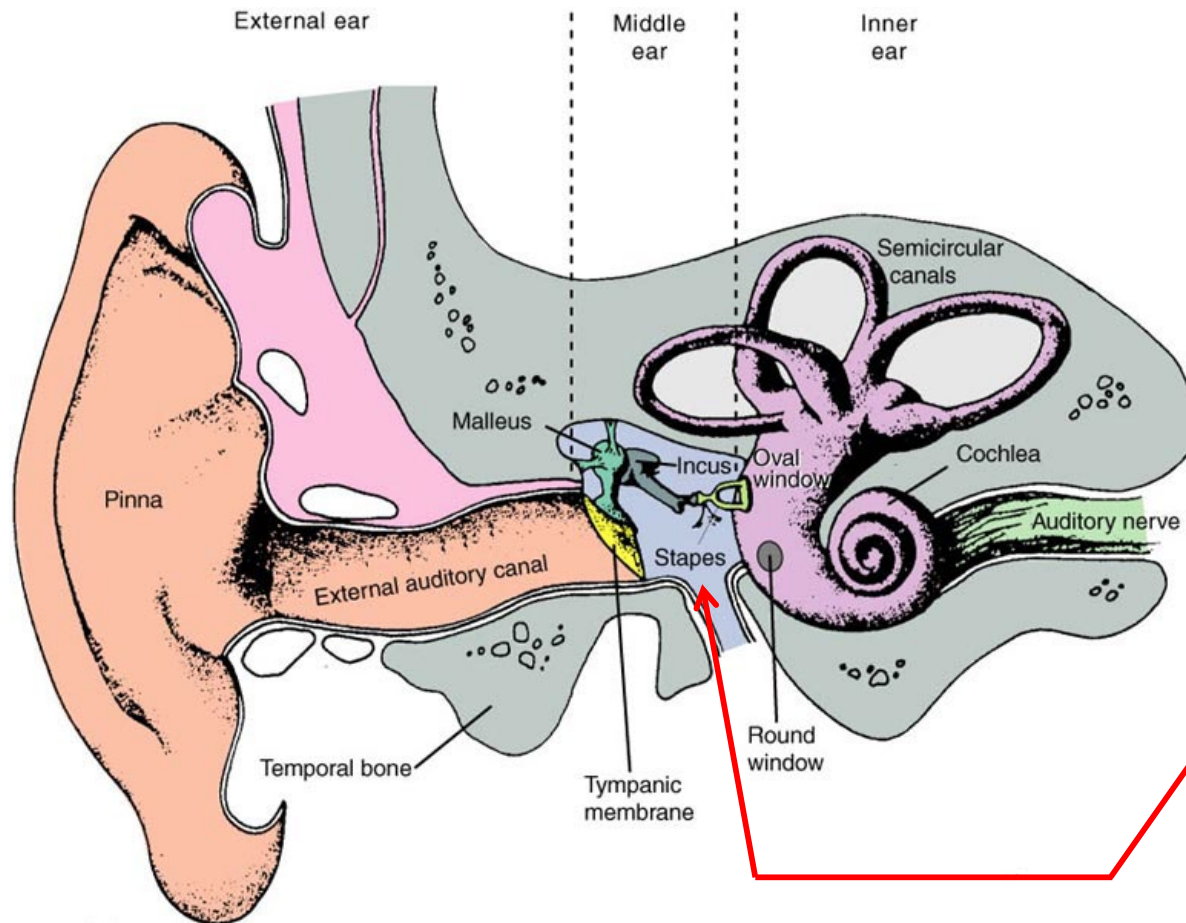


To actually measure the emitted power in free-flying bats, researchers have to reconstruct the bat's 3-D position, while it flies outdoors (as it does *not* use strong calls indoors): for this, they use arrays of microphones → Differential Time Of Arrival (DTOA) localization technique in 3-D (similar to the way GPS works).

# The bat's sonar system in numbers (Cont.)

- Dynamic range (for echo sound intensity): 140 dB

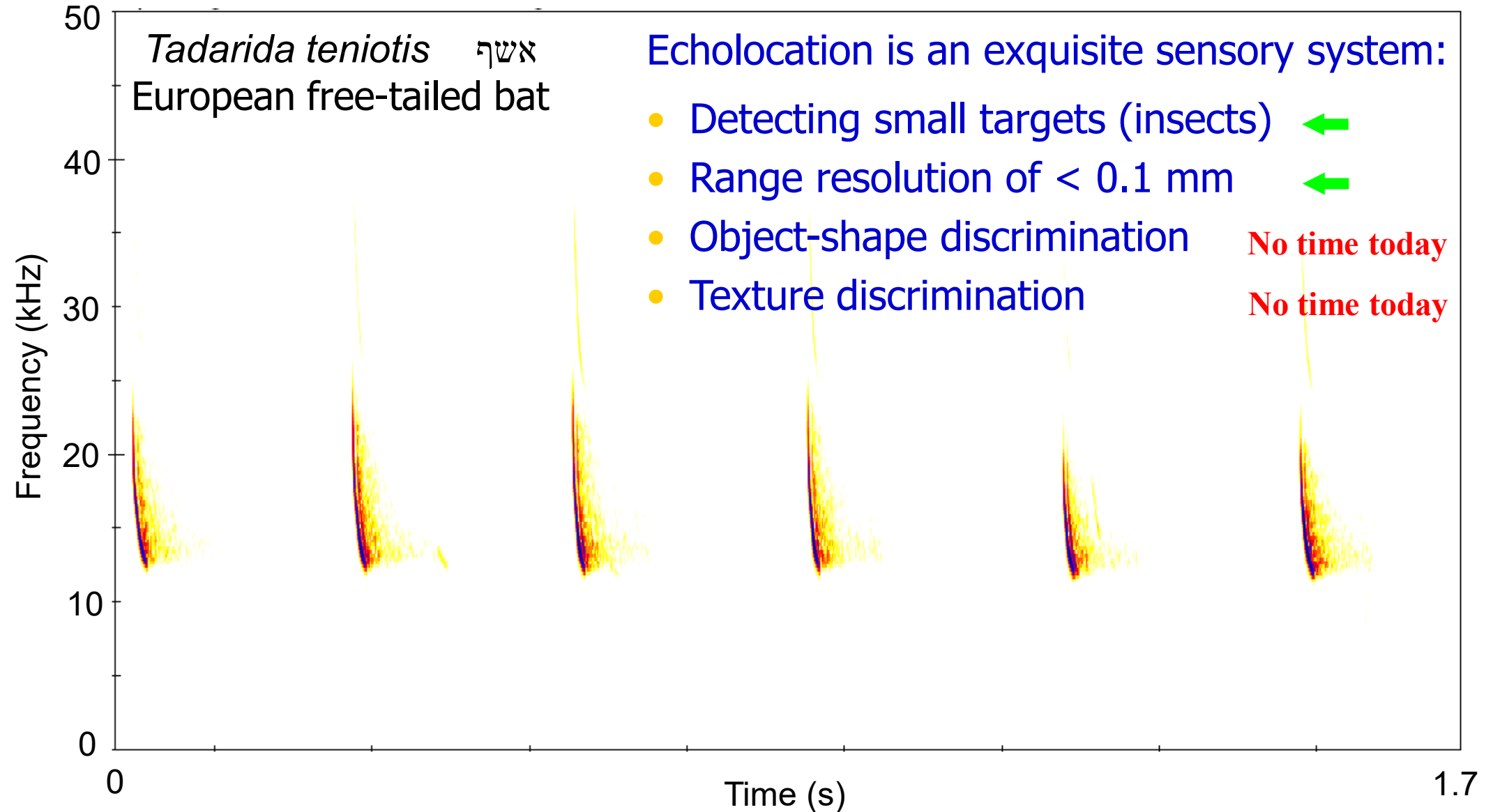
*Bats can detect echoes from ~ 0 dB SPL (20  $\mu$ Pa) up to perfectly-reflected echoes of their own calls, which have an emitted power of 140 dB SPL*



And what do bats do in order to avoid self-deafening during sound production?

- During sound production, the middle ear bones get almost fully disconnected from each other, in order to avoid self-deafening (this disconnection is partially also present in vocalizing humans).
- Brainstem mechanisms.

# A sequence of echolocation calls produced by one bat



# Talk Outline



- Echolocation (biosonar): Behavior and Sensory Ecology
- Neurobiology of Echolocation

# Talk Outline



- Echolocation (biosonar): Behavior and Sensory Ecology
- Neurobiology of Echolocation

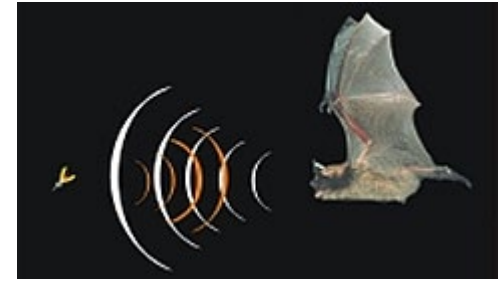
→ I will *not* have time to talk today about other echolocating animals, such as: dolphins (and other odontocete whales), shrews, swiftlets, oilbirds.



**Donald Griffin:** Discovered bat echolocation in 1935 as a graduate student at Harvard, while doing a Ph.D on a different topic (migration and navigation in bats).

*STUDENTS:* Take good example from him!

# The basics of biosonar



Basic sonar math:

*Target range* :  $R = c T / 2$

*Doppler shift* :  $f_r = f_e (1 + 2v/c)$

} The factors  $\frac{1}{2}$  and 2 in these equations are due to the two-way travel

*Target direction*: Computed based on time-difference & intensity difference between ears, and based on spectral filtering by the ears

Where:

R = target range

c = speed of sound in air ~ 340 m/s

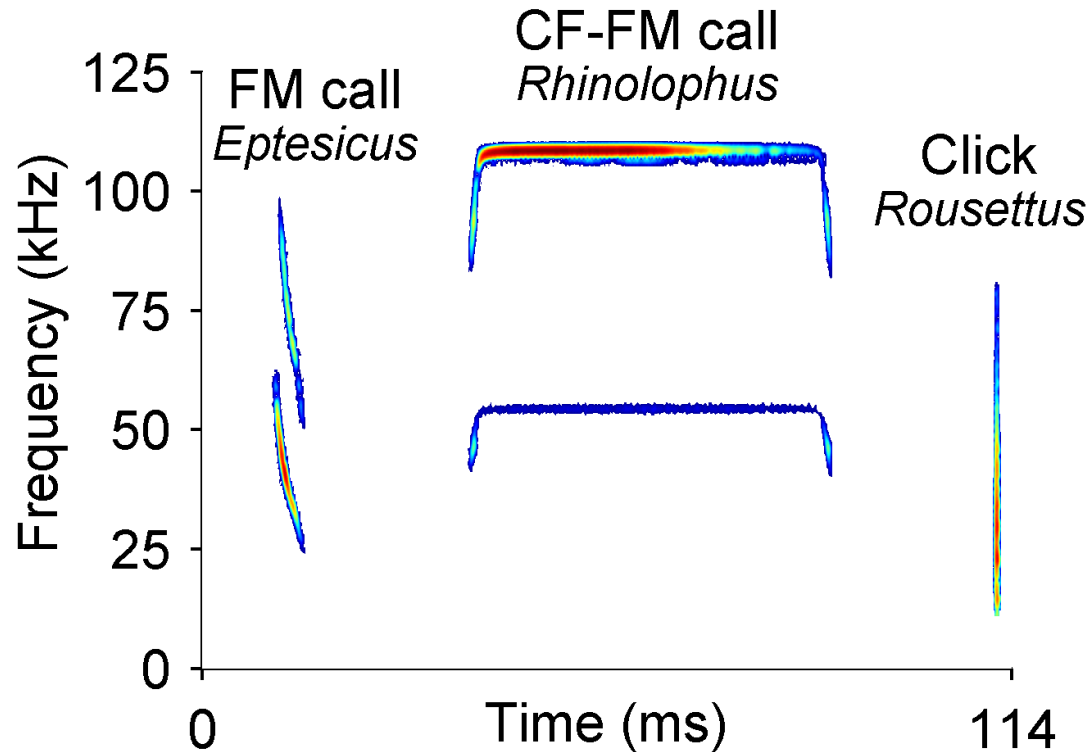
T = pulse-echo delay

$f_r$  = frequency as received in the bat's ears

$f_e$  = frequency emitted from bat's mouth (or bat's nose)

v = bat's flight speed

# Basic types of echolocation calls



The most-studied bats are:

FM bats, that use frequency modulated (FM) calls with duration ~ 0.25 ms – 5 ms, and duty cycle < 10%

and

CF-FM bats, that have a long constant frequency (CF) component, ~10 ms – 40 ms in duration and with a duty cycle > 30% – these bats also have an FM chirp at the beginning and/or end of the call.

Ulanovsky & Moss, *PNAS* (2008)

- **But why do bats use such calls?**
- **And why do they use ultrasound at all?**

The Sonar Equation (“Radar Equation”) gives the answer

$$P_{echo} \sim \frac{P_{call} G_{tr} A_{ear} \sigma \exp(-2\alpha R)}{R^4}$$

Where:

$P_{echo}$  = Power of echo that gets to the bat

$P_{call}$  = Power of sonar call produced by the bat

$R$  = target range

$G_{tr}$  = Gain of transmitting antenna (mouth or nose)

$A_{ear}$  = Area of receiving antenna (i.e., the size of the ear)

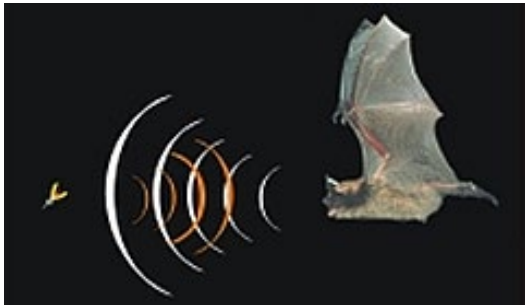
$\lambda$  = Wavelength

$\sigma$  = Sonar cross section

$\alpha$  = Atmospheric attenuation constant

# The Sonar Equation: intuition

$$P_{echo} \sim \frac{P_{call} G_{tr} A_{ear} \sigma \exp(-2\alpha R)}{R^4}$$



Signal of power  $P_{call}$  is:

- ... transmitted from antenna with gain  $G_{tr}$  (*directionality*)
- ... reduced  $\sim 1/R^2$  via geometric spreading (“spreading loss”)
- ... reduced also via atmospheric attenuation,  $\exp(-\alpha R)$
- ... a fraction  $\sigma$  is reflected back to the bat
- ... reduced *again*  $\sim 1/R^2$ , giving a total spreading loss  $\sim 1/R^4$
- ... attenuated *again*  $\exp(-\alpha R)$  = total attenuation  $\exp(-2\alpha R)$
- ... received by an antenna with area  $A_{ear}$  (ear size)

# The Sonar Equation (“Radar Equation”)

$$P_{echo} \sim \frac{P_{call} G_{tr} A_{ear} \sigma \exp(-2\alpha R)}{R^4}$$

Many theoretical similarities between RADAR and SONAR.

**RADAR** – Radio detection and ranging

**SONAR** – Sound detection and ranging

# Most elements of the Sonar Equation depend on frequency

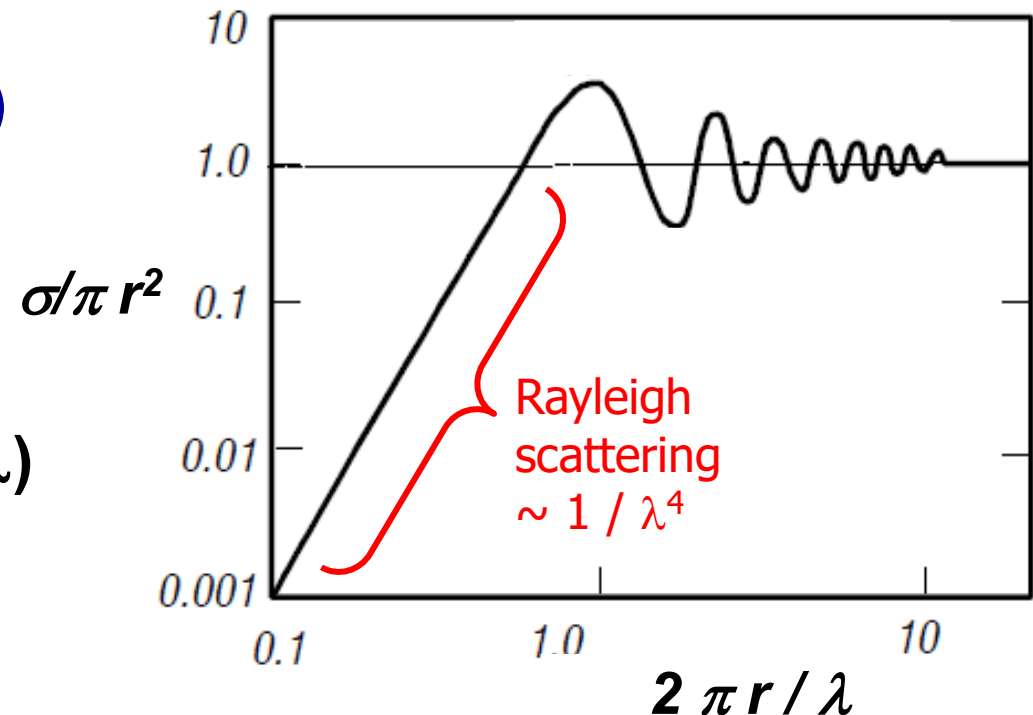
$$P_{echo} \sim \frac{P_{call} G_{tr} A_{ear} \sigma \exp(-2\alpha R)}{R^4}$$

$\sigma$  = Sonar cross section =  $\sigma(f)$

Depends on:

- Frequency:  $f^4 \sim 1 / \lambda^4$
- Target Size/Wavelength ( $r / \lambda$ )
- Geometry
- Materials

Sonar cross section  $\sigma$  for sphere with radius  $r$



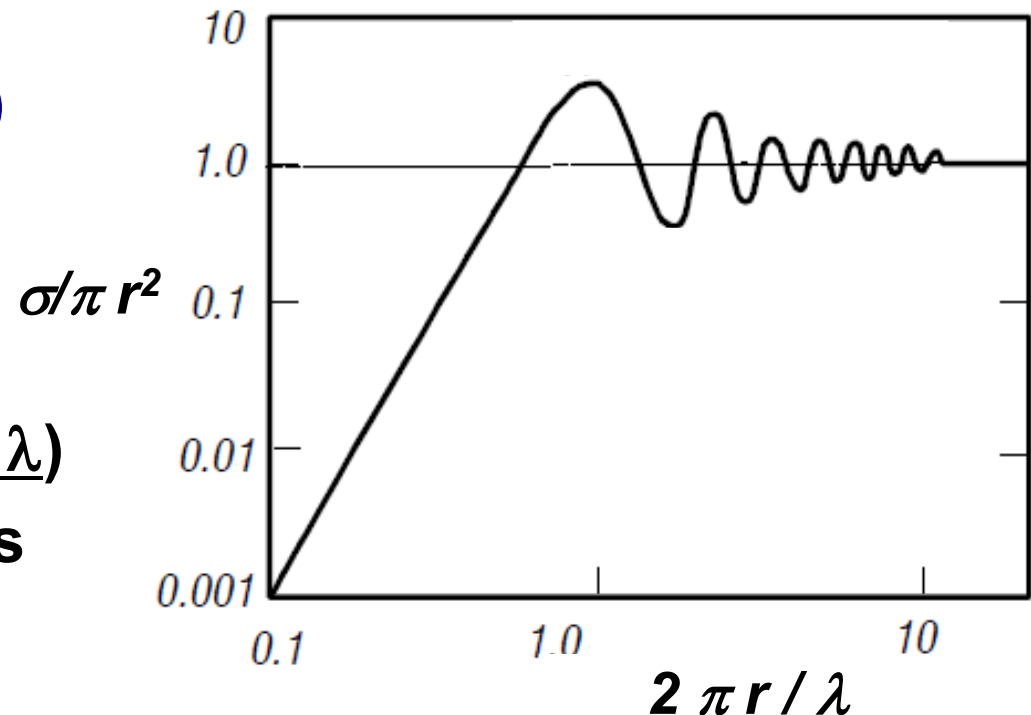
Most elements of the Sonar Equation depend on frequency

$$P_{echo} \sim \frac{P_{call} G_{tr} A_{ear} \sigma \exp(-2\alpha R)}{R^4}$$

$\sigma$  = Sonar cross section =  $\sigma(f)$

→ Bats use ultrasound (small  $\lambda$ )  
in order to detect small targets  
(small  $r$ )

*Sonar cross section  $\sigma$  for sphere with radius  $r$*



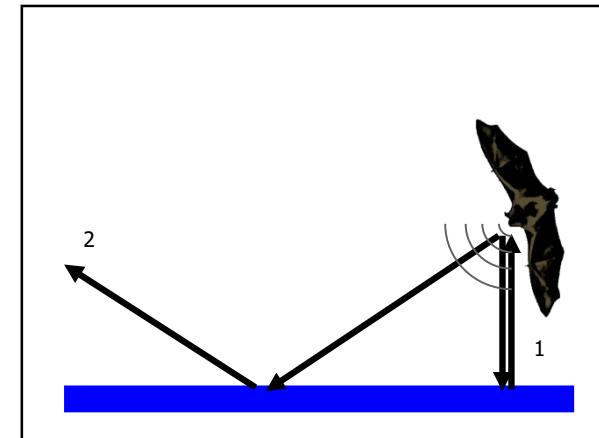
Most elements of the Sonar Equation depend on frequency

$$P_{echo} \sim \frac{P_{call} G_{tr} A_{ear} \sigma \exp(-2\alpha R)}{R^4}$$

$\sigma$  = Sonar cross section =  $\sigma(f)$

Geometry and type of Material  
determine how much a sound  
would be *attenuated*, *scattered*  
or *reflected*

An extreme example of smooth  
material & flat geometry with  
*specular reflection* only: Water



Most elements of the Sonar Equation depend on frequency

$$P_{echo} \sim \frac{P_{call} G_{tr} A_{ear} \sigma \exp(-2\alpha R)}{R^4}$$

Bat hunting fish by using the non-specular reflections caused by ripples from underwater fish



Bat drinking from water



# Most elements of the Sonar Equation depend on frequency

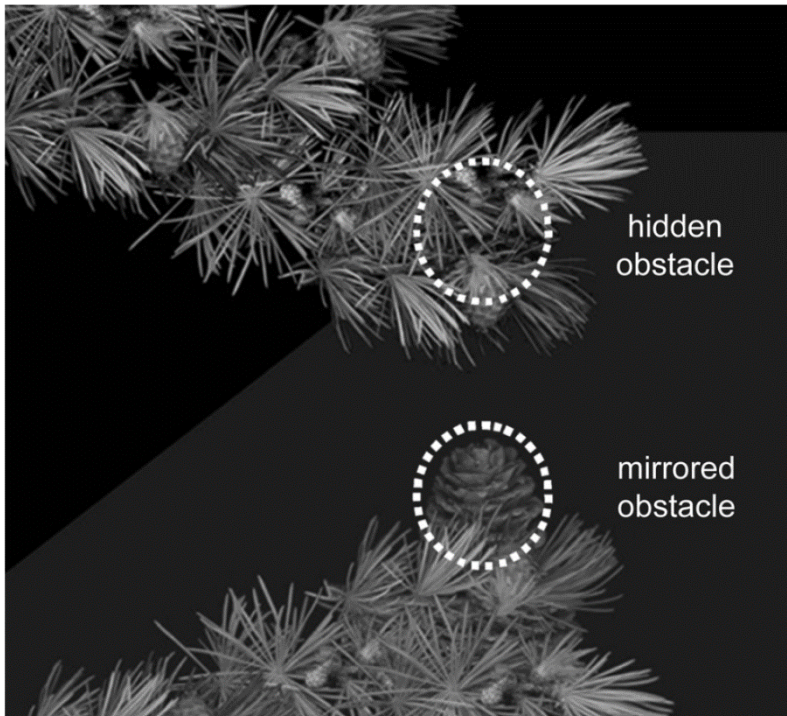
**Bat drinking  
from smooth  
water**

# Most elements of the Sonar Equation depend on frequency

**Bat attempts drinking from a smooth metal plate – indicating that the sonar smoothness of the surface is the indicator of “water” for bats.**

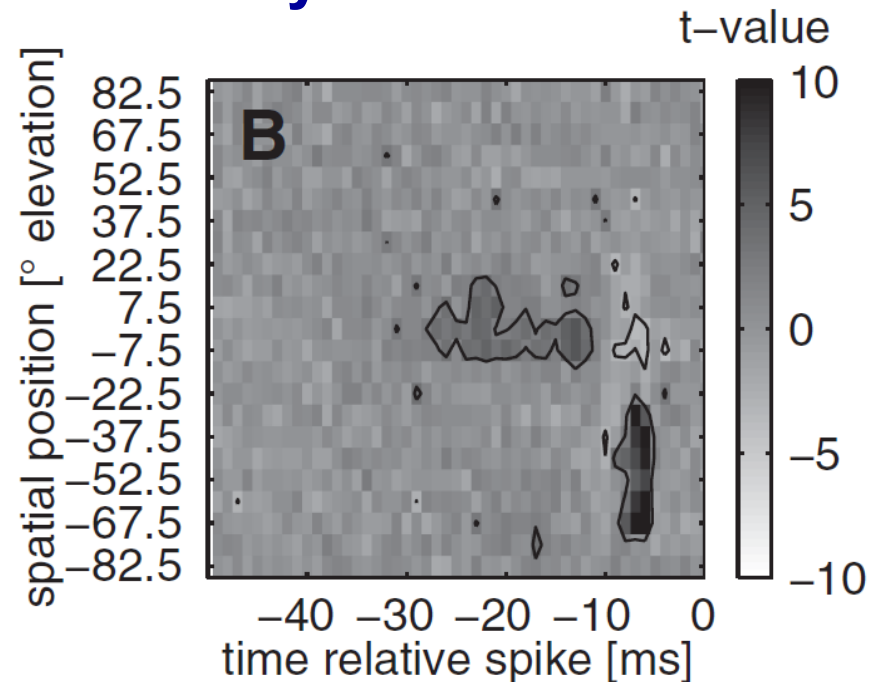
# More about water surfaces

Water surfaces act as acoustic mirrors – creating mirror symmetry in the available echo information



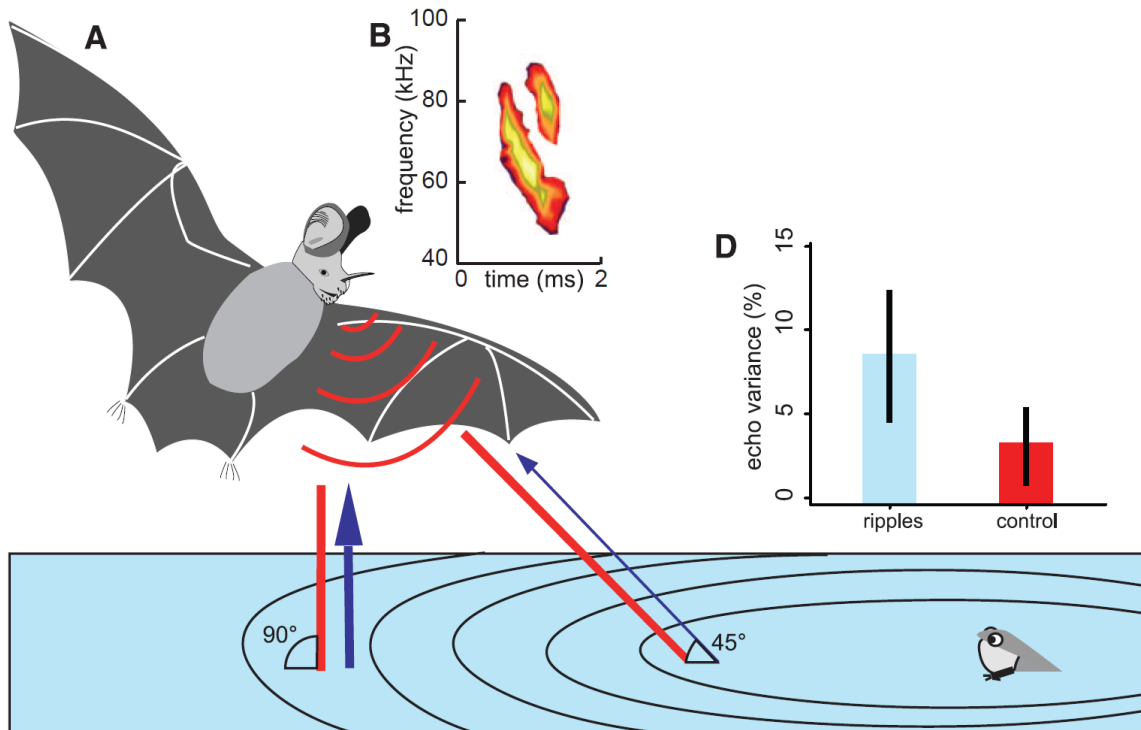
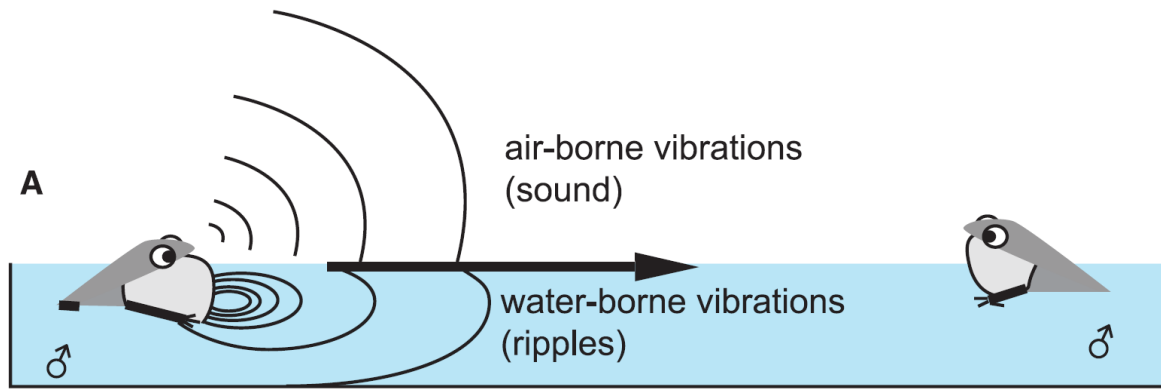
Genzel et al. 2014

Neurons in the bat auditory cortex may encode these mirror symmetries



This neuron (and many others) responds to an echo coming from a higher elevation followed by an echo coming from a lower elevation → e.g. the longer acoustic path of an echo reflected from water below

# More about water surfaces



- This study showed that frog-eating bats preferentially attack combined cues = acoustic call of a frog + water-ripples.
- Water ripples last for 2-3 seconds after the frog stopped calling – and the bat can utilize this to locate the frog, based on the ripples as a “mechanical memory” that points to the precise location of the frog (center of concentric rings → frog).

Halfwrek et al., *Science* (2014)

# Most elements of the Sonar Equation depend on frequency

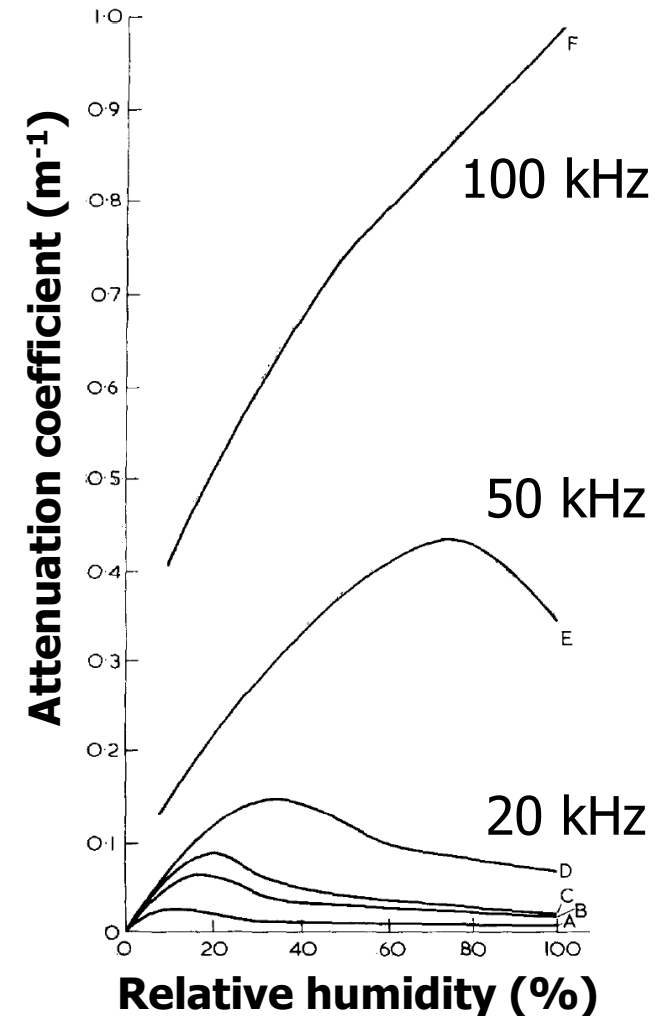
$$P_{echo} \sim \frac{P_{call} G_{tr} A_{ear} \sigma \exp(-2\alpha R)}{R^4}$$

$\alpha$  = Atmospheric attenuation coefficient =  $\alpha(f)$

Atmospheric attenuation coefficient  $\alpha(f)$   
strongly increases with frequency



- At low frequencies → Geometric spreading [ $1/R^4$ ] is the dominant range-dependent factor.
- At high frequencies → Atmospheric attenuation [ $\exp(-2\alpha R)$ ] is the dominant factor, and it strongly limits the maximal possible range of echolocation at such frequencies.

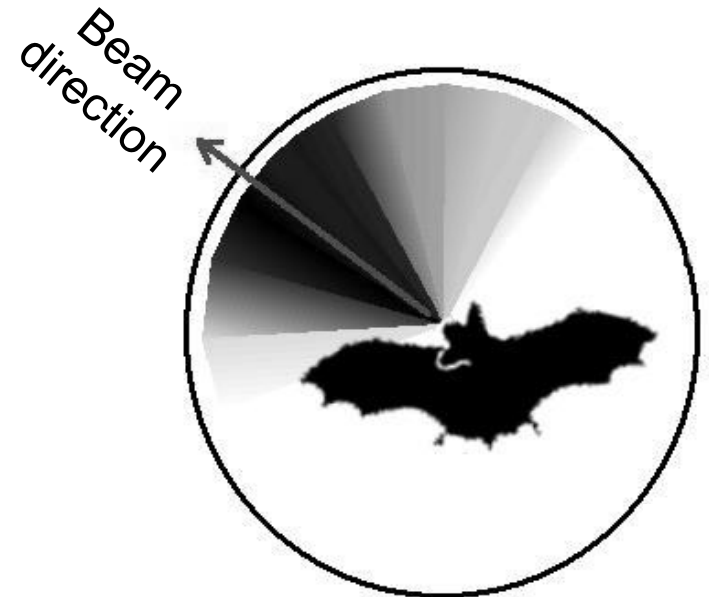


Most elements of the Sonar Equation depend on frequency

$$P_{echo} \sim \frac{P_{call} G_{tr} A_{ear} \sigma \exp(-2\alpha R)}{R^4}$$

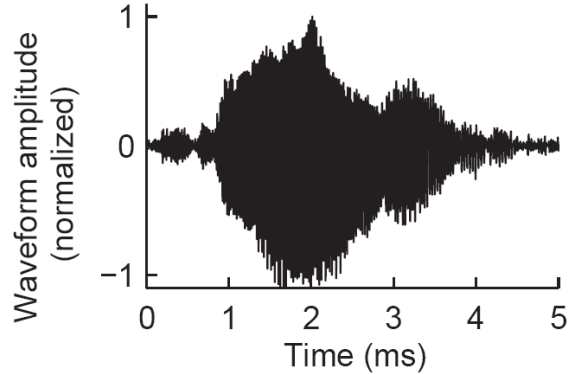
$G_{tr}$  = Gain of transmitting antenna =  $G_{tr}(f)$

- $G_{tr} \sim f^2 \sim 1 / \lambda^2$
- Beam width (angle, °)  $\sim 1 / f \sim \lambda$

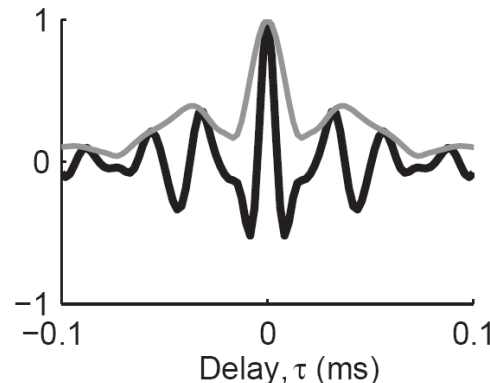
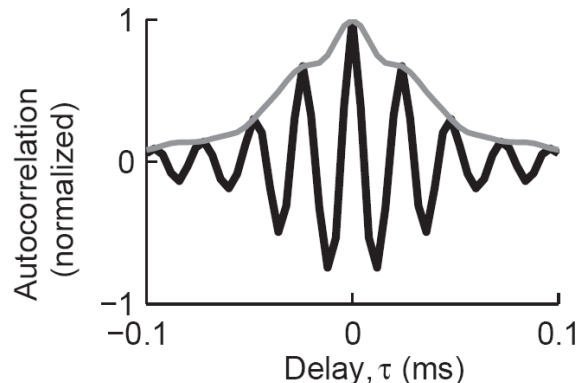
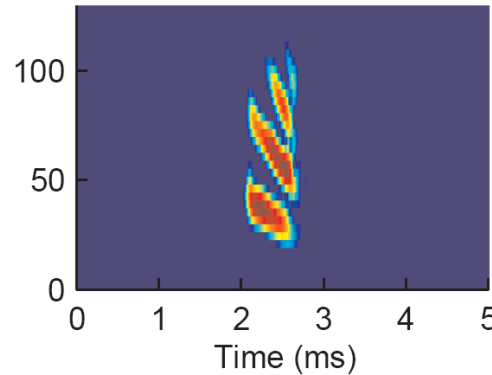
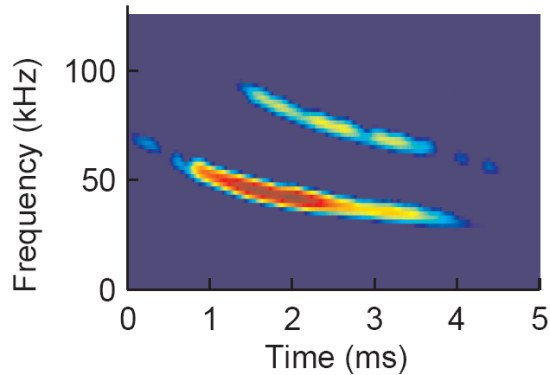
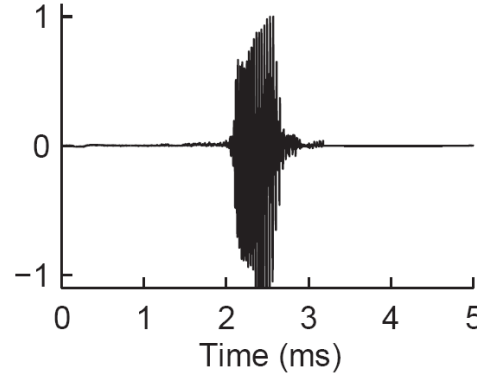


# Pulse compression: Increasing $P_{echo}$ beyond the Sonar Eq.

Big brown bat  
search call



Big brown bat  
terminal (buzz) call

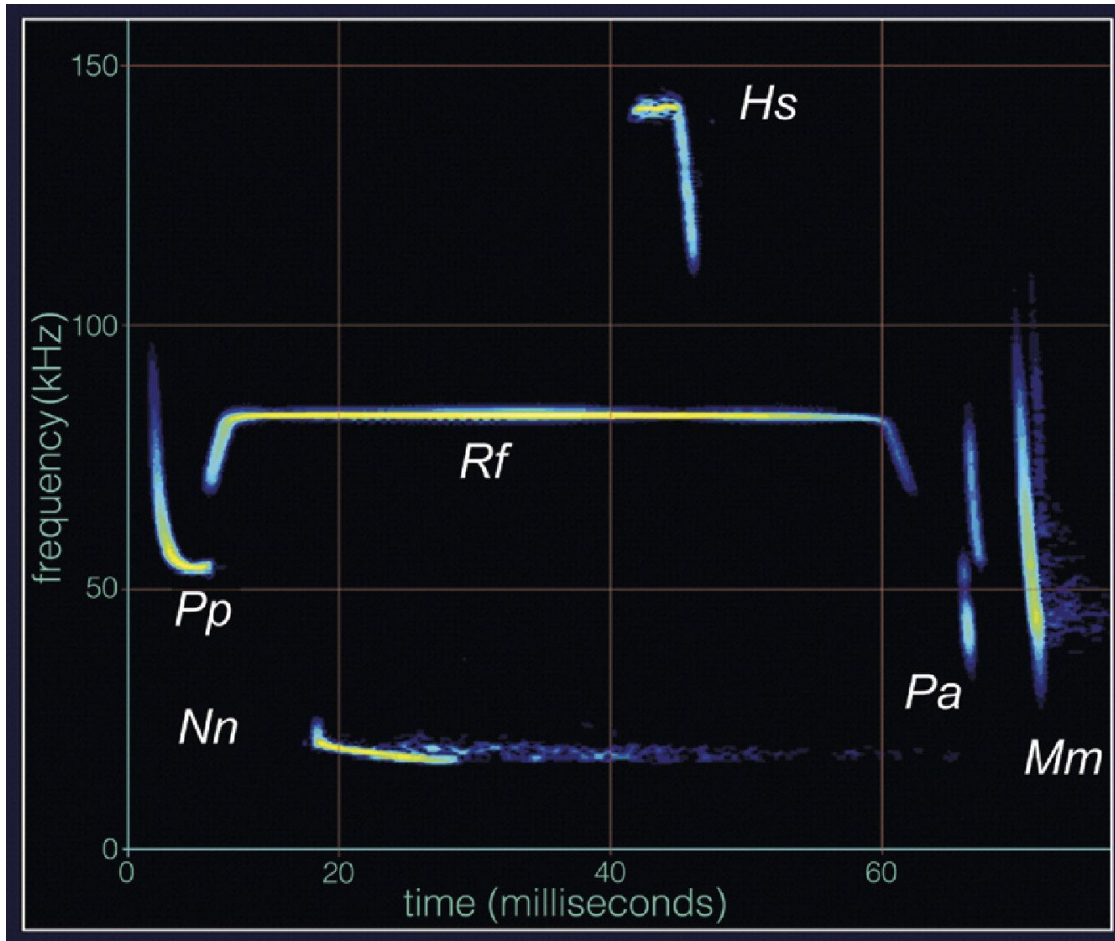


## Pulse compression:

- Increases  $P_{echo}$  beyond what is given by the Sonar Equation.
- Improves the time resolution!

Yovel, Geva-Sagiv, Ulanovsky,  
*JCP-A* 2011

# Pulse compression: Increasing $P_{\text{echo}}$ beyond the Sonar Eq.



## Pulse compression:

- Time resolution is inversely proportional to the chirp bandwidth:  
 $\Delta t \sim 1 / \Delta f$

Examples of biosonar calls from a variety of bat species:  
Almost all use some amount of Pulse Compression  
("chirp" or Frequency Modulation, FM).

# Some tradeoffs in biosonar signal design

- Call frequency:

Frequency  $\uparrow$  allows detecting smaller insects (min. target size  $\sim$  wavelength).

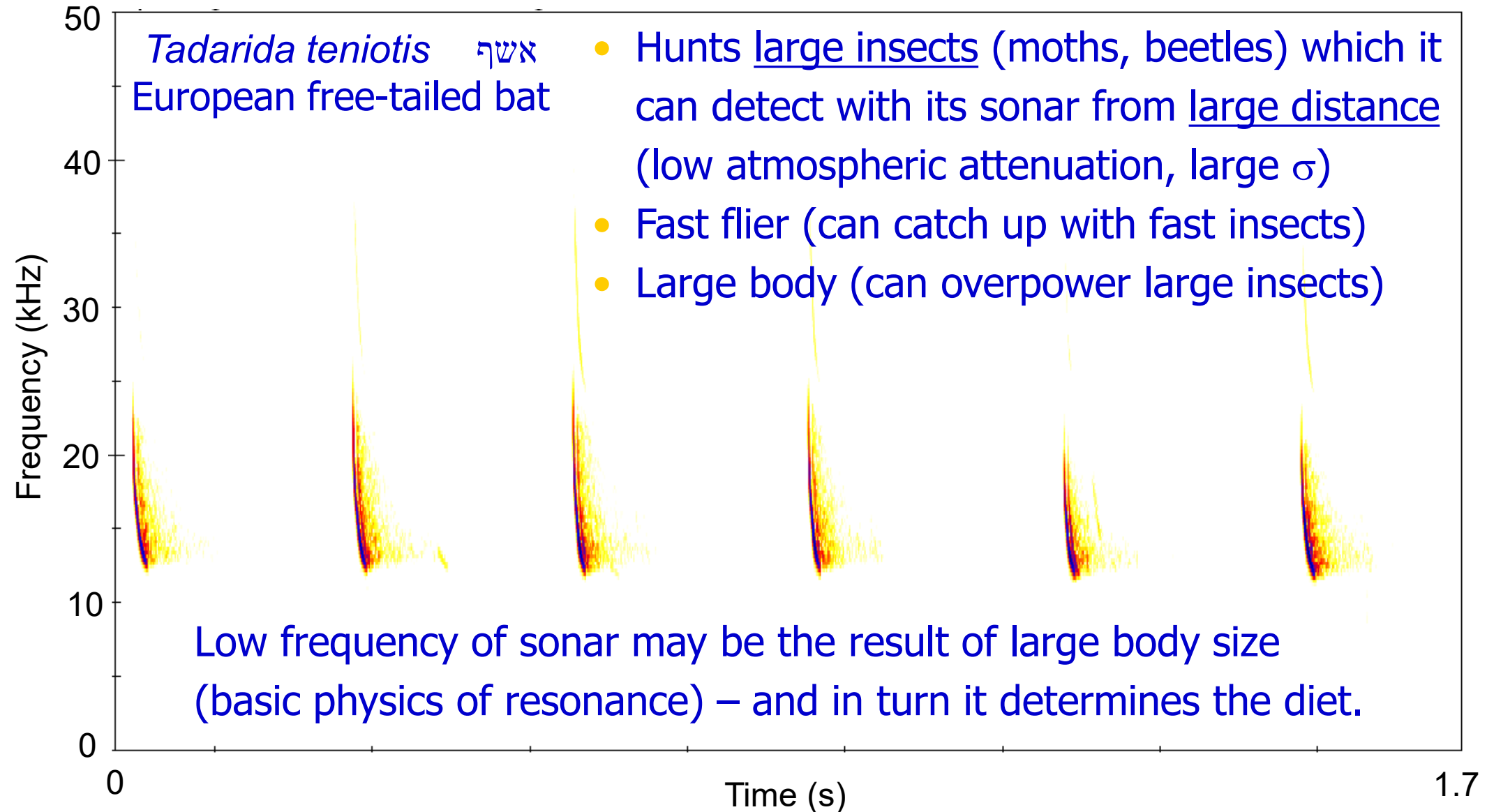
Frequency  $\downarrow$  allows longer detection range (less atmospheric attenuation).

- Call bandwidth:

Bandwidth  $\uparrow$  allows more accurate range estimation ( $\Delta t \propto 1/\text{Bandwidth}$ ).

Bandwidth  $\downarrow$  allows better detection (more energy within neural bandwidth).

# This is not just theory: Biosonar characteristics may in fact determine the entire lifestyle of a bat



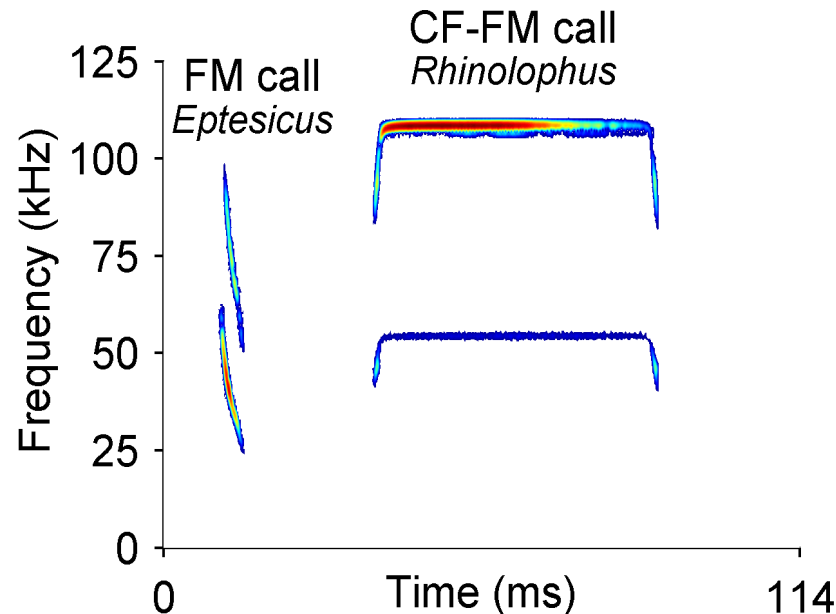
## Coming back to our original questions...

- **Why do bats use such calls?**

- **Pulse compression (in both FM bats and CF-FM bats).**
- **Computing Doppler shifts (by CF-FM bats: see below).**

- **Why do they use ultrasound at all?**

- **For detecting small targets (need small  $\lambda$  to detect small  $r$ ).**



# What signal parameters should we expect bats to change adaptively according to needs / task ?

- Frequency
- Bandwidth
- Intensity (“automatic gain control” for keeping fixed echo intensity)
- Inter-pulse interval (sets the “update rate” of incoming information)
- Pulse duration (determines the duration of the bat’s “deaf times”)

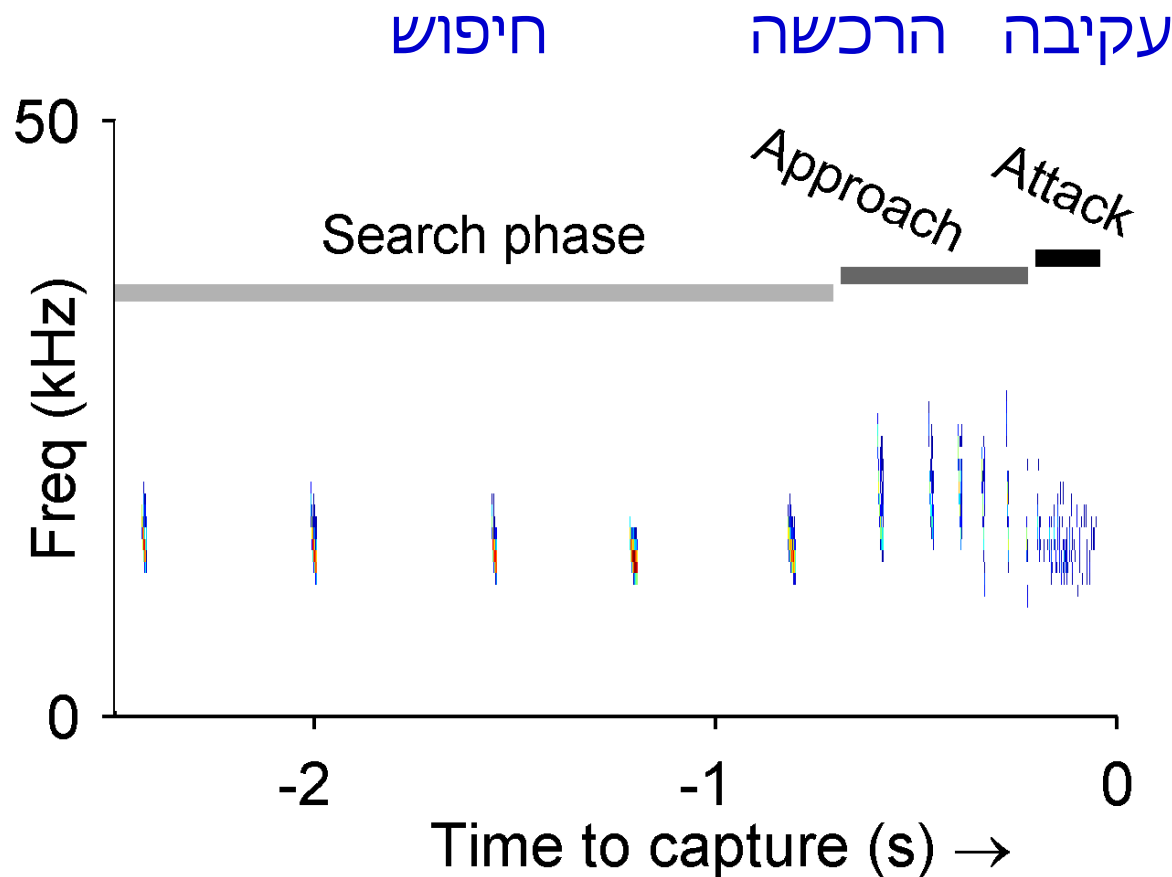
-----

- Direction of emission beam in space (affects echo strength)
- Angular width of emission beam (affects “field of view”)

-----

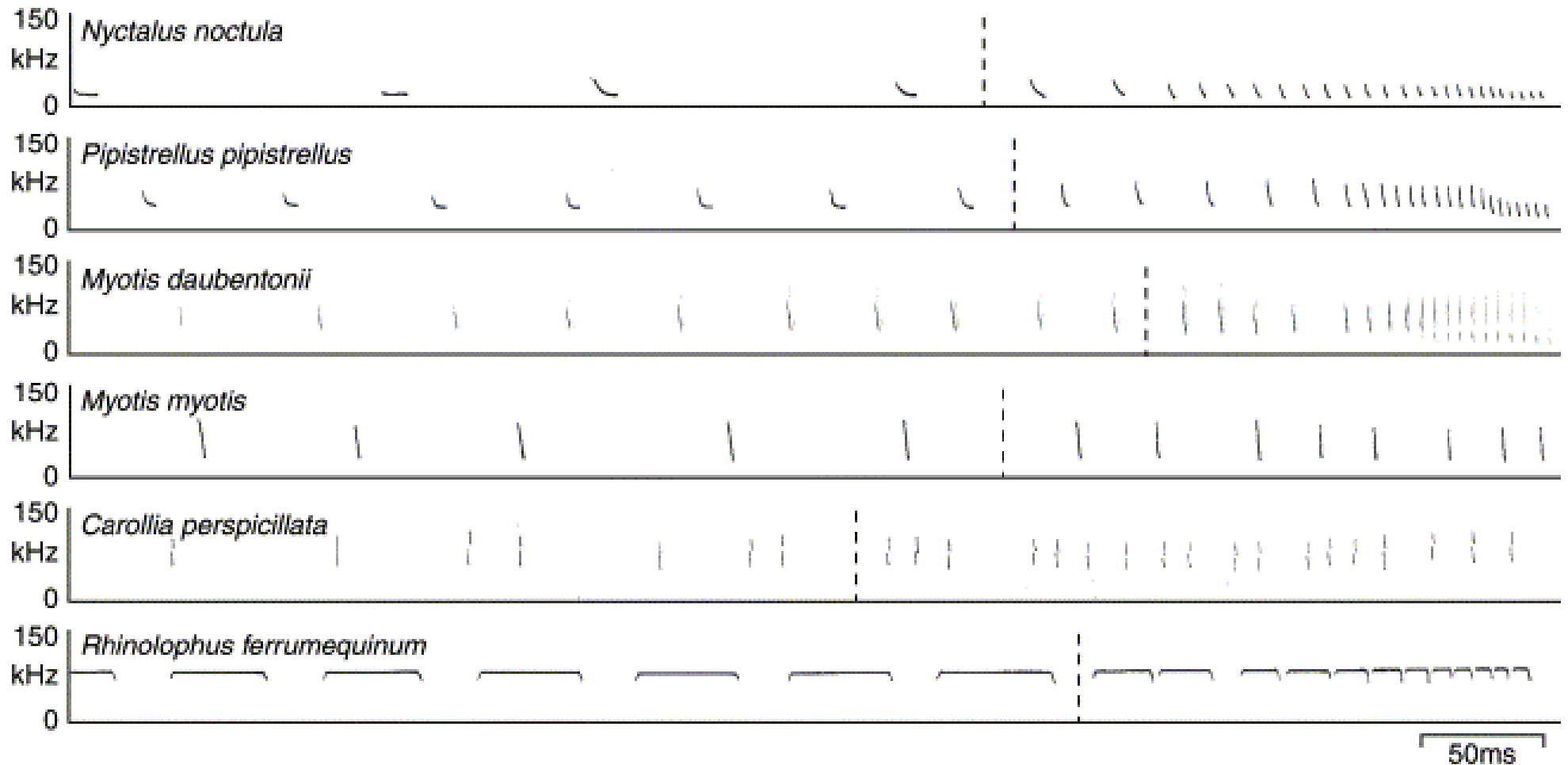
Let’s now look at examples demonstrating that bats indeed can adaptively change each of these parameters.

Bats change their signal design adaptively when attacking an insect.  
Insect-eating bats exhibit typical phase transitions:  
*Search → Approach → Tracking (Attack)*



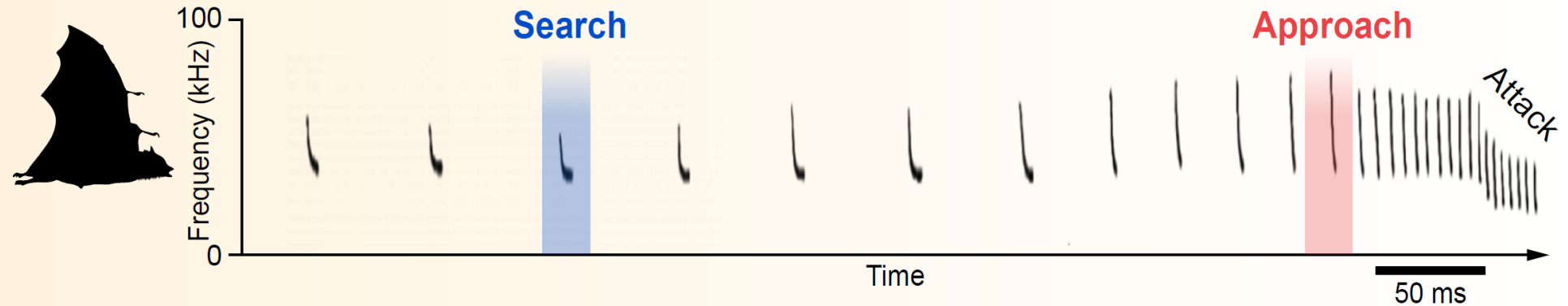
Ulanovsky & Moss,  
*PNAS* 2008

# Examples of six more bat species showing sonar phase transitions: *Search* → *Approach* → *Tracking (Attack)*

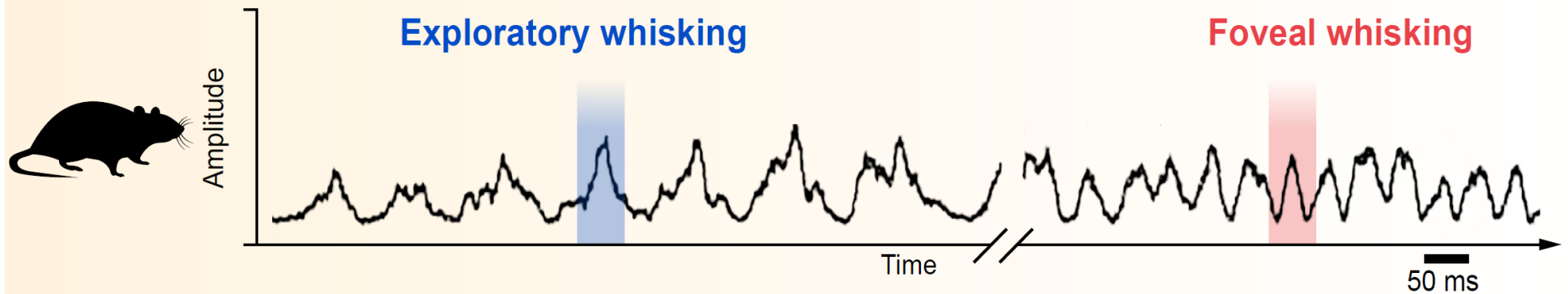


# Increase in sensory acquisition rate when approaching targets: A common theme across active-sensing systems ?

## Bat echolocation



## Rat whisking



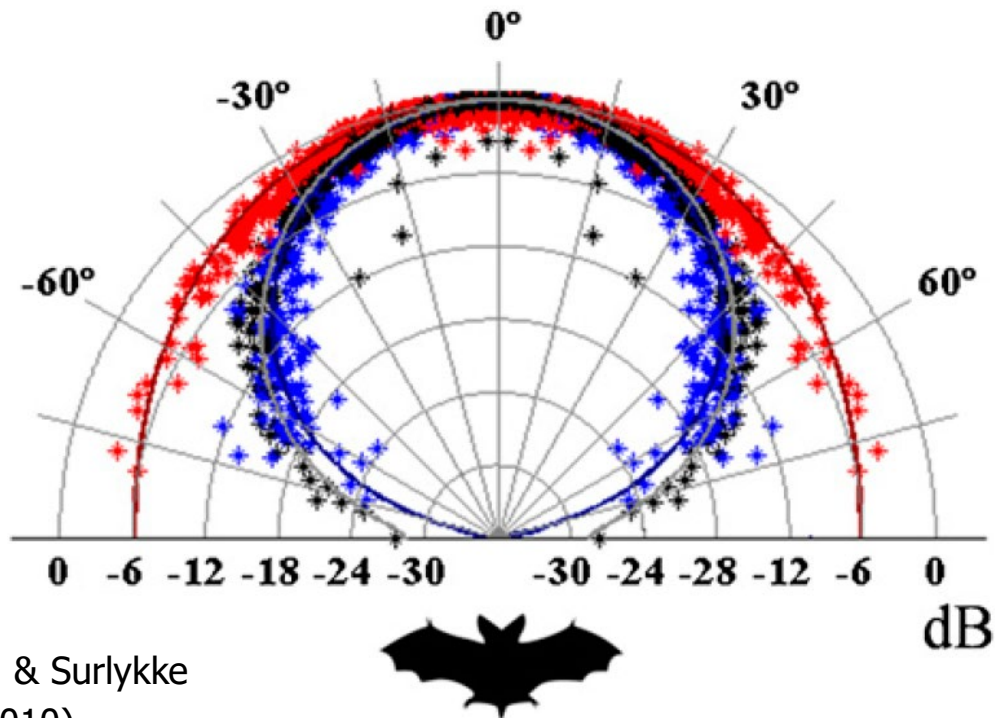
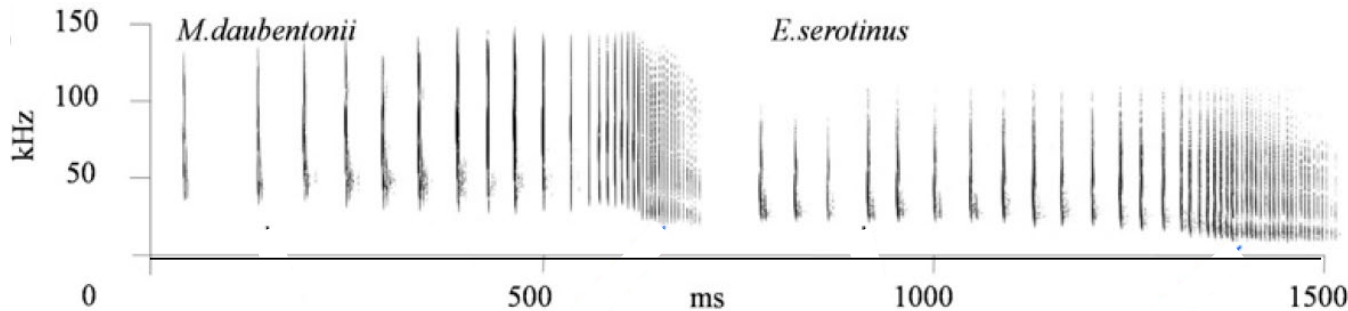
Geva-Sagiv, Las, Yovel, Ulanovsky  
*Nature Rev Neurosci* (2015)

# Rationale for the observed adaptive changes in signal design

Changes in echolocation calls during the closing-in on the insect:

- Larger bandwidth = gives better accuracy in estimating the target range (derived from basic sonar / radar theory = cross correlation of pulse & echo)
- Higher rate of calls = higher update rate, allows better tracking of the moving target.
- Shorter call duration = smaller overlap between the outgoing call (when the bat almost cannot hear anything) and incoming echo, allows tracking insects at closer ranges – almost until the insect's interception.
- Lower intensity = “automatic gain control” for keeping fixed echo intensity.
- Lower call frequency (in some species) = wider emission beam: allows tracking the insect at very short ranges, without losing the insect due to a too-narrow beam.

# Lower call frequency means wider sonar beams: Theory and experiments



*Eptesicus serotinus*:

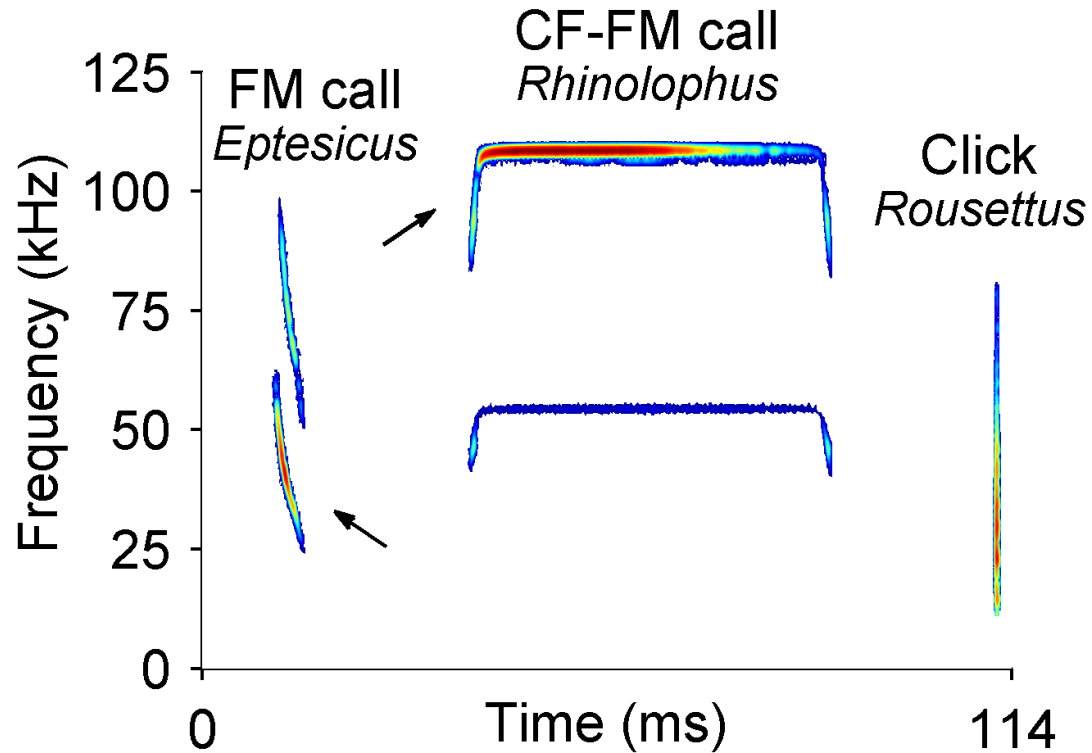
Red – 17.5 kHz

Blue – 35 kHz

Black line – theory (piston model)



# Basic types of echolocation calls (*Revisited*)



Ulanovsky & Moss, *PNAS* (2008)

# Basic types of echolocation calls (Cont.)

## FM bats :

- Emit their sonar calls through the larynx (i.e. through the vocal cords).
- FM bats mostly use a nonlinear chirp (but some species use a linear chirp) → pulse compression.
- In behavioral experiments, FM bats were shown to discriminate jitter in target range down to ~400 ns (less than 0.1 mm), and possibly even 10 ns.
- FM bats can do object recognition, and even object classification.
- FM bats can do texture discrimination (discriminate roughness of surfaces).

# Basic types of echolocation calls (Cont.)

## CF–FM bats :

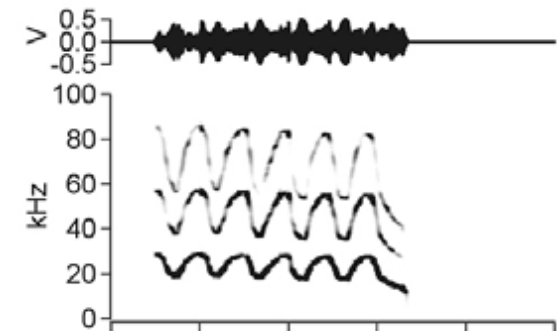
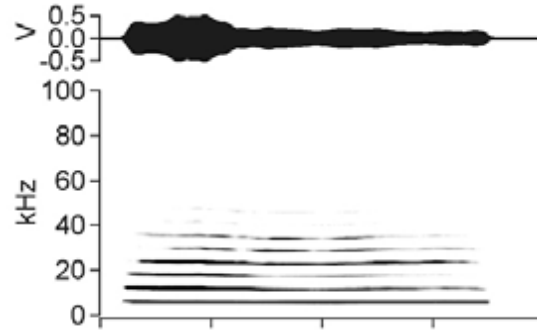
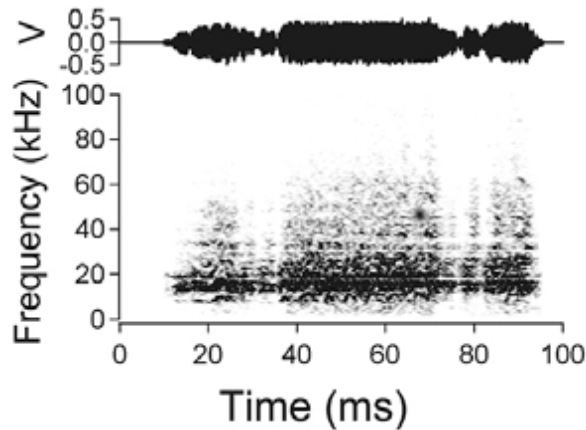
- Emit their sonar calls through the larynx.
- These bats can compute the Doppler shift (target velocity).
- They can detect Doppler modulations caused by the insect's wing flutter.
- These bats can even tell apart different insect species based on their different flutter rate.

# Basic types of echolocation calls (Cont.)

## Clicking bats :

- Emit their sonar signals via tongue-clicks.
- Ultra-short clicks (50-100  $\mu$ s) replace the mechanism of pulse compression of FM and CF-FM bats.
- Interesting strategy for sonar beam-steering (see below).

## ( Bats also have interesting communication calls )



Examples of mustached bat communication calls  
(Kanwal & Rauschecker 2007)

### **Bat communication calls:**

- Are very rich (among mammals, second in richness only to primates).
- Generally have a much lower frequency than the echolocation calls (so if you heard a bat, most likely you heard its communication calls, *not* its echolocation calls – which are usually ultrasonic).
- Learned ! (Vocal Learning – very unique across mammals)

# Usages of bat sonar

- Target detection + catching food (insects, birds, frogs, fish, fruits, flowers...)
- Object recognition (based on echo spectrum); examples:
  - Flower bats: Identifying the flower species, and also the best approach direction to the flower (Sonar Cross Section is maximal at the best direction for food delivery).
  - Fish-eating bats: Identifying the water ripples produced by the fish.
- Landing
- Navigation
- Altimeter
- Collision avoidance



Movie: Swarm of bats above water-tank in Nevada (J. Simmons).

# Collision avoidance – comprehending the incomprehensible

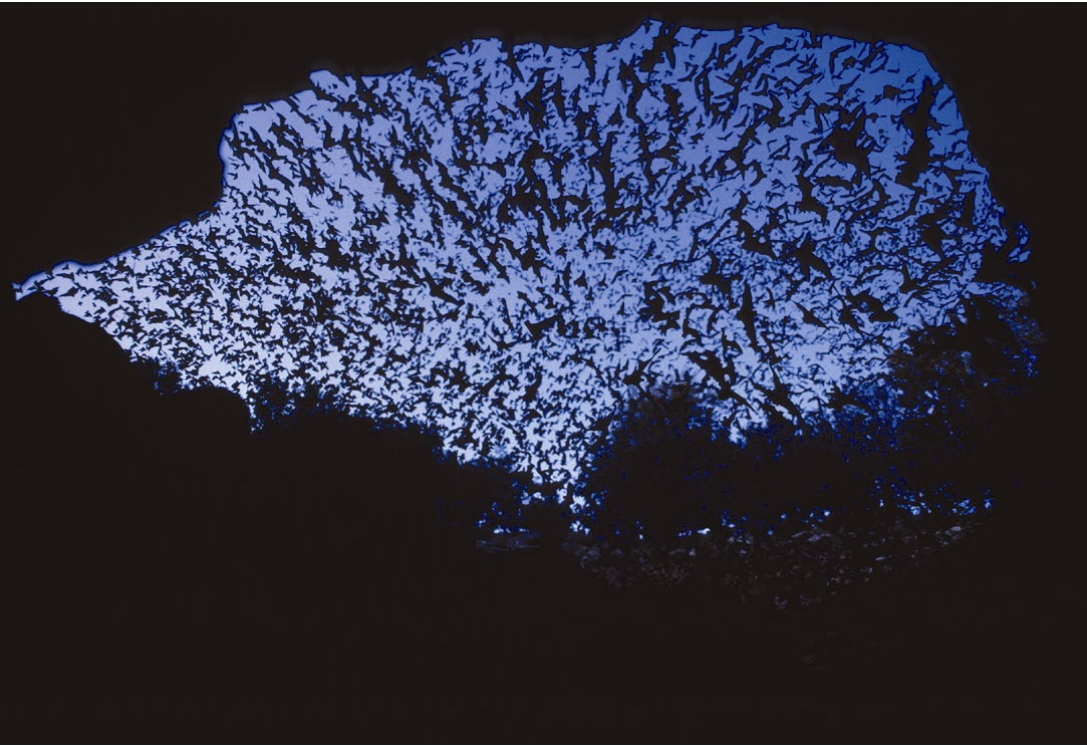
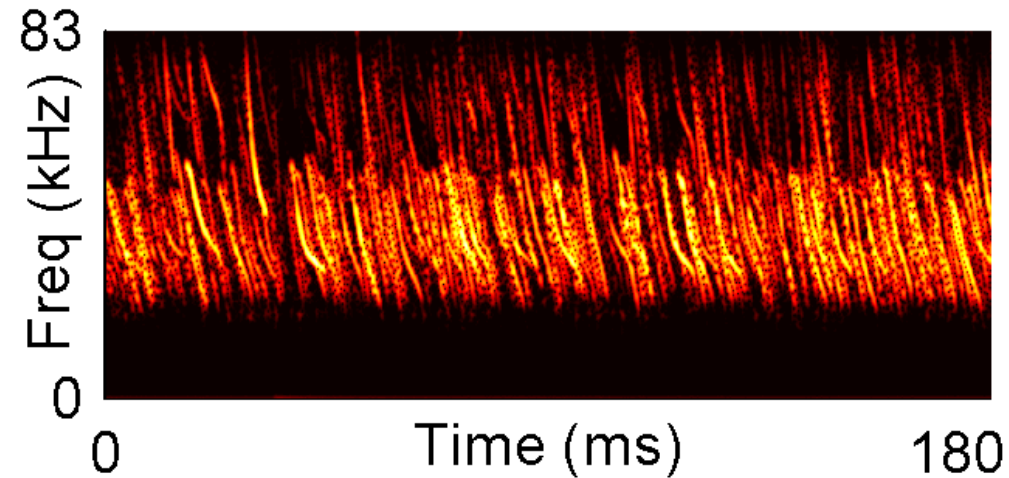


Photo: Merlin Tuttle



Recording: Erin Gillam

$n$  objects  $\times$   $m$  bats =  
 $n \times m$  echoes (thousands)



“Cocktail-party nightmare”

# Collision avoidance – comprehending the incomprehensible

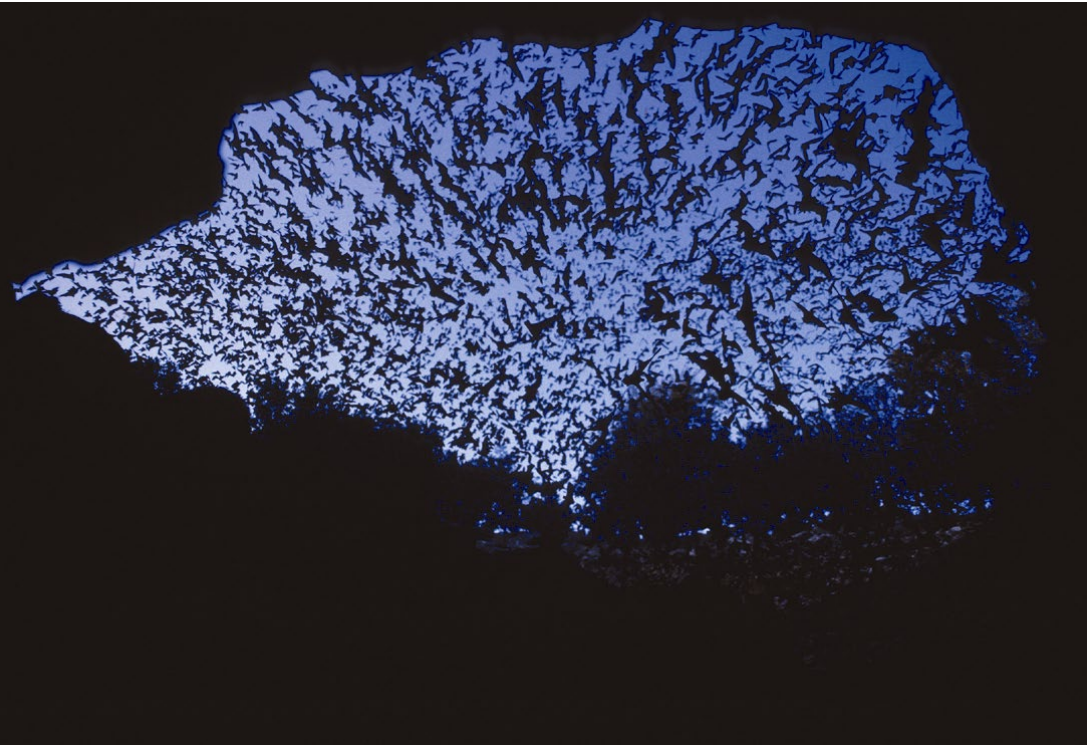


Photo: Merlin Tuttle

## What are the possible solutions?

- Spatial filtering (directional hearing, moving the ears, directional emissions, sequential scanning)
- 'Tag' the timing of the bat's own calls (efference copy, combination-sensitive neurons)
- Personally-unique calls
- Integrate information across calls
- Jamming avoidance response (JAR)
- Use spatial memory – and ignore the calls (happens in some caves)

# Some tradeoffs in biosonar signal design: Revisiting the complexities of choosing the call FREQUENCY

- Call frequency:

Frequency  $\uparrow$  allows detecting smaller insects (min. target size  $\sim$  wavelength).

Frequency  $\downarrow$  allows longer detection range (less atmospheric attenuation).

Frequency  $\downarrow$  allows wider “field of view” (broader spatial emission beam).

Frequency  $\uparrow\downarrow$  allows jamming avoidance response.

Frequency  $\uparrow\downarrow$  allows stabilizing the echo frequency (see below).

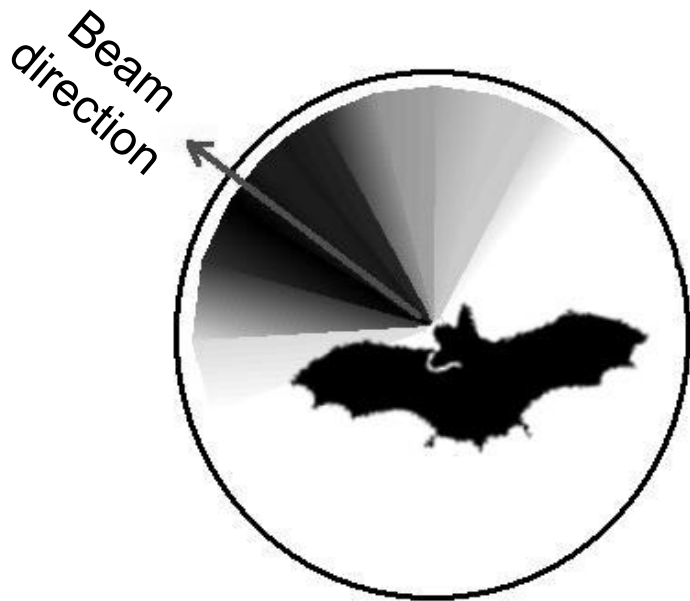
## Conclusions:

- Bats dynamically change the frequency of their echolocation calls, under various situations – but they do it for a number of *different* reasons  $\rightarrow$  A Complex system!
- BUT: Many of these tradeoffs can be quantified, based on the mathematical equations of sonar theory: There is a governing theory that can serve as benchmark.

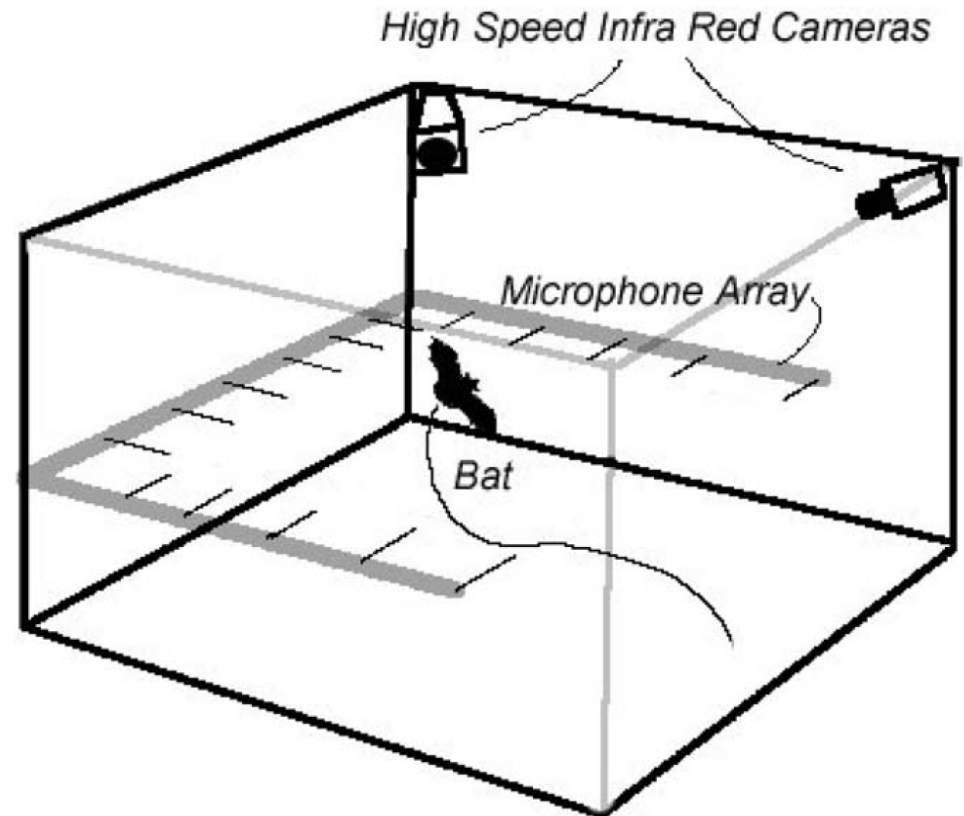
# Emission beams used by bats

Bats emit their beam either through their mouth (e.g. big brown bat) or through their nose (e.g. horseshoe bat).

Arrays of microphones are used to measure the beam shape.

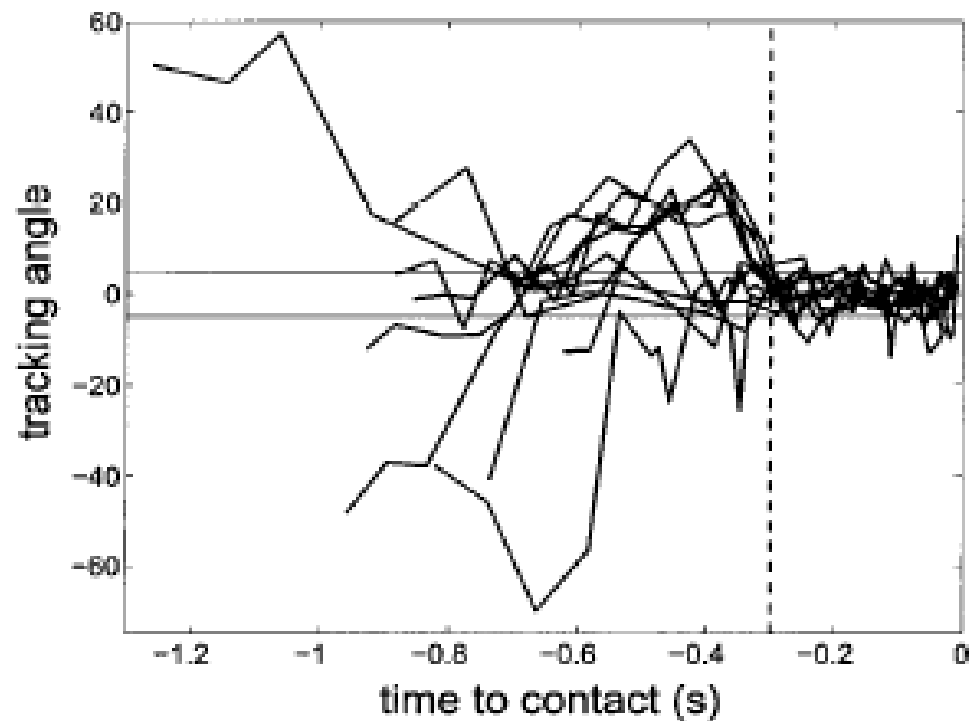


Real beam shape measured  
from a big brown bat



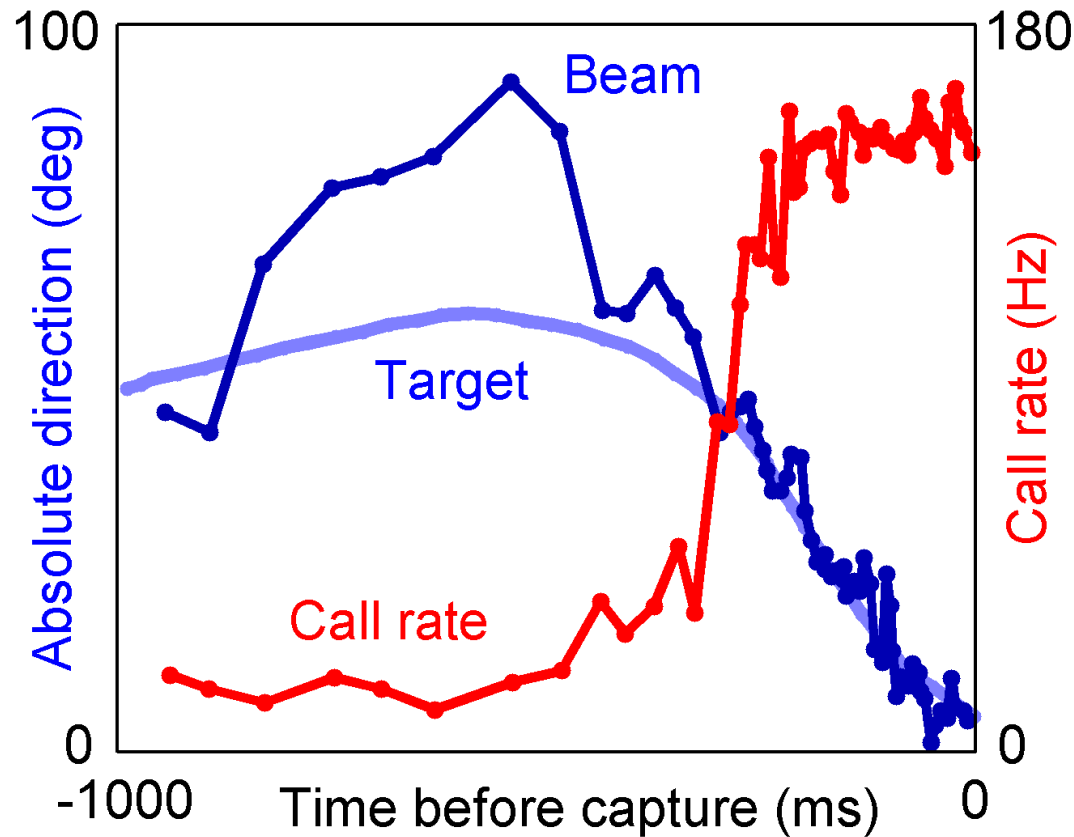
## Emission beams used by bats

When switching from the search phase to the approach phase / tracking phase, the big brown bat 'locks' its beam onto the target direction.



# Emission beams used by bats

The 'locking' of the beam onto the target coincides with the increase in call rate.

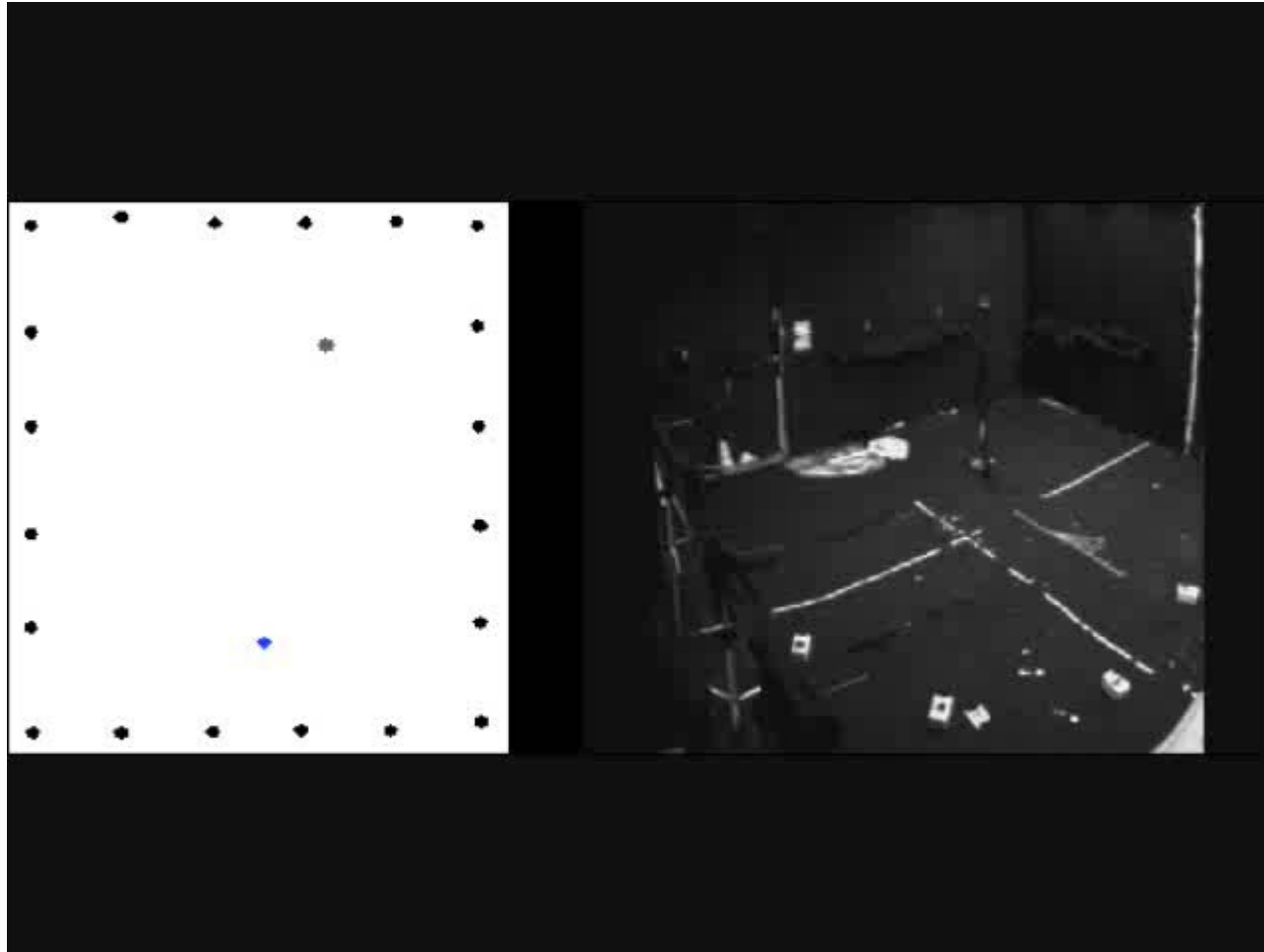


A movie showing the phase transitions in bat sonar when chasing an insect: *Search* → *Approach* → *Tracking (Attack)*



Movie: Bat catching mantis (K. Ghose).

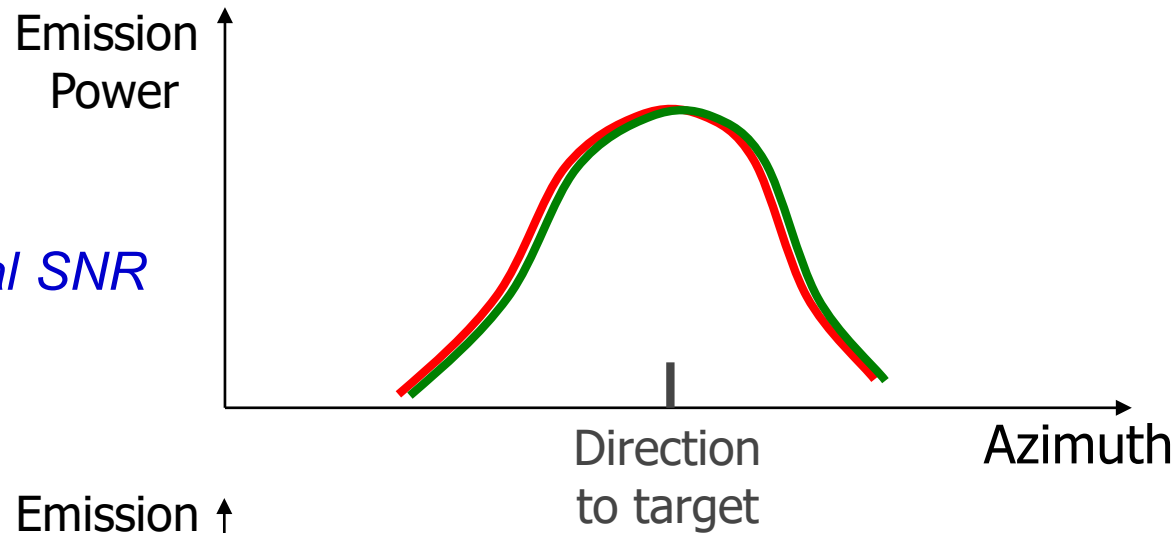
Clicking bats (*Rousettus*) use a different beam-steering strategy: They lock the beam's maximum *slope* on target, which optimizes localization



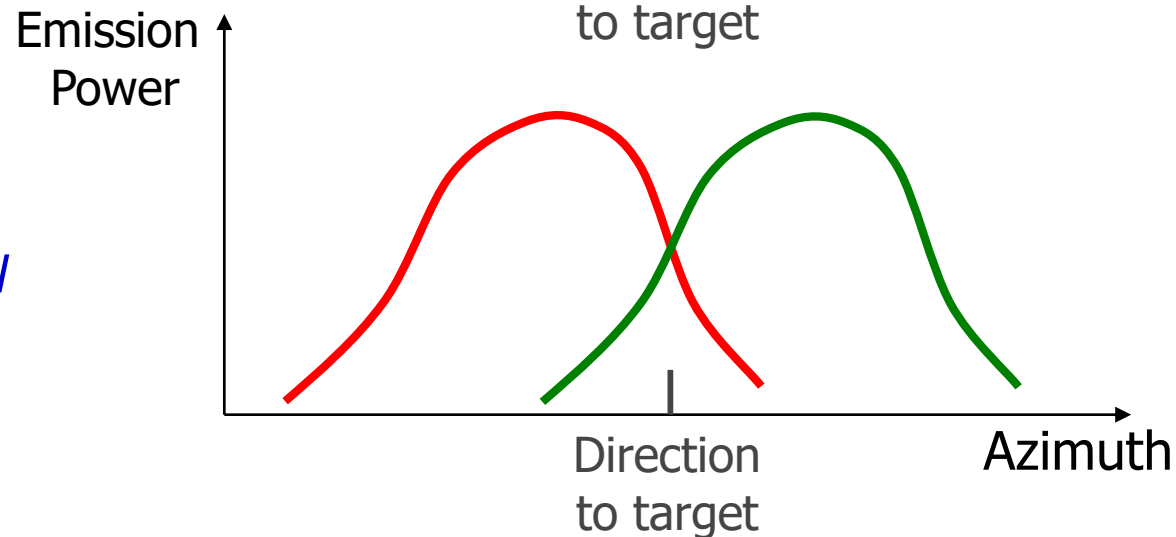
Yovel, Falk, Moss, Ulanovsky,  
*Science* (2010)

Clicking bats (*Rousettus*) use a different beam-steering strategy: They lock the beam's maximum *slope* on target, which optimizes localization

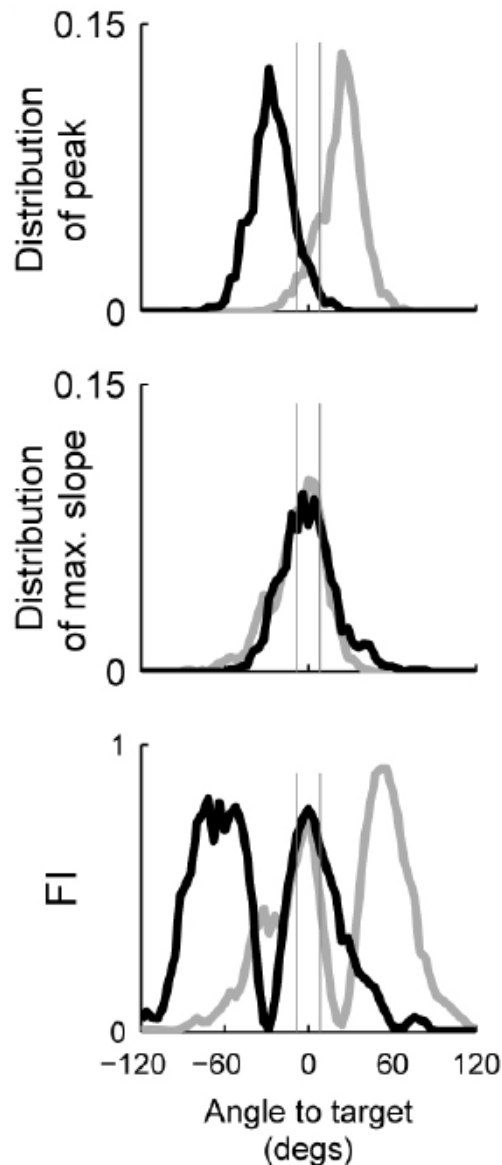
Emission Curves  
If we want *optimal SNR*



Emission Curves  
if we want *optimal localization*



Clicking bats (*Rousettus*) use a different beam-steering strategy: They lock the beam's maximum *slope* on target, which optimizes localization

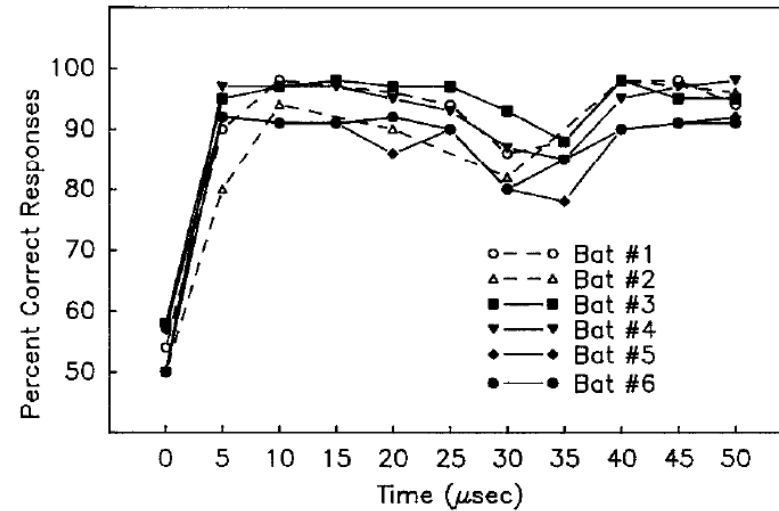
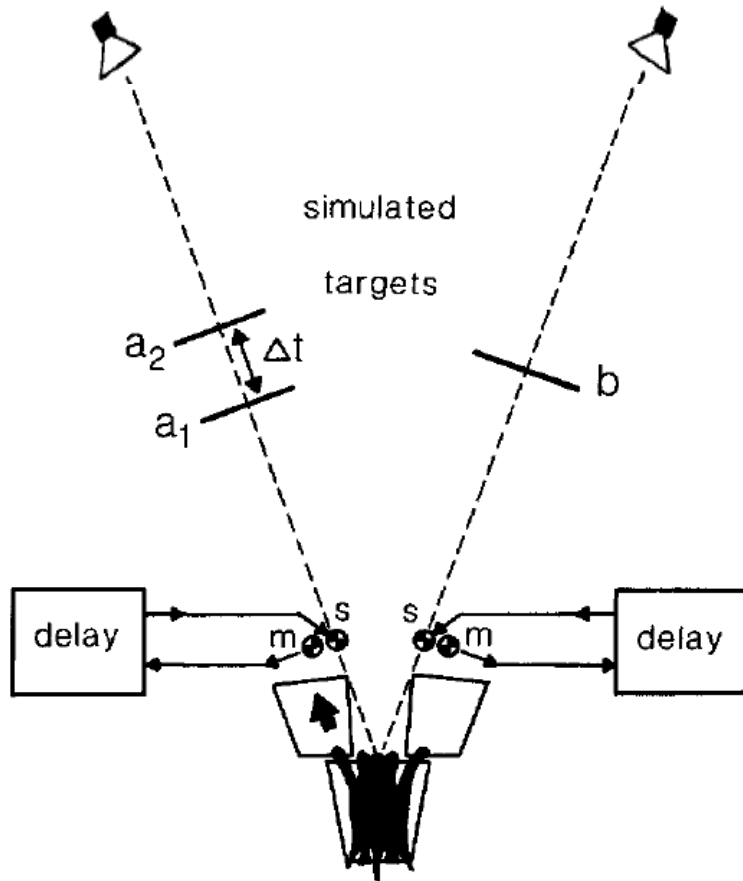


### **Fisher Information (FI):**

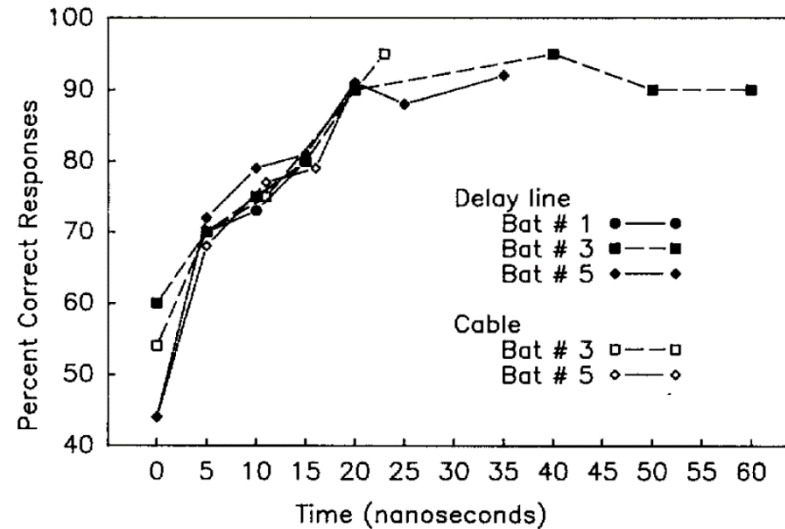
Meets a theoretical optimality criterion:  
best possible target localization based  
on echo intensity

Yovel, Falk, Moss, Ulanovsky,  
*Science* (2011)

# Measuring bat's temporal resolution by the psychophysical technique of two-alternative forced choice (2-AFC)



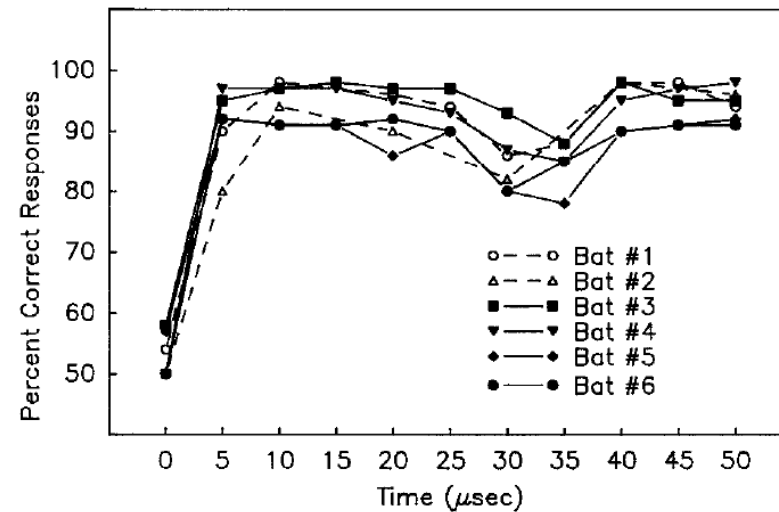
400 ns threshold



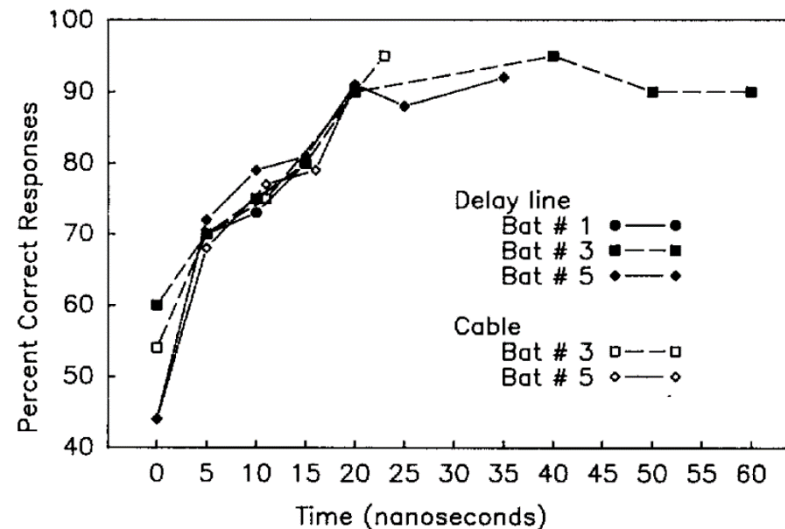
10 ns threshold?!

# Measuring bat's temporal resolution by the psychophysical technique of two-alternative forced choice (2-AFC)

Big brown bats discriminate jitter in target range down to  $\sim 400$  ns (less than 0.1 mm), and possibly even 10 ns. This extraordinary temporal resolution is  $\sim 3$  orders of magnitude below the rise-time of action potentials in the bat's brain (which is  $\sim 400$   $\mu$ s, or so) !



400 ns  
threshold



10 ns  
threshold?!



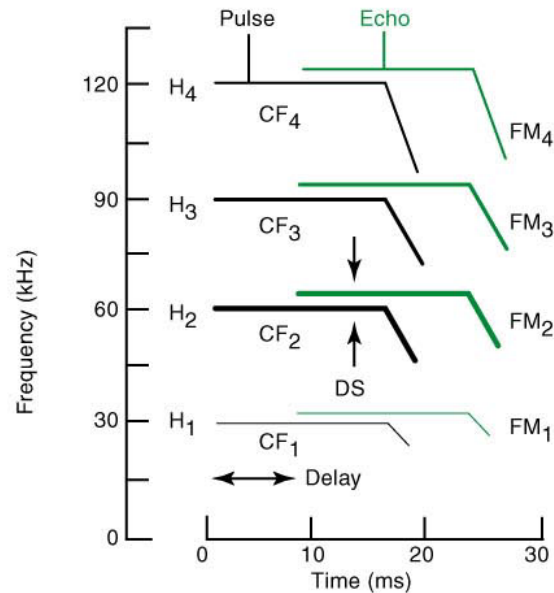
**Jim Simmons:** Pioneer of the two-alternative forced choice (2-AFC) technique for behavioral studies of bats.

# Talk Outline



- Echolocation (biosonar): Behavior and Sensory Ecology
- Neurobiology of Echolocation

# Neural processing of sonar signals in the mustached bat's brain



Schematic of the CF–FM call of the mustached bat.

- The CF-FM call is ideal for overcoming the **Clutter** problems in highly cluttered environments, by doing Doppler processing.

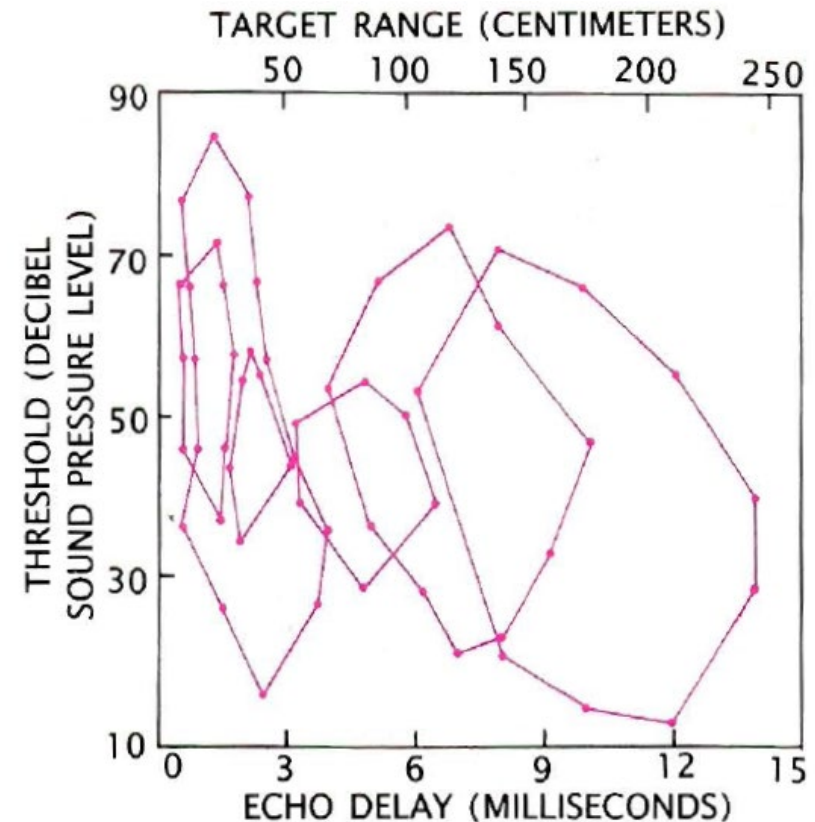
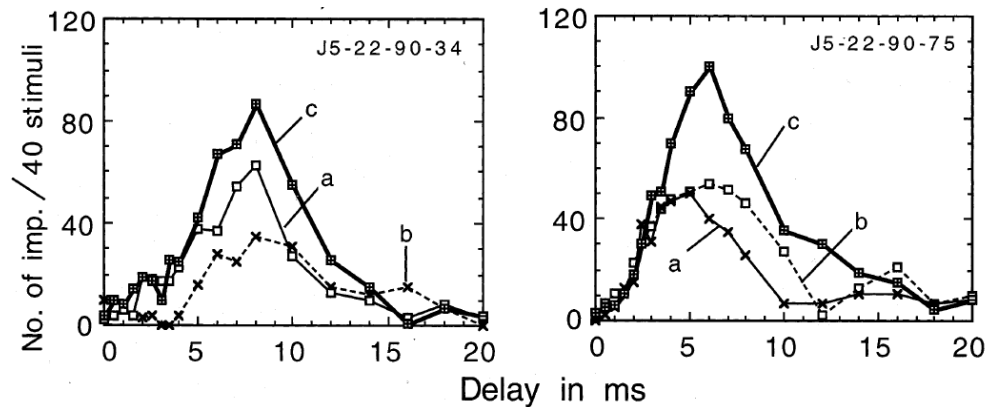


**Nobuo Suga:** Pioneer of bat electrophysiology research. Studied the neural basis of echolocation in the mustached bat.

# Neural processing of sonar signals in the mustached bat's brain

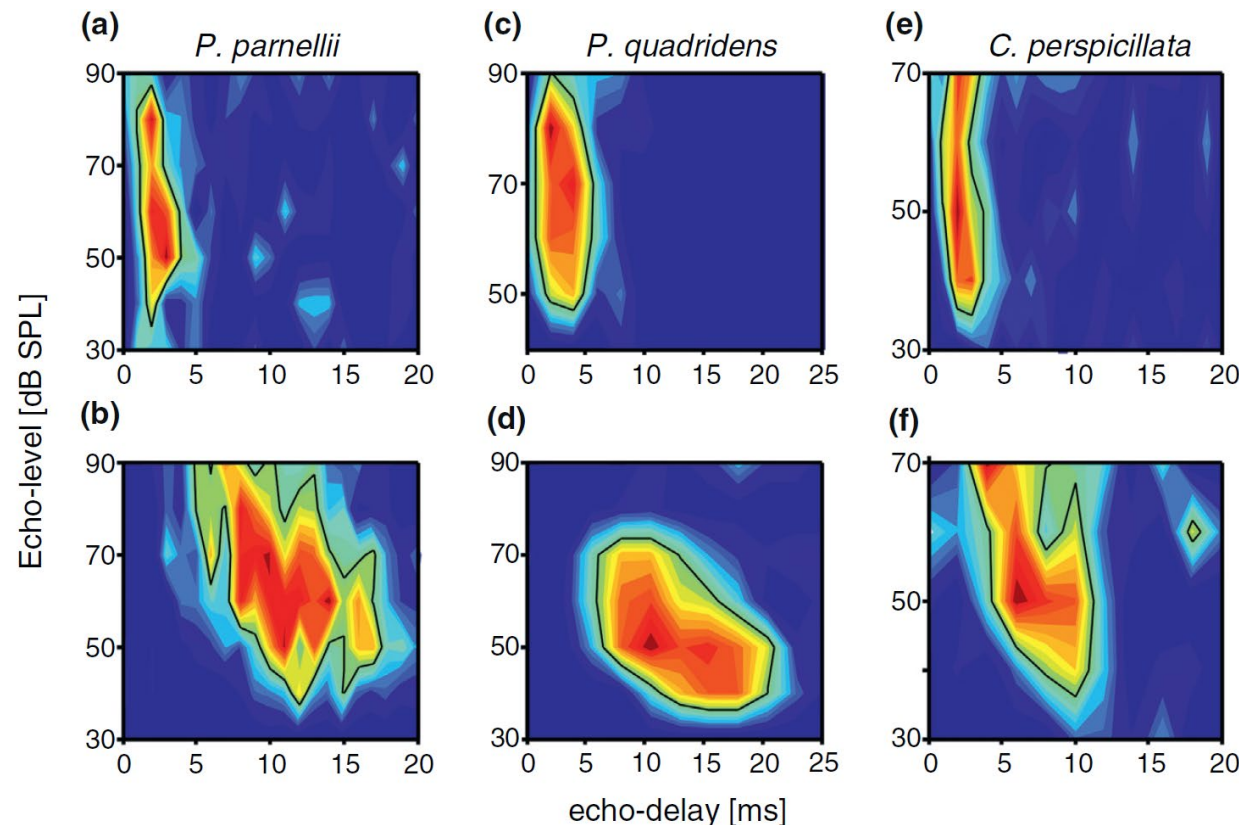
Prominent characteristics of the auditory cortex of this bat:

1. Delay tuned neurons (neurons sensitive to target range) – first discovered by Nobuo Suga



# Neural processing of sonar signals in the mustached bat's brain

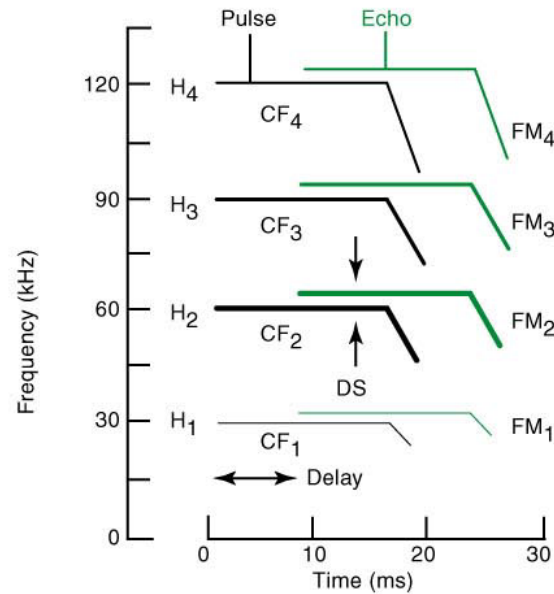
**“Tracking neurons”:** Some delay-tuned neurons have *diagonal* response fields when plotting their response as function of echo-amplitude and pulse-echo delay – matching the increase of echo amplitude as the bat approaches the target. These neurons were termed “tracking neurons”, because they optimally track the target. (*this is relevant for bat species that do NOT reduce their pulse intensity as they approach the target: some species do this [see below], but others do not*)



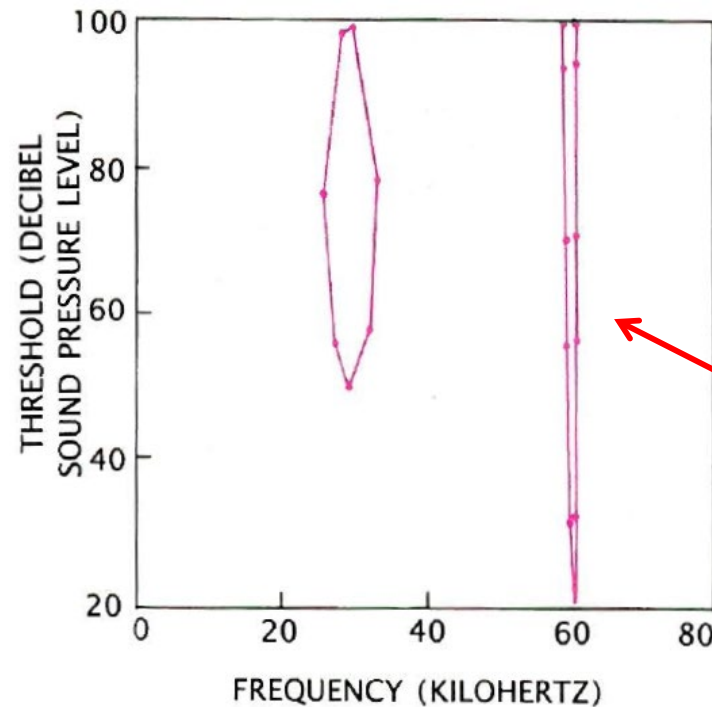
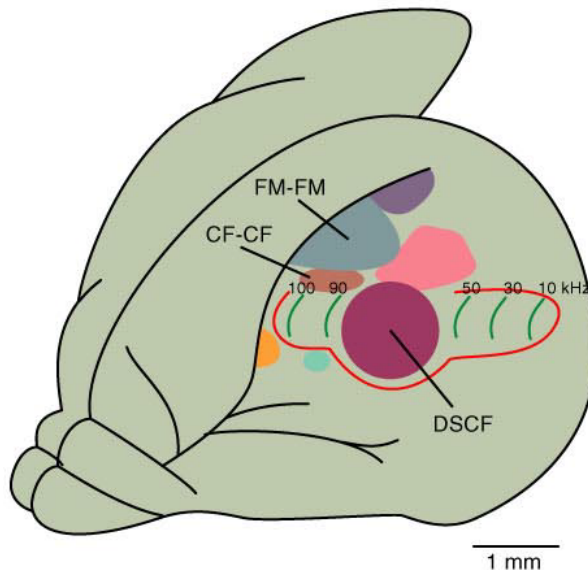
← “Standard” delay-tuned neurons

← “Tracking neurons”  
(a subset of delay-tuned neurons)

# Neural processing of sonar signals in the mustached bat's brain

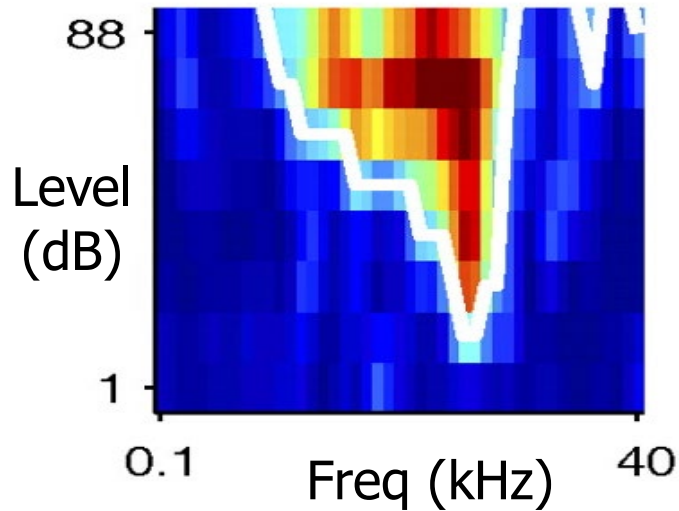


2. 'Auditory fovea' (DSCF area) contains neurons with extremely narrow frequency tuning, centered around the dominant harmonic of the bat call (CF<sub>2</sub>, the 2<sup>nd</sup> harmonic). The narrowest frequency tuning in any animal's cortex.



Frequency tuning of neuron from DSCF area

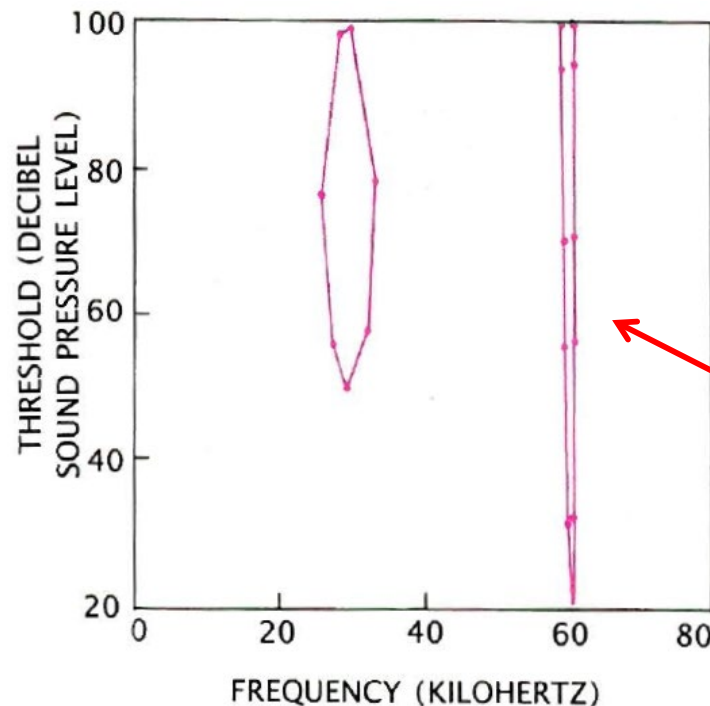
# Neural processing of sonar signals in the mustached bat's brain



Neurons in the auditory cortex of all mammals (in this graph: the cat) serve as *filters*: They pass only signals within the frequency range of their "tuning curve" (white line).

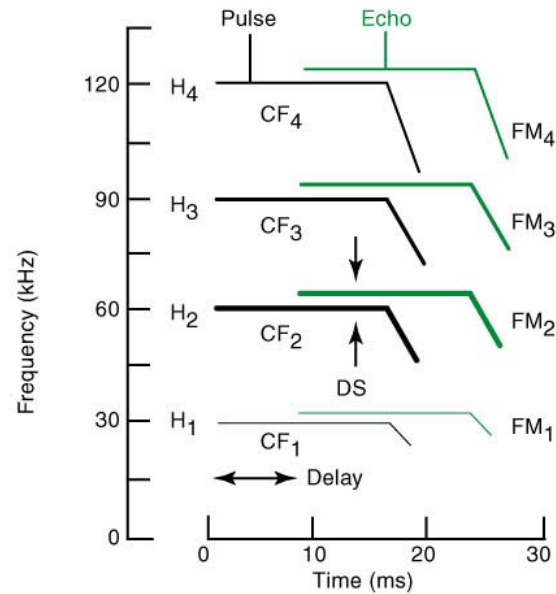
But in the mustached bat (and in the CF-FM horseshoe bats) these filters are particularly sharp.

\* They are also very sharp in humans

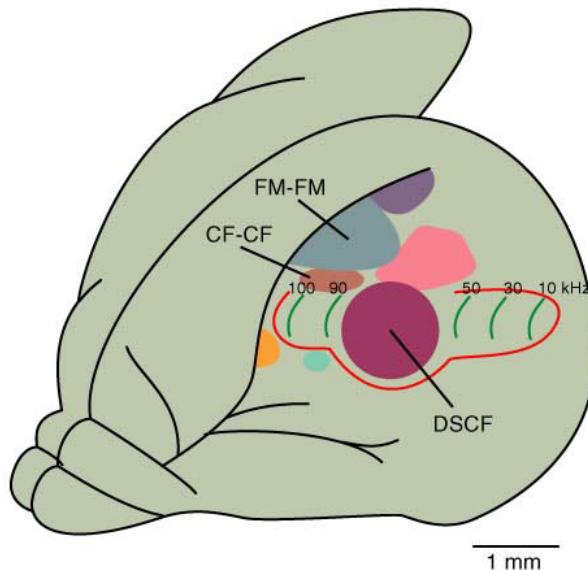


Frequency tuning of neuron from DSCF area

# Neural processing of sonar signals in the mustached bat's brain



Neurons in the DSCF area specialize in detecting rapid Doppler modulations (*insect wing flutter*): Because of their exquisitely sharp frequency tuning, these neurons respond well even to the very small modulations in the CF frequency that are caused by the insect wing flutter (we will see examples below).

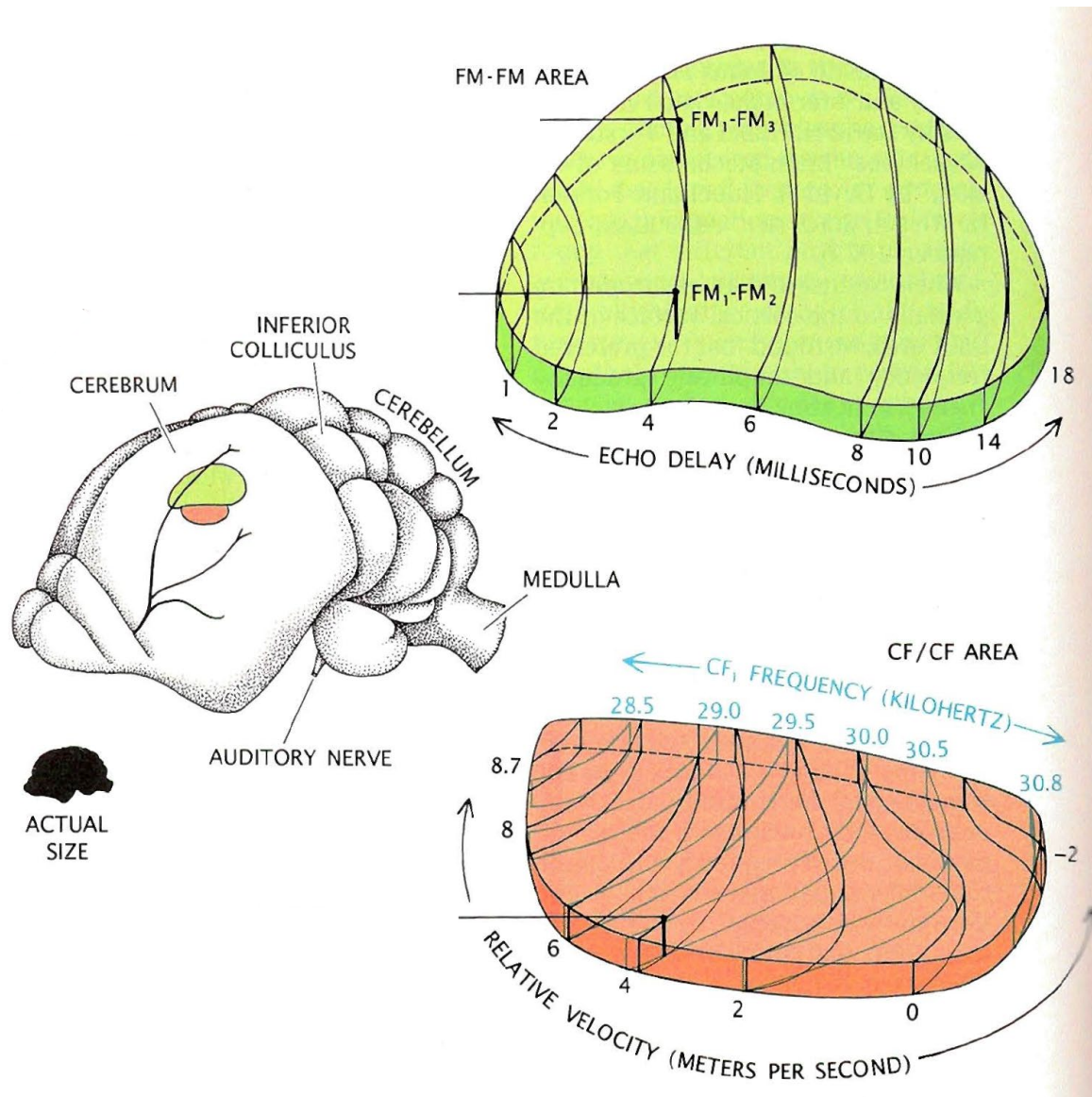


# Neural processing of sonar signals in the mustached bat's brain

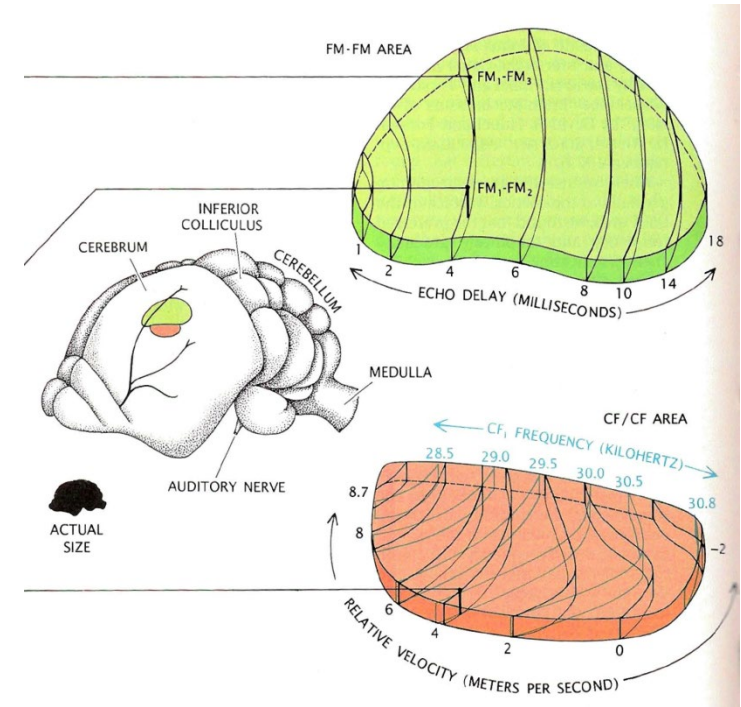
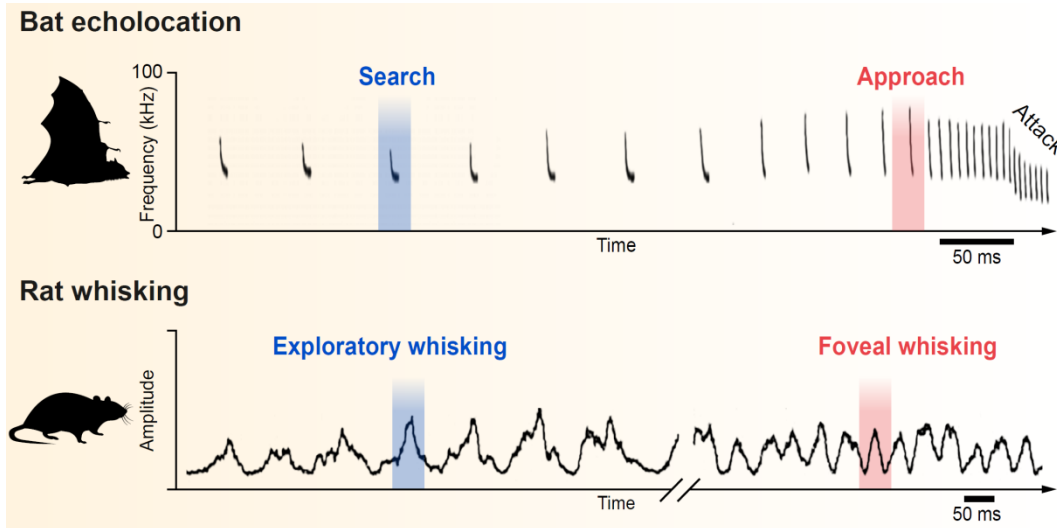
## 3. (A) Modularity of auditory cortical fields, and (B) computational maps:

FM-FM areas: neurons specializing in computing pulse-echo delay (*target range*).

CF-CF areas: neurons specializing in computing Doppler magnitude (*target velocity*).



# Intermezzo: What is a “specialized” or “non-standard” sensory system ?



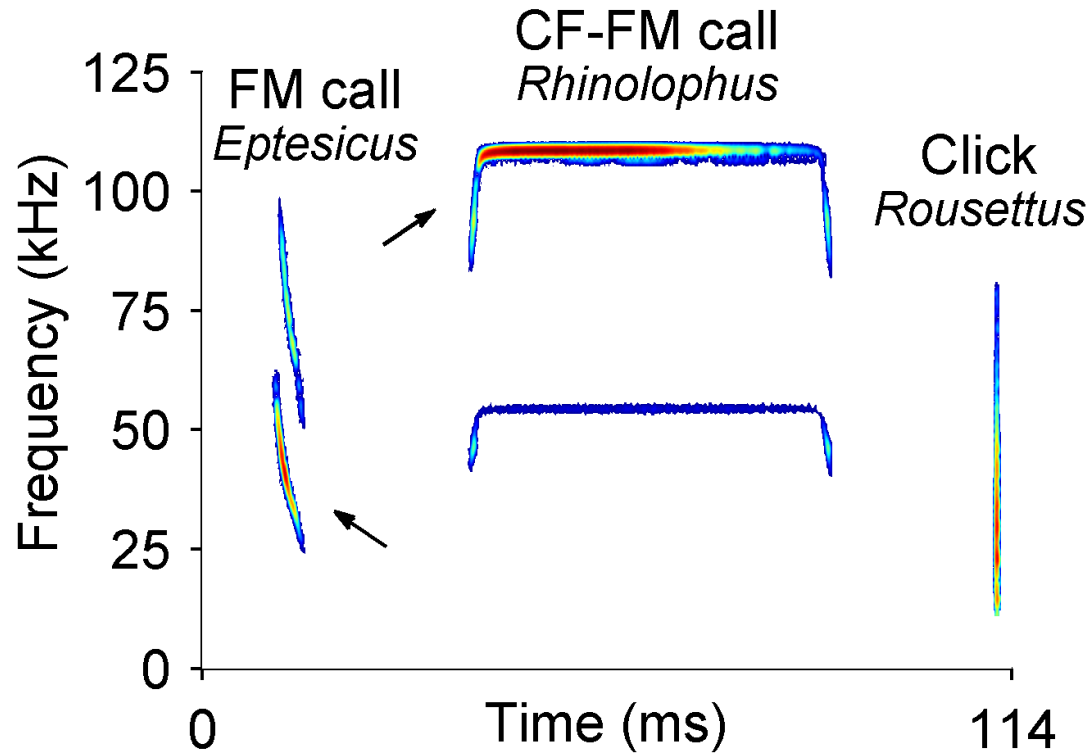
- Echolocation in bats vs. Whisking in rats & mice
- Auditory-cortex in bats vs. Barrel cortex in rats & mice
- What about Vision in primates ?
- What is a “standard” or “typical” sensory system ?

→ Each animal is specialized in its own way.

# *Doppler shift compensation: An example of a motor-sensory loop in bats*

- An interesting and very reproducible motor-sensory behavior that occurs in CF–FM bats.
- In the remaining minutes I will focus on this behavior.
- What I will talk about:
  - CF–FM bats: Behavior
  - CF–FM bats: More on the processing of sensory information in their auditory system
  - What is Doppler shift compensation? And why do bats do it?

# Basic types of echolocation calls - REVISITED



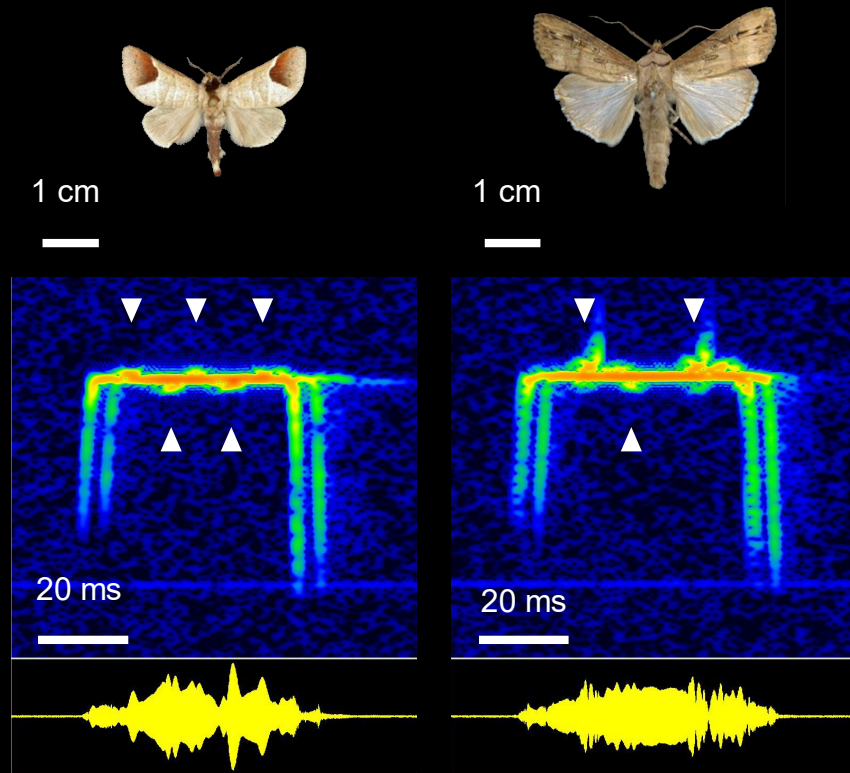
Ulanovsky & Moss,  
*PNAS* 2008

# CF–FM bats: Behavior - REVISITED

- CF-FM bats can compute the Doppler shift (target velocity).
- The CF-FM call is ideal for overcoming the clutter problems in highly cluttered environments, by doing Doppler processing. And indeed, CF-FM bats from the genus *Rhinolophus* (horseshoe bats), *Hipposideros*, and *Pteronotus parnellii* (mustached bat) can hunt insects inside dense vegetation / in cluttered areas.
- They can detect Doppler modulations caused by the insect's wing flutter.
- These bats can even tell apart different insect species based on their different flutter rate → can discriminate  $\Delta$ flutter-rates as small as  $\sim 5\%$ .

# CF-FM bats: Behavior

Natural prey



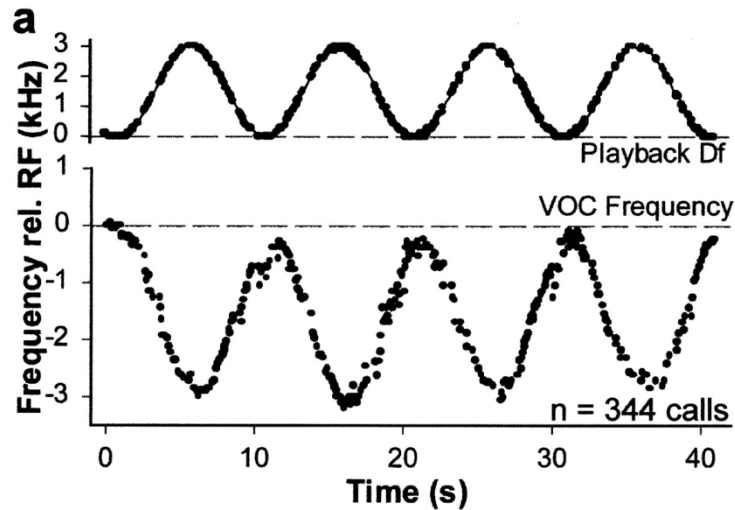
Greater horseshoe bat  
*Rhinolophus ferrumequinum*



→ This is probably the reason why the CF-FM calls are so long = tens of ms (it's easier to identify the insect species if you have at least 2-3 insect-flutter cycles inside the call).

→ Moreover, CF-FM bats increase their pulse duration when exposed to fluttering targets.

# Doppler Shift Compensation (DSC)



Doppler shift compensation in horseshoe bats on a platform – not flying  
(Smotherman et al. 2003)

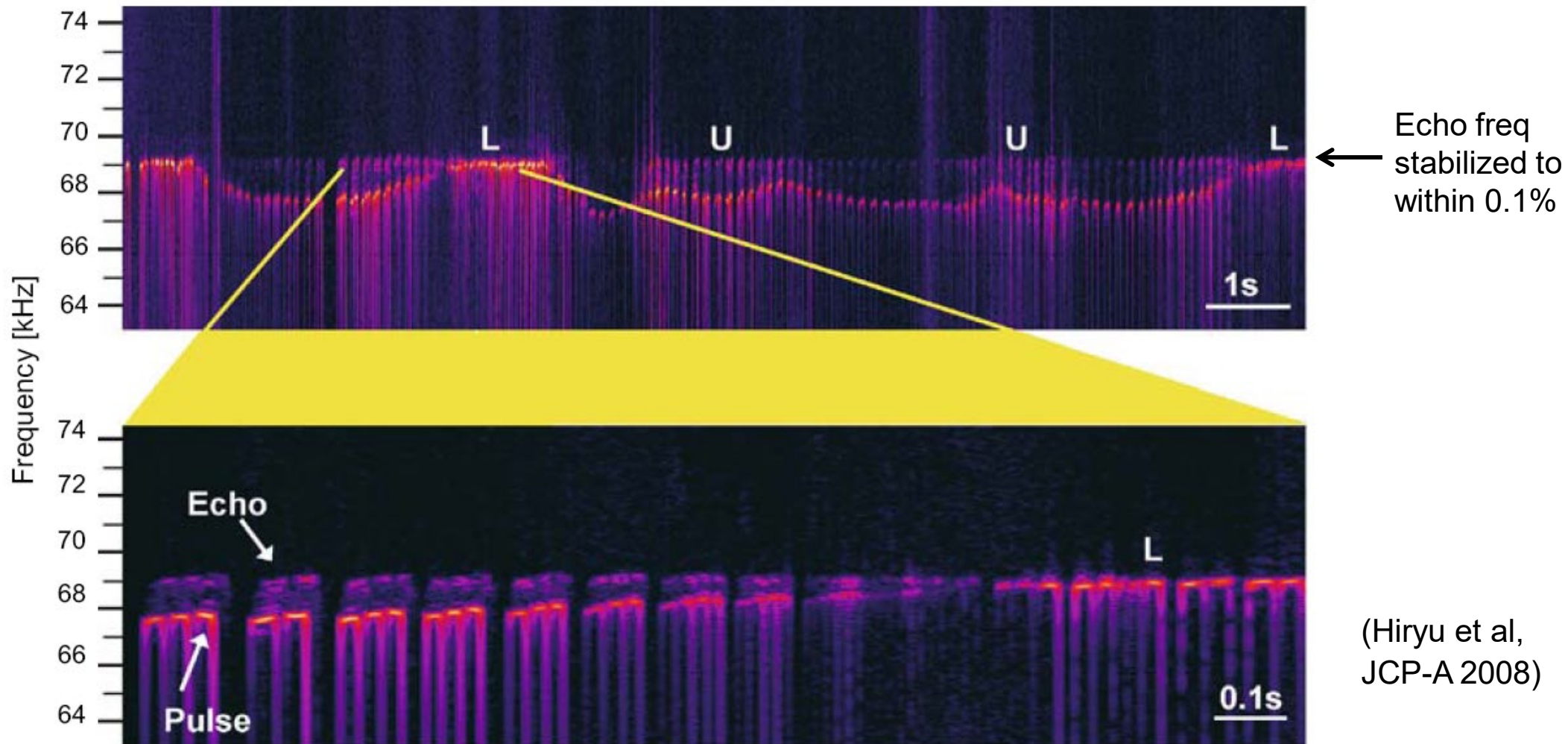
Doppler shift compensation behavior:

Mustached bat, as well as all other CF-FM bats (Horseshoe bats and Hipposiderid bats) shift their frequency so as to keep the frequency of the echo constant.

Why?

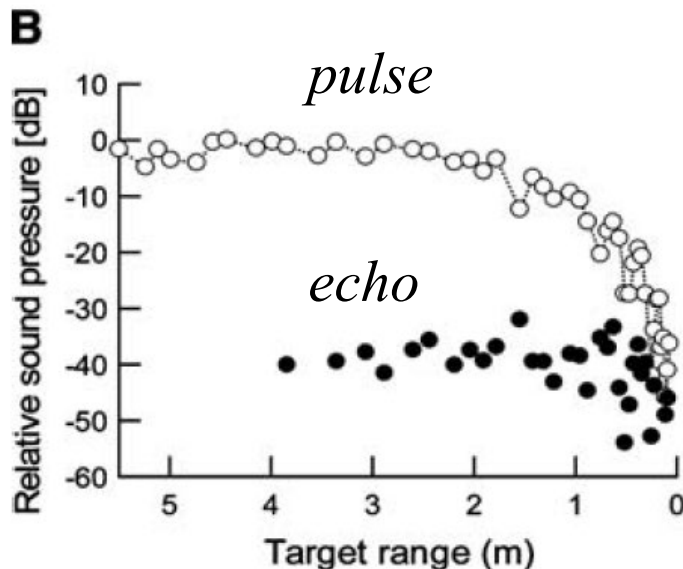
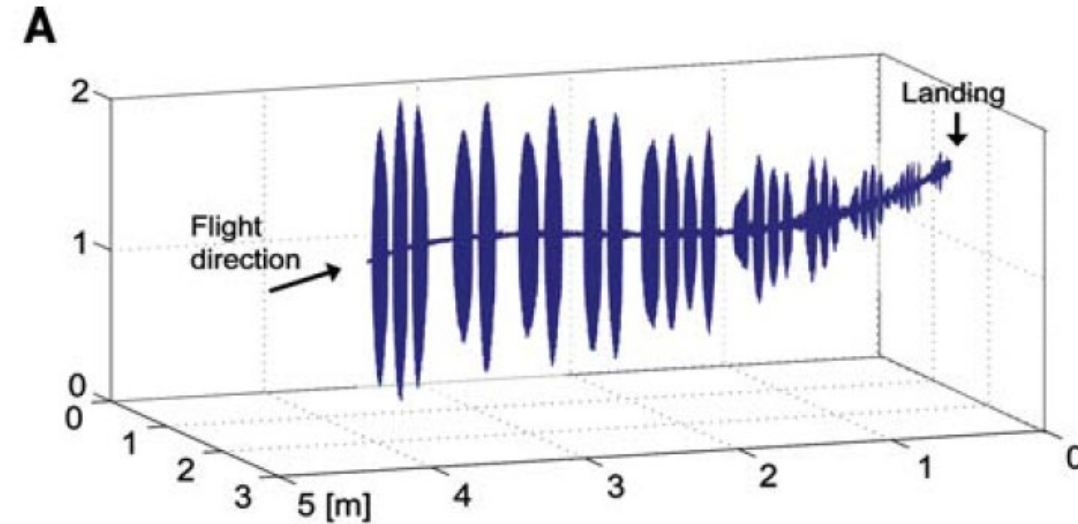
Because they have to keep the echo inside the narrow frequency tuning of their neurons – or else they will not be able to hear & process the echo.

# Stabilization of echo frequency by CF-FM bats in flight – measured by an on-animal telemetry microphone (Telemike)



CF-FM bats exhibit Doppler Shift Compensation that stabilizes the echo frequency.  
The echo frequency is controlled tightly (  $< 0.1\%$  ) and rapidly (  $< 100$  ms ) !

# Stabilization of echo amplitude by CF-FM bats – measured using an on-animal telemetry microphone (Telemike)



(Hiryu et al,  
JCP-A 2008)

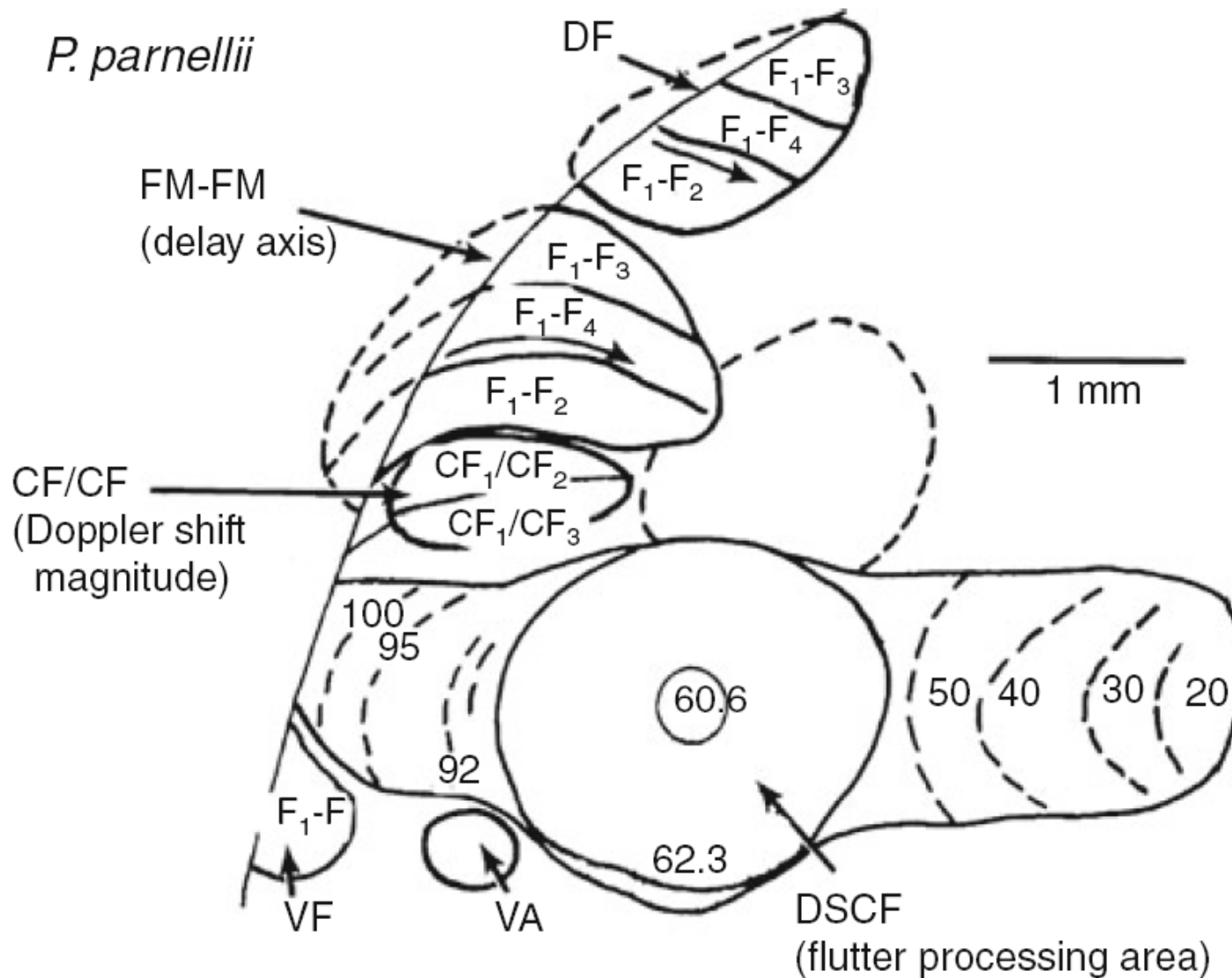
CF-FM bats exhibit reduction in pulse amplitude as they approach a target or a landing wall – which stabilizes the amplitude of the echo (automatic gain control – AGC).

The echo amplitude seems to be tightly controlled in CF-FM bats – and in many other bats where it was tested, including some FM bats and clicking bats !

Why ?

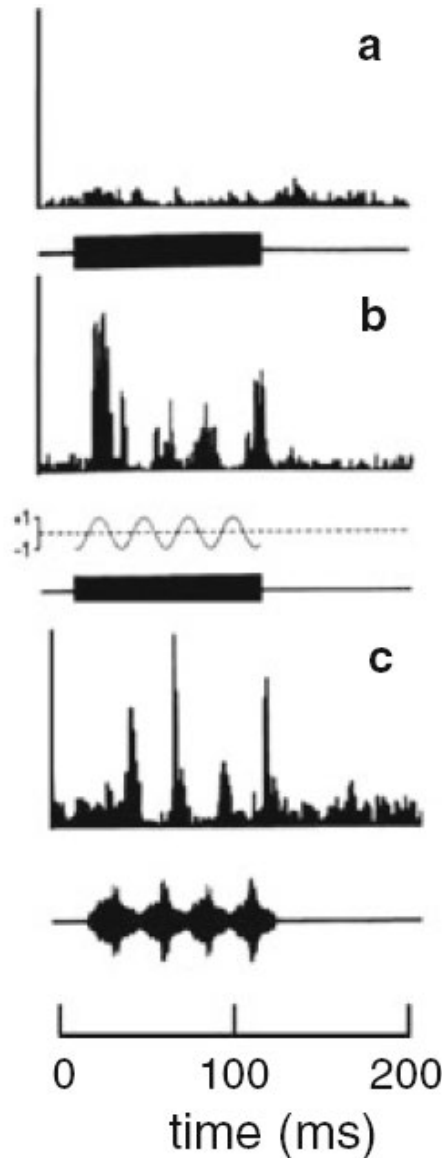
Stabilizes the echo-amplitude within the echo-amplitude-tuning-curve of the neurons in auditory cortex.

# Doppler Shift Compensation (DSC) and auditory fovea



Primary auditory cortex (A1) of the mustached bat, *Pteronotus parnellii*, has an auditory fovea (“DSCF area”) that over-represents the CF frequency emitted by each individual bat.

# Doppler shift compensation allows the sharply-tuned auditory neurons of CF-FM bats to analyze the flutter information



No response to pure tone.

Strong response to frequency-modulated tone (modulation bandwidth  $\pm 1$  kHz).

Strong response to natural recorded flutter of an insect.

A neuron in the auditory cortex of *Rhinolophus ferrumequinum*.

## Summary: Why study bat echolocation

- **A “top-down model” for auditory research:**

Most auditory research (and research on sensory systems in general) is “bottom-up”, where researchers are trying to guess, based on responses to simple stimuli, what the neurons are trying to do. This has led to important insights (e.g. Hubel and Wiesel) but is also very limited due to the multi-dimensionality of the stimulus space, and the nonlinearity of auditory-cortex neurons (you can’t predict neural responses to complex sounds from those to simple sounds).

BY CONTRAST: In bats, where we know sonar theory and (think that) we understand much of what the animal wants to achieve, we can attempt top-down “intelligent guesses” about what the neurons are “trying to do”.

- **A good animal model for active-sensing systems:**

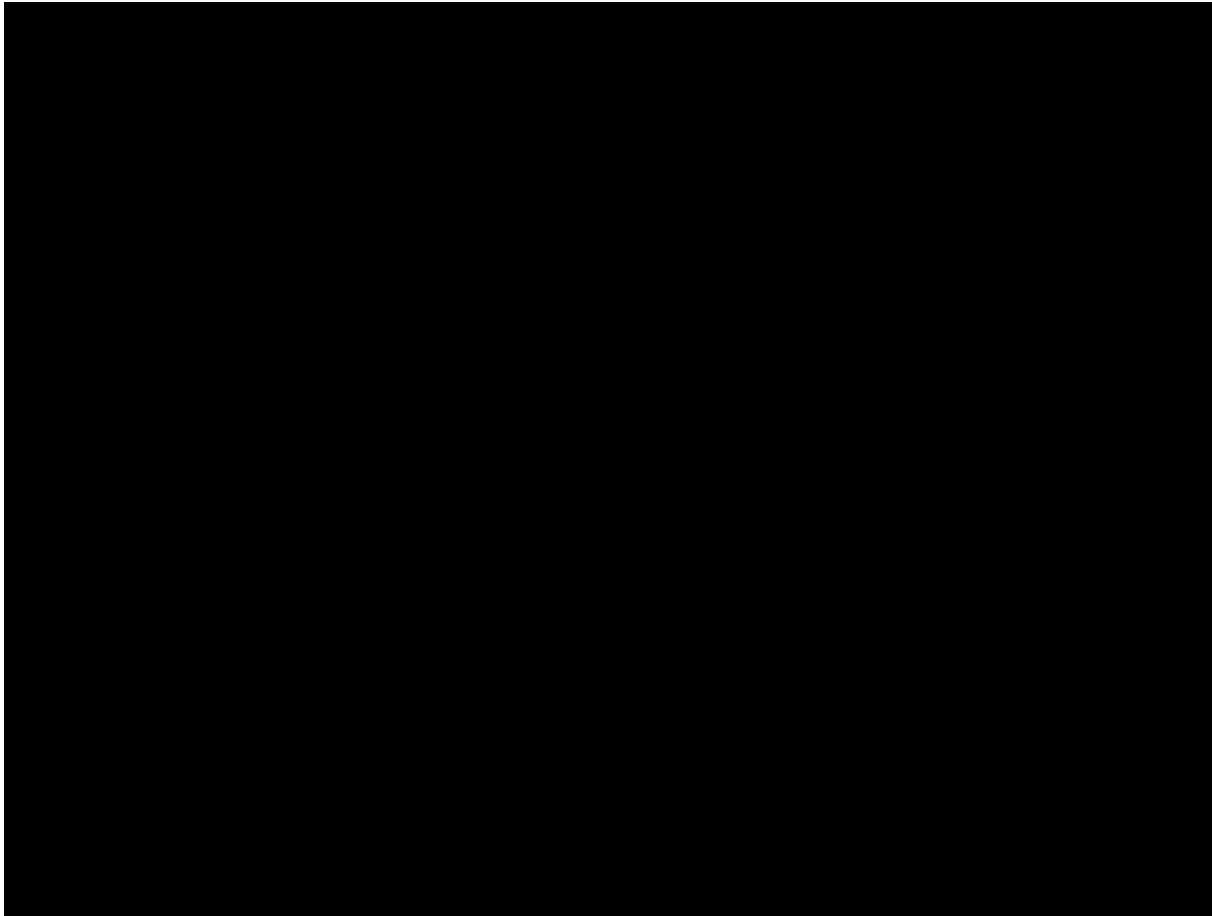
We can measure the sensory behavior in a freely-behaving, freely-moving animal, using microphone arrays (in many ways it is much more difficult to do this in other active-sensing systems, such as rodent whisking or primate vision).

## Summary: Why study bat echolocation

- **The technological reasons:** The performance of bat's airborne Sonar is superior to man-made airborne Radars (or man-made underwater Sonar):
  - Bats can handle much better multi-emitter and multi-target situations compared to radar
  - SNR:  $\sim +9$  dB in man-made sonar,  $-4$  dB in bat sonar. Difference = 13 dB !
  - Dynamic range for echo power: 140 dB : much better than radar
  - Range resolution / pulse compression resolution (for 25 kHz BW)  
 $\sim 400$  ns /  $40$   $\mu$ s =  $10^{-2}$  : much better than radar

## Summary: Why study bat echolocation

- **Lessons for use of echolocation by blind humans?**



Thank you

