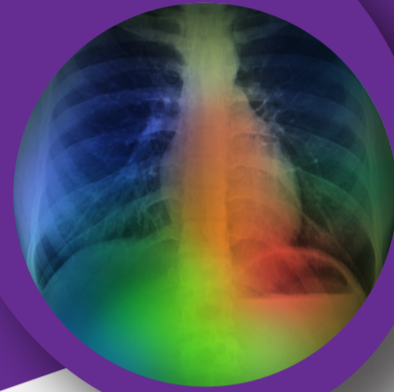
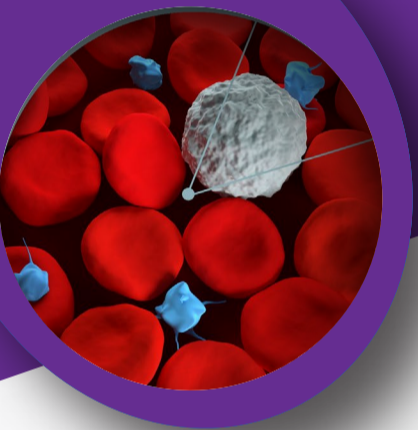




# Focus on CANCER EARLY DETECTION RESEARCH



Monday  
21<sup>st</sup>, November 2022

Wolfson Auditorium  
Weizmann Institute of Science

## PROGRAM

09:00 Opening remarks

---

09:15 **Session 1. Chair: Zvi Livneh**

---

09:15 **David Sidransky**  
Johns Hopkins  
*Recent Advances in Early Cancer Detection*

---

09:50 **Liran Shlush**  
Weizmann Institute of Science  
*The aging of the blood system and early leukemia diagnosis*

---

10:15 **Ravid Straussman**  
Weizmann Institute of Science  
*The tumor microbiome and its potential role in early cancer detection*

---

10:40 ☕ Coffee break

---

11:00 **Session 2. Chair: Moshe Oren**

---

11:00 **Gadi Rennert**  
The Technion School of Medicine and Carmel Medical Center  
*A comprehensive population-based pilot study of precision disease prevention/detection*

---

11:35 **Valery Krizhanovsky**  
Weizmann Institute of Science  
*Senescent cells on the crossroads of cancer and aging*

---

12:00 **Tamar Paz-Elizur**  
Weizmann Institute of Science  
*Utilizing DNA Repair Activity Biomarkers for Lung Cancer Risk Assessment and Early Detection*

12:25 **Ruth Scherz-Shouval**  
Weizmann Institute of Science  
*Stress and mutation dependencies in the tumor microenvironment*

---

12:50 🍴 Lunch

---

13:50 **Session 3. Chair: Michal Neeman**

---

13:50 **Dorith Shaham**  
Hadassah-Hebrew University Medical Center  
*Implementing a national lung cancer screening pilot in Israel: The TIGAR project*

---

14:25 **Yonina Eldar**  
Weizmann Institute of Science  
*Model Based Deep Learning for Early Cancer Detection*

---

14:50 **Efrat Shema**  
Weizmann Institute of Science  
*Single-molecule liquid biopsy technology for cancer diagnosis*

---

15:15 **Nitzan Rosenfeld**  
Cambridge University  
*Pushing the boundary to expand diagnostic applications of circulating DNA*

---

15:50 Concluding remarks

Registration



[bit.ly/3QqXn7x](https://bit.ly/3QqXn7x)

Organizer

Zvi Livneh  
Weizmann Institute of Science  
[zvi.livneh@weizmann.ac.il](mailto:zvi.livneh@weizmann.ac.il)

Sponsors

The Swiss Society Institute for  
Cancer Prevention Research



**Moross**  
Integrated  
Cancer Center (MICC)

Conference Coordinator  
& Accessibility Issues

Talia Suissa  
[talia.suissa@weizmann.ac.il](mailto:talia.suissa@weizmann.ac.il)