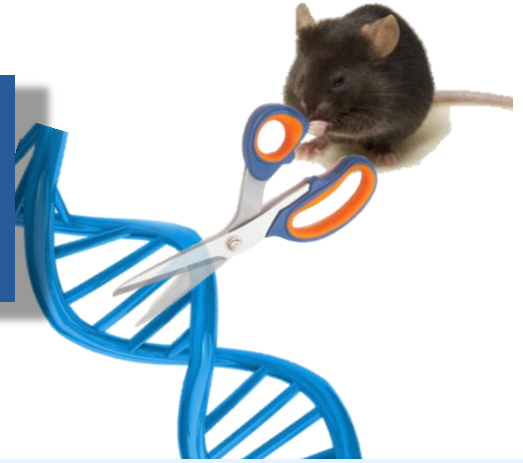


WIS CRISPR WORKSHOP

Monday, February 16, 2015
Ebner Auditorium



PROGRAM

8:45	COFFEE	
9:00	Ralf Kuehn MDC Berlin	Direct Production Of Mouse Mutants Using Zfns, Talens Or Crispr/Cas In One-cell Embryos
9:35	Orly Reiner WIS	Use Of CRISPR/Cas9 Gene Targetting Technology To Model Neurodevelopment
9:50	Ditsa Levanon WIS	Runx3 In Neurogenesis: How The Regulator Is Regulated?
10:05	Tal Ilani WIS	Double Blow To Late Secretory Disulfide Bonding: A CRISPR KO Mouse Lacking Both Qsoxs
10:20	Ari Elson WIS	Using CRISPR To Study Cell Signaling In Chronic Lymphocytic Leukemia
10:35	Rebecca Haffner WIS	CRISPR Targeting In Mice; State Of The Art at the WIS
10:55	COFFEE	
11:10	Patrick Hsu Broad Institute, MIT	Targeting specificity of Cas9 cleavage and binding
11:40	Hely Oren-Jazan Rhenium	qPCR Detection Of CRISPR – HRM Analysis
11:55	Rotem Sorek WIS	Preference For Foreign DNA In CRISPR Spacer Acquisition
12:25	Moshe Grunspan WIS	Lipoprotein Regulation Of Angiogenesis
12:40	Shifra Ben-Dor WIS	CRISPR Design Considerations
13:00	LUNCH	
14:00	Ralf Kuehn MDC Berlin	CRISPR/Cas In Mice, How To Improve It Further
14:45	Sergey Viukov WIS	CRISPR And TALENS In Human ES Cells
15:00	Lee Roth WIS	Conditional Knock-out Of Ladinin-1, An Actin Regulator
15:15	COFFEE	
15:45	Patrick Hsu Broad Institute, MIT	CRISPR design, viral delivery, and NGS readout
16:30	Discussion and concluding remarks	

Organizers

Rebecca Haffner , Steffen Jung, Gideon Schreiber

Contact rebecca.haffner@weizmann.ac.il

Sponsors

Departments of Veterinary Resources, Immunology, Faculty of Biochemistry, Faculty of Biology, The David and Fela Shapell Family Center for Genetic Disorders Research, I-CORE on Integrated Structural Cellular Biology, Bioinformatics Unit- Biological Services, Rhenium, Israel, Sigma-Aldrich

Registration at

https://erez.weizmann.ac.il/pls/htmlldb/f?p=101:login::NO::P101_PKNS_CODE:248



SIGMA-ALDRICH

