

## Toll-like receptors and their ligands control mesenchymal stem cell functions

Meirav Pevsner-Fischer<sup>\*^</sup>, Vered Morad<sup>\*</sup>, Michal Cohen-Sfady<sup>^</sup>, Liat Rousso-Noori<sup>\*</sup>, Alexandra Zanin-Zhorov<sup>^</sup>, Shmuel Cohen<sup>^</sup>, Irun R. Cohen<sup>^</sup>, Dov Zipori<sup>\*</sup>  
Departments of Molecular Cell Biology<sup>\*</sup> and Immunology<sup>^</sup>, the Weizmann Institute of Science, Rehovot 76100, Israel

Author contribution: The experiments reported herein were designed and executed by Meirav Pevsner-Fischer following an initial proposal of Michal Cohen-Sfady that TLRs may be significant in stem cell biology. Liat Rousso-Noori derived the MSC used in this study, and Vered Morad designed the conditions for MSC differentiation, Alexandra Zanin-Zhorov set the conditions for the NF- $\kappa$ B assay. Shmuel Cohen generated the T-cell line used for the immunosuppression assay. Irun R. Cohen and Dov Zipori are heads of two independent research groups and directed this collaborative study.

Running head: TLR regulate MSC differentiation

Research grants and financial support: This work was supported by the 6<sup>th</sup> platform of the European Union and the Center for the Study of Emerging Diseases (to IRC) and by The Charles and David Wolfson Charitable Trust and Ruth Zeigler Trust grants for Stem Cell Research at the Weizmann Institute of Science and by the Gabrielle Rich Center for Transplantation Biology (to DZ).

Key words: mesenchymal stem cells (MSC), toll-like receptors (TLR), nuclear factor- $\kappa$  B (NF- $\kappa$ B), myeloid differentiation factor 88 (MyD88), interleukin-6 (IL-6), alkaline phosphatase (ALP).

Scientific head: Hemopoiesis

Acknowledgment: We thank Prof. Shizuo Akira (Osaka University, Osaka, Japan) for kindly providing MyD88-deficient mice. We thank Dr Ron Apte (Ben Gurion University of the Negev, Beer Sheva, Israel) for providing us the IL-1 $\beta$  ELISA results. We thank Dr. Tamara Berkutzki from the Department of Veterinary Resources of the Weizmann Institute for excellent assistance in the preparation of histological sections.

Address for Correspondence:  
Dov Zipori, Ph.D.  
Department of Molecular Cell Biology,  
Weizmann Institute of Science,  
Rehovot 76100, Israel  
Tel: 972-8-9342484  
Fax: 972-8-9344125

## Abstract

Mesenchymal stem cells (MSC) are widespread in adult organisms and may be involved in tissue maintenance and repair, as well as in the regulation of hemopoiesis and immunological responses. Thus, it is important to discover the factors controlling MSC renewal and differentiation. Here we report that adult MSC express functional Toll-like receptors (TLR), confirmed by the responses of MSC to TLR ligands. Pam3Cys, a prototypic TLR-2 ligand, augmented interleukin-6 secretion by MSC, induced nuclear factor  $\kappa$  B (NF- $\kappa$ B) translocation, reduced MSC basal motility and increased MSC proliferation. The hallmark of MSC function is their capacity to differentiate into several mesodermal lineages. We show herein that Pam3Cys inhibited MSC differentiation into osteogenic, adipogenic and chondrogenic cells while sparing their immunosuppressive effect. Our study therefore shows that a TLR ligand can antagonize MSC differentiation triggered by exogenous mediators and consequently maintains the cells in an undifferentiated and proliferating state *in vitro*. Moreover, MSC derived from myeloid factor 88 (MyD88) deficient mice lacked the capacity to differentiate effectively into osteogenic and chondrogenic cells. It appears that TLR and their ligands can serve as regulators of MSC proliferation and differentiation and might affect the maintenance of MSC multipotency.

## Introduction

Mesenchymal stem cells (MSC) comprise an adult population that resides in many organs and exhibits multiple functions and phenotypes upon *in vitro* culture; MSC can be induced to differentiate into mesodermal cell lineages<sup>1,2</sup>, support and regulate hematopoiesis<sup>3-7</sup>, regulate immune responses<sup>8-12</sup> and may participate in the repair of tissue damage inflicted by normal wear and tear, injury, or disease<sup>13-16</sup>. MSC comprise 0.01-0.001% of the bone marrow (BM) nucleated cells and are obtained by expansion of the bone-marrow, plastic-adherent cell fraction<sup>1,17-21</sup>. Under certain physiological or experimental conditions, MSC can be induced to differentiate *in vitro* into cells of the mesodermal lineage, specifically to osteocytes, adipocytes, chondrocytes, myocytes, tenocytes, myocadicytes and hematopoietic supportive stroma<sup>1,17,19,22</sup>. MSC are an attractive cell-based therapy tool for developmental defects, degenerating diseases and bone, cartilage, muscle and other mesodermal tissues injuries<sup>23-30</sup>.

Toll-like receptors (TLR) are a class of molecules first discovered to play a role in body development<sup>31</sup> and later in body maintenance<sup>32-36</sup>. The TLR family has been shown to be of importance in the innate immune system for the recognition of pathogen-associated molecular patterns (PAMPs) by immune cells, initiating a primary response toward invading pathogens and recruitment of the adaptive immune response<sup>32,37-49</sup>. TLRs can be activated not only by pathogen components, but also by mammalian endogenous molecules such as heat-shock proteins and extra cellular matrix breakdown products<sup>50-52</sup>.

In the steady state, during the generation of immune cells, as well as under pathological conditions, there are intimate interactions between lymphocyte populations and the organ stroma mesenchyme. These interactions regulate cell growth, differentiation and control cell functions. It is possible therefore that lymphocytes and the stromal mesenchyme share regulatory mechanisms. To test this possibility we aimed, in the present study, to examine the expression and possible regulatory functions of TLR in mesenchymal cells.

We explored the expression of TLR by MSC, the response of MSC to known TLR activators and the ability of a TLR-2 ligand to regulate MSC proliferation and differentiation. We show here that cultured MSC express TLR molecules 1 to 8, but not TLR-9. Activation of MSC by TLR ligands induced IL-6 secretion and NF- $\kappa$ B nuclear translocation. Pam3Cys, a prototypic ligand for TLR-2, induced proliferation of MSC and regulated their differentiation. Relatively little is known about the signals that regulate MSC proliferation, differentiation and development<sup>53,54</sup>. Our findings suggest that TLR signaling may play a role in restraining MSC differentiation and thus promoting MSC renewal.

## Materials and methods

### Mice

C57BL/6J were purchased from Harlan Olac. MyD88-knockout mice were provided by Prof. S. Akira (Osaka University, Osaka, Japan)<sup>48</sup>.

### Cell culture

MSC were grown in murine MesenCult™ Basal Media supplemented with 20% murine mesenchymal supplement (StemCell Technologies Va, CA), 60µg/ml penicillin and 100µg/ml streptomycin. MSC from passage 12 to passage 16 were used in all experiments described.

### Reagents

Human heat shock protein 60 (HSP60) was prepared as described<sup>55</sup>. Endotoxin contamination of the preparations was determined using the kinetic-turbidimetric LAL test, performed by Biological Industries, (Beit Haemek, Israel). The endotoxin content was <0.0001 EU/µg protein, corresponding to less than 0.01 pg lipo polysaccharide (LPS) equivalents per µg recombinant HSP60. *Escherichia coli* O55:B5 LPS, Peptidoglycan of *Staphylococcus aureus* and Polyinosinic-Polycytidylic acid were purchased from Sigma (Rehovot, Israel). Pam3Cys was purchased from EMC microcollections (Tübingen, Germany). *Salmonella muenchen* Flagellin was purchased from Calbiochem (Darmstadt, Germany). CpG and GpC – the phosphorothioate oligonucleotides were synthesized at the Oligonucleotide Synthesis Unit of the Weizmann Institute of Science (Rehovot, Israel). The oligonucleotide CpG contains two 9-mer segments. The control oligonucleotide GpC displays the same nucleotides with an inverted motif: Oligonucleotide CpG, 59-TCCATAACGTTGCAAACGTTCTG-39; and oligonucleotide GpC, 59-TCCATAAGCTTGCAAAGCTTCTG-39.

Imiquimod (R837) and ssRNA40 were purchased from InvivoGen (San Diego, CA). MOG p35-55 peptide sequence: MEVGWYRSPFSROVHLYRNGK

The peptide used was synthesized using the F-MOC technique with an automatic multiple peptide synthesizer (AMS 422, ABIMED, Langenfeld, Germany). The purity of the peptides was analyzed by HPLC. Antibodies: polyclonal rabbit anti-ERK 1/2 was purchased from Sigma (Rehovot Israel), polyclonal rabbit anti-NF-κB p65 was obtained from eBioscience (San Diego, CA) and monoclonal mouse anti-nucleolin was obtained from MBL (Nagoya, Japan).

### BM cell extraction and MSC production

BM cells were obtained from 7-8 week old C57BL/6 mice, re-suspended in PBS and red blood cells lysis buffer (Sigma, Israel) and after 5 min incubation, subjected to an additional centrifugation. The cells were then seeded in 60 mm plates containing MSC medium. Half of the medium was replaced every 3 days and once a confluent layer was formed, the cells were removed using Trypsin (0.05% EDTA, 0.25% trypsin, Biological Industries LTD, Beit Haemek, Israel) and reseeded.

### **Cell sorting**

Primary BM cells were incubated with antibodies specific to CD45.2 R-phycoerythrin (RPE) (Southern Biotechnology Associates, Birmingham, AL) and CD11b/ Mac1 fluorescein isothiocyanate (FITC) (Southern Biotechnology Associates, Birmingham, AL), for 1 hour and were then washed and suspended in PBS with 1% FCS. The cells were sorted using FACSVANTAGE cell sorter (FACSVANTAGE SE, Becton Dickinson Immunocytometry System, San Jose CA). The double negative cell population was collected and seeded in MSC medium.

### **Flow Cytometry analysis**

For flow cytometry analysis the following antibodies were used: anti-CD11B-PE, anti-CD25-PE, anti-CD45.2-FITC, anti-CD31-FITC and anti-SCA-1-PE were purchased from Southern Biotechnology Associates (Birmingham, AL). Anti-TER-119-FITC, anti-MHCI-FITC, anti-MHCII-FITC, Rat IgG2b isotype control-FITC, Rat IgG2a isotype control-RPE were purchased from eBioscience (San Diego, CA). MSC were harvested and incubated specific antibody for 1hour. Next, cells were subjected to flow cytometry analysis using a FACScan flow cytometer (Becton Dickinson Immunocytometry System, San Jose CA). Cells were gated according to their high fluorescence intensity.

### **MSC proliferation**

For cell count, MSC at  $6 \times 10^3$  per  $\text{cm}^2$  were seeded in 24 well plate in MSC medium. Twenty-four hours later, MSC medium was replaced to Dulbecco's Modified Eagles Medium (DMEM) containing 2% FCS. After additional 24 hours, medium was replaced to DMEM containing 10% FCS with or without Pam3Cys. Cells were counted 24, 48 and 72 hours post Pam3Cys treatment. The mean cell-number  $\pm$  Standard Error was calculated for each triplicate or quadruplicate. For thymidine incorporation, MSC at  $8.5 \times 10^3$  per  $\text{cm}^2$  were seeded in 96 well plates in MSC medium. Twenty-four hours later, MSC medium was replaced to 2% FCS containing DMEM. After additional 24 hours, medium was replaced to DMEM containing 10% FCS with or without Pam3Cys for 48 hours. Cells were pulsed with  $1 \mu\text{Ci}$  [ $^3\text{H}$ ]  $^56$ thymidine for 4 hours, and [ $^3\text{H}$ ] thymidine incorporation was measured using a 96-well plate beta-counter. The mean cpm  $\pm$  Standard Error was calculated for each triplicate or quadruplicate.

### **Evaluation of MSC differentiation**

**Adipogenesis** - Cells were seeded at concentration of  $2.5 \times 10^4$  per  $\text{cm}^2$  in a 24 well plate. The next day, adipogenic medium containing 10ng/ml insulin (Sigma, Rehovot, Israel) and  $1 \times 10^{-8}\text{M}$  dexamethasone (Sigma) was added either with or without Pam3Cys. The cells were grown for one to three weeks, with medium replacement twice a week. Adipogenesis was detected by Oil red O staining. For Oil red O quantification, 4% IGEPAL CA 630 (Sigma) in isopropanol was added to each well. Light absorbance by the extracted dye was measured in 492nm.

**Osteogenesis** - Cells were seeded at a concentration of  $2.5 \times 10^4$  per  $\text{cm}^2$  well in a 24 well plate. The next day, osteogenic medium containing: 50 $\mu\text{g}/\text{ml}$  L-Ascorbic acid-2 phosphate (Sigma), 10mM Glycerol 2-phosphate di-sodium salt (Sigma), and  $1 \times 10^{-8}\text{M}$  Dexamethasone (Sigma) were added, either with or without Pam3Cys. The cells were grown for three to four weeks with medium replacement twice a week. Osteogenic

differentiation was detected by Alizarin red staining. For alizarin red quantification, 0.5N HCl, 5% SDS was added to each well. Light absorbance by the extracted dye was measured in 405nm. ALP activity was detected by BCIP/NBT substrate chromogen system (Dakocytomation, Glostrup, Denmark) according to the manufacturer's instructions.

**Chondrogenesis** - Cells were grown in micro-mass culture supplied with Chondrogenesis induction medium. Cells at  $0.2 \times 10^6$  per tube were centrifuged at 1200g in conical polypropylene tubes. After centrifugation, the supernatant was gently removed and 1ml of Chondrogenesis medium containing: 0.1mM L-ascorbic acid-2 phosphate (Sigma), 10ng/ml Human transforming growth factor -  $\beta$ 1 (TGF- $\beta$ 1) (Peprotech /Cytolab),  $1 \times 10^{-7}$ M dexamethasone (Sigma) was added either with or without Pam3Cys, with medium replacement twice a week. Chondrogenic differentiation was detected by Alcian blue staining. All phase-contrast micrographs were taken by IX71 OLYMPUS microscope (Olympus America Inc. Melville, New York, USA) and imported into DP Manager software as TIFF or JPEG files.

#### **Pam3Cys treatment of MSC cell-cultures**

Cells were seeded at the concentration of  $2.5 \times 10^4$  per  $\text{cm}^2$  well in a 24 well plate. The next day medium was added either with or without Pam3Cys. The cells were grown for three weeks, with medium replacement twice a week. Cells were then washed with PBS, fixated with PFA for 15 min, and stained either with Oil red O, Alizarin red or by BCIP/NBT substrate chromogen system.

#### **Reverse transcriptase - polymerase chain reaction (RT-PCR)**

Total RNA was isolated from confluent MSC using TRI reagent (MRC). Contaminating DNA was removed using DNase 1 treatment. Expression of mRNAs for mouse TLR-1 to TLR-9 as well as GAPDH were assessed by first-strand cDNA synthesis from 5  $\mu$ g of total RNA by extension of oligo(dT) primers with 200U of Moloney murine leukemia virus reverse transcriptase (MMLV-RT) (Promega, Madison, WI). Primer sequences are shown in Table 1. All PCR products were size fractionated by 1% agarose gel electrophoresis, and DNA bands were visualized by ethidium bromide staining.

#### **Interleukin-6 (IL-6) enzyme-linked immunosorbent assay (ELISA)**

MSC at  $6 \times 10^4$  per  $\text{cm}^2$  well were seeded in MSC medium in 96 well plates. Twenty-four hours later the medium was replaced by DMEM (Gibco/BRL, Gaithersburg, MD) supplemented with 10% FCS with or without TLR ligands. IL-6 concentration in culture media was determined by ELISA for IL-6 (OptiEIA kit, BD Pharmingen, San Diego, CA) according to the manufacturer's instructions. Standard curves were established using mouse recombinant IL-6. The assay detection limit was 16-32 pg/ml.

#### **TLR-2 blocking experiments.**

MSC were seeded in MSC medium in 96 well plates at concentration of  $3 \times 10^4$  per  $\text{cm}^2$ . Twenty-four hours later the medium was replaced by DMEM supplemented with 10% FCS, containing 60 $\mu$ g/ml penicillin, 100 $\mu$ g/ml streptomycin and 50mg/L kanamycin, either with 50 $\mu$ g/ml anti TLR-2 neutralizing antibody or control antibody (functional grade clone T2.5 and isotype control purchased from eBioscience) for 30 minutes in

37°C. LPS or Pam3cys at concentration of 100ng/ml were added to the cells for additional 4 hours. Conditioned media from cell culture were assayed for IL-6 secretion.

**In vitro “wound healing”**

For this assay,  $8 \times 10^5$  MSC were plated in a 6-well plate. Upon confluence cells were removed from a round area of 5 mm diameter by gently rotating the flat round top of a syringe nozzle onto the plate surface, to create an area empty of cells. This procedure is a modification of our previously reported method<sup>57</sup> and yields uniform size “wounds”. Five days later, cells were fixed with May-Grunwald and stained with Giemsa to detect the growth of the MSC into the “wound”. Photomicrographs were taken using IX71 OLYMPUS microscope (Olympus America Inc. Melville, New York, USA) or by Szx12 OLYMPUS microscope. The micrographs were imported into DP Manager software as TIFF and the average “wound” diameter was measured.

**Immunosuppression assay**

MSC were treated with Pam3Cys for 48 hours. The cells were then washed, trypsinised, counted and plated at different concentrations into round 96-well plates in medium containing RPMI-1640 supplemented with 2.5% FCS 100 U/ml penicillin, 100ug/ml streptomycin, 50uM 2β-ME and 2mM L-glutamine. We used  $12 \times 10^4$  cells of the T cell-line specific to MOG p35-55,  $5 \times 10^5$  irradiated (3000 rad) spleen cells and 10ug/ml of MOG p35-55 were added to each well. After 72 hours, the T cells were pulsed with 1 μCi [<sup>3</sup>H] thymidine, specific activity 5.0 Ci/mmol, for 16 hours, and [<sup>3</sup>H] thymidine incorporation was measured using a 96-well plate beta-counter. The mean cpm ± Standard Error was calculated for each triplicate or quadruplicate.

***Table 1 - TLR specific primers***

	Primer pairs	Tm <sup>0</sup>	Product size
TLR-1	Sense - GCGAGCAGAGGCAATTGTGGA Anti-sense - GACAGAGCCTGTAAGCATATTCG	51	428
TLR-2	Sense - CGGTCAGAAAACAACCTTACCGAA Anti-sense - TACCCAGCTCGCTCACTACGT	60	975
TLR-3	Sense - TTGTCTTCTGCACGAACCTG Anti-sense - CGCAACGCAAGGATTTTATT	53	207
TLR-4	Sense - CAAGAACATAGATCTGAGCTTCAACCC Anti-sense - GCTGTCCAATAGGGAAGCTTTCTAGAG	57	280
TLR-5	Sense - ACTGAATTCCTTAAGCGACGTA Anti-sense - AGAAGATAAAGCCGTGCGAAA	51	428
TLR-6	Sense - GTACCGTCAGTGCTGGAAATA Anti-sense - CCAGGAAAGTCAGCTTCGTC	47	543
TLR7	Sense - TTCCGATACGATGAATATGCACG Anti-sense - TGAGTTTGTCCAGAAGCCGTAAT	51	404
TLR-8	Sense - CGTTTTACCTTCCTTTGTCT Anti-sense - CATTTGGGTGCTGTTGTTTG	51	342
TLR-9	Sense - GGAGAATCCTCCATCTCCCAA Anti-sense - CCAGGAAGTTCTGGGCTCA	54	386
GAPDH	Sense - AACTTTGGCATTGTGGAAGG Anti-sense - ACACATTGGGGGTAGGAACA	55	225



### **Western blot analysis**

Cell lysats were micro-centrifuged 3000 rpm for separation of nuclear (pellet) and cytoplasmic (supernatant) fraction. The nuclear fraction was then lysed in a buffer containing 30 mM Hepes, 450mM NaCl, 25% glycerol, 0.5mM EDTA 12mM MgCl<sub>2</sub> 6mM DTT, 1mM PMSF and protease and phosphatase inhibitors. Equal amounts of protein were loaded and electrophoresed on a 12% sodium dodecyl sulfate-polyacrylamide gels (SDS-PAGE), transferred to nitrocellulose membranes, blocked and treated overnight with a mouse monoclonal anti-nucleolin, rabbit polyclonal anti-ERK 1/2 or rabbit polyclonal anti-NF-κB in PBS containing 0.05% tween (PBST) with 1% BSA. Following washing, the membranes were incubated with horseradish peroxidase-conjugated anti-mouse or rabbit IgG antibody in PBST with 2.5% skimmed milk. ECL detected the immunoreactive protein. Autoradiographs were scanned and quantified using NIH Image 1.62 program.

### **Statistical analysis**

The InStat 2.01 program (Graph Pad Software, San Diego, CA) was used for statistical analysis, by using the Welch t test, two-sided. Differences were considered statistically significant with  $p < 0.05$ .

## Results

### ***MSC express TLR-1 to TLR-8, but not TLR-9 mRNA***

We isolated and propagated plastic adherent, hematopoietic-cell depleted stromal cells from mouse bone marrow. The isolated stromal cell population was negative for expression of CD45, CD11b, CD31, CD34, Ter119 or MHC-II, and positive for MHC-I and stem cell antigen-1 (Sca-1) expression (Figure 1-A). The cell-surface marker expression analysis showed no contamination of the stromal cell culture with hematopoietic cells. To establish that the stromal cell cultures contained MSC, the cells were cultured under various conditions to assess their capacity to differentiate into mesodermal lineages<sup>1,2</sup>. Differentiation into osteocytes, following supplementation of the cell culture media with osteogenic induction medium, was detected by Alizarin red staining of the cells (Figure 1-B a and b), and by alkaline phosphatase (ALP) substrate hydrolysis (Figure 1-B c and d). Adipogenic differentiation induced with adipogenic induction medium was detected by Oil red O staining (Figure 1-B e and f). Cells grown in micro-mass culture supplied with chondrogenic induction media resulted in chondrogenic differentiation detected by Alcian blue staining (Figure 1-B g and h). As shown in figure 1-B, the isolated, purified stromal cells were able to differentiate into chondrocytes, adipocytes and osteocytes by incubation with specific induction media, suggesting that these isolated stromal cultures indeed contained MSC.

TLR mRNA expression by MSC was examined by RT-PCR. Specific primers were used to amplify sequences from TLR-1 to TLR-9, and the identity of the fragments was confirmed by sequencing. The results presented in Figure 2 show that MSC expressed TLR-1 through TLR-8 but not TLR-9 mRNA. Since TLR-1, TLR-5 and TLR-7 genomic sequences do not contain introns, we verified that the RNA samples do not contain genomic DNA contamination by performing PCR of non-reverse transcribed RNA, which indeed did not result in PCR products (data not shown). To confirm the lack of TLR-9, we examined its expression under different induction conditions. TLR-9 mRNA was not detected by PCR analysis in MSC incubated with TLR-9 ligand CpG for 48 hours, in MSC differentiated into adipocytes or osteocytes, or in MSC grown for three weeks in the presence of Pam3Cys (data not shown).

### ***TLR-ligands induce MSC IL-6 secretion and NF- $\kappa$ B nuclear translocation***

In immune cells, TLR activation leads to secretion of a variety of cytokines<sup>43,48,50,51,58-61</sup>. We therefore tested conditioned media from MSC following culture with various known TLR ligands by ELISA to detect the presence of several cytokines, including IL-4, TGF- $\beta$ , IL-10, IL-6, IL-12, IFN- $\gamma$ , IL-1 $\beta$  and Tumor necrosis factor- $\alpha$  (TNF- $\alpha$ ). As expected, all TLR ligands tested activated the RAW 264.7 cell line to secrete IL-12 (data not shown), verifying the potency of the ligands used and the validity of the assays. Among the TLR ligands, only some induced IL-6 secretion by MSC cultures (Figure 3-A and B) including TLR-2 ligands peptidoglycan (PG) and Pam3Cys, TLR-3 ligand Poly (I:C), TLR-4 ligands LPS and HSP60. The TLR-5 ligand flagellin, TLR-7/8 ssRNA40, TLR-7 ligand Imiquimod (R837) and the TLR-9 ligand CpG did not induce IL-6 secretion by MSC. IL-6 secretion induced by Pam3Cys, PG, LPS or Poly (I:C) increased depending on dose (Figure 3-C) and time (Figure 3-D).

MSC IL-6 secretion induced by Pam3Cys could be completely blocked by TLR-2 neutralizing antibodies (Figure 3-E), confirming that the IL-6 secretion depended on TLR-2 signaling.

In immune cells, TLR activation induces nuclear translocation of NF- $\kappa$ B from the cell cytosol, which results in NF- $\kappa$ B-dependent gene expression<sup>62</sup>. We therefore investigated NF- $\kappa$ B activity in MSC after exposure to TLR ligands. As shown in Figure 4, Pam3Cys and LPS both induced NF- $\kappa$ B translocation to the nucleus within 15 minutes, further substantiating the functional status of TLR expressed by MSC.

### ***TLR-2 ligand Pam3Cys augments spontaneous MSC proliferation, inhibits migration and does not effect immunosuppressive activity***

To examine the effect of Pam3Cys on MSC proliferation, MSC were cultured with Pam3Cys for several days, and were then counted or pulsed with [<sup>3</sup>H] thymidine. As shown in Figure 5, Pam3Cys enhanced MSC proliferation and thymidine incorporation at 48 to 72 hours after its addition to the culture. The increase in thymidine incorporation was two-fold (Figure 5-Aa), while cell counts were elevated by 40% (Figure 5A b and c). To test whether Pam3Cys affects MSC migration, confluent MSC cultures were subjected an *in vitro* “wound healing” assay. MSC were removed from a 5mm diameter round circle by gentle rubbing of the plate surface. The cells were then incubated with fresh medium containing Pam3Cys for 5 days. As shown in figure 5-B, MSC cultures treated with Pam3Cys migrated to a lesser extent into the empty area, in comparison to the control, suggesting that Pam3Cys inhibits MSC basal motility. We next examined the effect of Pam3Cys on MSC immunosuppressive activity. A T-cell line specific to MOG p35-55 was activated in the presence of MSC treated with different doses of Pam3Cys. As shown in figure 5-C, MSC pre-incubation with Pam3Cys did not affect their ability to inhibit T-cell proliferation *in vitro*.

### ***TLR-2 ligand Pam3Cys reduces spontaneous MSC adipogenesis***

In untreated MSC cultures, some cells showed ALP activity and spontaneous adipogenic differentiation under over-confluence conditions (Figure 6-A a c and e). Despite ALP expression, however, no calcium deposition was observed. Adding Pam3Cys to the MSC cultures resulted in a reduction of spontaneous adipogenic differentiation in the over-confluent cultures (Figure 6-A a and b), and the cultures manifested sporadic, small calcium deposits (Figure 6-A c, d and 6-B) and increased ALP activity (Figure 6-A e and f). Thus, in non-induced MSC culture, Pam3Cys promoted some osteogenic differentiation of MSC and at the same time inhibited adipogenic differentiation.

### ***Pam3Cys inhibits induced differentiation of MSC into mesodermal derivatives***

We further examined the effects of Pam3Cys on the induction of MSC differentiation into adipocytes, osteocytes and chondrocytes. MSC were incubated with osteogenic (Figure 6-C b, c, e and f), adipogenic (Figure 6-C h and i) or chondrogenic (Figure 6-C k and l) induction media, with (Figure 6-C c, f, i and l) or without (Figure 6-C b, e, h and k) Pam3Cys, and were then allowed to differentiate. As shown in Figure 7,

the presence of Pam3Cys in the osteogenic medium inhibited calcium deposition (Figure 6-C c), and reduced ALP activity (Figure 6-C f). The presence of Pam3Cys in adipogenic medium significantly reduced MSC differentiation into adipocytes; however, a few lipid-accumulating cells could still be detected (Figure 6-C i). The presence of Pam3Cys in chondrogenic medium significantly inhibited proteoglycan secretion into the extra-cellular matrix (Figure 6-C l). MSC cultures, induced to differentiate into osteogenic or adipogenic lineages in the presence of Pam3Cys were stained with Oil red O or Alizarin red respectively, then the stains were extracted and measured by light absorbance (figure 6-D and E). Thus, in MSC cultures induced to differentiate, the effect of Pam3Cys was pronounced and uniform; it reduced MSC differentiation into osteoblasts, adipocytes and chondrocytes.

### ***MSC from MyD88 deficient mice exhibit incomplete differentiation potential***

MyD88 is an adaptor protein that signals-down stream of most TLRs molecule<sup>63</sup>, while only TLR3 and TLR4 have MyD88 independent pathways<sup>64,65</sup>. The expression of functional TLR receptors in MSC raised the question as to whether these receptors are of importance in the development of MSC. We generated two independent strains of MSC from MyD88 deficient mouse bone marrow. FACS analysis showed that the two strains were free of hematopoietic stem cells and positive for Sca-1 (not shown). MyD88 deficient MSC did not secrete IL-6 in response to LPS, PG, Pam3Cys, or Imiquimod. However, IL-6 secretion in response to Poly(I:C) was detected in both MyD88 deficient strains of MSC (figure 7-A), thereby implicating Poly(I:C) signaling in a MyD88 independent manner, inducing IL-6 secretion. We then examined the ability of MSC from MyD88 deficient mice to differentiate into adipocytes, osteocytes and chondrocytes. As shown in Figure 7 B C and D, MyD88 deficient MSC effectively differentiated into adipocytes but failed to differentiate into osteocytes and chondrocytes, as examined by Alizarin red and Alcian blue staining, respectively. These results implicate TLR signaling in the acquisition or maintenance of MSC multipotency.

## **Discussion**

The natural role of MSC is not yet clear, however, they are presumed to maintain regeneration of mesodermal tissue, throughout the lifetime of an individual. This function is dependent on the balance between the ability of the stem cell population to self-renew and the ability of the cells to differentiate into specialized cell types. The balance between self-renewal and differentiation must be tightly regulated; over-differentiation might cause stem cell depletion, and excess self-renewal might induce large numbers of proliferating progenitors, leading to mutations and tumorigenesis. MSC exhibit multiple functions and are considered to be important for prospective cell-based therapy. Understanding the factors and mechanisms regulating their ability to differentiate, self-renew, participate in injury repair and suppress an ongoing immune response are crucial, and could allow us to manipulate MSC for therapeutic use. We show here that functional TLR are expressed in adult MSC and that their activation by

specific ligands regulates MSC functions. This, to the best of our knowledge, is the first demonstration of involvement of TLR and their ligands in the regulation of cytokine release and multilineage differentiation of MSC.

Toll receptors, were first identified in the drosophila<sup>36</sup>, where they are required both for immunity against pathogens and for embryonic development; in the drosophila immune system, toll is required for protection against fungal infection<sup>35</sup>, while during embryonic development, the different members of the toll family are essential for morphogenesis and embryonic development<sup>31</sup>. Recently, TLR expression and activation were demonstrated during hematopoietic stem cell differentiation and in human adipose tissue derived mesenchymal progenitors<sup>66,67</sup>. Here we extend TLR signaling in mammalian systems beyond its known immune functions and implicate its regulation in the differentiation of an adult stem cell, the MSC. These findings point to a developmental role for TLR in mammalian systems.

On the mRNA level, MSC expressed several TLR with the exclusion of TLR-9. Expression on the mRNA level does not necessarily mean that MSC bear functional receptors. However, our findings indicate the functional status of TLR-2 in MSC. Neutralizing antibodies to TLR-2 abrogated the secretion of IL-6 by the TLR-2 ligand Pam3Cys. IL-6 was also secreted from MSC incubated with, PG, LPS, Poly (I:C) and HSP60, but not with flagellin, ssRNA40, Imiquimod (R837) or CpG. The lack of TLR9 transcripts may account for unresponsiveness to CpG. Our findings are in accord with data obtained for synovial fibroblasts, where TLR-2 is expressed and its activation leads to IL-6 secretion, while TLR-9 is expressed at a low level and its activation does not induce IL-6 secretion<sup>68</sup>. IL-6 is a multifunctional cytokine involved in the regulation of many systems. It plays a major role in regulation of both inflammatory responses and hematopoiesis. During pathogen infection, IL-6 is released from immune cells following TLR and other innate receptor activation<sup>69,70</sup>, and during hematopoiesis, IL-6 regulates the differentiation and function of lymphoid and hemopoietic cells<sup>71-74</sup>. In addition, IL-6 over-production is associated with the pathology of autoimmune diseases such as Rheumatoid Arthritis (RA) and Crohn's disease<sup>75</sup>.

Pam3Cys, a synthetic lipo-peptide, was shown to be the most potent IL-6 inducer of the TLR ligands used in this study, inducing 5-fold higher IL-6 levels than PG, LPS or Poly (I:C). PG and Pam3Cys are both TLR-2 ligands, however, they do not share the same signaling molecules. In macrophages, Pam3Cys induces TLR2-TLR1 hetero-dimerization<sup>76</sup>, while PG induces TLR2-TLR6 hetero-dimerization<sup>77</sup>, thus recruiting different signaling pathways. This can account for the different magnitudes of IL-6 secretion by Pam3Cys and PG. The suppression of MSC differentiation by the TLR-2 ligand further substantiates the functional status of TLR-2 in MSC; addition of the TLR-2 ligand, Pam3Cys, to chondrogenic, osteogenic and adipogenic induction media, reduced MSC differentiation into chondrocytes, osteocytes and adipocytes, demonstrating a regulatory role for TLR in MSC. Inhibition of MSC differentiation by Pam3Cys did not involve MSC death, assessed by cell proliferation and by cell cycle analysis (Figure 5 and data not shown).

Pam3Cys induced IL-6 secretion and blocked MSC responsiveness to differentiation factors. The question was therefore raised as to whether IL-6 or other mediators secreted by MSC, in response to Pam3Cys, are responsible for the observed inhibition of differentiation. However, recombinant IL-6 by itself or conditioned medium

of MSC induced by Pam3Cys failed to block the induction of MSC differentiation (results now shown).

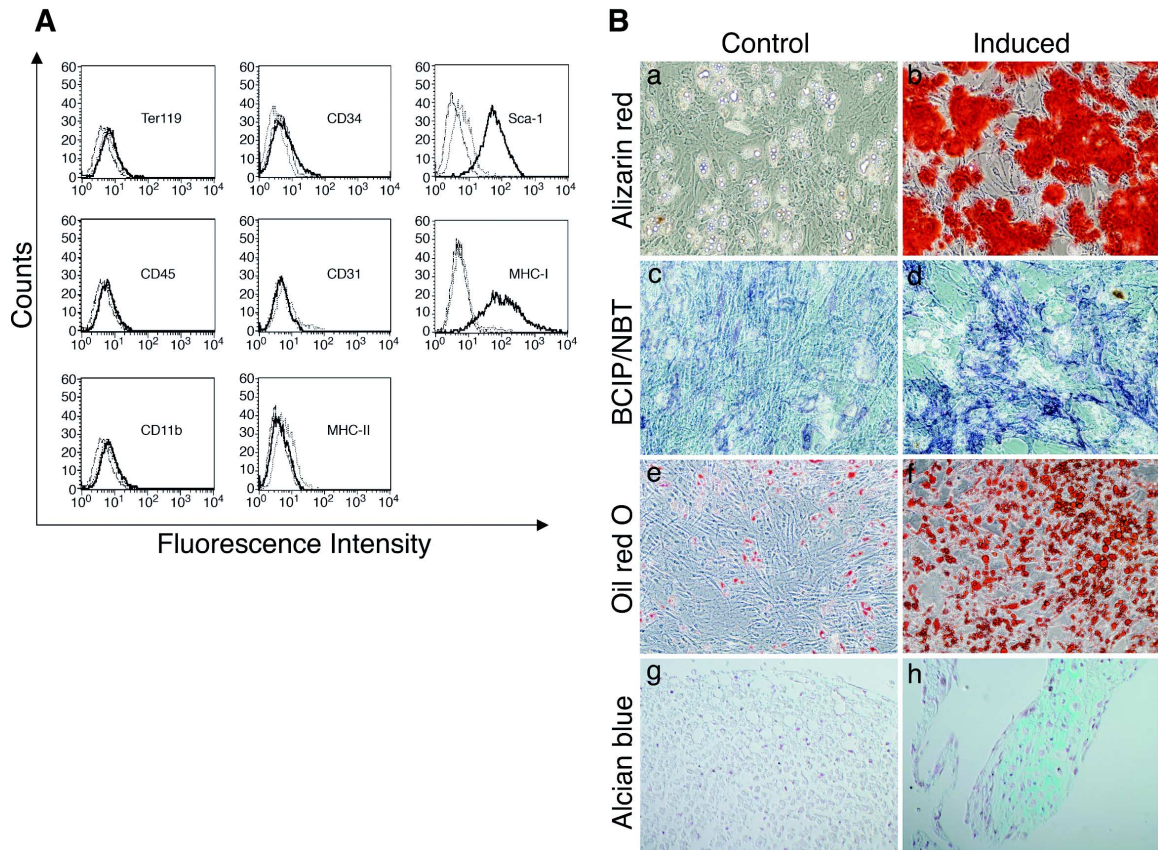
MSC cultures incubated with Pam3Cys without any additional inducing factors still showed reduced spontaneous adipogenesis, but exhibited an increase in ALP activity and *de novo* formation of extra-cellular calcium deposition. This osteogenic differentiation was mild and sporadic in comparison to MSC induced to differentiate by osteogenic induction media, though clearly apparent. Possible explanations for the disparate consequences of the TLR-2 ligand relate to the heterogeneity of primary MSC populations or to the cell state of lineage commitment in culture, inducing osteoblastic differentiation on a minor cell population within the bulk of the MSC culture. This effect could be masked by the overwhelming response to differentiation inducers to which the majority of cells in the culture react. This latter assumption is substantiated by the opposite responses of clonal populations of bone-marrow derived stromal cells to TLR ligands; while Pam3Cys promoted an MSC-like cell line MBA-15 to differentiate into osteocytes, it inhibited under the same conditions, the differentiation of the cell line MBA-13, which is biased to the osteogenic lineage (data not shown). Future studies should identify the specific cell population undergoing osteogenic differentiation after incubation with Pam3Cys and the mechanisms underlying this response. IL-6 secreted by Pam3Cys-treated MSC might be involved in osteogenic differentiation. IL-6 promotes terminal osteogenic differentiation by committed osteo-progenitors, but not by MSC<sup>78</sup>. Thus, IL-6 secreted by MSC, in response to Pam3Cys, might promote differentiation of pre-osteocytes into ALP-expressing, calcium-depositing osteocytes in the cell culture, leading to sporadic differentiation of the osteo-progenitors. Pam3Cys increased MSC proliferation and inhibited differentiation in induced MSC cultures. This might indicate a shift of MSC to self-renewal rather than differentiation. Whether TLR-activated MSC maintain their self-renewal is to be further explored in the future.

NF- $\kappa$ B is a transcription factor that regulates a large number of genes in response to many cellular stimuli, including inflammation<sup>79,80</sup>. These stimuli induce phosphorylation and degradation of the NF- $\kappa$ B-sequestering I $\kappa$ B, thus leading to the release of NF- $\kappa$ B, and its translocation into the nucleus where it exerts its transcriptional regulator functions. As shown in Figure 4, activation of MSC by LPS and Pam3Cys induced NF- $\kappa$ B nuclear translocation, suggesting that at least TLR-2 and TLR-4 signaling in MSC induce NF- $\kappa$ B dependent signaling. Interestingly, NF- $\kappa$ B activation was shown to inhibit the induced-differentiation of MSC, in particular, into adipocytes<sup>81,82</sup>, osteoblasts<sup>83,84</sup>, chondrocytes and myocytes<sup>85</sup>. This appears to result in down-regulating specific lineage transcription-factor functions that are required for differentiation, These findings offer a molecular mechanism for the inhibition of MSC differentiation by the TLR-2 ligand Pam3Cys through the NF- $\kappa$ B pathway.

MSC residing in the BM and in peripheral tissues may encounter molecular infectious agents, resulting in TLR activation. Activation of TLRs by endogenous molecules such as heat-shock proteins and extra-cellular matrix breakdown-products, might occur as well<sup>50-52</sup>. These endogenous TLR ligands might regulate MSC function by endogenous stimuli during sterile inflammation and tissue repair found at sites of tissue injury and cell necrosis<sup>58</sup>. MSC isolated from osteoarthritis patients, where chronic synovitis occurs, show decreased adipogenesis and chondrogenesis compared to control subjects<sup>86</sup>. This indicates the attenuation of MSC function by the inflammatory

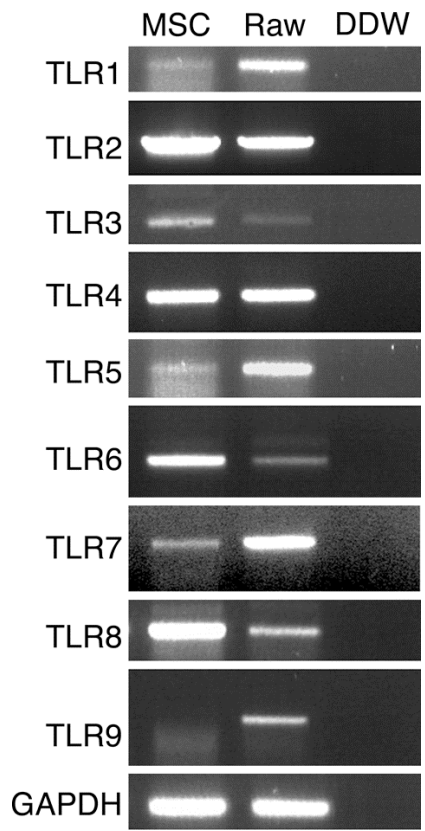
environment. Whether such occurrences characterize inflammatory processes in general remains to be determined. The link between MSC and the immune response has been implicated by several lines of evidence<sup>56,87-91</sup>. MSC were shown to localize in sites of inflammation<sup>15,92</sup>, and have recently been shown to suppress T-cell, NK-cell and B-cell responses *in vitro*<sup>93</sup>. We suggest an additional level of crosstalk between the MSC compartment and the immune response, namely the direct activation of MSC via TLR signaling. In our study, Pam3Cys did not alter the ability of MSC to inhibit T-cell activation. However, Pam3Cys did inhibit MSC basal migration, which might indicate MSC detainment in inflammatory sites, and subsequently, down-regulation of immune responses.

To examine whether TLR signaling might be involved in MSC development, we first examined the incidence of colony forming unit-fibroblasts (CFU-F) but found no statistically significant differences between normal and MyD88 deficient mice. Furthermore, we generated MSC from MyD88 deficient mice. These MSC secreted IL-6 only in response to Poly(I:C), a TLR-3 ligand, in a MyD88-independent manner. The other TLR ligands did not induce the secretion of IL-6, though TLR-4 ligands have been shown to have a Myd88 independent signaling pathways as well<sup>64,65</sup>. The MyD88 MSC expressed Sca-1 as would be expected from intact MSC. However, they lacked the ability to differentiate into osteocytes or chondrocytes under the conditions that were permissive for differentiation of their normal counterparts. These results imply that TLR signaling may be required for acquisition of multipotency by MSC. It cannot be excluded, at this point, that MyD88 is required for a pathway unrelated to TLR activation. Based on these findings, we propose that TLR and their ligands may be part of the tissue regulatory mechanisms that limit the capacity of MSC to express in full their differentiation potential. Further characterization of TLR activated MSC using *in vivo* experimental systems is needed to establish the physiological role for TLR in regulation of adult stem cell functions.

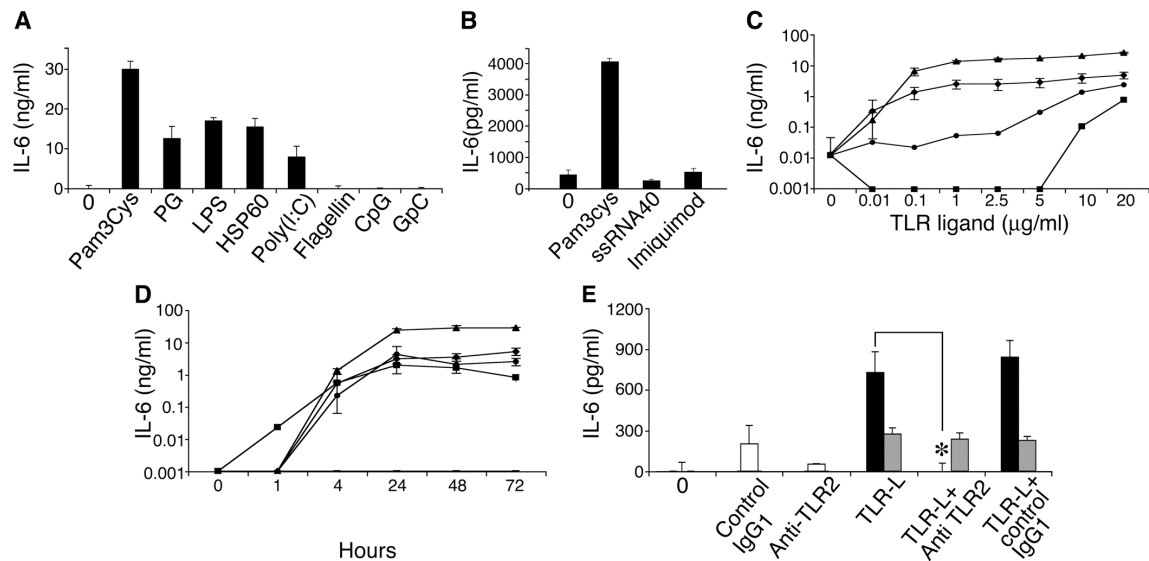


**Figure 1. MSC, free of hematopoietic cells, express Sca-1 and differentiate into osteocytes, adipocytes and chondrocytes.** MSC were stained with antibodies against surface markers or control antibodies and subjected to flow cytometry analysis (A). Thick black lines represent specific antibody staining, thin black lines represent non-stained cells and the dashed lines represent staining with control antibody. MSC were cultured with (B - b, d, f and h) or without (B - a, c, e and g) induction media for 2-3 weeks to induce cell differentiation. Differentiation into osteocytes was detected by Alizarin red staining (B - a and b) and by ALP activity assay (B - c and d). Adipogenesis was detected by Oil red O staining (B - e and f). Differentiation into chondrocytes was detected by Alcian blue staining (B - g and h). Original magnifications: x10 for B (a-f), x20 for B (g and h).

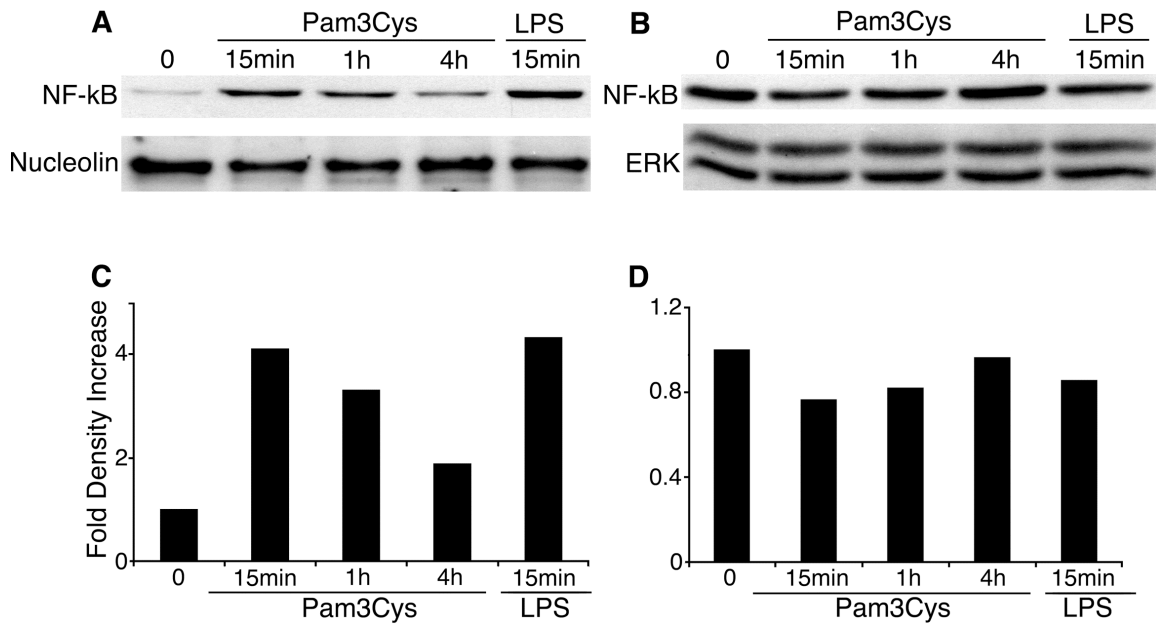




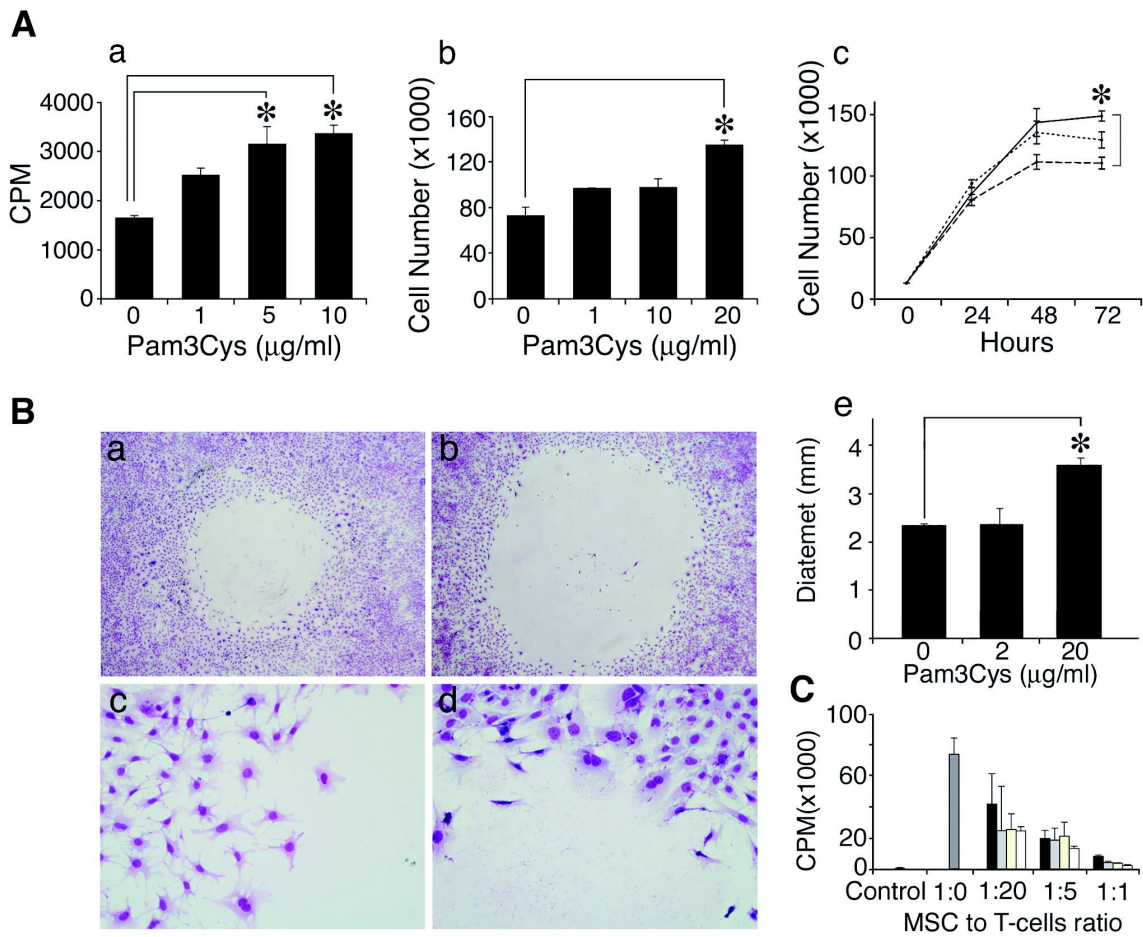
**Figure 2. TLR mRNA expression by MSC.** MSC total RNA was subjected to RT-PCR, amplified with TLR-1 to TLR-9 specific primers. RAW 264.7 cell line cDNA was used as positive control for PCR amplification.



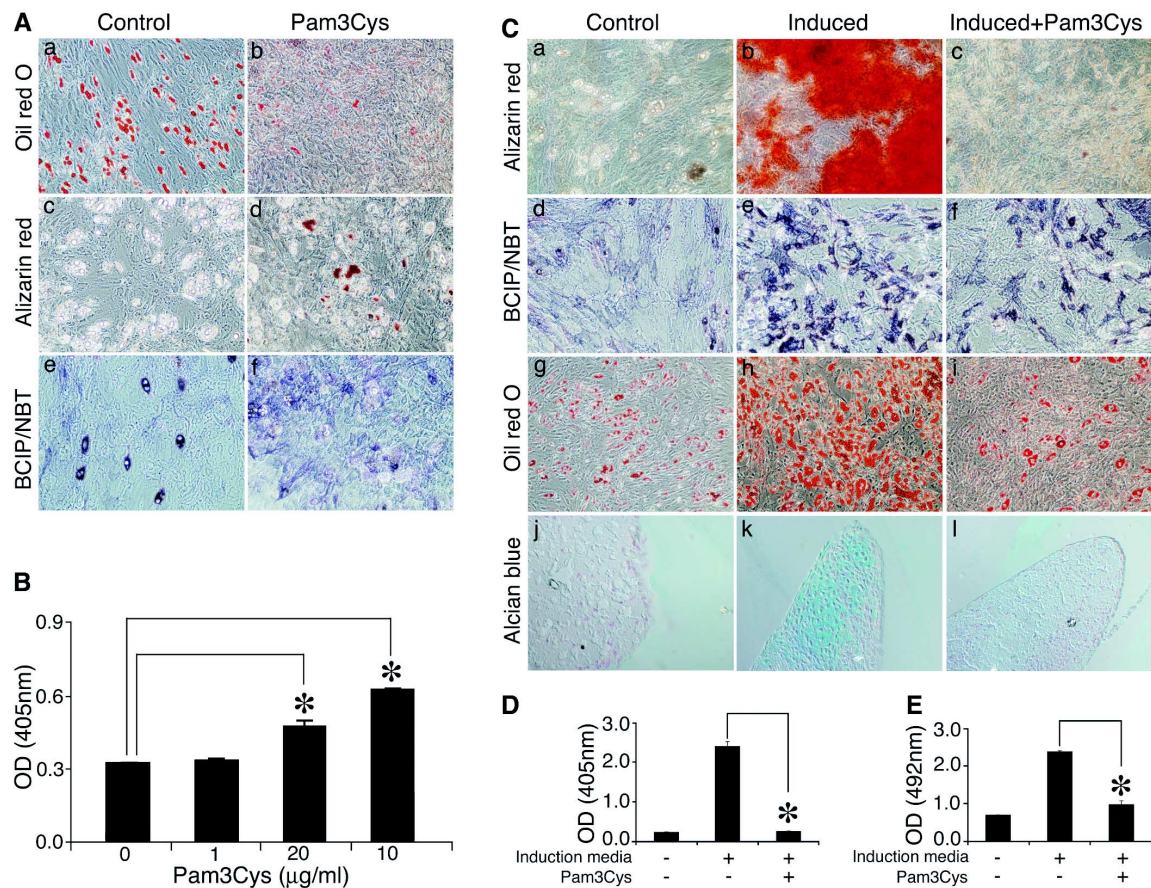
**Figure 3. MSC secrete IL-6 in response to TLR ligands.** MSC were plated in a 96 well plate. Twenty four hours later, MSC medium was replaced by 10% FCS in DMED containing 10µg/ml of either Pam3Cys, PG, LPS, HSP60, Poly(I:C), flagellin, CpG, GpC or 20µg/ml of ssRNA40 and Imiquimod (R837). Conditioned media were collected from the cultures after 72 hours (A) or 24 hours (B) and assayed by ELISA for the presence of IL-6. IL-6 secretion by MSC was measured in response to different (10ng/ml – 20µg/ml) doses of: ▲ Pam3Cys; ●, PG; ◆, LPS; ■, Poly(I:C); or —, without TLR ligands for 7 days (C), and at different time points (0 to 72 hours) in response to 20µg/ml of the TLR ligands (D). MSC were plated in a 96 well plate. Twenty-four hours later, MSC were pre-incubated with anti TLR-2 antibody, control antibody or medium alone, followed by addition of 100ng/ml Pam3cys (black bars), LPS (gray bars) or none (white bars) for 4 hours. Conditioned media from cultures were assayed by ELISA for IL-6 secretion (E). The results represent the mean ± SE of triplicate wells. \*,  $p < 0.05$  vs. Pam3Cys treatment with no antibody addition, by the two-tailed Welch  $t$  test.



**Figure 4. Pam3Cys and LPS induce NF-κB nuclear translocation in MSC.** MSC were plated in MSC medium. When the cells reached confluence, 10μg/ml Pam3Cys or LPS were added in 10% FCS containing DMED. MSC were harvested at 15 minutes, 1 hour or 4 hours and nuclear and cytoplasmic proteins were extracted. The nuclear (A and C) and cytoplasmic (B and D) extracts were quantified, run on SDS-PAGE gel and blotted with anti-NF-κB p65, anti-nucleolin or anti-total ERK antibodies. The autoradiographs were quantified by densitometry (C and D).

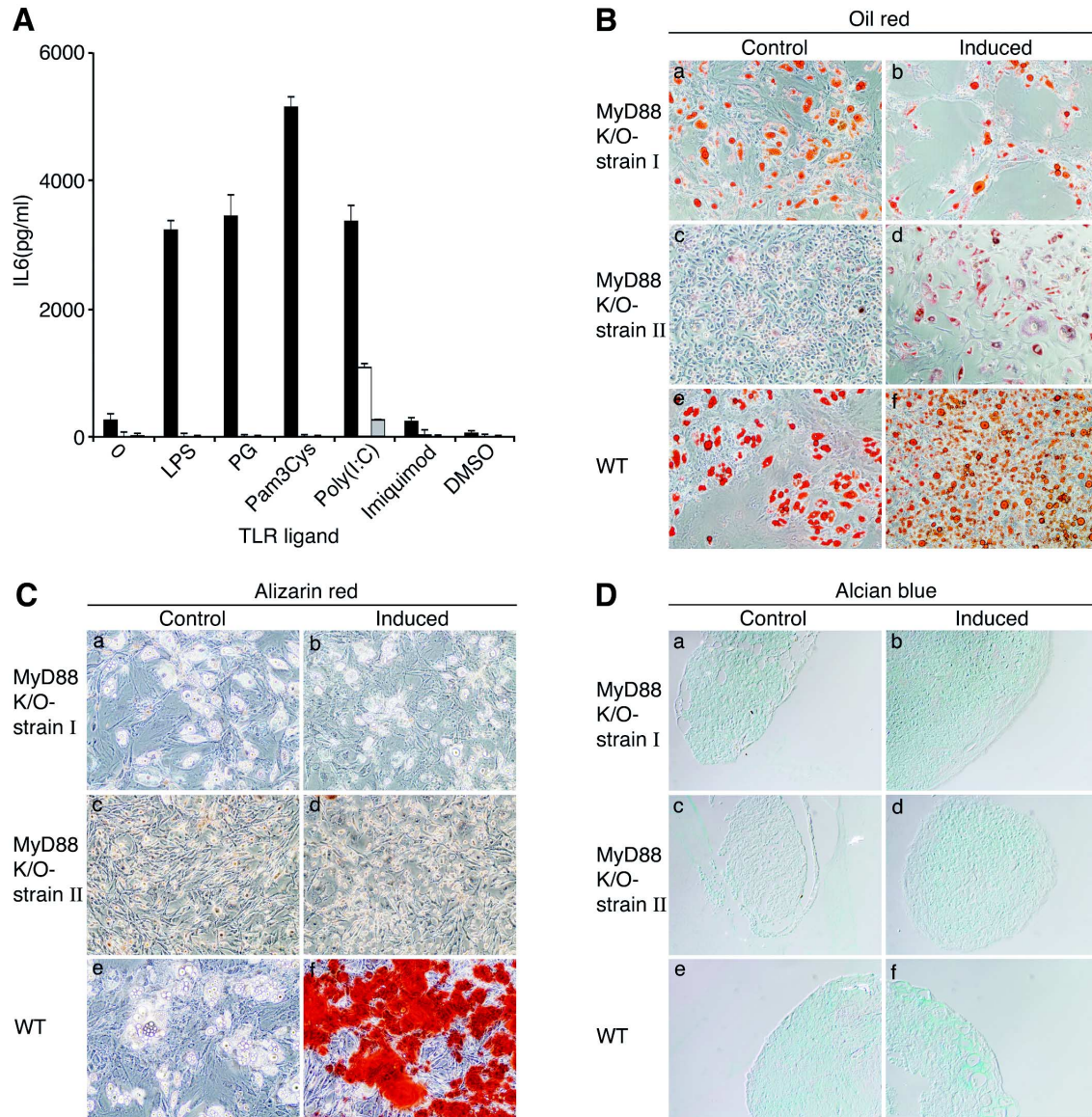


**Figure 5. Pam3Cys promotes MSC proliferation, inhibits *in vitro* “wound healing” and does not affect MSC ability to inhibit T-cell response.** MSC were plated in MSC medium, starved with 2% serum-containing media for 24 hours following 10% FCS-containing media with Pam3Cys. MSC proliferation was measured after 48 hours by [ $^3\text{H}$ ] thymidine incorporation (A-a) and by cell count (A-b). Time response (A-c) of an experiment similar to B, where, MSC were treated with medium alone (dashed line); 1  $\mu\text{g/ml}$  Pam3Cys (dotted line); or 10  $\mu\text{g/ml}$  Pam3Cys (solid line) were counted every 24 hours for 3 days. For migration assay a round a 5mm diameter space was made in confluent MSC cultures and DMED containing 10% FCS without (B-a and c) or with (B-b and d) 20 $\mu\text{g/ml}$  Pam3Cys was added. Five days later, cells were fixed and stained. The diameter of the circles was measured and quantified in B-e. Original magnifications: x10 for (B-c and d), and x6.3 for (B-a and b) The results represent the mean  $\pm$  SD of a total of 5 “wounds” in duplicate wells. For immunosuppression assay, MSC were incubated for 48 hours with: 1 $\mu\text{g/ml}$ ; white bars, 10 $\mu\text{g/ml}$ ; yellow or 20 $\mu\text{g/ml}$ ; gray bars or without Pam3Cys: black bars, washed and added to a T-cell line activated by its cognate antigen, in different ratios. After 72 hours, cells were pulsed with 1  $\mu\text{Ci}$  [ $^3\text{H}$ ] thymidine and measured for [ $^3\text{H}$ ] thymidine incorporation (C). The results represent the mean  $\pm$  SD of triplicate wells.



**Figure 6. Pam3Cys modulates MSC differentiation: (A) Pam3Cys inhibits spontaneous adipogenesis, induces calcium deposition and increases ALP activity in un-induced MSC.** MSC were plated in MSC medium. Forty-eight hours later, the medium was replaced with DMED containing 10% FCS with (A- 20μg/ml in b, 10μg/ml in d and 5μg/ml in f) or without (A-a, c and e) Pam3Cys. Two to three weeks later, the cells were stained with Oil red O (A-a and b), Alizarin red (A-c and d) or ALP substrate (A-e and f) to examine possible spontaneous differentiation. Original magnifications: x10 for all micrographs. Alizarin red stain from experiment shown in (A-c and b) was extracted from the cell culture and quantified by light absorbance in 405nm. **(B) Pam3Cys reduces MSC-induced differentiation into adipogenic, osteogenic and chondrogenic pathways.** MSC were induced to differentiate into osteocytes (C-b, c, e and f), adipocytes (C-h and i) or chondrocytes (C-k and l) with (5μg/ml in C-c, f, l and 10μg/ml in A i) or without (C-b, e, h and k) Pam3Cys. After one week (adipogenic differentiation) or three weeks (osteogenic and chondrogenic differentiation), cell cultures were fixed and stained with Alizarin red (C-a, b and c), ALP substrate (C-d, e and f) Oil red O (C-g, h and i) or Alcian blue (C-j, k and l). Original magnifications: x10 for (C-a to i), x20 for (C-j, k and l). MSC incubated with osteogenic induction media with or without 1μg/ml Pam3Cys for three weeks were stained with Alizarin red, which was then extracted and measured for light absorbance at 405nm (D). MSC incubated

with adipogenic induction media with or without 10 $\mu$ g/ml Pam3Cys for one week were fixed and stained with Oil red O, which was then extracted and measured for light absorbance at 492nm (E). The results represent the mean  $\pm$  SE of duplicate wells. \*,  $p < 0.04$  vs. untreated control, by the two-tailed Welch  $t$  test.



**Figure 7. MyD88-deficient MSC secrete IL-6 in response to Poly(I:C) and differentiate into adipocytes but lack osteogenic and chondrogenic capacities.** (A), WT; black bars, and two independent strains of MyD88 deficient MSC; white and gray bars, were plated in MSC medium. Two days later, MSC were treated with 20 $\mu$ g/ml of TLR ligands. Conditioned media were collected from the cultures after 24 hours and assayed by ELISA for the presence of IL-6. The results represent the mean  $\pm$  SE of triplicate wells. \*,  $p < 0.05$  vs. Pam3Cys treatment, by the two-tailed Welch  $t$  test. WT and two different batches of MyD88 deficient MSC were induced to differentiate into

adipocytes (B-b, d and f), osteocytes (C-b, d and f) and chondrocytes (D-b, d and f). After three weeks cell cultures were fixed and stained with Oil red O (B-a to f), Alizarin red (C-a to f) and Alcian blue (D- a to f). Original magnifications: x10 for (B and C) and x20 (D).

## References:

1. Pittenger MF, Mackay AM, Beck SC, et al. Multilineage potential of adult human mesenchymal stem cells. *Science*. 1999;284:143-147.
2. Muraglia A, Cancedda R, Quarto R. Clonal mesenchymal progenitors from human bone marrow differentiate in vitro according to a hierarchical model. *J Cell Sci*. 2000;113:1161-1166.
3. Bernad A, Kopf M, Kulbacki R, Weich N, Koehler G, Gutierrez-Ramos JC. Interleukin-6 is required in vivo for the regulation of stem cells and committed progenitors of the hematopoietic system. *Immunity*. 1994;1:725-731.
4. Dexter TM, Allen TD, Lajtha LG. Factors controlling the proliferation of haemopoietic stem cells in vitro. *Symp Soc Dev Biol*. 1978:149-160.
5. Zipori D. Regulation of hemopoiesis by cytokines that restrict options for growth and differentiation. *Cancer Cells*. 1990;2:205-211.
6. Zipori D. The renewal and differentiation of hemopoietic stem cells. *Faseb J*. 1992;6:2691-2697.
7. Zipori D. Stromal cells from the bone marrow: evidence for a restrictive role in regulation of hemopoiesis. *Eur J Haematol*. 1989;42:225-232.
8. Majumdar MK, Thiede MA, Mosca JD, Moorman M, Gerson SL. Phenotypic and functional comparison of cultures of marrow-derived mesenchymal stem cells (MSCs) and stromal cells. *J Cell Physiol*. 1998;176:57-66.
9. Hackney JA, Charbord P, Brunk BP, Stoeckert CJ, Lemischka IR, Moore KA. A molecular profile of a hematopoietic stem cell niche. *Proc Natl Acad Sci U S A*. 2002;99:13061-13066. Epub 2002 Sep 13 011.
10. Kadereit S, Deeds LS, Haynesworth SE, et al. Expansion of LTC-ICs and maintenance of p21 and BCL-2 expression in cord blood CD34(+)/CD38(-) early progenitors cultured over human MSCs as a feeder layer. *Stem Cells*. 2002;20:573-582.
11. Zhang J, Niu C, Ye L, et al. Identification of the haematopoietic stem cell niche and control of the niche size. *Nature*. 2003;425:836-841.
12. Etheridge SL, Spencer GJ, Heath DJ, Genever PG. Expression profiling and functional analysis of wnt signaling mechanisms in mesenchymal stem cells. *Stem Cells*. 2004;22:849-860.
13. Mackenzie TC, Flake AW. Human mesenchymal stem cells persist, demonstrate site-specific multipotential differentiation, and are present in sites of wound healing and tissue regeneration after transplantation into fetal sheep. *Blood Cells Mol Dis*. 2001;27:601-604.
14. Mosca JD, Hendricks JK, Buyaner D, et al. Mesenchymal stem cells as vehicles for gene delivery. *Clin Orthop Relat Res*. 2000:S71-90.
15. Wu GD, Nolta JA, Jin YS, et al. Migration of mesenchymal stem cells to heart allografts during chronic rejection. *Transplantation*. 2003;75:679-685.
16. Shake JG, Gruber PJ, Baumgartner WA, et al. Mesenchymal stem cell implantation in a swine myocardial infarct model: engraftment and functional effects. *Ann Thorac Surg*. 2002;73:1919-1925; discussion 1926.
17. Friedenstein AJ, Deriglasova UF, Kulagina NN, et al. Precursors for fibroblasts in different populations of hematopoietic cells as detected by the in vitro colony assay method. *Exp Hematol*. 1974;2:83-92.



18. Friedenstein AJ, Piatetzky S, II, Petrakova KV. Osteogenesis in transplants of bone marrow cells. *J Embryol Exp Morphol.* 1966;16:381-390.
19. Owen M. Marrow stromal stem cells. *J Cell Sci Suppl.* 1988;10:63-76.
20. Zipori D, Bol S. The role of fibroblastoid cells and macrophages from mouse bone marrow in the in vitro growth promotion of haemopoietic tumour cells. *Exp Hematol.* 1979;7:206-218.
21. Zipori D, Friedman A, Tamir M, Silverberg D, Malik Z. Cultured mouse marrow cell lines: interactions between fibroblastoid cells and monocytes. *J Cell Physiol.* 1984;118:143-152.
22. Benayahu D, Gurevitch O, Zipori D, Wientroub S. Bone formation by marrow osteogenic cells (MBA-15) is not accompanied by osteoclastogenesis and generation of hematopoietic supportive microenvironment. *J Bone Miner Res.* 1994;9:1107-1114.
23. Nagaya N, Fujii T, Iwase T, et al. Intravenous administration of mesenchymal stem cells improves cardiac function in rats with acute myocardial infarction through angiogenesis and myogenesis. *Am J Physiol Heart Circ Physiol.* 2004;287:H2670-2676. Epub 2004 Jul 2629.
24. Tatebe M, Nakamura R, Kagami H, Okada K, Ueda M. Differentiation of transplanted mesenchymal stem cells in a large osteochondral defect in rabbit. *Cytotherapy.* 2005;7:520-530.
25. Im GI, Kim DY, Shin JH, Hyun CW, Cho WH. Repair of cartilage defect in the rabbit with cultured mesenchymal stem cells from bone marrow. *J Bone Joint Surg Br.* 2001;83:289-294.
26. Bensaid W, Oudina K, Viateau V, et al. De novo reconstruction of functional bone by tissue engineering in the metatarsal sheep model. *Tissue Eng.* 2005;11:814-824.
27. Harris CT, Cooper LF. Comparison of bone graft matrices for human mesenchymal stem cell-directed osteogenesis. *J Biomed Mater Res A.* 2004;68:747-755.
28. Horwitz EM, Gordon PL, Koo WK, et al. Isolated allogeneic bone marrow-derived mesenchymal cells engraft and stimulate growth in children with osteogenesis imperfecta: Implications for cell therapy of bone. *Proc Natl Acad Sci U S A.* 2002;99:8932-8937.
29. Kawada H, Fujita J, Kinjo K, et al. Nonhematopoietic mesenchymal stem cells can be mobilized and differentiate into cardiomyocytes after myocardial infarction. *Blood.* 2004;104:3581-3587. Epub 2004 Aug 3585.
30. Van Damme A, Vanden Driessche T, Collen D, Chuah MK. Bone marrow stromal cells as targets for gene therapy. *Curr Gene Ther.* 2002;2:195-209.
31. Kambris Z, Hoffmann JA, Imler JL, Capovilla M. Tissue and stage-specific expression of the Tolls in *Drosophila* embryos. *Gene Expr Patterns.* 2002;2:311-317.
32. Hoebe K, Janssen E, Beutler B. The interface between innate and adaptive immunity. *Nat Immunol.* 2004;5:971-974.
33. Beutler B, Hoebe K, Du X, Ulevitch RJ. How we detect microbes and respond to them: the Toll-like receptors and their transducers. *J Leukoc Biol.* 2003;74:479-485.
34. Beutler B, Jiang Z, Georgel P, et al. Genetic analysis of host resistance: toll-like receptor signaling and immunity at large. *Annu Rev Immunol.* 2006;24:353-389.
35. Gangloff M, Weber AN, Gibbard RJ, Gay NJ. Evolutionary relationships, but functional differences, between the *Drosophila* and human Toll-like receptor families. *Biochem Soc Trans.* 2003;31:659-663.

36. Ferrandon D, Imler JL, Hoffmann JA. Sensing infection in *Drosophila*: Toll and beyond. *Semin Immunol*. 2004;16:43-53.
37. Krieg AM. Antitumor applications of stimulating toll-like receptor 9 with CpG oligodeoxynucleotides. *Curr Oncol Rep*. 2004;6:88-95.
38. Le Bon A, Schiavoni G, D'Agostino G, Gresser I, Belardelli F, Tough DF. Type I interferons potently enhance humoral immunity and can promote isotype switching by stimulating dendritic cells in vivo. *Immunity*. 2001;14:461-470.
39. Le Bon A, Tough DF. Links between innate and adaptive immunity via type I interferon. *Curr Opin Immunol*. 2002;14:432-436.
40. Lund J, Sato A, Akira S, Medzhitov R, Iwasaki A. Toll-like receptor 9-mediated recognition of Herpes simplex virus-2 by plasmacytoid dendritic cells. *J Exp Med*. 2003;198:513-520.
41. Lund JM, Alexopoulou L, Sato A, et al. Recognition of single-stranded RNA viruses by Toll-like receptor 7. *Proc Natl Acad Sci U S A*. 2004;101:5598-5603. Epub 2004 Mar 5519.
42. Meier A, Kirschning CJ, Nikolaus T, Wagner H, Heesemann J, Ebel F. Toll-like receptor (TLR) 2 and TLR4 are essential for *Aspergillus*-induced activation of murine macrophages. *Cell Microbiol*. 2003;5:561-570.
43. Diebold SS, Kaisho T, Hemmi H, Akira S, Reis e Sousa C. Innate antiviral responses by means of TLR7-mediated recognition of single-stranded RNA. *Science*. 2004;303:1529-1531. Epub 2004 Feb 1519.
44. Heil F, Hemmi H, Hochrein H, et al. Species-specific recognition of single-stranded RNA via toll-like receptor 7 and 8. *Science*. 2004;303:1526-1529. Epub 2004 Feb 1519.
45. Hoebe K, Du X, Georgel P, et al. Identification of Lps2 as a key transducer of MyD88-independent TIR signalling. *Nature*. 2003;424:743-748.
46. Honda K, Sakaguchi S, Nakajima C, et al. Selective contribution of IFN-alpha/beta signaling to the maturation of dendritic cells induced by double-stranded RNA or viral infection. *Proc Natl Acad Sci U S A*. 2003;100:10872-10877. Epub 12003 Sep 10805.
47. O'Neill LA. Therapeutic targeting of Toll-like receptors for inflammatory and infectious diseases. *Curr Opin Pharmacol*. 2003;3:396-403.
48. Takeuchi O, Hoshino K, Kawai T, et al. Differential roles of TLR2 and TLR4 in recognition of gram-negative and gram-positive bacterial cell wall components. *Immunity*. 1999;11:443-451.
49. Underhill DM, Ozinsky A, Hajjar AM, et al. The Toll-like receptor 2 is recruited to macrophage phagosomes and discriminates between pathogens. *Nature*. 1999;401:811-815.
50. Cohen-Sfady M, Nussbaum G, Pevsner-Fischer M, et al. Heat shock protein 60 activates B cells via the TLR4-MyD88 pathway. *J Immunol*. 2005;175:3594-3602.
51. Ohashi K, Burkart V, Flohe S, Kolb H. Cutting edge: heat shock protein 60 is a putative endogenous ligand of the toll-like receptor-4 complex. *J Immunol*. 2000;164:558-561.
52. Okamura Y, Watari M, Jerud ES, et al. The extra domain A of fibronectin activates Toll-like receptor 4. *J Biol Chem*. 2001;276:10229-10233. Epub 12001 Jan 10229.

53. Zipori D. The Stem State: Mesenchymal Plasticity as a Paradigm. *Current Stem Cell Research & Therapy*. 2006;1:95-102.
54. Zipori D. The stem state: plasticity is essential, whereas self-renewal and hierarchy are optional. *Stem Cells*. 2005;23:719-726.
55. Quintana FJ, Rotem A, Carmi P, Cohen IR. Vaccination with empty plasmid DNA or CpG oligonucleotide inhibits diabetes in nonobese diabetic mice: modulation of spontaneous 60-kDa heat shock protein autoimmunity. *J Immunol*. 2000;165:6148-6155.
56. Chung NG, Jeong DC, Park SJ, et al. Cotransplantation of marrow stromal cells may prevent lethal graft-versus-host disease in major histocompatibility complex mismatched murine hematopoietic stem cell transplantation. *Int J Hematol*. 2004;80:370-376.
57. Peled A, Zipori D, Abramsky O, Ovadia H, Shezen E. Expression of alpha-smooth muscle actin in murine bone marrow stromal cells. *Blood*. 1991;78:304-309.
58. Beg AA. Endogenous ligands of Toll-like receptors: implications for regulating inflammatory and immune responses. *Trends Immunol*. 2002;23:509-512.
59. Hemmi H, Akira S. TLR signalling and the function of dendritic cells. *Chem Immunol Allergy*. 2005;86:120-135.
60. Kaisho T, Akira S. Toll-like receptors as adjuvant receptors. *Biochim Biophys Acta*. 2002;1589:1-13.
61. Toshchakov V, Jones BW, Lentschat A, et al. TLR2 and TLR4 agonists stimulate unique repertoires of host resistance genes in murine macrophages: interferon-beta-dependent signaling in TLR4-mediated responses. *J Endotoxin Res*. 2003;9:169-175.
62. Moynagh PN. The NF-kappaB pathway. *J Cell Sci*. 2005;118:4589-4592.
63. Kaisho T, Akira S. Dendritic-cell function in Toll-like receptor- and MyD88-knockout mice. *Trends Immunol*. 2001;22:78-83.
64. Yamamoto M, Sato S, Mori K, et al. Cutting edge: a novel Toll/IL-1 receptor domain-containing adapter that preferentially activates the IFN-beta promoter in the Toll-like receptor signaling. *J Immunol*. 2002;169:6668-6672.
65. Kaisho T, Takeuchi O, Kawai T, Hoshino K, Akira S. Endotoxin-induced maturation of MyD88-deficient dendritic cells. *J Immunol*. 2001;166:5688-5694.
66. Nagai Y, Garrett KP, Ohta S, et al. Toll-like receptors on hematopoietic progenitor cells stimulate innate immune system replenishment. *Immunity*. 2006;24:801-812.
67. Cho HH, Bae YC, Jung JS. Role of Toll-like Receptors on Human Adipose-derived Stromal Cells. *Stem Cells*. 2006.
68. Kyburz D, Rethage J, Seibl R, et al. Bacterial peptidoglycans but not CpG oligodeoxynucleotides activate synovial fibroblasts by toll-like receptor signaling. *Arthritis Rheum*. 2003;48:642-650.
69. Akira S, Hirano T, Taga T, Kishimoto T. Biology of multifunctional cytokines: IL 6 and related molecules (IL 1 and TNF). *Faseb J*. 1990;4:2860-2867.
70. Schilling D, Thomas K, Nixdorff K, Vogel SN, Fenton MJ. Toll-like receptor 4 and Toll-IL-1 receptor domain-containing adapter protein (TIRAP)/myeloid differentiation protein 88 adapter-like (Mal) contribute to maximal IL-6 expression in macrophages. *J Immunol*. 2002;169:5874-5880.
71. Diehl S, Chow CW, Weiss L, et al. Induction of NFATc2 expression by interleukin 6 promotes T helper type 2 differentiation. *J Exp Med*. 2002;196:39-49.

72. Hirano T. Interleukin 6 and its receptor: ten years later. *Int Rev Immunol.* 1998;16:249-284.
73. Kovalovich K, Li W, DeAngelis R, Greenbaum LE, Ciliberto G, Taub R. Interleukin-6 protects against Fas-mediated death by establishing a critical level of anti-apoptotic hepatic proteins FLIP, Bcl-2, and Bcl-xL. *J Biol Chem.* 2001;276:26605-26613. Epub 22001 May 26610.
74. Teague TK, Marrack P, Kappler JW, Vella AT. IL-6 rescues resting mouse T cells from apoptosis. *J Immunol.* 1997;158:5791-5796.
75. Nishimoto N, Kishimoto T. Inhibition of IL-6 for the treatment of inflammatory diseases. *Curr Opin Pharmacol.* 2004;4:386-391.
76. Takeuchi O, Sato S, Horiuchi T, et al. Cutting edge: role of Toll-like receptor 1 in mediating immune response to microbial lipoproteins. *J Immunol.* 2002;169:10-14.
77. Ozinsky A, Underhill DM, Fontenot JD, et al. The repertoire for pattern recognition of pathogens by the innate immune system is defined by cooperation between toll-like receptors. *Proc Natl Acad Sci U S A.* 2000;97:13766-13771.
78. Erices A, Conget P, Rojas C, Minguell JJ. Gp130 activation by soluble interleukin-6 receptor/interleukin-6 enhances osteoblastic differentiation of human bone marrow-derived mesenchymal stem cells. *Exp Cell Res.* 2002;280:24-32.
79. Delhalle S, Blasius R, Dicato M, Diederich M. A beginner's guide to NF-kappaB signaling pathways. *Ann N Y Acad Sci.* 2004;1030:1-13.
80. Liang Y, Zhou Y, Shen P. NF-kappaB and its regulation on the immune system. *Cell Mol Immunol.* 2004;1:343-350.
81. Chae GN, Kwak SJ. NF-kappaB is involved in the TNF-alpha induced inhibition of the differentiation of 3T3-L1 cells by reducing PPARgamma expression. *Exp Mol Med.* 2003;35:431-437.
82. Ruan H, Hachohen N, Golub TR, Van Parijs L, Lodish HF. Tumor necrosis factor-alpha suppresses adipocyte-specific genes and activates expression of preadipocyte genes in 3T3-L1 adipocytes: nuclear factor-kappaB activation by TNF-alpha is obligatory. *Diabetes.* 2002;51:1319-1336.
83. Chae HJ, Chae SW, Kim HR. N-acetyl cysteine regulates TNF-alpha-inhibited differentiation in ROS 17/2.8 osteoblasts. *Immunopharmacol Immunotoxicol.* 2004;26:203-213.
84. Bai XC, Lu D, Bai J, et al. Oxidative stress inhibits osteoblastic differentiation of bone cells by ERK and NF-kappaB. *Biochem Biophys Res Commun.* 2004;314:197-207.
85. Sitcheran R, Cogswell PC, Baldwin AS, Jr. NF-kappaB mediates inhibition of mesenchymal cell differentiation through a posttranscriptional gene silencing mechanism. *Genes Dev.* 2003;17:2368-2373.
86. Murphy JM, Dixon K, Beck S, Fabian D, Feldman A, Barry F. Reduced chondrogenic and adipogenic activity of mesenchymal stem cells from patients with advanced osteoarthritis. *Arthritis Rheum.* 2002;46:704-713.
87. Le Blanc K, Rasmusson I, Sundberg B, et al. Treatment of severe acute graft-versus-host disease with third party haploidentical mesenchymal stem cells. *Lancet.* 2004;363:1439-1441.
88. Lazarus HM, Koc ON, Devine SM, et al. Cotransplantation of HLA-identical sibling culture-expanded mesenchymal stem cells and hematopoietic stem cells in hematologic malignancy patients. *Biol Blood Marrow Transplant.* 2005;11:389-398.

89. Bartholomew A, Sturgeon C, Siatskas M, et al. Mesenchymal stem cells suppress lymphocyte proliferation in vitro and prolong skin graft survival in vivo. *Exp Hematol.* 2002;30:42-48.
90. Fouillard L, Bensidhoum M, Bories D, et al. Engraftment of allogeneic mesenchymal stem cells in the bone marrow of a patient with severe idiopathic aplastic anemia improves stroma. *Leukemia.* 2003;17:474-476.
91. Lee ST, Jang JH, Cheong JW, et al. Treatment of high-risk acute myelogenous leukaemia by myeloablative chemoradiotherapy followed by co-infusion of T cell-depleted haematopoietic stem cells and culture-expanded marrow mesenchymal stem cells from a related donor with one fully mismatched human leucocyte antigen haplotype. *Br J Haematol.* 2002;118:1128-1131.
92. Ji JF, He BP, Dheen ST, Tay SS. Interactions of chemokines and chemokine receptors mediate the migration of mesenchymal stem cells to the impaired site in the brain after hypoglossal nerve injury. *Stem Cells.* 2004;22:415-427.
93. Krampera M, Cosmi L, Angeli R, et al. Role for IFN- $\gamma$  in the immunomodulatory activity of human bone marrow mesenchymal stem cells. *Stem Cells.* 2005;25:25.