



מכון  
ויצמן  
למדע

WEIZMANN  
INSTITUTE  
OF SCIENCE

The Miriam and Aaron  
Gutwirth Medical School  
בית הספר לרפואה על שם  
מרים ואהרון גוטוורט

WEIZMANN מכון  
ויצמן SCHOOL OF  
SCIENCE למדע ::::

# Weizmann School of Medicine

## Open Day 2025

**Ayelet Erez MD PhD**  
**Dean**

# OUR MISSION FOR TODAY

**To inspire you to join us as partners  
in our journey by:**

- **Sharing our vision with you**
- **Informing you about the new medical school at the Weizmann**
- **Introducing our team**
- **Giving you a taste of the Weizmann**

# PATIENT #0

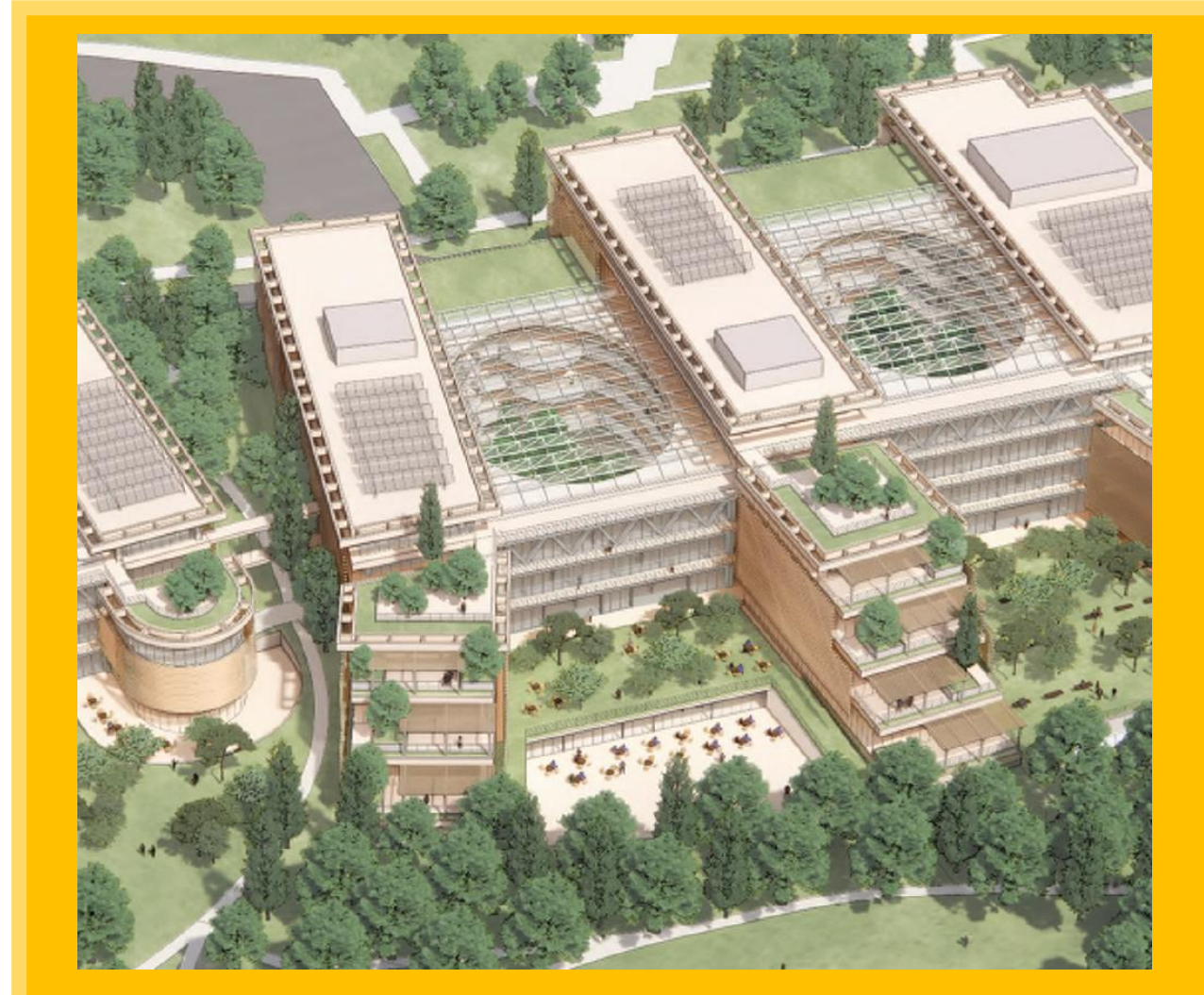
Who?



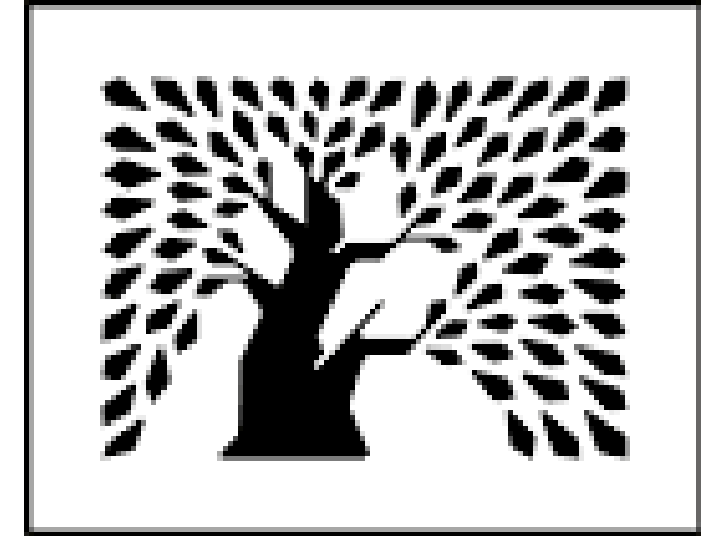


# BRIDGING THE GAP

**LEADERS IN MEDICAL  
HOSPITALS IN ISRAEL  
AND ABROAD**



**Weizmann School of Medicine**



**Medicine**

**Research**

# THE NEED

**Why?**



**POPULATION  
IS AGING**



**VARYING  
RESPONSE**



**PERSONALIZED  
MEDICINE**



**DATA IS  
EVOLVING**



**ACCESS TO  
RESEARCH**

# THE GOAL



## Leaders...

- Who excel in patient care
- Who drive global advancements in medical science
- Who embody a holistic understanding of disease mechanisms and novel therapeutic strategies



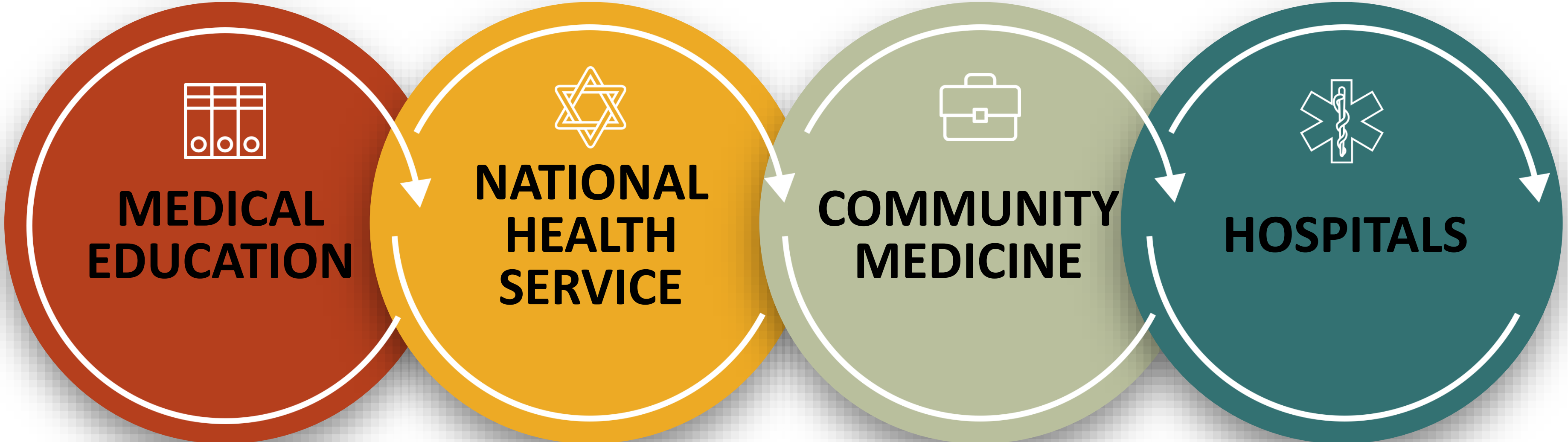
# THE VISION

**Once a week researcher**

**Once a week physician**



# THE BIGGER PICTURE





**How?**

# THE OUTLINE

Medical-Rese



Medical-Research Education



Registration  
and  
admission

**0**



Preparatory  
Studies

3 weeks

**01**



Healthy  
body  
systems

1 year  
(3  
semesters)

**02**



Thesis /  
PhD

4 ¼ years

**03**



Sick body  
systems

½ year  
(24 weeks)

**04**



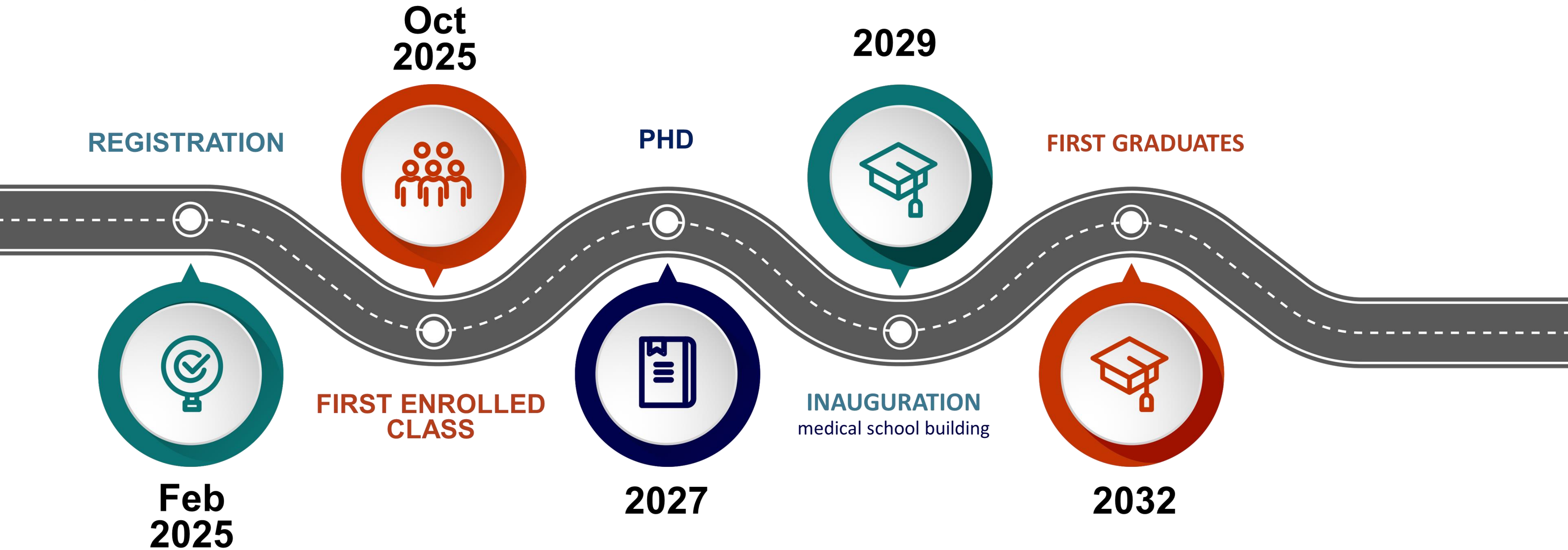
Clinical  
clerkships

1¾ year

**05**

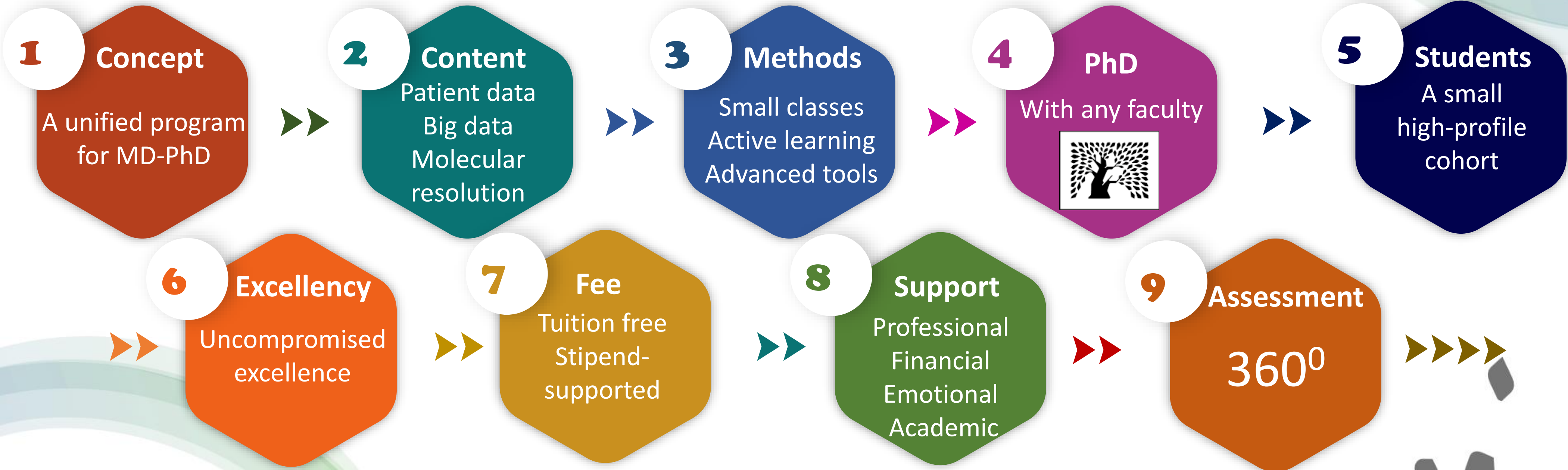


# THE ROADMAP



What?

# THE UNIQUENESS OF OUR PROGRAM





# THE PEOPLE



**Medical School Dean**  
Prof. Ayelet Erez

**Accompanying Dean**  
Prof. Iris Barshack



**Senior Associate to Dean and Head of the Medical School**  
Prof. Liran Shlush



**Head of MD-PhD Branch**  
Michal Raviv-Reisman

**Associate Dean for Preclinical Studies**  
Prof. Asaf Vivante



**Head of PhD program and Evaluation Committee**  
Prof. Avraham Yaron

**Projects Manager**  
Erez Lazarof



**Course Leaders**

**Head Admis Comm**  
Prof. R Strauss



מרכז רפואי רבין  
בית חולים בילינסון

- (MD)
- Internists X3 (MD)
- Pediatrician X2 (MD)



**Head of Admission and Clinical Studies**  
Eti Colb-Ozana



**Head of Administration**  
Shirley Kaveh-Shtul



**Head of Evaluation and Student Affairs**  
Shiran Hemou



**Head of Courses, Teaching and Research Methods**  
Moshe Kafri

**Head of Data Science Tools**  
Rami Jaschek



**Head of Pedagogy**  
Adi Kidron



**Physician Assistant and Hospitals Coordinator**

**Admission Coordinator**  
Adi Zehavi



**IT, Organization and Methods Referent**  
Yinon Lajos



**Maintenance and Logistics Coordinator**

**Administrative Coordinator**  
Sarit Naccache



**Budget Assistant**  
Rachel Hananya



**Medical Education Coordinator**  
Olga Kofman



**Courses Coordinator**  
Ronnie Rosen



**Data Science Tools Coordinator**  
Noa Chapal Ilani  
Amit Blumberg  
Amit Shraga

**Teaching and Assessment Technologies Coordinator**



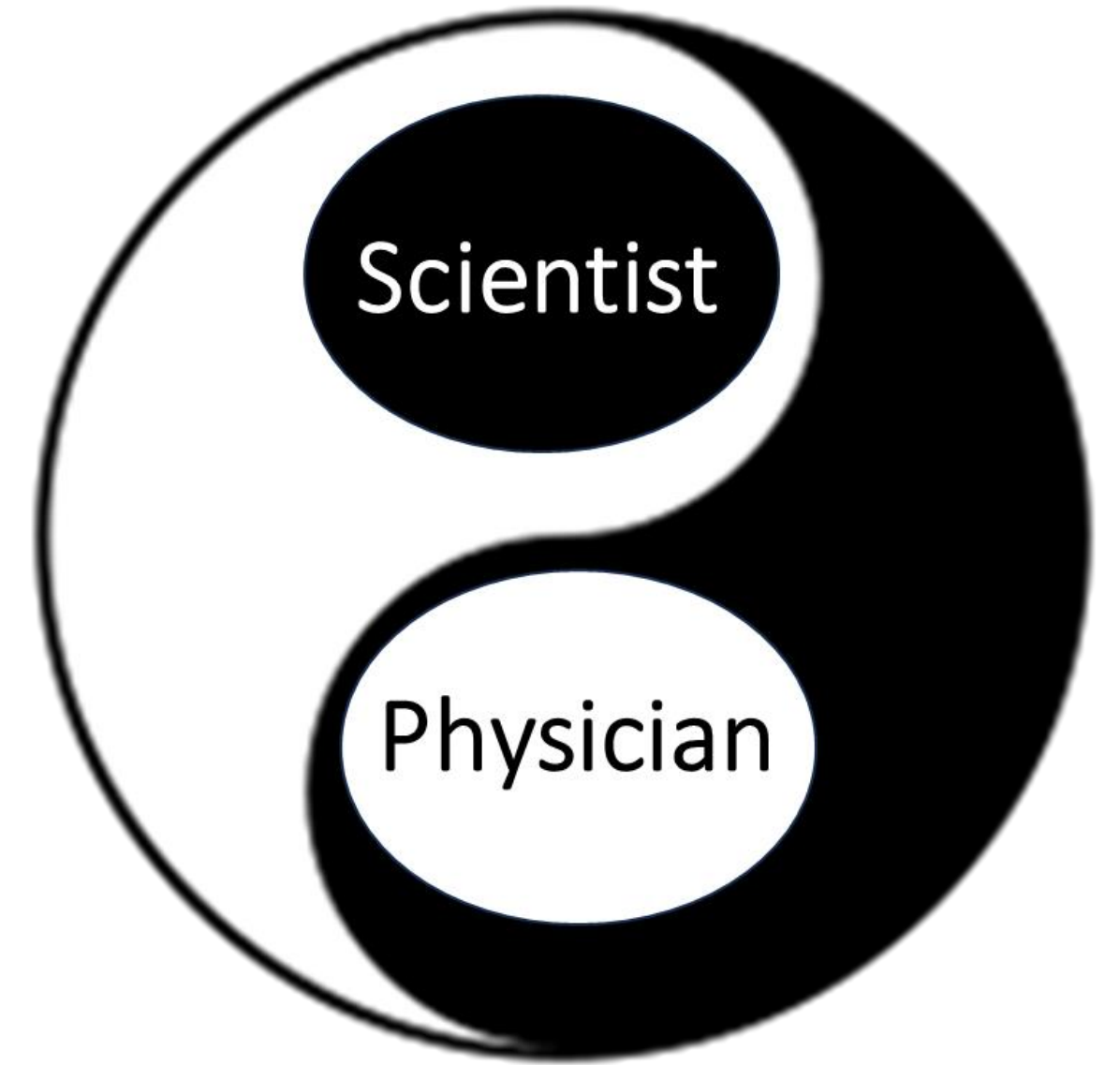
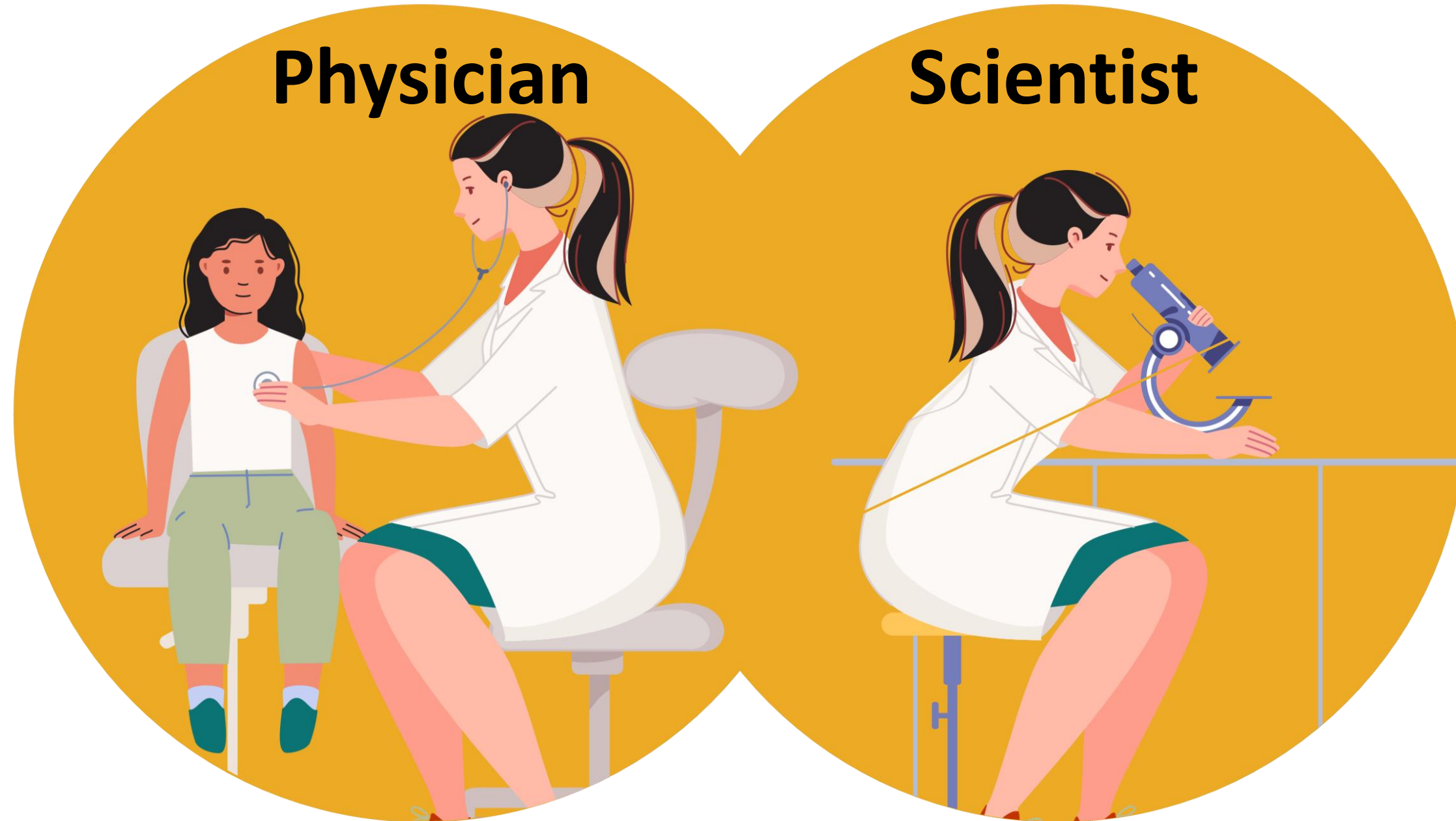
**Simulation Coordinator**



**Computers and Support Coordinator (IT)**



# The take home message



$$1 + 1 = 3$$

**The whole is larger than the sum of its parts**



# הזמנה לשותפות

## אתם:

- תהיו **ALL IN**
- תהוו **חלק אקטיבי**
- **מקהילה לומדת ומתנסה**
- **תשפיעו על רופאי-חוקרי העתיד, על הקהילה וכמובן עלינו**



## אנחנו:

- **נידאג למרצים מצויינים**
- **תחושת שותפות ושייכות**
- **נלמד בשיטות חדשניות**
- **ניתן גישה לחזית הרפואה והמדע**
- **נעזור ככל האפשר על מנת שתצליחו**





מכון  
ויצמן  
למדע

WEIZMANN  
INSTITUTE  
OF SCIENCE

The Miriam and Aaron  
Gutwirth Medical School  
בית הספר לרפואה על שם  
מרים ואהרון גוטוורט



**THANK YOU**

תודה!