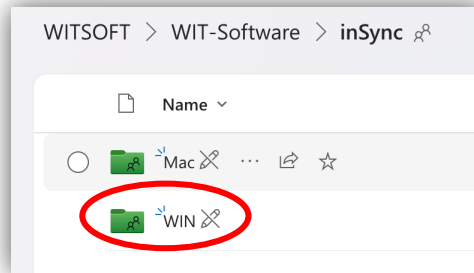


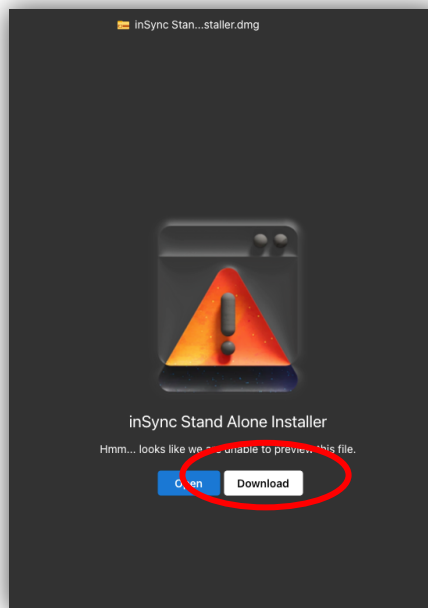
## Setup inSync Backup Manually – Windows

To install inSync on your Windows 10/11 computer follow these steps:

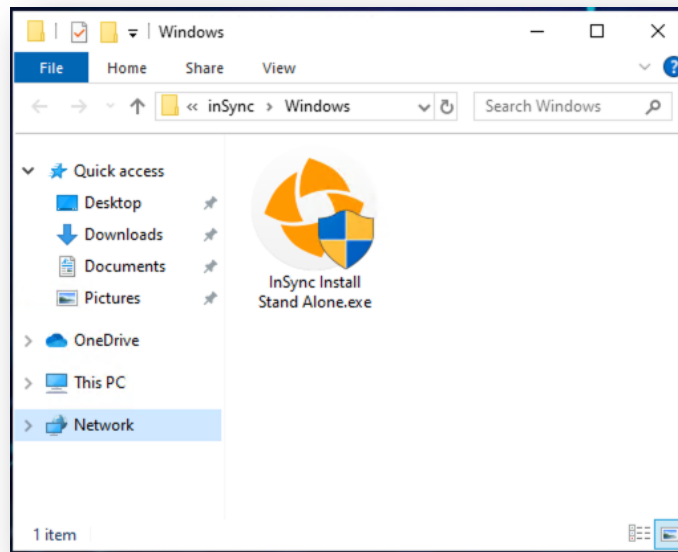
1. **The installer will work only on Weizmann campus LAN network, or VPN!**
2. To get the installer, go to: [Link to installer](#)
3. Login with Weizmann Username/Password, open the “inSync” folder.
4. Open the “WIN” folder:



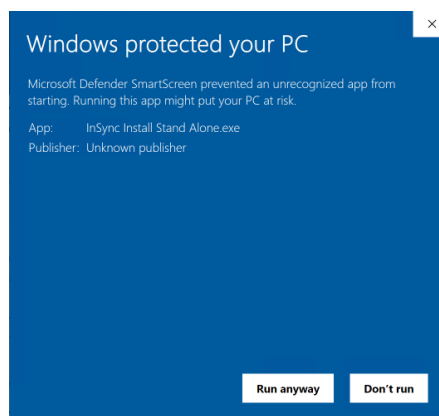
5. Click on the file “InSync Install Stand Alone.exe”, and click download on the website:



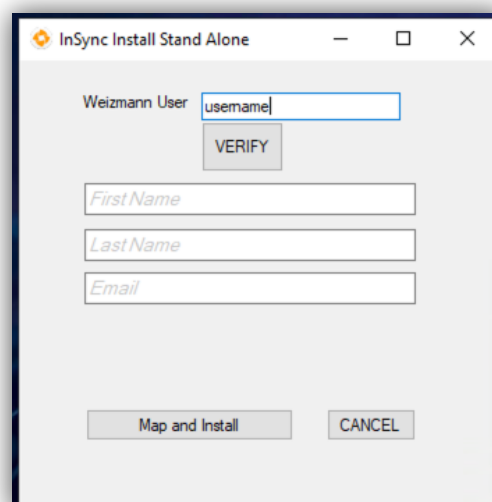
6. Find the installer in your Downloads folder, and open the file “InSync Install Stand Alone.exe”



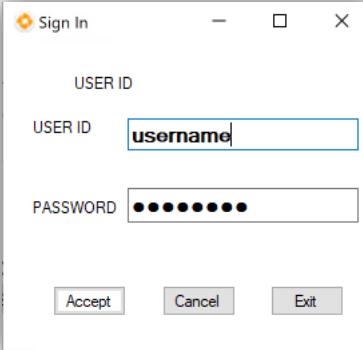
7. Approve the security warnings if requested:



8. Enter the username for the user you want to setup the backup for and click “VERIFY”.

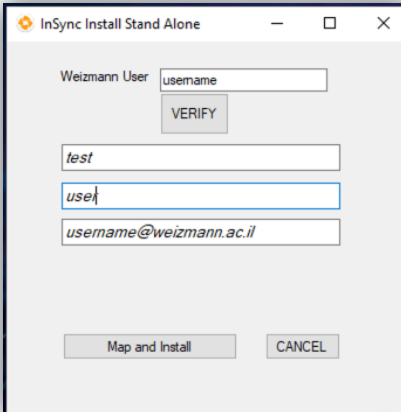


9. Enter the user's password on the pop-up window. If the username isn't entered correctly, enter the username again:



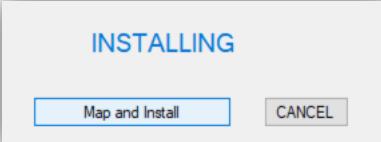
A "Sign In" dialog box with a title bar containing a gear icon, the text "Sign In", and standard window controls. It contains two input fields: "USER ID" with the text "username" and "PASSWORD" with masked characters (dots). Below the fields are three buttons: "Accept", "Cancel", and "Exit".

10. You should see the details of the user in the window. If all is correct, click the "Map and Install" button:



An "InSync Install Stand Alone" dialog box with a title bar containing a gear icon, the text "InSync Install Stand Alone", and standard window controls. It contains a "Weizmann User" field with the text "username" and a "VERIFY" button. Below these are three text fields containing "test", "use", and "username@weizmann.ac.il". At the bottom are two buttons: "Map and Install" and "CANCEL".

11. The installation process should begin, approve the security notification and the windows will close after a few seconds:



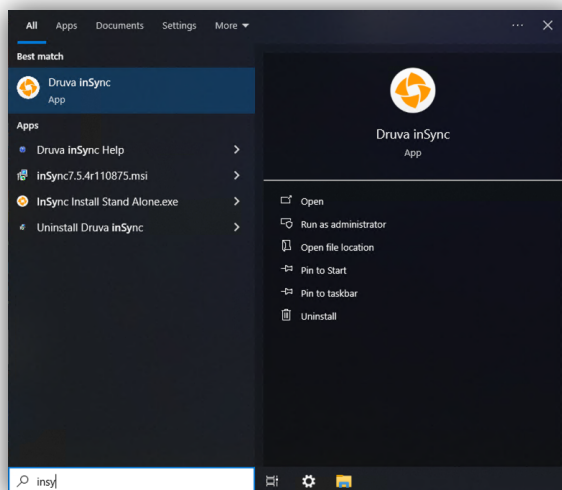
An "INSTALLING" dialog box with a title bar containing the text "INSTALLING" in blue. It contains two buttons: "Map and Install" and "CANCEL".

12. The installation could take 5-10 minutes.

13. The backup process will now start, you can open the app from the bottom tray:



14. Or the start menu by opening “Druva inSync.app”:



15. You can see the backup process and check the logs:

