

January 2026



WEIZMANN מכון
ויצמן SCHOOL OF
SCIENCE למדע ::::

Information Booklet for Students and Postdoctoral Fellows

Weizmann School of Science



Follow us



For more information: [Weizmann School of Science Website](https://www.weizmann.ac.il/science)

Introduction



Warm congratulations on joining the Weizmann School of Science!

The Weizmann Institute is among the world's leading institutions in the natural and exact sciences.

Your path to research and learning begins here with true scientific freedom, in an innovative, thriving environment and an international community.

The Institute is consistently ranked among the best research institutions worldwide and will open the door for you to research and grow with world-leading scientists. We believe that alongside research, the Institute's mission is to train the next generation that will stand at the forefront of global science.

The Weizmann School of Science (WSoS) is the academic arm of the Institute and offers MSc and PhD programs, postdoctoral training, and a unique MD-PhD track, all within a world-class scientific setting.

Most programs are taught in English, in a collaborative and respectful atmosphere. Students and postdoctoral fellows receive a full tuition waiver, a monthly stipend, and broad support - including welfare services, health care, and community life.

We are here for you every step of the way. You can [contact us](#) by email, phone, or on campus - our door is always open :)

Good luck and enjoy the journey!

The Weizmann School of Science Team

Message from the Dean

Congratulations on joining the Weizmann School of Science, where your professional future will begin to take shape and where you will develop the scientific skills that define outstanding researchers: curiosity, boldness, creativity, critical thinking, integrity, scientific communication, resilience under pressure, and, no less important, teamwork.

I hope this place will soon become your second home, and I wish you many years filled with meaningful experiences and friendships that will last a lifetime. You have an exceptional opportunity to draw on the human capital around you for deep and meaningful learning, both in courses and laboratories, and, equally, in peer discussions, seminars, and professional collaborations.

As in any home and any family, I also expect personal responsibility throughout your time here. First and foremost, this means caring for your physical and mental well-being. Alongside this, it means caring for your surroundings, while actively being an integral part of a community that values diversity, inclusion, tolerance, generosity, compassion, sustainability, and peace.

Your remarkable journey begins now, and it promises to be exciting. Yet exploring the unknown and seeking discoveries that have not yet been made inevitably involves challenges and obstacles along the way.

As those who stand at the forefront of global science, part of our task is to learn how to confront setbacks, grow from them, and continue forward. After all, if it were easy, it would already have been done.

I am here for you, in the good moments, as well as when the path becomes more challenging. In the Institute's spirit of excellence and innovation, my door is always open to hear how we can improve your learning and supervision journey.

I am excited for you, wish you a fascinating, challenging, and enjoyable academic experience, and look forward to seeing you along the beautiful paths of the Institute.

Best of luck in finding your scientific and personal path,

Prof. Maya Schuldiner

Dean, Weizmann School of Science



**Boundless Science,
Extraordinary Futures**



Message from the Manager and Academic Secretary

I am delighted to congratulate you on joining the Weizmann School of Science.

Whether you have joined the Institute for advanced studies, the MD-PhD Program, or postdoctoral research, you are now part of a diverse, collaborative, and supportive community that thrives on curiosity and believes that science can change reality.

Here you will meet leading researchers who will engage with you as peers, exchange ideas, and open doors to new worlds of groundbreaking research.

Our teaching and research environment offers innovative methods, a safe and inclusive space, and a professional and personal support framework that includes individual and emotional guidance as needed. We hope your time here brings not only scientific discoveries but also personal development, a sense of belonging, and the tools and collaborations that will serve you in the future.

Our team is here to help you focus on your studies and research. We work to provide the conditions for academic and scientific growth and fulfillment.

In this booklet you will find everything you need to begin with confidence: practical tools, key contacts, and guidance for both your work in the lab and your personal life.

Please remember that we're here for you and encourage you to contact us with any question or request.

I wish you a fascinating, meaningful, and inspiring journey.

Gili Vainer

Manager and Academic Secretary
Weizmann School of Science



Table of Contents

05	<u>The Weizmann School of Science</u>
06	<u>First Steps on Campus</u>
07	<u>Accessing Institute Services</u>
08	<u>Remote Connection to WIS Network</u>
09	<u>The Students Portal</u>
10	<u>Student Portal Application</u>
11	<u>The Code of Ethics</u>
12	<u>Safe & Supportive Environment at WIS</u>
13	<u>Stipends and Financial Support</u>
15	<u>Additional Financial Support</u>
16	<u>Students & Postdocs Wellbeing Officer</u>
17	<u>Rights and Benefits</u>
18	<u>Family Support</u>
19	<u>Campus Services</u>
20	<u>Women in Science & Diversity Office</u>
21	<u>The International Office</u>
22	<u>Attendance and Absence Reports</u>
25	<u>Useful Links</u>
26	<u>Useful Phones Numbers & Service Centers</u>



The information in this booklet is accurate at the time of publication but may be updated from time to time. It is intended to provide general guidance only. In the event of any discrepancy, the information on the Weizmann School of Science website and the Institute's regulations will apply. This booklet is for internal use only and is not for distribution.



The Weizmann School of Science

The Weizmann Institute of Science has five faculties: Chemistry, Physics, Biochemistry, Biology, Mathematics & Computer Science, and in addition, two independent departments: Science Teaching and Scientific Archaeology.

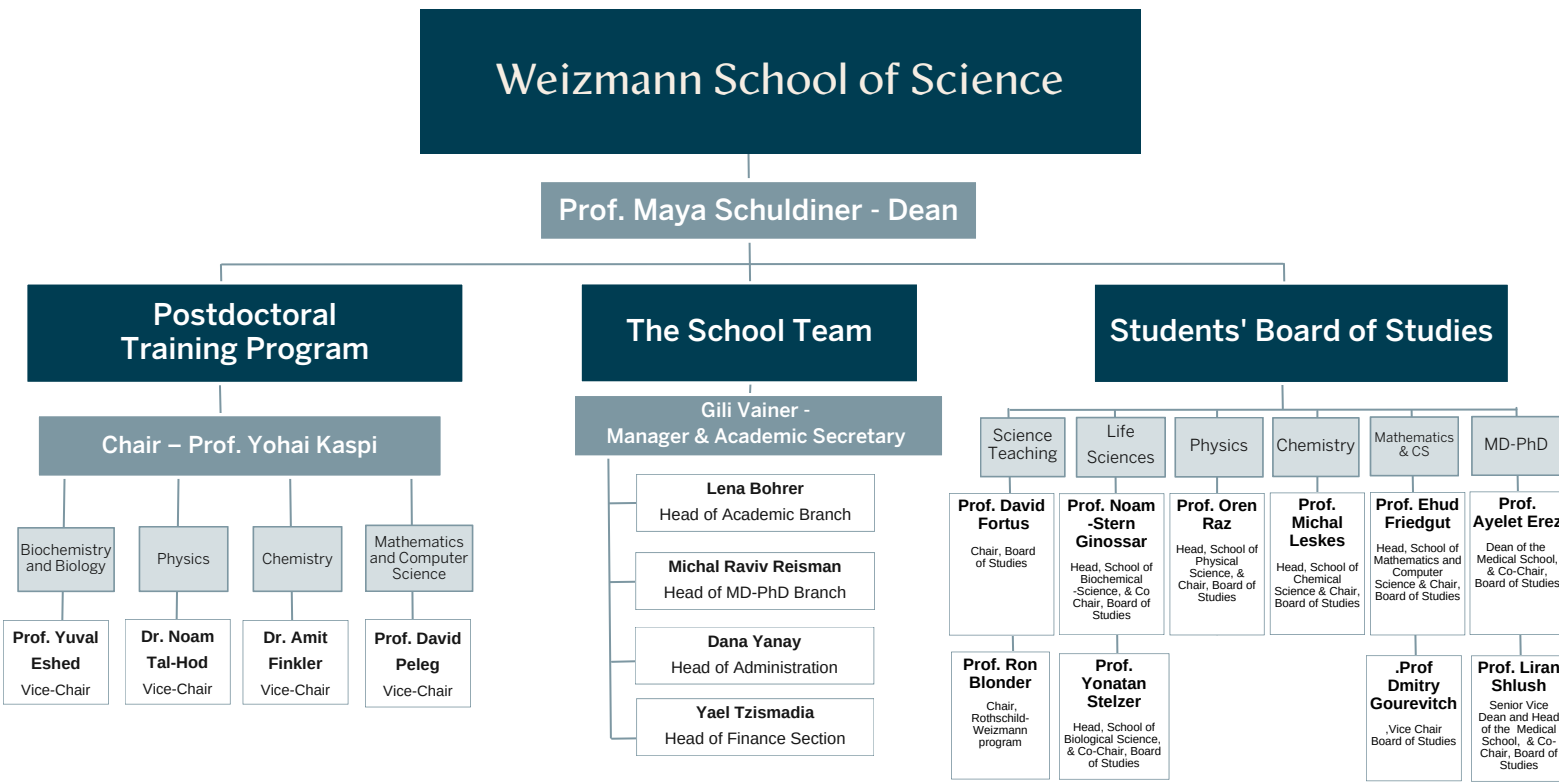
The Weizmann School of Science, the Institute’s academic arm, is responsible for all aspects concerning students and postdocs and operates as a one-stop shop for academic and administrative needs.

It includes six schools: Chemical Science, Physics, Biochemistry, Biology, Mathematics & Computer Science, and Medical School (which function through the Board of Studies in Chemistry, Physics, Life Sciences, Mathematics & Computer Science, MD-PhD, and Science Teaching, as outlined in the structure overview below).

A postdoctoral training program also operates within the School.

The School is led by the Dean, Prof. Maya Schuldiner, together with the Manager and Academic Secretary, Ms. Gili Vainer. The Dean chairs the Steering Committee, which includes the school heads and chairs of the boards of studies, branch heads, and the Head of the Office of Diversity and Inclusion, Dr. Meytal Jona Eran.

Locating Role-Holders at the Weizmann School of Science



First Steps on Campus

Let's get started!

There are a few important steps you should complete during your first weeks on campus, so you can focus fully on your studies and research.

Here you'll find the tasks that will help you settle in quickly. Check them off and let your curiosity guide you forward.

✿ Obtain your user account, register for the Institute network, and open your Institute email.

✿ Update personal details and emergency contacts in Selfie HR.

✿ Collect your permanent Institute card and vehicle authorization.

✿ Register for the subsidized Eat & Go meal service.

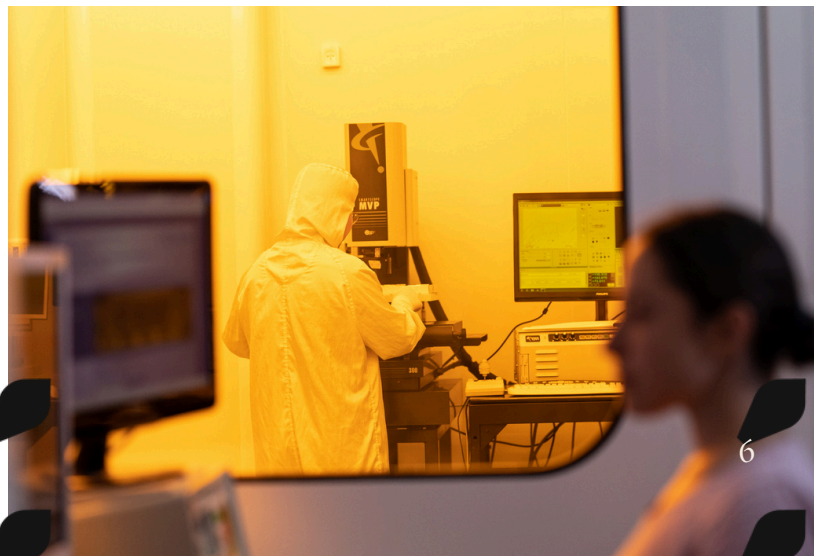
✿ Read the Weizmann Institute Code of Ethics and WSoS's procedures.

✿ Complete safety training with the Safety Unit.

✿ Complete the online sexual-harassment prevention training.

✿ Complete administrative and medical forms sent by email.

✿ Take part in the Weizmann School of Science orientation days (details will be sent separately).





Getting Connected: Accessing Institute Services

Upon arrival, a personal account with a username and password will be created for you. This account provides access to your Institute email and all Institute digital services throughout your time here.

All official messages about your time at the Institute, studies and research will be sent to your Institute email, so please set it up immediately.

How do I get my account details?

The details will be sent to the email address used for your application and via text message to the phone number you provided.

If you didn't receive the account details:

MSc Studies: Contact the Weizmann School of Science support.

MD-PhD Program: Contact the Medical School support.

Other programs: Contact your departmental administration. Contact details here.

Log in to your Institute email

Log in to WSoS Moodle

(You can also access the above via the side menu on the WSoS website)





Remote Connection to the Weizmann Network

To access the Student Portal and other services **while on campus**, please connect to the secure Institute network.

MSc students: connect via WIS-hotspot using Master VPN.

See instructions for Master VPN connection

PhD students, postdocs, and medical students: connect only via WIS Secure after registering with your departmental administration.

For further details, see Network Services page in Weizmann-IT website

Outside the Institute, you must connect using remote access via VPN. VPN access is provided through the F5 client, which enables access to most Institute apps, software, and services.

To install the F5 client, follow the step-by-step instructions according to your computer's operating system:

For further details, see F5 VPN Client guides in Weizmann-IT website

Additional information is available on the Weizmann-IT website

For assistance, you can contact the Service Desk



The Students Portal



Everything in One Place.

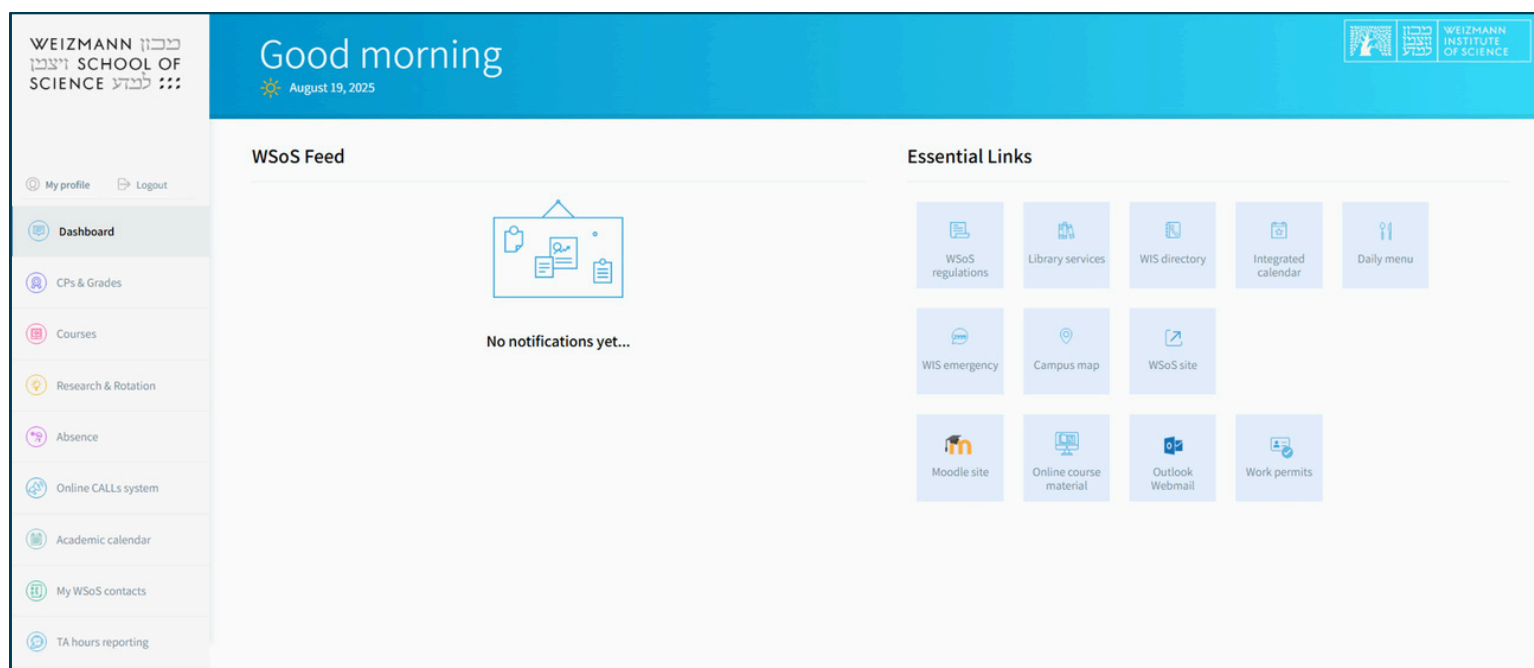
The Student Portal is your hub for managing academic life, allowing quick access to academic and personal services.

You can:

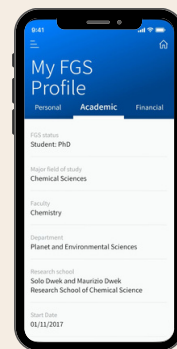
- View grades
- Register for rotations
- Report presence and absence
- Access the CALLS system
- View the academic calendar
- Generate academic certificates
- Register and evaluate courses
- Find relevant contacts in WIS
- Report teaching-assistant hours
- Submit requests for work approvals (internal or external)
- Update personal details
- View stipend payslips
- Sign the Intellectual Property form

Student Portal Login

(You can also click **POSTDOCS & STUDENTS** in the top menu of the WSoS website)



Student Portal Application



You can also access the student portal via the Weizmann School of Science app. Log in with your Institute account; no secure network connection is needed.

Important: Some web-portal services are not available in the app.



Install App:

[Apple Store](#)



[Google Play](#)



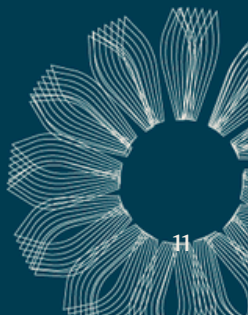
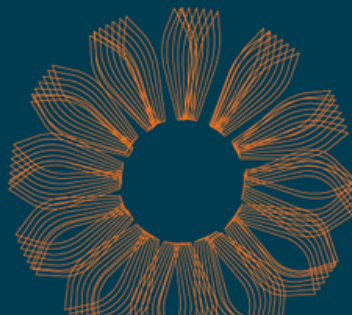
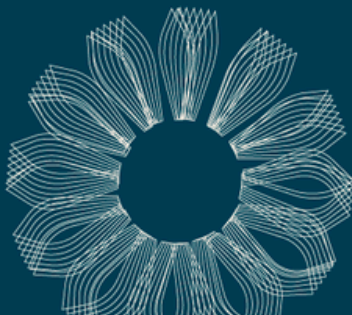
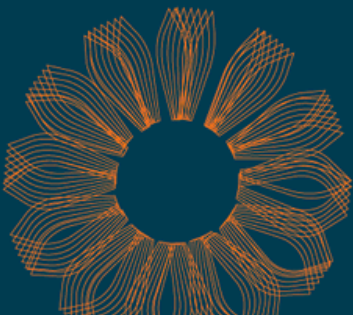
[For further information on logging in to the WSoS app](#)



Community Values and Guidelines at the Weizmann Institute of Science

The Weizmann Institute Code of Ethics instills academic integrity, moral responsibility, and proper conduct. It encourages a climate of trust and mutual respect and requires adherence to high ethical standards as an integral part of being a member of the Institute community. Breaches may result in disciplinary action.

[Read the Weizmann Institute of Science Code of Ethics](#)
[Read the Weizmann School of Science Code of Ethics & Regulations](#)





Safe & Supportive Environment – The Key to Outstanding Research

At the Weizmann Institute of Science, we strive to create a safe, respectful, and professional environment for study and research, for the benefit of the entire Institute community. The Institute has zero tolerance for harassment, discrimination, or harm based on gender, religion, nationality, or any other identity. Every report regarding this issue is taken seriously, and there is a clear and discreet support system in place to handle relevant cases.

Prevention of Sexual Harassment

Sexual harassment of any kind harms people and our shared space. At the Weizmann Institute, mutual respect is non-negotiable. We are here to listen, support, and act with sensitivity, discretion, and determination. If you experience or witness an incident that requires attention, it's important not to keep it to yourself. There are people you can talk to, and there are people who will listen and take action.

[For Further information and reporting options](#)
[Procedure for Prevention of Sexual Harassment](#)

Prevention of Bullying and Abusive Conduct

The Weizmann Institute of Science and the Weizmann School of Science are committed to providing a respectful academic and research environment, free of bullying or abusive behavior. We maintain clear procedures and a strict zero-tolerance policy in this matter.

[For further information on preventing abusive conduct and reporting options](#)

Student Ombudsperson

The Ombudsperson is responsible for handling complaints submitted by applicants, students, and postdocs regarding academic or personal administrative matters, when the complainant believes that their issue was not properly addressed by the relevant Institute authorities.

[Contact the Students and Postdocs Ombudsperson](#)



Stipends and Financial Support

The Weizmann Institute of Science provides financial support so you can focus on what matters most - Science.

- Stipends are paid at the beginning of each month directly to your bank account.
- Payslips (Hebrew and English) are sent to your Institute email.
- Stipends are tax-exempt.
- Israeli residents must arrange National Insurance payments independently.
- Students and postdocs are covered by National Insurance vocational training insurance for injuries during scientific activity (equivalent to a work accident).

Stipend amounts by status:

Degree Type	Basic Stipend Amount	More on Stipend
MSc	7,000 NIS	More on MSc stipends
MSc (non-thesis)	2,604 NIS	More on the Rothschild-Weizmann Program
PhD	9,000 NIS	More on PhD stipends
Postdoc	11,500 NIS	More on postdoc stipends
MD-PhD	9,000 NIS – until completion of pre-clinical studies and PhD requirements 11,500 NIS – after official confirmation of PhD completion	More on School of Medicine stipends

Note: Stipend amounts may change for recipients of competitive scholarships.

Stipends and Financial Support

Example of a stipend payslip:

Personal details

Fellowship payment notification

7/2025

הודעה על תשלום מלגה

שם:	Israel Israeli	ישראל ישראלי	
מעמד:	FGS status: PhD Student	דוקטורנט	
ת.ז. / דרכון:	ID # / Passport #: 123456789	123456789	
סמ' תיק:	File #: 12345	12345	
התחלת המעמד:	Status start date: 14/09/2024	14/09/2024	
מחלקה:	Department: Department of Systems Immunology	המחלקה לאימונולוגיה מערכתית	

Israeli bank account details

Fellowship for: 7/2025

7 /2025

חודש המלגה:

שם בנק/מס':	Bank #: 12	12	
מס' סניף:	Branch #: 123	123	
מס' חשבון:	Account #: 123456	123456	

Institute details

Institution: WEIZMANN INSTITUTE OF SCIENCE

מכון ויצמן למדע

מוסד:

כתובת:	Address: P.O. Box 26, REHOVOT, Israel, 76100	ת.ד. 26, רחובות, 76100	
תיק ניכויים:	Deductions file: 926003542	926003542	
חברה:	Firm #: 520016858	520016858	
כרטיס הנה"ח:	Accounting #: 1234567890	1234567890	
הוראת תשלום:	Payment order: 123456	123456	
רשימה:	List #: 456789	456789	

Payments

Payment type (NIS)

סוג תשלום (בש"ח)

Fellowship Payment	9,000.00		מלגה
Total payments:	9,000.00		סה"כ תשלומים:

Deductions

Payment type (NIS)

סוג ניכוי (בש"ח)

Meals	72.82		ארוחות
Total deductions:	72.82		סה"כ ניכויים:

Total payment (NIS):

8,927.18

סה"כ לתשלום (בש"ח):

Israeli citizens who are students must arrange themselves their monthly payments to the National Insurance Institute. These payments are obligatory by law.

עפ"י חוק, על אזרחי מדינת ישראל, שהינם תלמידים, להסדיר בעצמם את תשלומי הביטוח הלאומי וביטוח הבראות החודשיים ישירות מול המוסד לביטוח לאומי.

****The meal deduction shown on the stipend payslip, covers meals taken between the 16th of the previous month to the 15th of the current month**

For further explanation regarding the stipend payslip, you can contact the Fellowship and HR team at the Weizmann School of Science.



Additional Financial Support Options

Emotional and psychological support

The Institute offers 30 subsidized therapy sessions with licensed clinical therapists, coordinated with the Dean of Students and approved by the social worker.

For more info: [Personal Counseling Services at the Weizmann School of Science](#)

Travel budget (PhD and Postdocs)

As part of your studies at the Institute, you are entitled to a travel allowance for international conferences and courses. Registration requires submitting a request in advance via the 'Tafnit' system and is subject to approval by your research group head and the Weizmann School of Science.

[For further information on PhD travel budget](#)

[For further information on postdoc travel budget](#)

Calls for Excellence Scholarships and Financial Aid

Excellence Scholarships and financial aid scholarships are periodically published via the Calls system. We recommend following these announcements through the [Student Portal](#).

Loans

The Weizmann School of Science offers students and postdocs the option to apply for an interest-free, non-indexed loan, subject to the [Loans Procedure](#).

Personal Guidance & Support at WSoS



Students and Postdocs Wellbeing Officer

The Students and Postdocs Wellbeing Officer oversees the welfare of students and postdocs at the Weizmann Institute of Science.

The Students and Postdocs Wellbeing Officer provides a wide range of services:

PERSONAL SUPPORT

Providing personal emotional support, referrals to psychological services when needed, and partial funding for psychological treatments.

FINANCIAL ASSISTANCE

Handling requests for ongoing or urgent financial aid, including calls for scholarships and loans.

ACADEMIC ACCOMMODATIONS

Support for students with learning disabilities in submitting requests for accommodations and adjustments.

MILITARY RESERVE DUTY

Support for reservists, their spouses, and students or postdocs whose partners are reservists.

ACCESSIBILITY ACCOMMODATIONS

Individual support and accommodations for students with disabilities.

For further information: [Accessibility at the Weizmann Institute](#).

WORK AUTHORIZATIONS

Guidance and support in the process of obtaining approval to work at or outside the Institute, according to the regulations.

EXCEPTIONAL HOUSING REQUESTS

Handling special housing requests and forwarding them to the Exceptions Committee.

INJURY DURING VOCATIONAL TRAINING (WORK ACCIDENT)

Emotional and practical support in cases of medical injury or work accidents, including assistance with claims.



For further information and contact details:
[Personal Counseling at WSoS](#)



Rights and Benefits

Restaurants and Meals

Through the Eat & Go service, the Weizmann Institute of Science enables you to enjoy subsidized meals and discounts at campus restaurants, payable with the student card or via the Cibus app.

For more info: [Eat & Go website](#)

Fitness Center

The Fitness Center was established for the benefit of the entire Institute community, recognizing the importance of physical activity for maintaining health. Students and postdocs are eligible for favorable terms.

For more info: [Fitness Center](#)

Recreation Center

The Institute offers individual, couple, or family memberships at the Recreation Center under favorable terms. The center includes four pools: a summer pool, two toddler pools, and an indoor pool open year-round. It also features a gym, sauna, ping-pong tables, tennis courts, soccer and basketball fields, and a wide range of classes.

For more info: [Recreation Center](#)

Public Transportation Discounts

To receive a discount on your Rav-Kav (public transit card), request a designated sticker from your departmental administrative coordinator or from the office responsible for issuing Institute cards.

For more info: [Student / Fellow card](#)

Health Insurance for International Students

All international students and postdocs are required to have health insurance.

For further information, visit the Weizmann School of Science: [Health Insurance for Internationals](#) and/or contact the International Office: io@weizmann.ac.il

Relocation Expenses Reimbursement for Postdocs

International postdocs are eligible for reimbursement of relocation expenses, in accordance with Institute policy. For more info: [Relocation Expenses](#)



Family Support

Pregnancy and Birth

The School promotes equal opportunities and supports all students and postdocs on matters of parenting and family.

For more info: [Rights Guide for Pregnancy, Birth, and Postpartum](#)

Parental Leave

A parent (not on maternity leave) is entitled to up to 14 consecutive days of special paid leave starting from the day of the child's birth.

For more info: [Rights Guide for Pregnancy, Birth, and Postpartum](#)

Childcare Subsidy

The Institute provides a monthly subsidy of 425 NIS for students and postdocs with children aged 4–36 months. Please note: this benefit does not apply to students in the non-thesis MSc program (“Rothschild-Weizmann”).

For more info: [Childcare Subsidy](#)

Daycare and After-school Programs

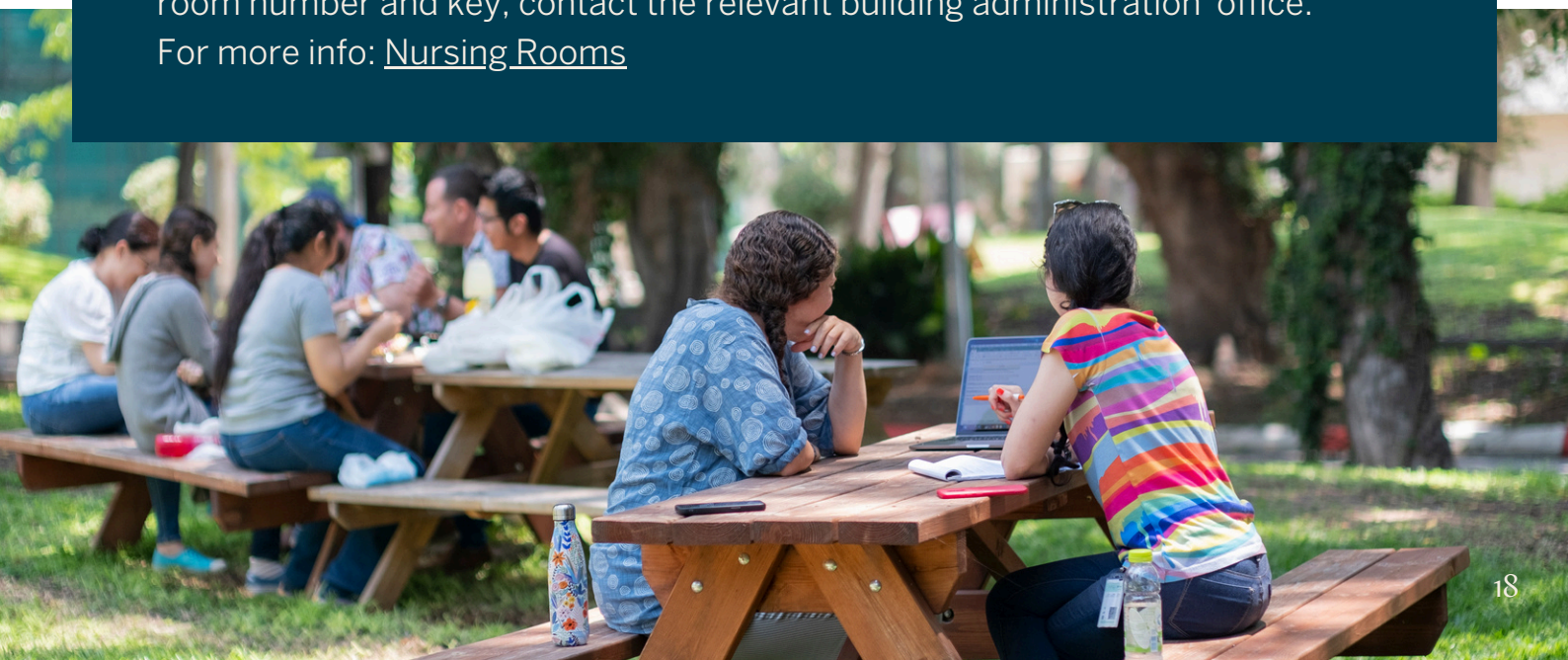
The Institute operates an early-childhood education center run by WIZO.

For more info and eligibility: [Daycare and Afterschool Programs](#)

Nursing Rooms

Private, comfortable nursing rooms are located across campus. To receive the room number and key, contact the relevant building administration office.

For more info: [Nursing Rooms](#)



Campus Services

Students and Postdocs' Council

At the Weizmann Institute, all students support each other, in every subject and across all faculties. The Council is a volunteer body that represents you, promotes welfare, and organizes activities and clubs. We invite you to join, participate, and make an impact.

For more info: [Students' Council](#)

Parking

As a student, you may enter campus with a private car and park on site. Please make sure to follow the rules and park only in designated areas.

For the Driving and Parking Policy and information on obtaining an entry and parking permit: [Policies and Procedures](#)

Art and Culture at Sela

The cultural center of the Weizmann Institute of Science. The center operates year-round, hosting performances, lectures, film screenings, classes, and workshops. Activities are open to the entire Institute community and include spaces for independent activity or community initiatives.

For more info: [Art & Culture at Sela](#)

Davidson Institute of Science Education

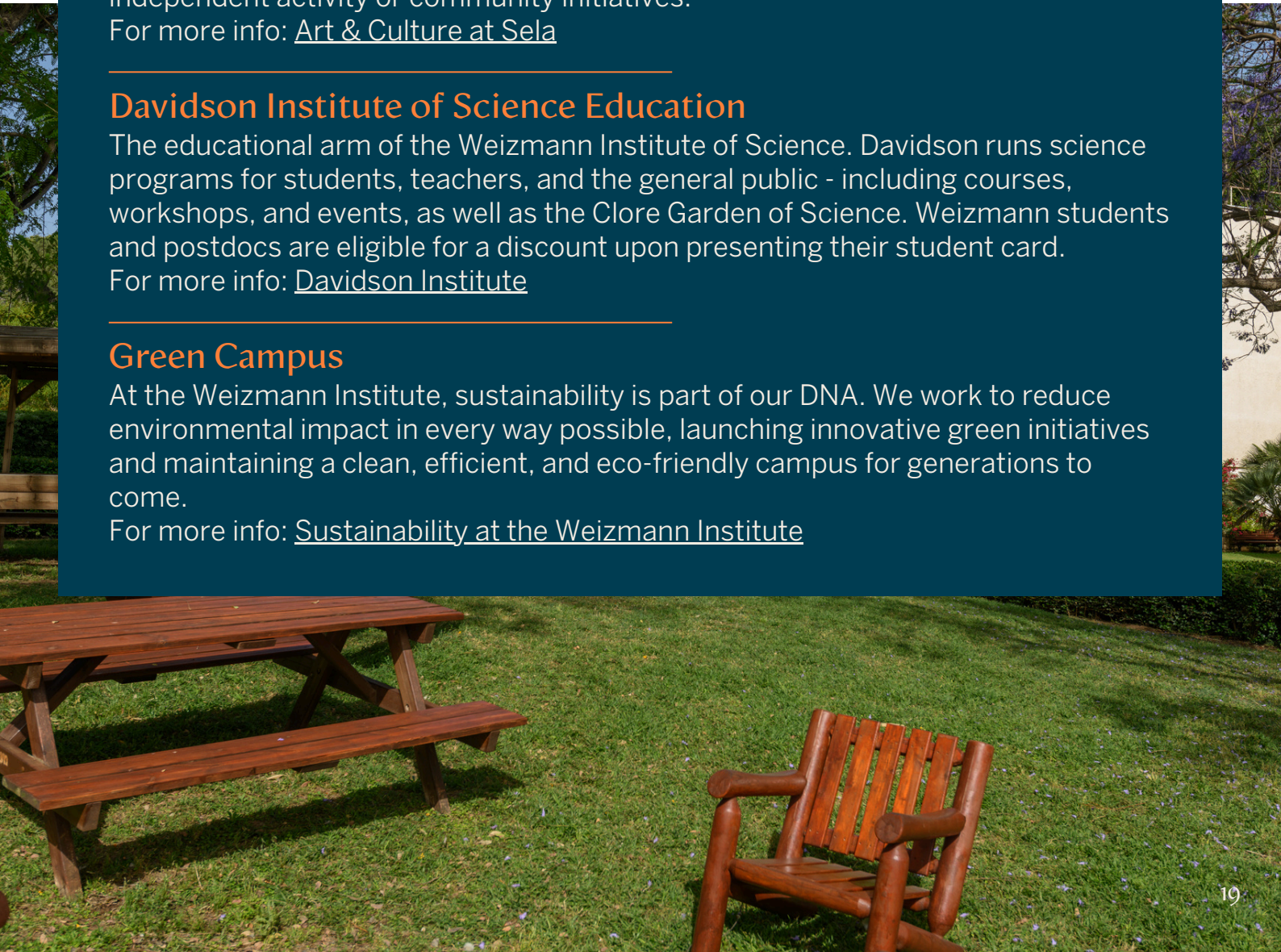
The educational arm of the Weizmann Institute of Science. Davidson runs science programs for students, teachers, and the general public - including courses, workshops, and events, as well as the Clore Garden of Science. Weizmann students and postdocs are eligible for a discount upon presenting their student card.

For more info: [Davidson Institute](#)

Green Campus

At the Weizmann Institute, sustainability is part of our DNA. We work to reduce environmental impact in every way possible, launching innovative green initiatives and maintaining a clean, efficient, and eco-friendly campus for generations to come.

For more info: [Sustainability at the Weizmann Institute](#)





Women in Science

At the Weizmann Institute of Science, outstanding women scientists excel across all fields, and the Institute is committed to advancing gender equality and supporting women researchers.

Our female students and postdocs find a supportive community in the Institute, mentoring programs, and dedicated scholarships that help them lead and succeed. For further information: [Women in Science](#)



Office of Diversity & Inclusion

The Office for Diversity and Inclusion at the Weizmann Institute works to promote equal opportunities and increase the representation of students, postdoctoral fellows, and faculty members from underrepresented groups at the Institute (the Arab and Haredi communities, the Ethiopian-Israeli community, and residents of socio-economic peripheries).

The office promotes an equitable and fair work environment for all, and provides guidance in bridging gaps and resolving conflicts between groups. It also collaborates with the Institute's LGBTQ+ community and provides personal support and guidance to students and postdoctoral fellows from minority groups who need assistance throughout their studies.

The office's vision is to ensure that every student at the Institute feels an integral part of the scientific community, while strengthening scientific excellence through human diversity and multiculturalism.

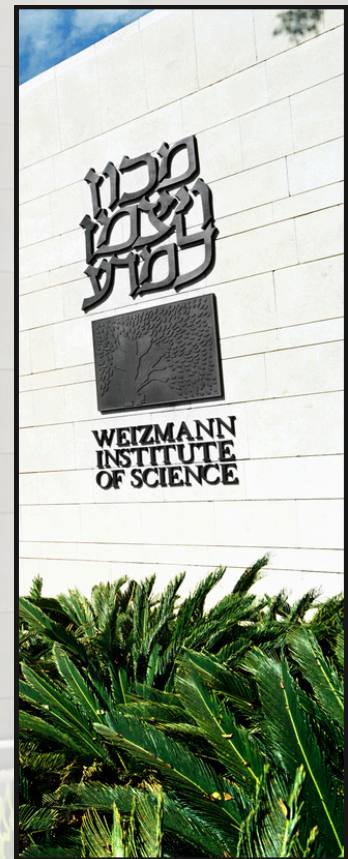
For further information: [Office for Diversity and Inclusion website](#)

The International Office

The International Office of the Weizmann Institute supports international students and postdoctoral fellows from the moment they are accepted to the Institute and throughout their entire time here.

The service includes assistance with visas, housing, insurance, social integration, and day-to-day support — all aimed at making their study and research experience pleasant and successful.

The International Office Website



On the International Office website, you can find extensive information about the city of Rehovot and the Institute's surroundings, including services nearby such as banks, shops, transportation, parking, and more.

[Information about the city of Rehovot and the Institute's surroundings](#)

Attendance and Absence Reports

Students and postdoctoral fellows are required to submit monthly reports on attendance and absence (except for students in the Rothschild-Weizmann MSc non-thesis program).

Reports are submitted via the [WSoS reporting system](#).

Attendance reports for the previous month must be submitted by the 15th of the current month.

Important: Failure to submit a report may delay your stipend payment.

- Days accrue by academic year (October 1–September 30).
- All absences require supervisor approval.
- Do not exceed your allowed absence allocation.
- Vacation and sick days do not accrue when changing status.



Degree Type	Vacation Days	Sick Days	Marriage Leave	Bereavement Leave
MSc students	14	30	3	7
PhD students	22	30	3	7
Postdoctoral fellows	22	30	3	7
Medical School students*	22	30	3	7

* At the School of Medicine, vacation days can be used only during collective breaks or with special approval.



Attendance and Absence

Types of Leave

Vacation:

Absences due to vacation require approval of the supervisor and reporting in the system.

At the end of the academic year (September 30), unused vacation days will be deleted and will not carry over to the following year.

Sick Leave:

Absence due to illness must be reported in the system. If the absence exceeds seven consecutive days, a medical certificate is required. The certificate should be sent by email to the Fellowship and HR team.

Sick days are accumulated and carried over from year to year.

Bereavement Leave:

Absence of up to seven consecutive days is permitted due to the death of an immediate family member (parent, sibling, spouse, child). This must be reported in the system.

Marriage Leave:

Absence for marriage is permitted for up to three consecutive days, provided the marriage is registered in the HR system along with the spouse's details. This must be reported in the WSoS reporting system.





Attendance and Absence

Military Reserve Duty

The Weizmann Institute of Science supports reservists and their families. The Weizmann School of Science is responsible for assisting students and postdocs performing reserve duty, making every effort to ensure that their studies, and financial well-being are not harmed as a result of their service. Special support is also provided to students and postdocs whose spouses are reservists.

For any question or problem related to reserve duty, you are welcome to contact us — we are here to help.

Notifying and Reporting about Reserve Duty:

You must notify the Weizmann School of Science, your research group head, and the Dean of Students upon receiving a reserve duty call-up.

When you return, report your absence period through the reporting system and submit a copy of the reserve duty form (Form 3010) to WSoS.

The form is available for download on the “[Reserve Duty \(Miluim\)](#)” website.

Submitting Form 3010 at the Weizmann School of Science:

Dean of Students – Reserve Duty coordinator:

wellbeingofficer@weizmann.ac.il

Fellowship and HR team: wsos-hr@weizmann.ac.il

Additional updates on reserve duty can be found on the [Weizmann School of Science website](#).

For further information: Reserve Duty Services and Academic Accommodations – [Policies and Procedures](#).

Useful Links

- [Weizmann School of Science](#)
- [School of Medicine](#)
- [Weizmann Institute of Science](#)
- [WeizmannNet](#)
- [International Office](#)
- [WSoS Courses](#)
- [Weizmann IT - User Guides](#)
- [Code of Ethics and WSoS Procedures](#)
- [Academic Calendar](#)
- [WSoS App Installation Guides](#)
- [Students' Council](#)
- [WSoS Moodle](#)
- [Campus Map](#)
- [Accessibility at the Weizmann Institute](#)
- [Institute Libraries](#)



Useful Phone Numbers and Service Centers

Online Directory:

The directory enables locating members of the Weizmann Institute community, including email addresses, and allows searching by name, phone number, and department.

The directory is available on the [Institute website](#).

Service Centers:

Institute Service Center - 9106

Security, safety, construction, electricity, carpentry, leaks, and hazards (e.g., oil on the road, flooding, debris).

IT Service Center - 4444

Computer and communications support.

Safety Unit - Emergency number 2999

For safety, security, fire, and medical emergencies.

Weizmann School of Science Team:

We are at your service for any question or request. Contact us by any channel, or stop by in person. [For WSoS contact details online](#).





To conclude, we once again congratulate you on joining the Weizmann Institute of Science community!
We wish you a fascinating time here, filled with curiosity and inspiration. Ahead of you are years of personal and professional growth, and we encourage you to seize every opportunity to ask, to explore, and to enjoy the journey.
We are here for you and are happy to support you in every way.
Wishing you great success in your studies and research!

Yours,

The Weizmann School of Science Team
Weizmann Institute of Science



We do our utmost to make this booklet accessible in line with service-accessibility regulations.
If you encounter an issue, please contact the [Dean of Students Office](#).