

WEIZMANN מכון  
ו״צמן SCHOOL OF  
SCIENCE למדע ::::

G R A D U A T E S

2025





The Weizmann School of Science cordially invites you to the

Graduation Ceremony for the Conferment of MSc and PhD Degrees and the Awarding of Academic Excellence Prizes

Wednesday, June 4, 2025 at 19:00 David and Fela Shapell Family Holocaust Memorial Plaza Weizmann Institute of Science, Rehovot

בית הספר למחקר - מכון ויצמן למדע מתכבד להזמין

לטקס הענקת תארי מוסמך ודוקטור לפילוסופיה ולהכרזה על פרסים למצטיינים

יום רביעי, ח' בסיוון תשפ"ה, 4 ביוני 2025 בשעה 19:00 בכיכר הזיכרון לשואה ע"ש משפחת דוד ופלה שאפל מכון ויצמן למדע, רחובות

Greetings:

- Prof. Alon Chen, President, Weizmann Institute of Science
Prof. Gilad Perez, Dean, Weizmann School of Science
Prof. Nir Davidson, Chair, Scientific Council of the Weizmann Institute of Science

Guest of honor:

Dr. Orna Berry, Computer scientist, high-tech entrepreneur, and senior executive in the Israeli science and technology industries

On behalf of the graduates:

- Dr. Dima Azaiza Dabbah, Department of Molecular Chemistry and Materials Science
Matan Vidavski, Department of Molecular Genetics

Guest performance:

Amir Dadon

ברכות:

- פרופ' אלון חן, נשיא מכון ויצמן למדע
פרופ' גילעד פרז, דיקן בית הספר למחקר - מכון ויצמן למדע
פרופ' ניר דודאון, יו"ר המועצה המדעית, מכון ויצמן למדע

אורחת כבוד:

ד"ר ארנה ברי, מדענית מחשב, יזמית הייטק, אשת עסקים ומנהלת בכירה במגזרי המדע והטכנולוגיה בישראל

דברים בשם הבוגרים:

- ד"ר דימה עזאיה דבאח, המחלקה לכימיה מולקולרית ולמדע חומרים
מתן וידבסקי, המחלקה לנגטיקה מולקולרית

אמן אורח:

אמיר דדון

Please note:

- waze location: Kimmel Parking, Weizmann Institute, Rehovot.
Guests are required to present confirmation of their registration to the event.
For special access arrangements please contact the School in advance (08-9344170).
Guests will have access to the plaza from 18:15-18:55.
For those unable to attend the ceremony, a live broadcast can be viewed here.

לתשומת לב המוזמנים:

- הגעה באמצעות waze: חניית קימל, מכון ויצמן, רחובות.
הכניסה מתנית בהצגת אישור הישום לאירוע.
אורחים הקוקים לסייע בנגישות מתבקשים להאם מראש את הגעתם עם ביה"ס למחקר (08-9344170).
הכניסה לאתר האירוע ולמתחם המושבים תואפשר מהשעה 18:15 עד 18:55.
לצפייה בשידור הישיר של הטקס, למי שנבצר ממנו להשתתף לחצו כאן.

Weizmann School of Science in The David Lopatie Hall of Graduate Studies

Weizmann Institute of Science, P.O. Box 26, Rehovot 76100, Israel
Phone: + 972-8-934-2924 Fax: + 972-8-934-4114
E-mail: wsos@weizmann.ac.il
https://www.weizmann.ac.il/wsos/

Production: Tal Eizman, Gili Vainer, Ofri Moshe

Design: www.dio-olamot.com

# Contents

[The Weizmann Institute of Science](#)

[The Weizmann School of Science](#)

[Alumni Organization](#)

[Prizes for outstanding students](#)

[Competitive Fellowships](#)

[PhD Recipients](#)

[MSc Recipients](#)

[Non-thesis MSc in Science Teaching Recipients](#)

[With gratitude](#)

# Weizmann Institute of Science

The Weizmann Institute of Science is one of the world's leading basic research institutions in the natural and exact sciences. Approximately 280 research groups operate at the Institute, which stands behind groundbreaking discoveries—from innovative cancer therapies to information-encryption algorithms, space exploration, quantum computing, and environmental innovation.

The Institute offers advanced studies for master's and doctoral degrees and postdoctoral research in the sciences and in science education and operates a research-based medical school for the training of physician-scientists. Its educational wing, the Davidson Institute, is a national leader in training science teachers and developing youth programs.



# The Research Community of the Weizmann Institute of Science and the Weizmann School of Science

The Weizmann School of Science is the central academic body of the Weizmann Institute of Science, dedicating all its resources to advanced research and world-class scientific education. Students benefit from unique, full research fellowships that enable them to devote themselves entirely to groundbreaking research, while taking part directly in some of the leading research groups in the world.

The School's alumni community constitutes one of the Institute's greatest assets. They lead research groups in universities and research institutes worldwide, establish technology and innovation companies, influence scientific and educational policy, and advance a deep connection between science, society, and industry.

The learning experience at the Institute, combining multidisciplinary thinking, boundless curiosity, and cross-disciplinary collaboration, continues to accompany graduates throughout their careers. Many maintain close ties with their former research groups, participate in joint academic and industrial initiatives, and contribute to the advancement of excellence in science education in Israel and around the world.

In the name of the Weizmann School of Science and the Weizmann Institute of Science, we will continue together to lead the forefront of science, foster innovation, and create meaningful impact on the world.

**Your success is a beacon of light for the scientific future.**





**Prof. Alon Chen**  
President,  
Weizmann Institute of Science

Dear graduates,

Were these normal times, I would tell you that today you stand at a point that is both an ending and a beginning. the end of a wonderful period of study and entry into the world of science; the beginning of progress along the long journey of building knowledge and personal growth. All of that, of course, remains true today. Yet in addition, all of us - together with you - now stand before question marks, challenges, and dark clouds of worry concerning the future.

It may therefore be important that we know and remember that above all, the aspiration to knowledge and to understanding the world is what has driven the development of the human species - from the days of the caves to voyages in space; to the dramatic extension of life expectancy; to the building of systems such as artificial intelligence; and to a deep - though still insufficient and incomplete - understanding of the mysteries of the human brain.

If we think of the different fields of research as streams and rivers, we can recall the well-known saying that “All the rivers run into the sea; yet the sea is not full.” In our metaphor, the more we investigate, study, and understand—and the more distinct scientific domains, like rivers, flow into one another - the clearer it becomes that the sea of knowledge is not full: that there remains great need and ample room for further understanding, and that we must extend our gaze beyond the horizon.

This is the place to emphasize that the central value for us in the world of science - and indeed in other realms as well - is truth, and the constant search for truth. It is especially important to say this today when it seems that truth itself is under attack from many different directions. This assault obligates us all to considerable effort in order to keep our focus fixed on the truth.

Our striving for truth is the most important value we bequeath to you, the graduates, so that you may carry it with you as you head toward the future - so that you can contribute to the continued advance of scientific research, to industry, to medicine, and to education. That contribution will help ensure our very existence here in the State of Israel, which struggles with trying challenges, both internal and external - and, of course, will also advance the ongoing journey intended to improve the quality of life of all human beings, wherever they may be.

It is important to understand that these are weighty and complex tasks, and to succeed in them requires broad international collaboration - one that integrates diverse approaches and perspectives, challenges established ways of thinking and relentlessly enhances our ability to reach new insights for the benefit of all humankind.

This vital international cooperation is today in real jeopardy. At present the Weizmann Institute of Science stands at the top of the list of recipients of large and prestigious European Union research grants. Yet recently - because of the unprecedented blow to the international standing of the State of Israel, and because of the political and moral opposition of many scientists worldwide to collaborating with Israeli scientists, we find ourselves almost at a dead end. Such situation casts a heavy shadow, along with grave concern and risk, over the future of Israeli science in general and of the Weizmann Institute in particular. We are joining hands with additional partners in an effort to face these challenges and to preserve and strengthen channels of collaboration with our colleagues around the world.

In a sharp transition, I extend my congratulations to the parents and family members of the Class of 2025. You have every right to be proud. You raised the daughters and sons who stand here today, in their festive gowns, moments before receiving their advanced academic degrees. You are our senior partners, and we thank you for granting us the privilege of being your partners in this success.

Dear graduates,

It is my distinct pleasure to congratulate all of you on receiving an advanced degree from the Weizmann School of Science! Please accept my deep and heartfelt mazal tov for reaching this incredible milestone.

On the backdrop of the ongoing war and the terrible reality of the hostages still in Gaza, your passionate pursuit of scientific knowledge is especially noteworthy. That is because science is source of resilience for Israel and for the world; a vehicle for global collaboration and partnership; and a driver of progress for all humanity. Science isn't merely a means to an end—a tool by which to find specific solutions and technologies—but also a process that accompanies all of mankind in its ongoing quest for betterment and prosperity. Thus science is absolutely essential today, amidst all the challenges and uncertainties, perhaps now more than ever.

Before I conclude, I wish to express my hope and faith that all of our hostages will be released and return to us soon; that we shall live to see the end of this harrowing war in which we are presently immersed; and that the human suffering accompanying this war, on both sides of the border, will also come to an end.

Let us hope that from this point forward, the State of Israel - and each and every one of us, personally, will be able to begin a process of healing toward a better future.

Thank you, all of you.

Prof. Alon Chen



**Prof. Gilad Perez**

Dean,  
Weizmann School of Science

I've thought quite a bit about this speech. What could I possibly say that would reflect, on one hand, the excitement and achievement of our graduates, and on the other, remain faithful to the distress we all feel so tangibly around us. So, I thought I'd speak a little about regeneration.

Dear graduates and families,

I'd like to speak about regeneration. I'm a physicist not a biologist (so I hope that this is sufficiently precise): Regeneration in biology is the process of renewal, restoration, and growth that makes genomes, cells and organisms resilient to natural events that cause disturbance. It is crucial for living beings but nowadays it seems that we need it badly outside of our labs.

You who sit behind me, have already achieved so much, obtained masters and doctorates in fundamental science, amidst the chaos surrounding us – we feel so proud and privileged to walk with you in your academic path. Today, though, I feel that while congratulating you, I get a strong urge to ask for more (can I after all that you've been through?) We wanted to tell you that we need you, we need you to lead the way, as from now on the mantle is yours to carry!

To our mentors, families, and friends — thank you for your support.

And to my fellow graduates, keep moving forward, and help us to create a better future.

Dear graduates,

This is my sixth (and final) year as Dean of the School, and I still haven't quite figured out how a remote place in the Middle East manages to become an incubator for so much talent, most of it local, without hundreds of thousands of applications from all over the world, as is the case at leading universities in the U.S. You, graduates of the Institute, are considered the cream of the crop of academia, sought after for key positions in universities and industry alike. But as you know well, this wonder called the Weizmann Institute is the result of hard work by all of us, and especially by you, the students.

In recent years, we've sometimes feared that the bubble has burst, that the magic we call the Weizmann Institute may be fading. But you, our 321 graduates, have proven the opposite. The magic is still here - We have not lost our human strength. And I'll end by saying that we now pass the torch to you, with a plea and a hope that starting tomorrow, you will lead us, through a process of regeneration, toward a better future.

Dear graduates: MAZAL TOV and congratulations!

Prof. Gilad Perez



**Prof. Nir Davidson**

Chair,  
Scientific Council of the  
Weizmann Institute of  
Science

It was a difficult year. Laden with hardships and blood.

We are all trying to overcome, to survive, to find meaning, and to hold on to hope for a better future.

Dear graduates: You are that hope. Despite the pain, the worry, and the sorrow, you found within yourselves the strength, the curiosity, the talent, and the imagination to study, to grow, to research, and to push the boundaries of human knowledge. And knowledge is the key to interesting and meaningful life, to health, wellbeing, security, and happiness for you, for those around you, and for all of humanity. It is also the key to tolerance, compassion, and acceptance of others.

We, the scientists of the Institute, are proud of you, believe in you, and ask you: Continue to advance the fundamental understanding in the life sciences, in chemistry, in physics, mathematics, and in science education. Fight disease and hunger. Develop new materials, clean energy, artificial intelligence, quantum computing - and go ahead and discover dark matter already.

Remember: To be a scientist is a great privilege - and also a great responsibility.

Take this festive evening to rejoice in your achievement with the families and friends who supported you, with the teachers and mentors who guided you, and gather your strength for the road ahead because it never really ends. And that, truly, is a good thing.

Go forward and succeed.

And to our foreign students: on behalf of all Weizmann scientists, I applaud you for your excellent achievement so far, urge you to have big dreams for the future and wish you to fulfil them

Prof. Nir Davidson



**Yael Goren-Wegman**  
 Executive Director  
 Israeli Friends Association  
 & Alumni Organization  
 Weizmann Institute of  
 Science

Dear graduates,

On behalf of the Alumni Organization, I would like to welcome you to the alumni community of the Weizmann Institute of Science. By choosing to pursue an advanced science degree at Weizmann, you followed your passion and curiosity and demonstrated a true commitment to conduct research for the benefit of humanity.

Our lifetime connections with our graduates have become a tradition of the Weizmann family, and we encourage you to keep in touch with us and let us be part of your professional journey. The Alumni Organization holds face-to-face and online activities, and we will be happy to hear about your experience and facilitate your networking. By connecting to our exclusive alumni platforms, you can interact with fellow graduates working in various Israeli and international companies and attend career-related lectures and events. To benefit from our resources, you can access our LinkedIn, Facebook, and Instagram pages. The Weizmann experience opens numerous doors and paths for further research, innovation, and entrepreneurship, and we wish you success and fulfillment in your professional life, whether in academia, in the industry, or at the intersection of the two.

As Weizmann graduates, you will always be part of a leading community that plays a vital role in promoting our values and paving the way to the success of the next Weizmann generations.

Every discovery begins with curiosity, questions, and doubts. This is the foundation of scientific research, and it is here that your journey begins.

May it be interesting and fulfilling!

Yael Goren-Wegman



## Alumni Organization

The Weizmann Institute of Science Alumni Organization is your connection to more than 7,000 alumni, holding key positions and leading roles in industry and academia in Israel and worldwide. The Alumni Organization is committed to establish a mutually beneficial relationship between the Institute and its alumni, through joint activities, events and networking opportunities.

☎ 08-9342212

🌐 [www.wisalumni.co.il](http://www.wisalumni.co.il)

✉ [alumni@weizmann.ac.il](mailto:alumni@weizmann.ac.il)

📘 <https://www.facebook.com/weizmann.alumni/>

🌐 <https://www.linkedin.com/company/29019774/>





**Dr. Orna Berry**

Computer scientist, high-tech entrepreneur, and senior executive in the Israeli science and technology industries

Dear graduates, proud families, esteemed President of the Weizmann Institute, distinguished faculty members, honored guests,

I join you here this evening with deep emotion and great admiration for your transition - from a period of acquiring knowledge and conducting scientific research to the stage of application. The awarding of advanced degrees at the Weizmann Institute of Science marks a significant turning point for each of you - and for the strength of Israeli academia and the future of the State of Israel. You represent a vital component of Israel's comparative advantage.

At a time when we, as a society and as a nation, face a complex and challenging period, we gather today to recognize your remarkable scientific achievements, precisely when investment in the future of science and research in Israel requires even greater conviction, due to its critical importance to the country. As graduates of the Weizmann Institute, you are poised to shape the future of the nation and its place in the world through groundbreaking innovation and deep scientific inquiry.

The Weizmann Institute of Science, a world-leading research institution, forms a central pillar of Israel's strength. Israeli academia, and this distinguished institute in particular, has long served as a powerful engine driving the creativity and innovation for which Israel is renowned. Throughout its existence, the Weizmann Institute has produced trailblazing scientists and researchers who have achieved significant scientific and technological breakthroughs and, in doing so, have played a decisive role in establishing Israel as a global innovation powerhouse.

You, the exceptional individuals (for the Institute admits only the exceptional) who have been nurtured by Israeli academia, are among the state's most valuable assets. The country's strength and comparative advantage rely on its capacity for innovation and creativity. Science and technology are critical levers for sustainable economic growth, strong social resilience, and national security, especially in a region where we are few among many. Thanks to you, and thanks to generations of leading researchers and educators over the past century, Israel's scientific and technological capabilities have drawn international attention and admiration. In my view, and I hope in yours as well, this is an existential imperative.

The road does not end here. Today we stand at the threshold of a new and fascinating era, driven by major technological revolutions, foremost among them artificial intelligence and quantum science and technologies. These revolutions, which may have an even more dramatic impact than the industrial revolution, are reshaping the way we live, work, think, and the future of humanity itself.

These technologies will allow us to achieve what until now seemed unimaginable.

You now face multidisciplinary challenges that bring intelligence and computation into the fields of medicine, energy, agriculture, and the environment. The future convergence of computational power with analytical and machine learning capabilities holds the potential to analyze complex systems across domains at a level never before seen.

Much like the era that saw the development of the atomic and hydrogen bombs, the responsibility, public awareness, and ethics of scientific application now rest on your shoulders as well. Your role as scientists and researchers also includes the responsible and thoughtful use of science and technology for the benefit of all humankind.

Dear graduates, today you embark on a new journey, equipped with deep knowledge, advanced skills, and essential tools acquired throughout your challenging studies. Be bold in thought, but cautious in drawing conclusions. Be open to new and original ideas, but also critical and skeptical. Dare to dream and envision the future. But always remember the immense responsibility you bear as scientists and thought leaders.

I see in you, graduates of the Weizmann Institute, the future of our country, its renewed vitality, its access to knowledge, its constant reinvention, and its greatest hope.

I wish each and every one of you great success in your professional and personal paths. Always remember that the knowledge and skills you have gained here form a solid foundation and that your true journey is only just beginning. With the tools you now hold, with your uncompromising passion for knowledge and problem-solving, and with your deep commitment to serving humanity—there is no limit to what you can achieve.

Keep dreaming, creating, researching, and shaping the future of humankind.



**On behalf of the graduates**

**Dr. Dima Azaiza Dabbah**

Department of Molecular  
Chemistry and Materials  
Science

Esteemed President, members of the academic faculty, members of the Weizmann School of Science, beloved families, and my fellow companions on this journey,

If someone had told me at the beginning of this path that I would be the one standing here today, delivering the commencement speech at our doctoral graduation ceremony, I probably would've smiled and said, "No way." The road to this moment was far from obvious. But it was filled with faith, hard work, formative experiences, and rare opportunities I was fortunate enough to receive.

I was born and raised in the village of Daburiyya in the Lower Galilee, surrounded by a tradition of working the land, a push for education, and the nurturing of natural curiosity. My beloved grandmother Hamda, though she never learned to read or write, always encouraged us, her children and grandchildren, to study, to aim high, and to believe in ourselves. Between childhood visits to the sheep pen by her side and high school chemistry lessons at the School for Science and the Arts in Jerusalem, I began to sense that science has the power to change lives, ignite revolutions, and maybe even heal the world. And if you can enjoy the journey along the way? Then you've truly been given the best of all worlds.

I came to the Weizmann Institute of Science following the sincere recommendation of someone who believed in me even before I had the courage to believe in myself. My first encounter at Weizmann was with Prof. Ronny Neumann. That meeting was a defining moment, the first time I truly understood that I belong in this world of research, creativity, and innovation. Ronny didn't just open the door, he gave me a sense of home, in a lab that was diverse in every way, representing the full spectrum of Israeli and international society, all while maintaining the highest professional standards. Over time, the initial idea that Ronny sketched on half a sheet of paper became a groundbreaking project: with publications, patents, and a startup company. Alongside his support, I was also fortunate to receive the belief and encouragement of many other researchers at the Institute support that, over the years, strengthened my conviction that not only can I do this, but more importantly, that I belong.

The Weizmann Institute gave me not only the highest level of scientific knowledge, but also tools, confidence, and vision. It shaped me as a researcher, as a woman, and as a mother. The workshops, the conversations, the community - all of these made the journey especially meaningful. Here, I found an intellectually rich and internationally acclaimed environment. Here, I found a community rooted in dialogue, innovation, and excellence. Here, I found a place where people see you as a person, no matter where you come from, and that, I believe, is the key to

everything. It's no coincidence that we're celebrating today at one of the world's most prestigious and respected institutions.

To our families, this diploma is also yours. You nurtured these seeds and supported us every step of the way. And today: look around - you are witnessing this magnificent bloom.

To my fellow graduates, we've come a long and fascinating, challenging, empowering way together, and not only in scientific terms. We endured the COVID-19 pandemic, military operations, and war. Now we move on to a new chapter, carrying with us the spirit of this place. May the dreams that were born here blossom and come to life in the world outside.

And who knows, perhaps some of us will one day return to this home, to the Weizmann Institute of Science (May everyone have the chance to return to their true home), to solve the scientific questions that still remain unanswered, and to serve as inspiration for the next generation that follows in our footsteps.



**On behalf of the graduates**  
**Matan Vidavski**

Department of Molecular  
 Genetics

This evening, we sit together not merely as graduates, but as witnesses.

Witnesses to what a person can achieve when driven by curiosity. In recent years, we have devoted our time to research and discovery, to collecting data and analyzing it. We've drafted theses, presented posters, and spoken at conferences.

I do not presume to fully capture all the hardships we've faced over the past years, both as individuals and as a people. Among us sit students for whom a contagious virus was part of their degree not only in the test tube. Among us are students who have lost loved ones in war, those who spent a significant part of recent years in uniform, and those still waiting to return home. And yet, these very individuals are the researchers, the discoverers. They are the scientists who cannot be stopped.

Consider the place we are sitting in - to my left, the residence of Israel's first president. Before me, lawns and reflecting pools, lecture halls, orchards and groves, laboratories, and seminar rooms. This is the place that protected us and gave us complete freedom to explore, to learn, to ask, and to go deeper. Like the ancient astronomers who observed the skies from the banks of the Euphrates, the Weizmann Institute of Science has provided us, the students, with quiet in the midst of noise, and stability in times of upheaval.

A hundred years ago, at the opening ceremony of the Hebrew University, our national poet reminded us that: "We have come to understand that any nation that desires continued existence, one without shame or humiliation, is obligated to create culture. Not merely borrow it but create it. Truly create it with its own tools, with its own materials, and stamp it with its own seal."

Tonight, we sit here, side by side, as the scientists and cultural contributors of our people. From here, we set out on the path ahead, where we will continue adding to the books of science and spirit, some through advanced degrees, some through industry, and some through independent research.

On behalf of the graduates, I wish to thank the researchers who guided us and the Weizmann Institute of Science.

May the hostages and soldiers return swiftly to their homes, and may the day come when our joy will be complete.



# Prizes for outstanding PhD students

## The John F. Kennedy Prize

The John F. Kennedy Memorial Prizes are sponsored by the Fund that was established at the Institute in memory of the late US President John F. Kennedy.

### **Mr. Guy Ohad**

Advisor: Prof. Leeor Kronik, Department of Molecular Chemistry and Materials Science

### **Ms. Karin Goldberg**

Advisors: Prof. Yifat Merbl, Department of Systems Immunology  
Prof. Zvi Cohen, Tel Aviv University

### **Dr. Oran Yakubovsky**

Advisor: Prof. Shalev Itzkovitz, Department of Molecular Cell Biology

### **Dr. Yuri Lubomirsky**

Advisors: Prof. Eran Bouchbinder, Department of Chemical and Biological Physics  
Prof. Shalev Itzkovitz, Department of Molecular Cell Biology

### **Mr. Shay Sapir**

Advisor: Prof. Robert Krauthgamer, Department of Computer Science and Applied Mathematics

## The Dimitris N. Chorafas Prize

Dr. Dimitris Chorafas (1926-2014), advisor, author, thinker, and philanthropist, established a foundation to recognize outstanding scientific work. Prizes are awarded to candidates from a select number of prestigious institutions worldwide, including the Weizmann Institute.

### **Ms. Anna Uzonyi**

Advisor: Prof. Schraga Schwartz, Department of Molecular Genetics

### **Ms. Shiri Ron**

Advisors: Prof. Shahar Dobzinski,  
Prof. Moni Naor, Department of Computer Science and Applied Mathematics

## The Prof. Israel Dostrovsky Memorial Prize

The Weizmann Institute of Science and the Israel Atomic Energy Commission jointly award an annual prize for excellence in memory of Prof. Israel Dostrovsky, a renowned chemist and the fifth President of the Weizmann Institute.

### **Mr. Nadav Auerbach**

Advisor: Prof. Eli Zeldov, Department of Condensed Matter Physics

### **Dr. Galit Cohen**

Advisor: Dr. Sivan Refaely-Abramson, Department of Molecular Chemistry and Materials Science

## The Ruth and Prof. Abraham (Edek) Blaugrund Prize

After joining the Institute in the 1950s, Prof. Abraham Blaugrund made significant contributions to the field of plasma physics. Established by the Blaugrund family, this prize is awarded to outstanding PhD students in physics.

### **Dr. Roi Holtzman**

Advisor: Prof. Oren Raz, Department of Physics of Complex Systems

## The Elhanan Ezra Bondi Memorial Prize

Dr. Elhanan Bondi, who died in 1971, conducted his doctoral thesis in the Weizmann Institute's Department of Biophysics while battling kidney disease.

### **Mr. David Perl Nussbaum**

Advisors: Prof. Edit Yerushalmi, Department of Science Teaching  
Prof. Baruch Schwarz, The Hebrew University

## The Dov Elad Memorial Prize

Prof. Dov Elad was a professor of chemistry at the Weizmann Institute and chaired the Board of Studies in Chemical Sciences at the graduate school. He contributed greatly to both the Institute and graduate school before passing away in 1979.

### **Dr. Martins Otikovs**

Advisor: Prof. Lucio Frydman, Department of Chemical and Biological Physics

# Prizes for outstanding PhD students

## The Shimon Reich Memorial Prize

Prof. Shimon Reich was a professor in the Department of Materials and Interfaces at the Weizmann Institute for 40 years. He died in 2010.

### **Dr. Amnon Geifman**

Advisor: Prof. Ronen Basri, Department of Computer Science and Applied Mathematics

### **Dr. Dima Azaiza Dabbah**

Advisor: Prof. Ronny Neumann, Department of Molecular Chemistry and Materials Science

## The Gad Resheff Memorial Prize

A doctoral student in the Department of Biophysics, Gad Resheff was killed while serving as the commander of a Suez Canal outpost during the 1973 Yom Kippur War. He was posthumously awarded the Medal of Valor.

### **Dr. Xaver Kriechbaum**

Advisor: Prof. Ofer Zeitouni, Department of Mathematics

## The Giora Yoel Yashinski Memorial Prize

Giora Yoel Yashinski completed his MSc in the Department of Chemical Physics at the Weizmann Institute. He was killed in 1971 when his Air Force plane crashed on the Sinai coast.

### **Dr. Hagar Setty**

Advisor: Dr. Meital Oren-Suissa, Department of Brain Sciences

## The Daniel Brenner Memorial Prize

Daniel Brenner was a doctoral student in the Department of Chemical Physics at the Weizmann Institute. He was killed in the Battle of Sidon during the 1982 Lebanon War.

### **Dr. Michael Sokoletsky**

Advisor: Prof. Ilan Lampl, Department of Brain Sciences

## The Lady Anne Chain Memorial Prize

Lady Anne Chain was a noted British biochemist and longtime friend of the Weizmann Institute of Science.

### **Ms. Rachael Deis**

Advisor: Dr. Dvir Gur, Department of Molecular Genetics

## The Esther Hellinger Memorial Prize

Born in London, Dr. Esther Hellinger joined the scientific staff of the Daniel Sieff Research Institute upon its establishment in 1934 and worked with Dr. Chaim Weizmann.

### **Dr. Sharon Ben-Hur**

Advisor: Prof. Eli Arama, Department of Molecular Genetics

## The Haim Holtzman Memorial Prize

First Lieutenant Haim Holtzman was an Air Force pilot who died heroically in 1969 while preventing his burning plane from crashing into the Weizmann campus and nearby residential areas in Rehovot. He was able to divert the plane over an unpopulated area, but sacrificed his life in doing so.

### **Mr. Erez Zimmerman**

Advisor: Prof. Avishay Gal-Yam, Department of Particle Physics and Astrophysics

## The Menashe Milo Memorial Prize

Menashe Milo completed his studies in physics as part of the academic reserves. During the Yom Kippur War, he fought in the Golan Heights as a tank commander. He died suddenly in 1981.

### **Dr. Noam Galili Darnell**

Advisor: Prof. Itay Tirosh, Department of Molecular Cell Biology

## The Lonia and Jose Roth Memorial Prize

Lonia and Jose M. Roth were Holocaust survivors who appreciated both the natural sciences and fine writing. This prize, awarded for outstanding PhD thesis research combined with excellence in writing in English, is in memory of their lifelong support of the Weizmann Institute and of Israel.

### **Dr. Naama Zung**

Advisor: Prof. Maya Schuldiner, Department of Molecular Genetics

## Prizes for outstanding PhD students

### The Dean's Prize for PhD Students

**Dr. Gilad Sadeh**

Advisor: Prof. Eli Waxman, Department of Particle Physics and Astrophysics

**Dr. Saar Shoer**

Advisors: Prof. Eran Segal, Department of Computer Science and Applied Mathematics  
Prof. Yitzhak Pilpel, Department of Molecular Genetics

## Prizes for outstanding MSc students

### The Susan Sapir Memorial Prize for MSc Students

Susan Sapir worked at the Weizmann Institute of Science for many years, in various capacities and with great devotion. The most senior of her positions was as the Head of the Research Grants and Projects Office.

**Mr. Yotam Lifschytz**

Advisors: Prof. Ariel Amir, Department of Physics of Complex Systems  
Prof. Yitzhak Pilpel, Department of Molecular Genetics

**Mr. Jiaming Shi**

Advisor: Dr. Alexander Poddubny, Department of Physics of Complex Systems

### The Dean's Prize for outstanding MSc students

**Mr. Amitsour Egosi,**

Advisor: Prof. Ohad Shamir, Department of Computer Science and Applied Mathematics

**Ms. Dunya Edilbi**

Advisor: Prof. Maya Schuldiner, Department of Molecular Genetics

**Mr. Roman Urmanov**

Advisor: Dr. Noam Tal Hod, Department of Particle Physics and Astrophysics

**Mr. Yuval Bernard**

Advisor: Prof. Michal Leskes, Department of Molecular Chemistry and Materials Science

**Mr. Stav Deri**

Advisor: Dr. Samer Gnaim, Department of Molecular Chemistry and Materials Science

**Mr. Matan Vidavski**

Advisor: Prof. Naama Barkai, Department of Molecular Genetics

**Mr. Maayan Ziv**

Advisor: Prof. Yohai Kaspi, Department of Earth and Planetary Sciences

**Ms. Jing Liu**

Advisor: Prof. Naama Barkai, Department of Molecular Genetics

**Mr. Amos Hersz Shlomo Kaminski**

Advisor: Dr. Dmitry Gourevitch, Department of Mathematics

**Mr. Sagy Krispin**

Advisor: Prof. Eran Hornstein, Department of Molecular Genetics

**Ms. Anna Rudnitsky**

Advisor: Dr. Ranit Kedmi, Department of Systems Immunology

## Competitive Fellowships for outstanding PhD students

Clore Scholars Programme

Adams Fellowship Program

Azrieli Fellows program

Ariane de Rothschild Fellowship Program for Women

Israel Ministry of Science and Technology Fellowship Program

Israel Council for Higher Education and the Planning and Budgeting Committee Fellowship Program

## Competitive Fellowships for outstanding MSc students

David Lopatie Fellowships

Israel Council for Higher Education and the Planning and Budgeting Committee Fellowship Programs



# PhD



## R E C I P I E N T S

Dr. Omer Abraham  
Dr. Idan Adir  
Dr. Daniel Amgar  
Dr. Ohad Antebi  
Dr. Gal Arnon  
Dr. Maor Assulin  
Dr. Noa Avidan  
Dr. Dima Azaiza Dabbah  
Dr. Rani Barbara  
Dr. Laura Bellassen  
Dr. Roey Ben David  
Dr. Daniel Ben Hur  
Dr. Yasmin Ben Ishay  
Dr. Lital Ben Moyal  
Dr. Roei Ben Nissan  
Dr. Heli Ben-Hamu  
Dr. Sharon Ben-Hur  
Dr. Evgenii Bortnikov  
Dr. Tslil Braun  
Dr. Nadav Brukner  
Dr. Priyasmita Chakrabarti  
Dr. Rishita Chatterjee  
Dr. Sabita Chourasia  
Dr. Galit Cohen  
Dr. Sapir Cohen Shvefel  
Dr. Yemima Duchin Rapp

Dr. Maayan Eilon Ashkenazy  
Dr. Ofir Eisenberg  
Dr. Dan Elhanati  
Dr. Or Eliason  
Dr. Nir Erez  
Dr. Burak Adnan Erkorkmaz  
Dr. Saar Ezagouri  
Dr. Tamir Forsht  
Dr. Noam Galili Darnell  
Dr. Asaf Gat  
Dr. Nimrod Gavriel  
Dr. Amnon Geifman  
Dr. Antonios Georgiou  
Dr. Elinor Gigi  
Dr. Yonatan Givon  
Dr. Tal Givony  
Dr. Korina Goldin Azulay  
Dr. Lior Gorodisky  
Dr. Tamar Gross Lev  
Dr. Nofar Gumpert  
Dr. Hila Guttman  
Dr. Daniel Hayat  
Dr. Adi Hazak  
Dr. Alina Sophie Heukamp  
Dr. Disha Gajanan Hiregange  
Dr. Dina Hochhauser

Dr. Roi Holtzman  
Dr. Ido Irani  
Dr. Tamar Jana  
Dr. Leah Javitt  
Dr. Aditee Kadam  
Dr. Paula Karam-Cohen  
Dr. Michael Katz  
Dr. Yehonatan Kaufman  
Dr. Tal Klein  
Dr. Ygal Klein  
Dr. Omer Kneller  
Dr. Gera Koltman  
Dr. Dor Korn  
Dr. Paula Carolina Kotli  
Dr. Xaver Kriechbaum  
Dr. Anna Lavie  
Dr. Eitan Yekutieli Levine  
Dr. Valeria Lipsman  
Dr. Dina Listov  
Dr. Ella Livnah  
Dr. Gur Arie Livni Alcasid  
Dr. Jenny-Lee Mathias  
Dr. Beatriz Mestre  
Dr. Avia Mizrachi  
Dr. Natali Muskat  
Dr. Hila Naaman  
Dr. Tal Shahar Ohana  
Dr. Bernardo Oldak Kovalsky  
Dr. Martins Otikovs  
Dr. Reut Parasha  
Dr. Sonu Peedikayil Kurien  
Dr. Bianca Pellegrino  
Dr. Meirav Pinkas  
Dr. Stav Rabani  
Dr. Inbal Ravreby  
Dr. Boaz Raz  
Dr. Deena Roller  
Dr. Nili Saar Furer

Dr. Gilad Sadeh  
Dr. Nadav Scher  
Dr. Sapir Sela  
Dr. Emmanouil Semidalas  
Dr. Hagar Setty  
Dr. Melina Shamshoum  
Dr. Yuval Shapir Itai  
Dr. Tal Sheaffer  
Dr. Mark Shneider  
Dr. Saar Shoer  
Dr. Keren Shoshani-Haye  
Dr. Yogev Shpilman  
Dr. Raz Slutsky  
Dr. Eliran Soffer  
Dr. Michael Sokoletsky  
Dr. Yakov Solomons  
Dr. Nemanja Subic  
Dr. Rotem Tal  
Dr. Nitzan Tal  
Dr. Avra Tzaguy  
Dr. Sameernandan Upadhyayula  
Dr. Joelle Welmoed Rachel Van Zuiden  
Dr. Yehonatan Viernik  
Dr. Yael Wagner  
Dr. Hila Weiss Tishler  
Dr. Inbar Zohar  
Dr. Eyal Zoler  
Dr. Naama Zung



ד"ר עידן אדיר  
Dr. Idan Adir

המחלקה לאימונולוגיה ורגנרציה ביולוגית  
בהדרכת פרופ' אירית שגיא

Department of Immunology and  
Regenerative Biology  
Advisor: Prof. Irit Sagi

**Thesis:**  
Irreversible corruption of ECM memory  
perpetuates chronic inflammation in IBD



ד"ר עומר אברהם  
Dr. Omer Abraham

המחלקה למדעים ביומולקולריים  
בהדרכת פרופ' אברהם ירון

Department of Biomolecular Sciences  
Advisor: Prof. Avraham Yaron

**Thesis:**  
The role and function of Siah3 in  
developmental axonal pruning



ד"ר נועה אבידן  
Dr. Noa Avidan

המחלקה לפיסיקה כימית וביולוגית  
בהדרכת פרופ' רוסי חיים בר זיו

Department of Chemical and Biological  
Physics  
Advisor: Prof. Roy Bar-Ziv

**Thesis:**  
Cell-free synthesis and assembly of  
ribosomal large subunit intermediates  
from a DNA brush



ד"ר אופיר איזנברג  
Dr. Ofir Eisenberg

המחלקה לכימיה מולקולרית ומדע החומרים  
בהדרכת פרופ' מילקו אריק ואן דר בום  
ד"ר מיכל להב

Department of Molecular Chemistry and  
Materials Science  
Advisors: Prof. Milko E. van der Boom  
Dr. Michal Lahav

**Thesis:**  
Morphological and Crystallographic  
Transformations in Chiral Metal-  
Organic Crystals and their Selective  
Functionalization



ד"ר סער אזגורי  
Dr. Saar Ezagouri

המחלקה למדעים ביומולקולריים  
בהדרכת פרופ' גד אשר

Department of Biomolecular Sciences  
Advisor: Prof. Gad Asher

**Thesis:**  
Environmental, extracellular and  
intracellular regulators of circadian  
rhythms



ד"ר סאמירננדן אופדיאיולה  
Dr. Sameernandan Upadhyayula

המחלקה לפיסיקה כימית וביולוגית  
בהדרכת פרופ' אליהו פולק

Department of Chemical and Biological  
Physics  
Advisor: Prof. Eli Pollak

**Thesis:**  
New semiclassical methods for rate  
constants of chemical reactions



ד"ר ברנרדו אולדק קובלסקי  
Dr. Bernardo Oldak Kovalsky

המחלקה לגנטיקה מולקולרית  
בהדרכת פרופ' יעקב חנא

Department of Molecular Genetics  
Advisor: Prof. Jacob (Yaqub) Hanna

**Thesis:**  
Modeling the human peri-implantation  
stages: A stem cell approach



ד"ר מרטינס אוטיקובס  
Dr. Martins Otikovs

המחלקה לפיסיקה כימית וביולוגית  
בהדרכת פרופ' לוסיו פרידמן

Department of Chemical and Biological  
Physics  
Advisor: Prof. Lucio Frydman

**Thesis:**  
Development and applications of  
advanced MRI methods for imaging  
challenging regions



ד"ר טל שחר אוחנה  
Dr. Tal Shahar Ohana

המחלקה לפיסיקה כימית וביולוגית  
בהדרכת פרופ' ברק דיין

Department of Chemical and Biological  
Physics  
Advisor: Prof. Barak Dayan

**Thesis:**  
Coherent methods in cavity-QED with a  
single atom



ד"ר דן אלחנתי  
Dr. Dan Elhanati

המחלקה למדעי כדור הארץ ונוכבי הלכת  
בהדרכת פרופ' בריאן ברקוביץ

Department of Earth and Planetary  
Sciences  
Advisor: Prof. Brian Berkowitz

**Thesis:**  
Effects of a time-dependent velocity field  
on the dynamics of chemical transport  
and reactions in porous media



ד"ר עידו אירני  
Dr. Ido Irani

המחלקה לפיסיקה של חלקיקים ואסטרופיסיקה  
בהדרכת פרופ' אבישי גל-ים

Department of Particle Physics and  
Astrophysics  
Advisor: Prof. Avishay Gal-Yam

**Thesis:**  
An observational study of core-collapse  
supernovae: their peculiar explosion sites,  
their early observations and dedicated  
instrumentation for their study



ד"ר מעיין אילון אשכנזי  
Dr. Maayan Eilon Ashkenazy

המחלקה לביולוגיה מבנית וכימית  
בהדרכת פרופ' רון דיסקין

Department of Chemical and Structural  
Biology  
Advisor: Prof. Ron Diskin

**Thesis:**  
Investigating the immune evasion of Lujo  
Arenavirus



ד"ר מאור אסולין  
Dr. Maor Assulin

המחלקה למדעי כדור הארץ וכוכי הלכת בהדרכת פרופ' אלדו שמש ד"ר אייל עליש

Department of Earth and Planetary Sciences  
Advisors: Prof. Aldo Shemesh  
Dr. Eyal Alish

**Thesis:**  
The oxygen isotopic composition of uranium oxides in the nuclear fuel cycle



ד"ר דניאל אמגר  
Dr. Daniel Amgar

המחלקה לפיסיקה של מערכות מורכבות בהדרכת פרופ' דן אורון

Department of Physics of Complex Systems  
Advisor: Prof. Dan Oron

**Thesis:**  
Investigating multiexciton dynamics in semiconductor nanocrystals using temporal, spatial, and spectral photon correlations



ד"ר אור אליאסון  
Dr. Or Eliason

המחלקה למדעי הצמח והסביבה בהדרכת ד"ר עינת שגב

Department of Plant and Environmental Sciences  
Advisor: Dr. Einat Segev

**Thesis:**  
The photo-protective role of vitamin D in the microalga *Emiliania huxleyi*



ד"ר רועי בן דוד  
Dr. Roey Ben David

המחלקה לפיסיקה כימית וביולוגית בהדרכת ד"ר בארון ארן

Department of Chemical and Biological Physics  
Advisor: Dr. Baran Eren

**Thesis:**  
Towards a molecular level understanding of methanol conversion and CO<sub>2</sub> hydrogenation reactions on Cu and Ni model catalysts



ד"ר לורה סוזט בלהסן  
Dr. Laura Bellassen

המחלקה לאימונולוגיה מערכתית בהדרכת פרופ' עידית שחר

Department of Systems Immunology  
Advisor: Prof. Idit Shachar

**Thesis:**  
Slamf5 regulates myeloid-cell mediated neuroinflammation in multiple sclerosis



ד"ר יבגני בורטניקוב  
Dr. Evgenii Bortnikov

המחלקה לכימיה מולקולרית ומדע החומרים בהדרכת ד"ר סרגיי סמנוב

Department of Molecular Chemistry and Materials Science  
Advisor: Dr. Sergey Semenov

**Thesis:**  
Investigation of oscillatory-driven systems: From alternating current electrosynthesis to stationary chemical patterns



ד"ר בוראק עדנאן ארקורקמאז  
Dr. Burak Adnan Erkorkmaz

המחלקה למדעי כדור הארץ וכוכי הלכת בהדרכת פרופ' ינון רוזיך

Department of Earth and Planetary Sciences  
Advisor: Prof. Yinon Rudich

**Thesis:**  
Dust storm-driven dispersal of potential pathogens and antibiotic resistance genes in the Eastern Mediterranean

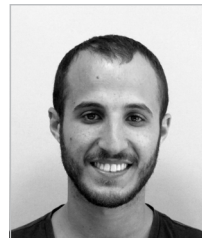


ד"ר גל ארנון  
Dr. Gal Arnon

המחלקה למדעי המחשב ומתמטיקה שימושית בהדרכת פרופ' מוני נאור ד"ר אילון יוגב

Department of Computer Science and Applied Mathematics  
Advisors: Prof. Moni Naor  
Dr. Eylon Yogev

**Thesis:**  
New advancements in interactive oracle proofs: Theory, practice, and limitations



ד"ר ניר ארז  
Dr. Nir Erez

המחלקה לאימונולוגיה ורגנרציה ביולוגית בהדרכת ד"ר אפרת שמע-יעקבי

Department of Immunology and Regenerative Biology  
Advisor: Dr. Efrat Shema

**Thesis:**  
Single-molecule imaging systems for liquid biopsy



ד"ר ליטל בן מויאל  
Dr. Lital Ben Moyal

המחלקה לאימונולוגיה ורגנרציה ביולוגית בהדרכת פרופ' מיכל נאמן

Department of Immunology and Regenerative Biology  
Advisor: Prof. Michal Neeman

**Thesis:**  
Mapping maternal-fetal iron dynamics: A magnetic resonance imaging approach



ד"ר יסמין בן ישי  
Dr. Yasmin Ben Ishay

המחלקה לפיסיקה כימית וביולוגית בהדרכת פרופ' דניאלה גולדפרב פרופ' אמנון הורוויץ

Department of Chemical and Biological Physics  
Advisors: Prof. Daniella Goldfarb  
Prof. Amnon Horovitz

**Thesis:**  
Gd(III)-spin labeling of unnatural amino acids for in-cell EPR studies of cytosolic and membrane proteins



ד"ר דניאל בן חור  
Dr. Daniel Ben Hur

המחלקה למדעים ביומולקולריים בהדרכת פרופ' יחיאל שי פרופ' יעקב אברמסון

Department of Biomolecular Sciences  
Advisors: Prof. Yechiel Shai  
Prof. Jakub Abramson

**Thesis:**  
New insights into the function and molecular mechanism of antimicrobial peptides through pathogen interaction



ד"ר חלי בן-חמו  
Dr. Heli Ben-Hamu

המחלקה למדעי המחשב ומתמטיקה שימושית בהדרכת פרופ' רוברט קראוטגמר פרופ' ירון ליפמן

Department of Computer Science and Applied Mathematics  
Advisors: Prof. Robert Krauthgamer  
Prof. Yaron Lipman

**Thesis:**  
Simulation-Free continuous normalizing flows for generative modeling



ד"ר שרון בן-חור  
Dr. Sharon Ben-Hur

המחלקה לגנטיקה מולקולרית בהדרכת פרופ' אלי ארמה

Department of Molecular Genetics  
Advisor: Prof. Eli Arama

**Thesis:**  
Egg MVBs elicit an LC3-associated phagocytosis-like pathway to degrade paternal mitochondria after fertilization



ד"ר רועי בן ניסן  
Dr. Roe Ben Nissan

המחלקה למדעי הצמח והסביבה בהדרכת פרופ' רון מילוא

Department of Plant and Environmental Sciences  
Advisor: Prof. Ron Milo

**Thesis:**  
Genetic reconstruction and metabolic enhancement of synthetic CO<sub>2</sub> fixation in E. coli



ד"ר יונתן גבעון  
Dr. Yonatan Givon

המחלקה למדעי כדור הארץ וכוכי הלכת בהדרכת פרופ' שירה רוה

Department of Earth and Planetary Sciences  
Advisor: Prof. Shira Raveh-Rubin

**Thesis:**  
Dynamic classification of mediterranean cyclones: Surface impact and mistral air-sea interactions



ד"ר תמר גאנה  
Dr. Tamar Jana

המחלקה לגנטיקה מולקולרית בהדרכת פרופ' נעמה ברקאי

Department of Molecular Genetics  
Advisor: Prof. Naama Barkai

**Thesis:**  
Decoding mechanisms underlying transcription factor binding specificity in vivo



ד"ר אנטוניוס גאורגיו  
Dr. Antonios Georgiou

המחלקה למדעי המוח בהדרכת פרופ' מיכאל צודיקס

Department of Brain Sciences  
Advisor: Prof. Michail Tsodyks

**Thesis:**  
Memory And Obliviscence: From Random To Structured Material



ד"ר נדב ברוקנר  
Dr. Nadav Brukner

המחלקה לפיסיקה של חלקיקים ואסטרופיסיקה בהדרכת פרופ' מיכה ברכוז

Department of Particle Physics and Astrophysics  
Advisor: Prof. Micha Berkooz

**Thesis:**  
The double scaled limit of the SYK model and two-dimensional gravity



ד"ר ראני ברבארה  
Dr. Rani Barbara

המחלקה למדעי המוח בהדרכת ד"ר טקאשי קאוואשימה

Department of Brain Sciences  
Advisor: Dr. Takashi Kawashima

**Thesis:**  
Towards a holistic approach for zebrafish neuroscience: The development of wide-field neural and behavioral imaging



ד"ר צליל בראון  
Dr. Tslil Braun

המחלקה לגנטיקה מולקולרית בהדרכת פרופ' אלי ארמה

Department of Molecular Genetics  
Advisor: Prof. Eli Arama

**Thesis:**  
Epithelial tissue regeneration by compensatory proliferation after ionizing radiation is controlled by the Apical Caspase 9 ortholog dronc



ד"ר הילה גוטמן  
Dr. Hila Guttman

המחלקה לאימונולוגיה ורגנרציה ביולוגית בהדרכת פרופ' אירית שגיא פרופ' זיו רייך

Department of Immunology and Regenerative Biology  
Advisors: Prof. Irit Sagi  
Prof. Ziv Reich

**Thesis:**  
The ECM as a key mediator of lung injury: Insights into Acute and chronic inflammation responses, ECM remodeling, and fibrosis



ד"ר נמרוד גבריאל  
Dr. Nimrod Gavriel

המחלקה למדעי כדור הארץ וכוכי הלכת בהדרכת פרופ' יוחאי כספי

Department of Earth and Planetary Sciences  
Advisor: Prof. Yohai Kaspi

**Thesis:**  
The dynamics of Jupiter's polar cyclones



ד"ר טל גבעוני  
Dr. Tal Givony

המחלקה לאימונולוגיה ורגנרציה ביולוגית בהדרכת פרופ' יעקב אברמסון

Department of Immunology and Regenerative Biology  
Advisor: Prof. Jakub Abramson

**Thesis:**  
Identification and characterization of thymic epithelial cell mimetics



ד"ר ליאור גורודיסקי  
Dr. Lior Gorodisky

המחלקה למדעי המוח  
בהדרכת פרופ' נעם סובל

Department of Brain Sciences  
Advisor: Prof. Noam Sobel

**Thesis:**  
Functional influences from Isolated  
Congenital Anosmia



ד"ר נופר גומפרט  
Dr. Nofar Gumpert

המחלקה לביולוגיה מולקולרית של התא  
בהדרכת פרופ' ירדנה סמואלס

Department of Molecular Cell Biology  
Advisor: Prof. Yarden Samuels

**Thesis:**  
Identification of immunotherapy targets:  
HLA class-I neopeptides derived from  
resistance genes, and HLA class-II  
recurrent neo-peptides



ד"ר קורניה גולדין אזולאי  
Dr. Korina Goldin Azulay

המחלקה למדעים ביומולקולריים  
בהדרכת פרופ' זבולון אלעזר

Department of Biomolecular Sciences  
Advisor: Prof. Zvulun Elazar

**Thesis:**  
Studying functional variations of ATG8  
homologs via endogenous multicolor  
gene tagging



ד"ר ימימה דוכין רפ  
Dr. Yemima Duchin Rapp

המחלקה למדעי הצמח והסביבה  
בהדרכת ד"ר עינת שגב

Department of Plant and Environmental  
Sciences  
Advisor: Dr. Einat Segev

**Thesis:**  
Horizontal gene transfer among marine  
bacteria and into algae



ד"ר אסף גת  
Dr. Asaf Gat

המחלקה למדעי המוח  
בהדרכת ד"ר מיטל אורן

Department of Brain Sciences  
Advisor: Dr. Meital Oren-Suissa

**Thesis:**  
Elucidating convergence and divergence  
of neural mechanisms: From genes to  
behavior



ד"ר תמר גרוס לב  
Dr. Tamar Gross Lev

המחלקה לאימונולוגיה ורגנרציה ביולוגית  
בהדרכת פרופ' אירית שגיא

Department of Immunology and  
Regenerative Biology  
Advisor: Prof. Irit Sagi

**Thesis:**  
The role of ECM proteases in mediating  
local inflammation and angiogenesis in  
implantation models



ד"ר נעם גילי דרנל  
Dr. Noam Galili Darnell

המחלקה לביולוגיה מולקולרית של התא  
בהדרכת פרופ' איתי תירוש

Department of Molecular Cell Biology  
Advisor: Prof. Itay Tirosh

**Thesis:**  
Deciphering glioma organization and  
chromosome copy number variability



ד"ר אמנון גייפמן  
Dr. Amnon Geifman

המחלקה למדעי המחשב ומתמטיקה שימושית  
בהדרכת פרופ' רונן בצרי

Department of Computer Science and  
Applied Mathematics  
Advisor: Prof. Ronen Basri

**Thesis:**  
A spectral analysis of neural tangent  
kernels and implications to the inductive  
bias of fully-connected and convolutional  
neural networks



ד"ר אלינור גיגי  
Dr. Elinor Gigi

המחלקה לביולוגיה מולקולרית של התא  
בהדרכת פרופ' רביד שטראוסמן

Department of Molecular Cell Biology  
Advisor: Prof. Ravid Strausman

**Thesis:**  
IRS1 phosphorylation as a mechanism  
of cancer persists under EGFR  
inhibition and The Glioblastoma and brain  
metastases microbiome



ד"ר רועי הולצמן  
Dr. Roi Holtzman

המחלקה לפיסיקה של מערכות מורכבות  
בהדרכת פרופ' אורן רז

Department of Physics of Complex  
Systems  
Advisor: Prof. Oren Raz

**Thesis:**  
Anomalous dynamics in simple, complex,  
and disordered systems



ד"ר דינה הוכהאוזר  
Dr. Dina Hochhauser

המחלקה לגנטיקה מולקולרית  
בהדרכת פרופ' רותם שורק

Department of Molecular Genetics  
Advisor: Prof. Rotem Sorek

**Thesis:**  
Investigating the phage-bacteria arms  
race using comparative genomics



ד"ר אלינה זופי הויקמפ  
Dr. Alina Sophie Heukamp

המחלקה למדעי המוח  
בהדרכת פרופ' מיכל ריבלין

Department of Brain Sciences  
Advisor: Prof. Michal Rivlin

**Thesis:**  
The role of neurons in the direction-  
selective retinal circuit in visual processing  
in the retina and in the visual thalamus



ד"ר הילה וייס טישלר  
Dr. Hila Weiss Tishler

המחלקה לביולוגיה מולקולרית של התא  
בהדרכת פרופ' איילת ארז

Department of Molecular Cell Biology  
Advisor: Prof. Ayelet Erez

**Thesis:**  
Enhancing the sensitivity of triple negative breast cancers to JAK-STAT inhibitors by targeting arginine availability



ד"ר יעל וגנר  
Dr. Yael Wagner

המחלקה למדעי הצמח והסביבה  
בהדרכת פרופ' תמיר קליין  
ד"ר אורי הוכברג

Department of Plant and Environmental Sciences  
Advisors: Prof. Tamir Klein  
Dr. Uri Hochberg

**Thesis:**  
The role of hydraulics in trees' recovery and survival from severe drought



ד"ר דישה גאג'נאן הירגאנה  
Dr. Disha Gajanan Hiregange

המחלקה לביולוגיה מבנית וכימית  
בהדרכת פרופ' עדה יונת

Department of Chemical and Structural Biology  
Advisor: Prof. Ada Yonath

**Thesis:**  
Medical implications of ribosome's structure: From next generation antibiotics design to illuminating ribosome-linked human diseases and aging



ד"ר דניאל חייט  
Dr. Daniel Hayat

המחלקה למדעים ביומולקולריים  
בהדרכת פרופ' רבקה דיקשטיין

Department of Biomolecular Sciences  
Advisor: Prof. Rivka Dikstein

**Thesis:**  
Targeting eIF1A-ribosome interaction with small molecules unveils differential regulation of uORFs by eIF1A and RPS10 and their antitumor and antiviral effects



ד"ר עדי חזק  
Dr. Adi Hazak

המחלקה למדעים ביומולקולריים  
בהדרכת פרופ' אורי אבינעם

Department of Biomolecular Sciences  
Advisor: Prof. Ori Avinoam

**Thesis:**  
MAPKs signaling orchestrating myoblast differentiation and fusion and the role of PALM2 in skeletal muscle regeneration



ד"ר אייל זולר  
Dr. Eyal Zoler

המחלקה למדעים ביומולקולריים  
בהדרכת פרופ' גדעון שרייבר

Department of Biomolecular Sciences  
Advisor: Prof. Gideon Schreiber

**Thesis:**  
Unraveling the complexity of interferon signaling: JAK promiscuity and IRF1 regulation



ד"ר ענבר זוהר  
Dr. Inbar Zohar

המחלקה לפיסיקה כימית וביולוגית  
בהדרכת ד"ר עמית פינקלר

Department of Chemical and Biological Physics  
Advisor: Dr. Amit Finkler

**Thesis:**  
Quantum sensing of molecular electron spin



ד"ר ג'ואל וולמועד רייצ'ל ון זיידן  
Dr. Joelle Welmoed Rachel Van Zuiden

המחלקה לגנטיקה מולקולרית  
בהדרכת פרופ' ערן הורנשטיין

Department of Molecular Genetics  
Advisor: Prof. Eran Hornstein

**Thesis:**  
Characterizing molecular biology of ALS: Exploring organellar architecture in neurons and splicing defects downstream of TDP-43 pathology



ד"ר יהונתן וירניק  
Dr. Yehonatan Viernik

המחלקה לפיסיקה של חלקיקים ואסטרופיסיקה  
בהדרכת פרופ' יוסף ניר

Department of Particle Physics and Astrophysics  
Advisor: Prof. Yosef Nir

**Thesis:**  
CP violation and electroweak baryogenesis



ד"ר גלית כהן  
Dr. Galit Cohen

המחלקה לכימיה מולקולרית ומדע החומרים  
בהדרכת ד"ר סיון רפאלי-אברמסון

Department of Molecular Chemistry and Materials Science  
Advisor: Dr. Sivan

**Thesis:**  
Ab-initio approach to non-radiative exciton dynamics in materials



ד"ר רותם טל  
Dr. Rotem Tal

המחלקה לביולוגיה מולקולרית של התא  
בהדרכת פרופ' איתי תירוש  
פרופ' טליה גולן

Department of Molecular Cell Biology  
Advisors: Prof. Itay Tirosh  
Prof. Talia Golan

**Thesis:**  
Epithelial to mesenchymal variability divides basal-like pancreatic cancer into clinically significant subsets



ד"ר ניצן טל  
Dr. Nitzan Tal

המחלקה לגנטיקה מולקולרית  
בהדרכת פרופ' רותם שורק

Department of Molecular Genetics  
Advisor: Prof. Rotem Sorek

**Thesis:**  
Uncovering nucleotide modifying defense systems in bacteria



ד"ר פולה כרם-כהן  
Dr. Paula Karam-Cohen

המחלקה למדעים ביומולקולריים  
בהדרת פרופ' נטע רגב-רוצקי

Department of Biomolecular Sciences  
Advisor: Prof. Neta Regev-Rudzki

**Thesis:**  
Studying the effect of malaria-derived extracellular vesicles on host human monocytes



ד"ר מיכאל כץ  
Dr. Michael Katz

המחלקה לביולוגיה מבנית וכימית  
בהדרת פרופ' רון דיסקין

Department of Chemical and Structural Biology  
Advisor: Prof. Ron Diskin

**Thesis:**  
Structural Investigation of the Lassa Virus Glycoprotein Complex along with its facilitatory protein, LARGE1



ד"ר ספיר כהן שבפל  
Dr. Sapir Cohen Shvefel

המחלקה לביולוגיה מולקולרית של התא  
בהדרת פרופ' ירדנה סמואלס

Department of Molecular Cell Biology  
Advisor: Prof. Yardena Samuels

**Thesis:**  
Temporal genomic analysis of tumors bearing low ITH identifies key regulators of immune escape in melanoma



ד"ר ולריה ליפסמן  
Dr. Valeria Lipsman

המחלקה למדעי הצמח והסביבה  
בהדרת ד"ר עינת שגב

Department of Plant and Environmental Sciences  
Advisor: Dr. Einat Segev

**Thesis:**  
The role of bacterial exopolysaccharides in establishing an algal-bacterial joint extracellular matrix



ד"ר דינה ליסטוב  
Dr. Dina Listov

המחלקה למדעים ביומולקולריים  
בהדרת פרופ' שראל פליישמן

Department of Biomolecular Sciences  
Advisor: Prof. Sarel Fleishman

**Thesis:**  
De novo enzyme design: Lessons on catalysis and protein foldability



ד"ר אלה ליבנה  
Dr. Ella Livnah

המחלקה לביולוגיה מבנית וכימית  
בהדרת פרופ' ניר לונדון

Department of Chemical and Structural Biology  
Advisor: Prof. Nir London

**Thesis:**  
New Technologies for Targeted Protein Degradation and Elimination



ד"ר איתן יקותיאל לוין  
Dr. Eitan Yekutiel Levine

המחלקה לפיסיקה של מערכות מורכבות  
בהדרת פרופ' ויקטור ארמנד מלכא

Department of Physics of Complex Systems  
Advisor: Prof. Victor Armand Malka

**Thesis:**  
Improving electron and betatron beam quality in laser-plasma accelerators



ד"ר גור אריה לבני אלכסיד  
Dr. Gur Arie Livni Alcasid

המחלקה להוראת המדעים  
בהדרת ד"ר מיכל איטח השכל

Department of Science Teaching  
Advisor: Dr. Michal Haskel Ittah

**Thesis:**  
Into the black: Effect of an explicated black-boxes discourse on mechanistic reasoning in the biology classroom



ד"ר אנה לביא  
Dr. Anna Lavie

המחלקה לכימיה מולקולרית ומדע החומרים  
בהדרת פרופ' איגור לובומירסקי

Department of Molecular Chemistry and Materials Science  
Advisor: Prof. Igor Lubomirsky

**Thesis:**  
Understanding the origin of anelasticity and electrostriction in Sm-doped ceria



ד"ר ג'ני-לי מטיאס  
Dr. Jenny-Lee Mathias

המחלקה לכימיה מולקולרית ומדע החומרים  
בהדרת פרופ' רוני נוימן

Department of Molecular Chemistry and Materials Science  
Advisor: Prof. Ronny Neumann

**Thesis:**  
Electrocatalytic epoxidation with polyoxometalates using water as the oxygen source



ד"ר אביה מזרחי  
Dr. Avia Mizrachi

המחלקה למדעי הצמח והסביבה  
בהדרת פרופ' אסף ורדי

Department of Plant and Environmental Sciences  
Advisor: Prof. Assaf Vardi

**Thesis:**  
Phenotypic variability and cell fate determination in marine diatoms in response to environmental stress



ד"ר נטלי מושקט  
Dr. Natali Muskat

המחלקה למדעים ביומולקולריים  
בהדרת פרופ' זבולון אלעזר

Department of Biomolecular Sciences  
Advisor: Prof. Zvulun Elazar

**Thesis:**  
Regulation of plasma membrane repair by N-glycosylation of ATG9A



ד"ר נמנג'ה סוביק  
Dr. Nemanja Subic

המחלקה למדעים ביומולקולריים  
בהדרכת פרופ' זבולון אלעזר

Department of Biomolecular Sciences  
Advisor: Prof. Zvulun Elazar

**Thesis:**

Establishing an in vitro model to study axonal autophagy dysregulation in hereditary sensory and autonomic neuropathy type IX



ד"ר הילה נעמן  
Dr. Hila Naaman

המחלקה למדעי המחשב ומתמטיקה שימושית  
בהדרכת פרופ' יונינה אלדר

Department of Computer Science and Applied Mathematics  
Advisor: Prof. Yonina Eldar

**Thesis:**

Signal processing for brain-inspired sampling



ד"ר ביאטריז מסטרה  
Dr. Beatriz Mestre

המחלקה למדעים ביומולקולריים  
בהדרכת פרופ' טוני פוטרמן

Department of Biomolecular Sciences  
Advisor: Prof. Tony Futerman

**Thesis:**

Exploring substrate specificity of Ceramide Synthase



ד"ר ספיר סלע  
Dr. Sapir Sela

המחלקה למדעי המוח  
בהדרכת ד"ר מיטל אורן

Department of Brain Sciences  
Advisor: Dr. Meital Oren-Suissa

**Thesis:**

Deciphering the role of the UNC-40 receptor in dopaminergic cells during health and disease



ד"ר רז סלוצקי  
Dr. Raz Slutsky

המחלקה למתמטיקה  
בהדרכת פרופ' יצחק גלנדר  
פרופ' אורי בדר

Department of Mathematics  
Advisors: Prof. Tsachik Gelernder  
Prof. Uri Bader

**Thesis:**

Growth of invariants of arithmetic lattices using volume formulae and operator algebras



ד"ר הגר סטי  
Dr. Hagar Setty

המחלקה למדעי המוח  
בהדרכת ד"ר מיטל אורן

Department of Brain Sciences  
Advisor: Dr. Meital Oren-Suissa

**Thesis:**

Unraveling sexually dimorphic properties of neural circuits: Insights from C.elegans



ד"ר מיכאל סוקולצקי  
Dr. Michael Sokoletsky

המחלקה למדעי המוח  
בהדרכת פרופ' אילן למפל

Department of Brain Sciences  
Advisor: Prof. Ilan Lampl

**Thesis:**

Mouse cortex aligns coding of perceptual decisions to motor actions according to context



ד"ר אלירן סופר  
Dr. Eliran Soffer

המחלקה למדעי הצמח והסביבה  
בהדרכת פרופ' אסף ורדי

Department of Plant and Environmental Sciences  
Advisor: Prof. Assaf Vardi

**Thesis:**

Tripartite interactions between Emiliania huxleyi, viruses, and bacteria: Unraveling microbial synergies in phytoplankton bloom demise and carbon cycling



ד"ר יעקב סולמונס  
Dr. Yakov Solomons

המחלקה לפיסיקה כימית וביולוגית  
בהדרכת ד"ר אפרים שחמון

Department of Chemical and Biological Physics  
Advisor: Dr. Ephraim Shahmoon

**Thesis:**

Collective quantum light-matter interfaces with atomic arrays



ד"ר דימה עזאיזה-דבאח  
Dr. Dima Azaiza Dabbah

המחלקה לכימיה מולקולרית ומדע החומרים  
בהדרכת פרופ' רוני נוימן

Department of Molecular Chemistry and Materials Science  
Advisor: Prof. Ronny Neumann

**Thesis:**

Electrocatalytic reduction of activated or captured CO<sub>2</sub> using polyoxometalates



ד"ר נילי סער פורר  
Dr. Nili Saar Furer

המחלקה לביולוגיה מולקולרית של התא  
בהדרכת פרופ' לירן שלוש

Department of Molecular Cell Biology  
Advisor: Prof. Liran Shlush

**Thesis:**

Natural and age-related variation in circulating human hematopoietic stem cells and their perturbation with aging and disease



ד"ר עמנואל סמידלס  
Dr. Emmanouil Semidalas

המחלקה לכימיה מולקולרית ומדע החומרים  
בהדרכת פרופ' גרשום מרטין

Department of Molecular Chemistry and Materials Science  
Advisor: Prof. Gershon Martin

**Thesis:**

Accurate and efficient composite wavefunction theory methods through localized natural orbitals and F12 explicit correlation



ד"ר תמיר פורשט  
Dr. Tamir Forsht

המחלקה לכימיה מולקולרית ומדע החומרים  
בהדרת פרופ' ארנסטו יוסלביץ

Department of Molecular Chemistry and  
Materials Science  
Advisor: Prof. Ernesto Joselevich

**Thesis:**  
Halometallenes: A new family of two-  
dimensional materials with all-Metal cores



ד"ר סונו פדיקיל קוריאן  
Dr. Sonu Peedikayil Kurien

המחלקה למדעי המוח  
בהדרת ד"ר מיטל אורן

Department of Brain Sciences  
Advisor: Dr. Meital Oren-Suissa

**Thesis:**  
Neuromodulation of experience-  
dependent sexually dimorphic learning



ד"ר אוהד ענתבי  
Dr. Ohad Antebi

המחלקה לפיסיקה של חומר מעובה  
בהדרת פרופ' ארז ברג  
פרופ' עדי שטרן

Department of Condensed Matter  
Physics  
Advisors: Prof. Erez Berg  
Prof. Ady Stern

**Thesis:**  
Correlation effects in electronic systems  
with narrow bands



ד"ר פריאסמיטה צ'קרבטי  
Dr. Priyasmita Chakrabarti

המחלקה לאימונולוגיה ורגנרציה ביולוגית  
בהדרת פרופ' צבי לפידות

Department of Immunology and  
Regenerative Biology  
Advisor: Prof. Tsvee Lapidot

**Thesis:**  
Circadian oscillations metabolically  
regulate primitive hematopoietic stem  
cell maintenance via mitochondrial  
remodeling and Wnt signaling



ד"ר רישיטה צ'טרג'י  
Dr. Rishita Chatterjee

המחלקה לאימונולוגיה ורגנרציה ביולוגית  
בהדרת פרופ' יוסף ירדן

Department of Immunology and  
Regenerative Biology  
Advisor: Prof. Yosef Yarden

**Thesis:**  
Combating aggressive p53 mutated  
high-Grade serous ovarian cancer with  
novel combinatorial monoclonal antibody  
cocktails



ד"ר סביטה צ'ורסיה  
Dr. Sabita Chourasia

המחלקה לאימונולוגיה ורגנרציה ביולוגית  
בהדרת פרופ' איתן גרוס

Department of Immunology and  
Regenerative Biology  
Advisor: Prof. Atan Gross

**Thesis:**  
MTCH2: Bridging metabolism and energy  
homeostasis—A novel approach to  
tackling obesity



ד"ר רעות פרשה  
Dr. Reut Parasha

המחלקה להוראת המדעים  
בהדרת פרופ' בוריס קוי'צו

Department of Science Teaching  
Advisor: Prof. Boris Koichu

**Thesis:**  
Mathematics teachers as facilitators  
of productive dialogue: Designing  
dialogic situations, resulting dialogue  
patterns, and pathways of professional  
development



ד"ר מירב פנקס  
Dr. Meirav Pinkas

המחלקה לפיסיקה של מערכות מורכבות  
בהדרת פרופ' רועי עוזרי

Department of Physics of Complex  
Systems  
Advisor: Prof. Roee Ozeri

**Thesis:**  
A search of quantum signatures in ultra-  
cold Rb-Sr+ collisions

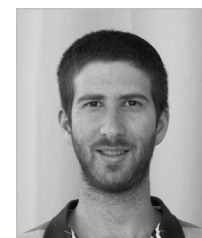


ד"ר ביאנקה פלגרינו  
Dr. Bianca Pellegrino

המחלקה לאימונולוגיה מערכתית  
בהדרת פרופ' עידית שחר

Department of Systems Immunology  
Advisor: Prof. Idit Shachar

**Thesis:**  
CD74 regulates the tumor  
immunosuppressive microenvironment in  
triple negative breast cancer



ד"ר יהונתן קאופמן  
Dr. Yehonatan Kaufman

המחלקה לכימיה מולקולרית ומדע החומרים  
בהדרת פרופ' רוני נוימן

Department of Molecular Chemistry and  
Materials Science  
Advisor: Prof. Ronny Neumann

**Thesis:**  
Electrochemical Activation of O<sub>2</sub>  
And Oxidation of Organic Substrates  
Catalyzed by Copper-Containing  
Polyoxometalates



ד"ר נעמה צונג  
Dr. Naama Zung

המחלקה לגנטיקה מולקולרית  
בהדרת פרופ' מאיה שולדינר

Department of Molecular Genetics  
Advisor: Prof. Maya Schuldiner

**Thesis:**  
Uncovering roles of new contact site  
resident proteins in coordination of  
cellular metabolism

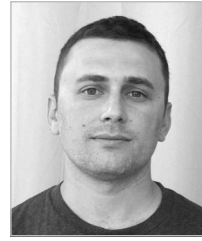


ד"ר אברה צגאי  
Dr. Avra Tzaguy

המחלקה לכימיה מולקולרית ומדע החומרים  
בהדרת פרופ' רוני נוימן

Department of Molecular Chemistry and  
Materials Science  
Advisor: Prof. Ronny Neumann

**Thesis:**  
Electrocatalytic reduction of N<sub>2</sub> to  
NH<sub>3</sub> in organic medium using tri-ferric  
substituted polyoxometalates promoted  
by alkali metals



ד"ר גרא קולטמן  
Dr. Gera Koltman

המחלקה לפיסיקה של חלקיקים ואסטרופיסיקה  
בהדרכת פרופ' רן בודניק

Department of Particle Physics and  
Astrophysics  
Advisor: Prof. Ran Budnik

**Thesis:**  
DireXeno – liquid xenon scintillation  
experiment



ד"ר פאולה קרולינה קוטלי  
Dr. Paula Carolina Kotli

המחלקה להיחידה לארכיאולוגיה מדעית  
בהדרכת פרופ' אליזבטה בוארטו

Department of Scientific Archeology Unit  
Advisor: Prof. Elisabetta Boaretto

**Thesis:**  
Insights into the process of domestication  
of animals in the Southern Levant using  
bottom-up palaeoproteomics



ד"ר אדיתי קדם  
Dr. Aditee Kadam

המחלקה לביולוגיה מולקולרית של התא  
בהדרכת פרופ' לירן שלוש

Department of Molecular Cell Biology  
Advisor: Prof. Liran Shlush

**Thesis:**  
Utilizing insights of DNA repair machinery  
to discover MMEJ deletions and novel  
mechanisms



ד"ר סתיו רבני  
Dr. Stav Rabani

המחלקה לאימונולוגיה מערכתית  
בהדרכת פרופ' עידית שחר

Department of Systems Immunology  
Advisor: Prof. Idit Shachar

**Thesis:**  
The role of CD84 in mediating the  
function of Regulatory B cells in Breast  
Cancer



ד"ר קסאור קריצ'באום  
Dr. Xavier Kriechbaum

המחלקה למתמטיקה  
בהדרכת פרופ' עופר זיתוני

Department of Mathematics  
Advisor: Prof. Ofer Zeitouni

**Thesis:**  
Problems in branching random walk in  
random and non-random environment



ד"ר עומר קנלר  
Dr. Omer Kneller

המחלקה לפיסיקה של מערכות מורכבות  
בהדרכת פרופ' נירית דודוביץ

Department of Physics of Complex  
Systems  
Advisor: Prof. Nirit Dudovich

**Thesis:**  
Time-resolved attosecond interferometry



ד"ר טל קליין  
Dr. Tal Klein

המחלקה לפיסיקה כימית וביולוגית  
בהדרכת פרופ' אורן טל

Department of Chemical and Biological  
Physics  
Advisor: Prof. Oren Tal

**Thesis:**  
Ullmann synthesis in single-molecule  
junctions at cryogenic temperatures



ד"ר יגאל קליין  
Dr. Ygal Klein

המחלקה לפיסיקה של חלקיקים ואסטרופיסיקה  
בהדרכת פרופ' בועז כץ

Department of Particle Physics and  
Astrophysics  
Advisor: Prof. Boaz Katz

**Thesis:**  
Marginally hierarchical few body stellar  
systems – occurrence and dynamics



ד"ר דור קורן  
Dr. Dor Korn

המחלקה לפיסיקה כימית וביולוגית  
בהדרכת פרופ' ברק דיין

Department of Chemical and Biological  
Physics  
Advisor: Prof. Barak Dayan

**Thesis:**  
Photon number-splitting attack on QKD  
and photonic routing by single-atom  
cavity-QED



ד"ר בועז רז  
Dr. Boaz Raz

המחלקה לפיסיקה של מערכות מורכבות  
בהדרכת פרופ' ניר דודזון

Department of Physics of Complex  
Systems  
Advisor: Prof. Nir Davidson

**Thesis:**  
Measuring interactions in a bosonic  
mixture



ד"ר דינה רולר  
Dr. Deena Roller

המחלקה לכימיה מולקולרית ומדע החומרים  
בהדרכת פרופ' ליאור קרוניק

Department of Molecular Chemistry and  
Materials Science  
Advisor: Prof. Leeor Kronik

**Thesis:**  
Improving the precision of real-space  
pseudopotential density functional theory  
calculations



ד"ר ענבל רברבי  
Dr. Inbal Ravreby

המחלקה למדעי המוח  
בהדרכת פרופ' נעם סובל

Department of Brain Sciences  
Advisor: Prof. Noam Sobel

**Thesis:**  
The influence of synchronization,  
smell and breathing patterns on social  
interactions

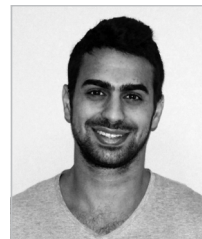


ד"ר סער שוער  
Dr. Saar Shoer

המחלקה למדעי המחשב ומתמטיקה שימושית  
בהדרכת פרופ' ערן סגל  
פרופ' יצחק פלפל

Department of Computer Science and  
Applied Mathematics  
Advisors: Prof. Eran Segal  
Prof. Yitzhak Pilpel

**Thesis:**  
The genetic diversity of the human  
microbiota and its health implications



ד"ר גילעד שדה  
Dr. Gilad Sadeh

המחלקה לפיסיקה של חלקיקים ואסטרופיסיקה  
בהדרכת פרופ' אלי וקסמן

Department of Particle Physics and  
Astrophysics  
Advisor: Prof. Eli Waxman

**Thesis:**  
Non-thermal emission following compact  
objects mergers



ד"ר לאה שביט  
Dr. Leah Javitt

המחלקה לכימיה מולקולרית ומדע החומרים  
בהדרכת פרופ' איגור לובומירסקי  
פרופ' מאיר להב

Department of Molecular Chemistry and  
Materials Science  
Advisors: Prof. Igor Lubomirsky  
Prof. Meir Lahav

**Thesis:**  
Electrofreezing of supercooled water as a  
chemical process



ד"ר טל שפר  
Dr. Tal Sheaffer

המחלקה לפיסיקה של חלקיקים ואסטרופיסיקה  
בהדרכת פרופ' עופר אהרוני  
פרופ' מיכה ברכוז

Department of Particle Physics and  
Astrophysics  
Advisors: Prof. Ofer Aharony  
Prof. Micha Berkooz

**Thesis:**  
Phases and dualities of quantum field  
theory



ד"ר יובל שפיר איתי  
Dr. Yuval Shapir Itai

המחלקה לאימונולוגיה מערכתית  
בהדרכת ד"ר רוני דהן

Department of Systems Immunology  
Advisor: Dr. Rony Dahan

**Thesis:**  
Therapeutic T cell/dendritic cell crosstalk  
for cancer immunotherapy



ד"ר יוגב שפילמן  
Dr. Yogev Shpilman

המחלקה לפיסיקה של חלקיקים ואסטרופיסיקה  
בהדרכת פרופ' יוסף ניר  
פרופ' גלעד פרז

Department of Particle Physics and  
Astrophysics  
Advisors: Prof. Yosef Nir  
Prof. Gilad Perez

**Thesis:**  
Searches for new physics beyond the  
standard model



ד"ר מרק שניידר  
Dr. Mark Shneider

המחלקה לכימיה מולקולרית ומדע החומרים  
בהדרכת פרופ' דניאל וגנר

Department of Molecular Chemistry and  
Materials Science  
Advisor: Prof. Daniel Wagner

**Thesis:**  
Electrospinning of epoxy



ד"ר מלינה שמשום  
Dr. Melina Shamshoum

המחלקה למדעי הצמח והסביבה  
בהדרכת פרופ' אסף אהרוני  
ד"ר פיליפה אנדרה נטליו

Department of Plant and Environmental  
Sciences  
Advisors: Prof. Asaph Aharoni  
Dr. Filipe Andre Natalio

**Thesis:**  
Expression of enzymes involved in the  
cotton cellulose biosynthesis and their  
catalytic assessment using glucose  
derivatives



ד"ר קרן שושני-חי  
Dr. Keren Shoshani-Haye

המחלקה למדעי המוח  
בהדרכת פרופ' אלון חן

Department of Brain Sciences  
Advisor: Prof. Alon Chen

**Thesis:**  
The short- and long-term molecular  
mechanisms and anatomical changes  
induced by prenatal stress



ד"ר נדב שר  
Dr. Nadav Scher

המחלקה למדעים ביומולקולריים  
בהדרכת פרופ' אורי אבינעם

Department of Biomolecular Sciences  
Advisor: Prof. Ori Avinoam

**Thesis:**  
Detailed phenotypic and molecular  
characterization of vesicular pseudopodia  
by correlative light and volume electron  
microscopy



# MSc



## R E C I P I E N T S

Lina Abd Alhlim  
Amit Abecasis  
Shir Abrahami Ben Harush  
Ariel Amar  
Noga Amir  
Gil Amoyal  
Or Arbel  
Carmel Ariel  
Daniil Artamonov  
Mor Atzmon  
Tamir Avioz  
Keren Avnery  
Tomer Babu  
Din Baruch  
Omer Baruch  
Rom Barzily  
Amit Basri  
Yuval Bayer  
Zohar Ben Arrosh  
Shira Ben Asher  
Yedidya Ben Eliyahu  
Ido Ben Shitrit  
Eli David Benuck  
Yuval Berger  
Yuval Bernard  
Noa Binnes  
Ehud Bino  
Dolev Brenman-Begin

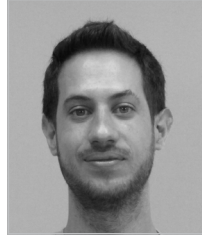
Noa Cahana  
Adam Chaikin Lifshitz  
Aileen Cohen  
Tamar Cohen  
Gideon Cummings  
Dina Daghash  
Eyal Dar  
Heychal Rachel Davidovich  
Lior Dayan  
Gal Dekel  
Stav Deri  
Hadar Dessau  
Noam Dotan  
Nadav Drechsler  
Dunya Edilbi  
Amitsour Egozi  
Shany Egozi  
Dror Einav  
Rachel Frieman-Sharabi  
Noa Frydman  
Lior Galmidi  
Shiyi Gao  
Ava Gatterer  
Hanan Gbarin  
Tali Sarit Gens  
Avigail Gil  
Elena Gimpel  
Shani Gindi

Nitzan Goldman  
Hilly Goldner  
Daniel Gordon Levitan  
Yuval Gorfine  
Maayan Gueta  
Meital Haberman  
Romi Hadary  
Nitzan Haim  
Ragad Hamade  
Neta Hanuka  
Assaf Harel  
Nadav Hargittai  
Dana Hascalovici  
Ayelet Hasson  
Inbar Havilio  
Adina Hefetz  
Sigal Hirsch  
Tal Hirsh-Sameach  
Stav Hirshenzon  
Sagi Idan  
Ari Isbi  
Menachem Isseroff  
Or Bernard Kalifa  
Amos Hersz Shlomo Kaminski  
Nadav Kandel  
Aviya Katz  
Sana Khatib  
Donya Khoury

Dmytro Kiselov  
Yulia Kotlovski  
Sagy Krispin  
Beniamin Krupkin  
Mikhail Labendik  
Katharina Sophia Irma Lange  
Alon Levi  
Tomer Levy  
Romi Lifshitz  
Jing Liu  
Shahar Lyubinsky  
Ilay Magen  
Nir Magrafta  
Abhirup Majumdar  
Artiom Makhlin  
Sahar Malka  
Yuval Margalit  
Nir Yosef May  
Shachar Meir  
Shani Metzger  
Eda Montalieu  
Ron Moran  
Sama Murad  
Ariel Nakav  
Mariia Naumova  
Roe Nitzan  
Boaz Nutkovich  
Kana Ofir  
Michael Oren Perlstein  
Yakir Oz  
Dror Pahima  
Nitsan Pariente  
Inbar Perets  
Maayan Persky  
Yuval Piven  
Sophie Piwko  
Keinan Poradosu  
Eitan Porat

Maitreyee Purnapatre  
Ben Rapoport  
Noy Ravensary  
Omer Richmond  
Avital-Ester Rodov  
Omer Ronen  
Sara Rosen  
Tamar Rosenbaum Cohen  
Hallel Rosenberg-Fogler  
Rebecca Rotnemer  
Noam Rudberg  
Anna Rudnitsky  
Yuval Salant  
Rana Saleh  
Maher Salhab  
Hadar Samra  
Gaya Schneider  
Danielle Serr  
Ivan Sevostianov  
Dana Shainshein  
Rotem Shalev  
Susheel Shankar  
Jiaming Shi  
Noa Shima  
Sapir Shir  
Achinoam Shoham  
Marharyta Skovorodka  
Sharon Stein  
Itammar Steinberg  
Yuval Steinberg  
Tom Talpir  
Rana Tarayra  
Victoria Tilman  
Jonathan Toledano  
Guy Truzman  
Roman Urmanov  
Anastasia Venets  
Matan Vidavski

Xiaoyuan Wang  
Yarden Weiss  
Alon Wenger  
Assaf Yaakobi  
Tomer Yaari  
Ester Yehuda  
Reut Yemini  
Tamir Yerushalmi  
Hadas Yung  
Renee Zacharowicz-Najman  
Yuval Yechiel Zamir  
Gilad Zilberman  
Maayan Ziv



עמית אבקסיס  
Amit Abecasis

המחלקה למתמטיקה ומדעי המחשב  
בהדרכת פרופ' טלי דקל

Department of Mathematics and  
Computer Science  
Advisor: Prof. Tali Dekel

**Thesis:**  
Decomposing a Video into Semantic  
Layers



קרן אבנרי  
Keren Avnery

המחלקה למדעי הפיסיקה  
בהדרכת פרופ' נירית דודוביץ

Department of Physical Sciences  
Advisor: Prof. Nirit Dudovich

**Thesis:**  
Non-perturbative high harmonic  
generation interferometry



תמיר אביעוז  
Tamir Avioz

המחלקה למדעי הכימיה  
בהדרכת ד"ר אריאל אפק

Department of Chemical Sciences  
Advisor: Dr. Ariel Afek

**Thesis:**  
High resolution investigation of protein-  
DNA interactions using modified bases,  
abasic sites, and base pair mismatches



רומן אורמנוב  
Roman Urmanov

המחלקה למדעי הפיסיקה  
בהדרכת ד"ר נועם טל הוד

Department of Physical Sciences  
Advisor: Dr. Noam Tal Hod

**Thesis:**  
Production and detection of tunneling  
regime Breit-Wheeler positrons in  
Experiment 320 at the FACET-II  
accelerator



כנה אופיר  
Kana Ofir

המחלקה להוראת המדעים  
בהדרכת פרופ' עידית ירושלמי

Department of Science Teaching  
Advisor: Prof. Edit Yerushalmi

**Thesis:**  
Teacher-leaders' perceptions of digital  
activities to promote learning from  
physics problem solving



דוניא אדלבי  
Dunya Edilbi

המחלקה למדעי החיים  
בהדרכת פרופ' מאיה שולדינר

Department of Life Sciences  
Advisor: Prof. Maya Schuldiner

**Thesis:**  
Uncovering functions of stress induced  
enzymes



שני אגוזי  
Shany Egozi

המחלקה למדעי החיים  
בהדרכת ד"ר צליל אסט

Department of Life Sciences  
Advisor: Dr. Tsilil Ast

**Thesis:**  
On the hunt for novel cytosolic Fe-S  
cluster-dependent pathways in the  
human cell



עמיצור אגוזי  
Amit Sour Egozi

המחלקה למתמטיקה ומדעי המחשב  
בהדרכת פרופ' אוהד שמיר

Department of Mathematics and  
Computer Science  
Advisor: Prof. Ohad Shamir

**Thesis:**  
Logarithmic width of neural networks  
suffices for robust memorization



שיר אברהמי בן הרוש  
Shir Abrahami Ben Harush

המחלקה למדעי הכימיה  
בהדרכת פרופ' איגור לובומירסקי  
פרופ' מאיר להב

Department of Chemical Sciences  
Advisors: Prof. Igor Lubomirsky  
Prof. Meir Lahav

**Thesis:**  
From Centro-Symmetric Racemic  
Organic Crystals to Pyroelectric and  
Ferroelectric Analogues



גיל שיראל אמויאל  
Gil Amoyal

המחלקה למדעי הכימיה  
בהדרכת פרופ' ליאור קרוניק

Department of Chemical Sciences  
Advisor: Prof. Leeor Kronik

**Thesis:**  
Perturbative ensemble density functional  
theory applied to charge transfer  
excitations



מנחם מנדל כוכבא איסרוב  
Menachem Isseroff

המחלקה למדעי החיים  
בהדרכת פרופ' שראל פליישמן

Department of Life Sciences  
Advisor: Prof. Sarel Fleishman

**Thesis:**  
Exploring the role of stability in protein  
function through PROSS variants of  
Escherichia Coli chaperone DnaK.



מיכאל אורן פרלשטין  
Michael Oren Perlstein

המחלקה למתמטיקה ומדעי המחשב  
בהדרכת פרופ' רן טסלר

Department of Mathematics and  
Computer Science  
Advisor: Prof. Ran Tessler

**Thesis:**  
Untangling the orthogonal momentum  
amplituhedron



**דניל ארטמונוב**  
Daniil Artamonov

המחלקה למדעי הפיסיקה  
בהדרכת ד"ר יובל רוני

Department of Physical Sciences  
Advisor: Dr. Yuval Ronen

**Thesis:**  
Towards topological superconductivity in  
a planar Josephson junction



**אור ידידה ארבל**  
Or Arbel

המחלקה למדעי החיים  
בהדרכת פרופ' רביד שטראוסמן

Department of Life Sciences  
Advisor: Prof. Ravid Straussman

**Thesis:**  
Characterizing tumor microbiome  
(bacteriome and mycobiome) at single-  
cell resolution and its associations with  
immunotherapy response



**נגה אמיר**  
Noga Amir

המחלקה למתמטיקה ומדעי המחשב  
בהדרכת פרופ' גיא רוטבלום  
פרופ' עודד גולדרייך

Department of Mathematics and  
Computer Science  
Advisors: Prof. Guy Rothblum  
Prof. Oded Goldreich

**Thesis:**  
Doubly sub-linear interactive proofs of  
proximity



**ידידיה אברהם בן אליהו**  
Yedidya Ben Eliyahu

המחלקה למדעי החיים  
בהדרכת ד"ר דניאל דר

Department of Life Sciences  
Advisor: Dr. Daniel Dar

**Thesis:**  
Characterizing gene regulation across the  
bacterial cell cycle



**נועה בינס**  
Noa Binnes

המחלקה למדעי הכימיה  
בהדרכת פרופ' קובי לוי

Department of Chemical Sciences  
Advisor: Prof. Koby Levy

**Thesis:**  
Various ways to be negative: biophysical  
characterisation of polyanionic  
biomolecules



**אהוד בינו**  
Ehud Bino

המחלקה למדעי החיים  
בהדרכת פרופ' אסף גל

Department of Life Sciences  
Advisor: Prof. Assaf Gal

**Thesis:**  
Understanding the role of coccolith  
associated polysaccharides in  
the biomineralization process of  
*Pleurochrysis carterae*



**יובל בייר**  
Yuval Bayer

המחלקה למדעי הכימיה  
בהדרכת ד"ר אריאל אפק

Department of Chemical Sciences  
Advisor: Dr. Ariel Afek

**Thesis:**  
Advanced Quantification of Transcription  
Factor Specificity for Long and Modified  
Binding Sites in Protein Binding  
Microarrays



**תומר באבו**  
Tomer Babu

המחלקה למדעי החיים  
בהדרכת פרופ' ירדנה סמואלס

Department of Life Sciences  
Advisor: Prof. Yarden Samuels

**Thesis:**  
KRAS G12V neoantigen-specific TCR  
reactivity assessment in vitro and in vivo  
in combination with lymphodepleting  
chemotherapy



**כרמל אריאל**  
Carmel Ariel

המחלקה למתמטיקה ומדעי המחשב  
בהדרכת פרופ' רוני פז

Department of Mathematics and  
Computer Science  
Advisor: Prof. Rony Paz

**Thesis:**  
Reinforcement learning with different  
signs and same sign feedback:  
Comparative analysis



**עידו בן שיטריט**  
Ido Ben Shitrit

המחלקה למדעי החיים  
בהדרכת ד"ר ירדן כהן

Department of Life Sciences  
Advisor: Dr. Yarden Cohen

**Thesis:**  
Development of methods to silence  
the mMAN brain nucleus in the canary  
songbird.



**זהר בן הרוש**  
Zohar Ben Arrosh

המחלקה למדעי הכימיה  
בהדרכת פרופ' ניר לונדון

Department of Chemical Sciences  
Advisor: Prof. Nir London

**Thesis:**  
Development of covalent binders for the  
FBXL17 E3 ligase



**שירה בן אשר**  
Shira Ben Asher

המחלקה למדעי החיים  
בהדרכת ד"ר עינת שגב

Department of Life Sciences  
Advisor: Dr. Einat Segev

**Thesis:**  
The influence of trace metals on the  
interactions between marine bacteria and  
microalgae

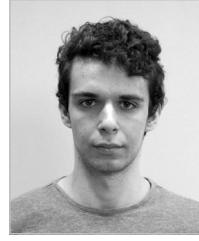


יובל ברגר  
Yuval Berger

המחלקה למדעי החיים  
בהדרת פרופ' נטע רגב-רוצקי

Department of Life Sciences  
Advisor: Prof. Neta Regev-Rudzki

**Thesis:**  
Characterization of the DNA cargo within extracellular vesicles secreted by the malaria parasite



עמית בצרי  
Amit Basri

המחלקה למדעי הפיסיקה  
בהדרת פרופ' כפיר בלום

Department of Physical Sciences  
Advisor: Prof. Kfir Blum

**Thesis:**  
Generalization of the Gelfand-Yaglom Theorem and Spherical Symmetry of the Bounce



אלי דוד בנוק  
Eli David Benuck

המחלקה למדעי החיים  
בהדרת פרופ' ניר יוסף

Department of Life Sciences  
Advisor: Prof. Nir Yosef

**Thesis:**  
Spatiotemporal mapping of T cell development in the mouse thymus at single-cell resolution



חנאן ג'בארין  
Hanan Gbarin

המחלקה להוראת המדעים  
בהדרת פרופ' רון בלונדר

Department of Science Teaching  
Advisor: Prof. Ron Blonder

**Thesis:**  
Developing critical thinking skills in high school students within the context of environmental issues: A comparative study between Arabic and Jewish societies



יובל ברנרד  
Yuval Bernard

המחלקה למדעי הכימיה  
בהדרת פרופ' מיכל לסקס

Department of Chemical Sciences  
Advisor: Prof. Michal Leskes

**Thesis:**  
Revisiting the solution to Bloch-McConnell equations for robust quantification of chemical exchange



דולב ברנמן בגין  
Dolev Brenman-Begin

המחלקה למדעי הכימיה  
בהדרת ד"ר דביר גור

Department of Chemical Sciences  
Advisor: Dr. Dvir Gur

**Thesis:**  
Exploring polymers, small molecules and micro-environment as modulators of organic crystals and their optical properties



רום ברזילי  
Rom Barzily

המחלקה למדעי החיים  
בהדרת פרופ' רבקה דיקשטיין

Department of Life Sciences  
Advisor: Prof. Rivka Dikstein

**Thesis:**  
Discovery of the organizational principles in the regulation of the malaria parasite *P. falciparum*'s protein translation machinery and their potential as drug targets



עומר ברוך  
Omer Baruch

המחלקה למדעי החיים  
בהדרת פרופ' אברהם לוי

Department of Life Sciences  
Advisor: Prof. Avraham Levy

**Thesis:**  
A multi-omics approach to identify deleterious mutations in plants



דין ברוך  
Din Baruch

המחלקה למדעי החיים  
בהדרת פרופ' מאיה שולדינר

Department of Life Sciences  
Advisor: Prof. Maya Schuldiner

**Thesis:**  
Creation and validation of a novel yeast proteome-wide library for protein detection and analysis



ניצן גולדמן  
Nitzan Goldman

המחלקה למדעי החיים  
בהדרת פרופ' סטפן יונג

Department of Life Sciences  
Advisor: Prof. Steffen Jung

**Thesis:**  
Studying dynamics of the monocyte-to-macrophage axis

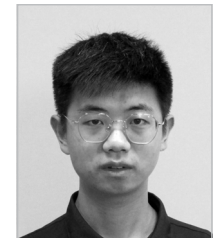


מעיין גואטה  
Maayan Gueta

המחלקה למדעי החיים  
בהדרת פרופ' יובל אשד

Department of Life Sciences  
Advisor: Prof. Yuval Eshed

**Thesis:**  
Regulation of lateral meristem initiation and cell-cell communication during SAM floral transition



שאיי גאו  
Shiyi Gao

המחלקה למדעי הכימיה  
בהדרת פרופ' ארנסטו יוסלביץ

Department of Chemical Sciences  
Advisor: Prof. Ernesto Joselevich

**Thesis:**  
2D metals, alloys and intermetallics



יובל גורפיין  
Yuval Gorfine

המחלקה למתמטיקה ומדעי המחשב  
בהדרכת פרופ' אורי בדר

Department of Mathematics and  
Computer Science  
Advisor: Prof. Uri Bader

**Thesis:**  
Spectral gap absorption principle for  
unitary representations of algebraic  
groups over local fields



דניאל גורדון לויטן  
Daniel Gordon Levitan

המחלקה למדעי הכימיה  
בהדרכת פרופ' בוריס ריבצ'נסקי

Department of Chemical Sciences  
Advisor: Prof. Boris Rybtchinski

**Thesis:**  
Electrolyte Controlled Regioselective  
Electro-Reductive Olefin Cross-Coupling



הילי גולדנר  
Hilly Goldner

המחלקה למדעי החיים  
בהדרכת ד"ר ליאת פני ינקלביץ קרן

Department of Life Sciences  
Advisor: Dr. Leeat Yankielowicz-Keren

**Thesis:**  
Uncovering organ-specific spatial  
features of the tumor microenvironment  
in melanoma brain metastases using  
multiplexed imaging



טלי שרית גנס  
Tali Sarit Gens

המחלקה למדעי הכימיה  
בהדרכת פרופ' שירה רוה

Department of Chemical Sciences  
Advisor: Prof. Shira Raveh-Rubin

**Thesis:**  
A climatological perspective on cyclones  
impacts in the eastern mediterranean  
using potential vorticity-based  
classification



ליאור גלמידי  
Lior Galmidi

המחלקה למדעי הכימיה  
בהדרכת ד"ר סאמר גנאים

Department of Chemical Sciences  
Advisor: Dr. Samer Gnaim

**Thesis:**  
One-electron logic for trans-selective  
semi-hydrogenation of alkynes through  
cobalt catalysis



שני גינדי  
Shani Gindi

המחלקה למתמטיקה ומדעי המחשב  
בהדרכת פרופ' עדי שמיר

Department of Mathematics and  
Computer Science  
Advisor: Prof. Adi Shamir

**Thesis:**  
A new adversarial attack on deep neural  
networks based on gradient jumps



אלנה גימפל  
Elena Gimpel

המחלקה למדעי החיים  
בהדרכת פרופ' טלי קמחי

Department of Life Sciences  
Advisor: Prof. Tali Kimchi

**Thesis:**  
Sexually dimorphic oxytocin circuits drive  
aggression in wild house mice



אביגיל גיל  
Avigail Gil

המחלקה למדעי הפיסיקה  
בהדרכת פרופ' ארז ברג

Department of Physical Sciences  
Advisor: Prof. Erez Berg

**Thesis:**  
Competition between charge and pair  
density waves in a single-valley system  
turned to a Van Hove singularity



אווה גטרר  
Ava Gatterer

המחלקה למדעי החיים  
בהדרכת פרופ' אלעזר זלצר

Department of Life Sciences  
Advisor: Prof. Elazar Zelzer

**Thesis:**  
Deciphering the role of Wnt/beta-catenin  
signaling pathway in muscle spindle  
development and function



נעם דותן  
Noam Dotan

המחלקה למתמטיקה ומדעי המחשב  
בהדרכת פרופ' אלעד שניידמן

Department of Mathematics and  
Computer Science  
Advisor: Prof. Elad Schneidman

**Thesis:**  
Emergence of internal representation  
of space and behavioral variables in  
different artificial neural networks learning  
to forage by imitation or reinforcement  
learning



היכל רחל דוידוביץ  
Heychal Rachel Davidovich

המחלקה למדעי הפיסיקה  
בהדרכת פרופ' ויקטור ארמנד מלכא

Department of Physical Sciences  
Advisor: Prof. Victor Armand Malka

**Thesis:**  
Coupling electron beam from LWFA into  
PWFA



דינא דאגאש  
Dina Daghash

המחלקה למדעי הכימיה  
בהדרכת פרופ' דבורה פאס

Department of Chemical Sciences  
Advisor: Prof. Deborah Fass

**Thesis:**  
The Mechanism of Disulfide-mediated  
Polymerization of Mucin and role of the  
Disulfide Catalyst QSOX1 in lungs



גל דקל  
Gal Dekel

המחלקה למדעי הפיסיקה  
בהדרכת פרופ' רועי עוזרי

Department of Physical Sciences  
Advisor: Prof. Roee Ozeri

**Thesis:**  
Towards three-qubit gates via state-dependent mechanical effects in trapped-ion systems



הדר דסאו  
Hadar Dessau

המחלקה למדעי הכימיה  
בהדרכת פרופ' אמנון בר שיר

Department of Chemical Sciences  
Advisor: Prof. Amnon Bar Shir

**Thesis:**  
In vivo mapping of trimethylamine metabolism by hepatic enzyme (FMO3) using 2H-MRI



ליאור דיין  
Lior Dayan

המחלקה למדעי החיים  
בהדרכת ד"ר ירון עמנואל ענתבי

Department of Life Sciences  
Advisor: Dr. Yaron Antebi

**Thesis:**  
Explore the effect of antigen dynamics on T-cell stimulation and subsequent activation



סיגל הירש  
Sigal Hirsch

המחלקה למדעי הכימיה  
בהדרכת פרופ' בריאן ברקוביץ  
ד"ר דרור ישי

Department of Chemical Sciences  
Advisors: Prof. Brian Berkowitz  
Dr. Ishai Dror

**Thesis:**  
Characterizing the particulate content of urine in healthy humans using flow cytometry



רומי הדרי  
Romi Hadary

המחלקה למדעי החיים  
בהדרכת פרופ' רותם שורק

Department of Life Sciences  
Advisor: Prof. Rotem Sorek

**Thesis:**  
Diversity and evolution of phage sponge proteins that cancel bacterial immune signaling



מיטל הברמן  
Meital Haberman

המחלקה למדעי החיים  
בהדרכת פרופ' דבורה פאס

Department of Life Sciences  
Advisor: Prof. Deborah Fass

**Thesis:**  
MUC5AC Mucin Assembly Structure and Mechanism and CysD1 domain Diversification



נדב דרקסלר  
Nadav Drechsler

המחלקה למדעי הפיסיקה  
בהדרכת פרופ' יובל אורג

Department of Physical Sciences  
Advisor: Prof. Yuval Oreg

**Thesis:**  
Probing majorana zero modes in topological superconductors with multi-terminal conductance and electron interferometry



סתיו דרעי  
Stav Deri

המחלקה למדעי הכימיה  
בהדרכת ד"ר סאמר גנאים

Department of Chemical Sciences  
Advisor: Dr. Samer Gnaim

**Thesis:**  
Free Oxoboranes: Formation, Structure, and Reactivity



אייל דר  
Eyal Dar

המחלקה למדעי הפיסיקה  
בהדרכת ד"ר סרג' רוזנבלום

Department of Physical Sciences  
Advisor: Dr. Serge Rosenblum

**Thesis:**  
High-fidelity entangling operations on bosonic qubits in a superconducting cavity using erasure errors detection



נדב הר גיתי  
Nadav Hargittai

המחלקה למדעי הפיסיקה  
בהדרכת פרופ' רן בודניק  
ד"ר הגר לנדסמן

Department of Physical Sciences  
Advisors: Prof. Ran Budnik  
Dr. Hagar Landsman

**Thesis:**  
Colour centre detectors: A novel low-threshold detection mechanism for sub-GeV dark matter direct detection experiments



סתיו הירשנזון  
Stav Hirshenson

המחלקה למדעי החיים  
בהדרכת פרופ' מיכל נאמן

Department of Life Sciences  
Advisor: Prof. Michal Neeman

**Thesis:**  
Investigating hypoxia mechanisms in the placenta: The role of transglutaminase 2 in preeclampsia pathogenesis



טל הירש-שמח  
Tal Hirsh-Sameach

המחלקה להוראת המדעים  
בהדרכת פרופ' רון בלונדר

Department of Science Teaching  
Advisor: Prof. Ron Blonder

**Thesis:**  
The impact of personalized context through different careers on students' interest in learning chemistry and on their future career aspirations



אלון וונגר  
Alon Wenger

המחלקה למדעי הכימיה  
בהדרכת פרופ' רינה רוזנצוויג

Department of Chemical Sciences  
Advisor: Prof. Rina Rosenzweig

**Thesis:**  
Elucidating the structure and function of DNAJC12 chaperone and its dysfunction in HPA disease



קסיואן וונג  
Xiaoyuan Wang

המחלקה למדעי הכימיה  
בהדרכת פרופ' מיכל לסקס

Department of Chemical Sciences  
Advisor: Prof. Michal Leskes

**Thesis:**  
Designing an artificial solid electrolyte interphase for titanate anodes in sodium ion batteries



אסף הראל  
Assaf Harel

המחלקה למדעי הפיסיקה  
בהדרכת פרופ' תומס וידיק

Department of Physical Sciences  
Advisor: Prof. Thomas Vidick

**Thesis:**  
Progress towards an NLTS+ theorem



יובל יחיאל זמיר  
Yuval Yechiel Zamir

המחלקה למדעי הפיסיקה  
בהדרכת פרופ' שחל אילני

Department of Physical Sciences  
Advisor: Prof. Shahal Ilani

**Thesis:**  
Imaging electrostatic potential in Magic Angle Twisted Bilayer graphene



גלעד זילברמן  
Gilad Zilberman

המחלקה למדעי החיים  
בהדרכת פרופ' ארי אלסון  
ד"ר נינה ראובן

Department of Life Sciences  
Advisors: Prof. Ari Elson  
Dr. Nina Reuven

**Thesis:**  
Exploring the role of Non-Muscle Myosin IIA in Osteoclast development



מעין זיו  
Maayan Ziv

המחלקה למדעי הכימיה  
בהדרכת פרופ' יוחאי כספי

Department of Chemical Sciences  
Advisor: Prof. Yohai Kaspi

**Thesis:**  
Characterizing Jupiter's interior using machine learning: From a multidimensional problem to four key structures



אנסטסיה ונאטס  
Anastasia Venets

המחלקה למדעי הפיסיקה  
בהדרכת פרופ' דן אורון

Department of Physical Sciences  
Advisor: Prof. Dan Oron

**Thesis:**  
Single-photon counting spectroscopy — Spectral phase measurement in the time domain

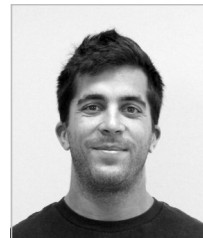


ירדן וייס  
Yarden Weiss

המחלקה למדעי החיים  
בהדרכת ד"ר דוד גוכמן

Department of Life Sciences  
Advisor: Dr. David Gokhman

**Thesis:**  
The effects of variants in cis-regulatory elements on divergent gene expression



מתן וידבסקי  
Matan Vidavski

המחלקה למדעי החיים  
בהדרכת פרופ' נעמה ברקאי

Department of Life Sciences  
Advisor: Prof. Naama Barkai

**Thesis:**  
Differential binding of short tandem repeats by DNA binding domains and intrinsically disordered regions of transcription factors



סנא חטיב  
Sana Khatib

המחלקה למדעי החיים  
בהדרכת פרופ' גדעון שרייבר

Department of Life Sciences  
Advisor: Prof. Gideon Schreiber

**Thesis:**  
Investigating the molecular basis underlying differential type 1 interferon signaling



דוניא חורי  
Donya Khoury

המחלקה למדעי החיים  
בהדרכת פרופ' יצחק לפל

Department of Life Sciences  
Advisor: Prof. Yitzhak Pilpel

**Thesis:**  
Investigating the Inheritance Mechanisms of Quantitative Traits in Saccharomyces cerevisiae Through Sexual Mating



ענבר חביליו  
Inbar Havalio

המחלקה למדעי הפיסיקה  
בהדרכת פרופ' כפיר בלום

Department of Physical Sciences  
Advisor: Prof. Kfir Blum

**Thesis:**  
Where Globular clusters ends meet: Identifying the Tidal Destruction of Globular Clusters by Dark Matter Halos



רגד חמאדה  
Ragad Hamade

המחלקה למדעי החיים  
בהדרכת פרופ' טלי קמחי

Department of Life Sciences  
Advisor: Prof. Tali Kimchi

**Thesis:**  
Social seismic communication: Mapping circuits of solitary behavior in the blind mole rat (Spalax)



אדם חייקין ליפשיץ  
Adam Chaikin Lifshitz

המחלקה למדעי הכימיה  
בהדרכת פרופ' עודד אהרונסון

Department of Chemical Sciences  
Advisor: Prof. Oded Aharonson

**Thesis:**  
A novel chromospheric transit model for exoplanetary transmission spectroscopy



ניצן חיים  
Nitzan Haim

המחלקה למדעי החיים  
בהדרכת ד"ר דוד גוכמן

Department of Life Sciences  
Advisor: Dr. David Gokhman

**Thesis:**  
Mapping the effect of DNA methylation on gene expression in human evolution



ויקטוריה טילמן  
Victoria Tilman

המחלקה למדעי החיים  
בהדרכת פרופ' אילן למפל

Department of Life Sciences  
Advisor: Prof. Ilan Lampl

**Thesis:**  
Phase-phase coupling of respiration and local field potentials



יונתן טולידנו  
Jonathan Toledano

המחלקה למדעי החיים  
בהדרכת ד"ר טקאשי קאוואשימה

Department of Life Sciences  
Advisor: Dr. Takashi Kawashima

**Thesis:**  
The neuronal mechanisms of the effects of psilocybin on stress resilience



עדינה חפץ  
Adina Hefetz

המחלקה למדעי הכימיה  
בהדרכת פרופ' קובי לוי

Department of Chemical Sciences  
Advisor: Prof. Koby Levy

**Thesis:**  
Molecular mechanisms and kinetics of ternary complex formation between transcription factors and DNA



דנה חסקלוביץ  
Dana Hascalovici

המחלקה למדעי החיים  
בהדרכת פרופ' עפר יזחר

Department of Life Sciences  
Advisor: Prof. Ofer Yizhar

**Thesis:**  
Characterization of optogenetic synaptic inhibition tools, and their optimization for in-vivo applications



איילת חסון  
Ayelet Hasson

המחלקה למדעי הכימיה  
בהדרכת פרופ' ברק דיין

Department of Chemical Sciences  
Advisor: Prof. Barak Dayan

**Thesis:**  
Study of polarization-gradient cooling of atoms in the presence of 3D magnetic fields



נטע חנוכה  
Neta Hanuka

המחלקה למדעי החיים  
בהדרכת פרופ' אורן שולדינר

Department of Life Sciences  
Advisor: Prof. Oren Schuldiner

**Thesis:**  
The role of neurotransmitter receptors of the G-protein coupled family in axon pruning



גיא טרוזמן  
Guy Truzman

המחלקה למדעי החיים  
בהדרכת ד"ר ליאת פני ינקלביץ קרן

Department of Life Sciences  
Advisor: Dr. Leeat Yankielowicz-Keren

**Thesis:**  
Mapping the spatial organization of tumor phenotypes in pancreatic cancer using multiplexed imaging



רנא טראירה  
Rana Tarayra

המחלקה למדעי הכימיה  
בהדרכת פרופ' דוד מרגוליס

Department of Chemical Sciences  
Advisor: Prof. David Margulies

**Thesis:**  
Thiazole orange-peptide conjugate as a general platform to detect proteins and protein binding interactions



תום טלפיר  
Tom Talpir

המחלקה למדעי החיים  
בהדרכת פרופ' אלעד שניידמן

Department of Life Sciences  
Advisor: Prof. Elad Schneidman

**Thesis:**  
Identifying structural design principles that shape the computational abilities of small Recurrent Neural Networks



רעות ימיני  
Reut Yemini

המחלקה למדעי החיים  
בהדרכת ד"ר ניר פלומן

Department of Life Sciences  
Advisor: Dr. Nir Fluman

**Thesis:**  
Unveiling Novel Mechanisms of Tail-  
Anchored Membrane Protein Insertion in  
Escherichia coli



הדס יונג  
Hadas Yung

המחלקה למדעי החיים  
בהדרכת פרופ' רון מילוא

Department of Life Sciences  
Advisor: Prof. Ron Milo

**Thesis:**  
Towards Improving Growth Robustness in  
a Synthetic Autotrophic E. coli



אסתר יהודה  
Ester Yehuda

המחלקה למדעי הפיסיקה  
בהדרכת ד"ר רתם ארנון פרידמן

Department of Physical Sciences  
Advisor: Dr. Rotem Arnon Friedman

**Thesis:**  
Entropy in energy constraint protocols  
against a quantum adversary



נועה כהנא  
Noa Cahana

המחלקה למדעי הפיסיקה  
בהדרכת פרופ' נירית דודוביץ

Department of Physical Sciences  
Advisor: Prof. Nirit Dudovich

**Thesis:**  
Condensed matter attosecond  
phenomena



תמר כהן  
Tamar Cohen

המחלקה למדעי החיים  
בהדרכת פרופ' אורן שולדינר

Department of Life Sciences  
Advisor: Prof. Oren Schuldiner

**Thesis:**  
Exploring the Toll-Spz signaling pathway  
in the interaction between astrocytes and  
neurons during neuronal remodeling



איילין כהן  
Aileen Cohen

המחלקה למדעי החיים  
בהדרכת פרופ' נעמה ברקאי

Department of Life Sciences  
Advisor: Prof. Naama Barkai

**Thesis:**  
Structure-function analysis of Med15  
recruitment in cells revealed elements  
that direct genome binding independent  
of recruiting transcription factors



תמיר ירושלמי  
Tamir Yerushalmi

המחלקה למדעי החיים  
בהדרכת ד"ר דוד זאבי

Department of Life Sciences  
Advisor: Dr. David Zeevi

**Thesis:**  
Temperature-Driven Genomic  
Adaptations in Microbial Communities:  
A Study of k-mer Signatures and mRNA  
Stability



תומר יערי  
Tomer Yaari

המחלקה למדעי החיים  
בהדרכת ד"ר מיכל רמות

Department of Life Sciences  
Advisor: Dr. Michal Ramot

**Thesis:**  
Home-based olfactory biofeedback  
techniques for implicit learning to reduce  
sleep bruxism



אסף שלמה יעקבי שווילי  
Assaf Yaakobi

המחלקה למדעי החיים  
בהדרכת פרופ' תמיר קליין

Department of Life Sciences  
Advisor: Prof. Tamir Klein

**Thesis:**  
Impacts of tree species composition, soil  
properties, and microbial communities on  
forest soil organic carbon pools



אלון לוי  
Alon Levi

המחלקה למדעי הפיסיקה  
בהדרכת ד"ר נועם טל הוד

Department of Physical Sciences  
Advisor: Dr. Noam Tal Hod

**Thesis:**  
Development of machine-learning  
algorithms for event simulation in intense  
experimental backgrounds



מיכאיל לבנדיק  
Mikhail Labendik

המחלקה למדעי הפיסיקה  
בהדרכת פרופ' אלי זלדוב

Department of Physical Sciences  
Advisor: Prof. Eli Zeldov

**Thesis:**  
High-sensitivity imaging of electronic  
properties in moiré graphene



אביה כץ  
Aviya Katz

המחלקה למדעי החיים  
בהדרכת ד"ר משה ביטון

Department of Life Sciences  
Advisor: Dr. Moshe Biton

**Thesis:**  
Deciphering the role of Sectm1a and  
Sectm1b expression on gut epithelial cells  
in health and disease



שחר ליובינסקי  
Shahar Lyubinsky

המחלקה למדעי החיים  
בהדרת פרופ' גדעון שרייבר

Department of Life Sciences  
Advisor: Prof. Gideon Schreiber

**Thesis:**  
Developing an extracellular vesicle -based platform for the targeted delivery of small RNAs by inhalation



גינג ליו  
Jing Liu

המחלקה למדעי החיים  
בהדרת פרופ' נעמה ברקאי

Department of Life Sciences  
Advisor: Prof. Naama Barkai

**Thesis:**  
Engineering intrinsically disordered regions (IDRs) for guiding genome navigation



תומר לוי  
Tomer Levy

המחלקה למדעי החיים  
בהדרת פרופ' אורי אלון

Department of Life Sciences  
Advisor: Prof. Uri Alon

**Thesis:**  
Core genetic circuitry of budding yeast replicative aging dissected by survival curve shape



עילאי מגן  
Ilay Magen

המחלקה למדעי הפיסיקה  
בהדרת פרופ' רועי עוזרי

Department of Physical Sciences  
Advisor: Prof. Roei Ozeri

**Thesis:**  
Raman gates on trapped-ion qubits



אבירופ מג'ומדר  
Abhirup Majumdar

המחלקה למדעי הכימיה  
בהדרת פרופ' דוד מרגוליס

Department of Chemical Sciences  
Advisor: Prof. David Margulies

**Thesis:**  
Using turn-on fluorescent bacterial probes to detect small molecule-cell surface protein interactions in live cells



שחר מאיר  
Shachar Meir

המחלקה למתמטיקה ומדעי המחשב  
בהדרת פרופ' דוד פלג

Department of Mathematics and Computer Science  
Advisor: Prof. David Peleg

**Thesis:**  
Fault Resilient Computing with External Data



ניר יוסף מאי  
Nir Yosef May

המחלקה למדעי הפיסיקה  
בהדרת פרופ' ישראל בר

Department of Physical Sciences  
Advisor: Prof. Israel Bar-Joseph

**Thesis:**  
Electrically induced exciton transport in TMD heterostructures



קטרינה סופיה אירמה לנגה  
Katharina Sophia Irma Lange

המחלקה למדעי החיים  
בהדרת ד"ר דוד גוכמן

Department of Life Sciences  
Advisor: Dr. David Gokhman

**Thesis:**  
Uncovering the sequence variants that drove human evolution



רומי ליפשיץ  
Romi Lifshitz

המחלקה למתמטיקה ומדעי המחשב  
בהדרת פרופ' תומס וידיק

Department of Mathematics and Computer Science  
Advisor: Prof. Thomas Vidick

**Thesis:**  
Noise robust self-testing: Detecting non-locality in noisy non-local inputs



סמא מוראד  
Sama Murad

המחלקה למדעי החיים  
בהדרת פרופ' מיכל אייזנבך-שוורץ

Department of Life Sciences  
Advisor: Prof. Michal Schwartz

**Thesis:**  
Neuro-immune disruption: The brain-spleen axis and monocytes-microglia interactions in Alzheimer's disease



אדה מוטליו  
Eda Montalieu

המחלקה למדעי החיים  
בהדרת פרופ' יניב זיו

Department of Life Sciences  
Advisor: Prof. Yaniv Ziv

**Thesis:**  
Cell-level properties guiding spatial tuning stability



ניר מגרפטה  
Nir Magrafta

המחלקה למתמטיקה ומדעי המחשב  
בהדרת פרופ' צביקה ברקסקי

Department of Mathematics and Computer Science  
Advisor: Prof. Zvika Brakerski

**Thesis:**  
Quantum Pseudo-Randomness with Restricted Phases



סהר ראובן מלכה  
Sahar Malka

המחלקה למדעי הפיסיקה  
בהדרכת ד"ר ברק זכאי

Department of Physical Sciences  
Advisor: Dr. Barak Zackay

**Thesis:**  
High contrast imaging by PSF estimation  
based on atmospherically driven  
wavefront errors



ארטיום מכלין  
Artiom Makhlin

המחלקה למתמטיקה ומדעי המחשב  
בהדרכת פרופ' עדי שמיר

Department of Mathematics and  
Computer Science  
Advisor: Prof. Adi Shamir

**Thesis:**  
Speeding up the training of fully  
connected deep neural networks with  
data-driven initialization



רון מורן  
Ron Moran

המחלקה למתמטיקה ומדעי המחשב  
בהדרכת פרופ' אורי אלון

Department of Mathematics and  
Computer Science  
Advisor: Prof. Uri Alon

**Thesis:**  
Biological age shift and physiological  
dynamics during pregnancy and  
postpartum revealed by millions of lab  
tests



רועי ניצן  
Roei Nitzan

המחלקה למתמטיקה ומדעי המחשב  
בהדרכת פרופ' עדי שמיר

Department of Mathematics and  
Computer Science  
Advisor: Prof. Adi Shamir

**Thesis:**  
Can you trust facial recognition systems?



רנא אסתר נימן  
Renee Zacharowicz-Najman

המחלקה למדעי החיים  
בהדרכת פרופ' אהוד אחישר  
ד"ר ירדן כהן

Department of Life Sciences  
Advisors: Prof. Ehud Ahissar  
Dr. Yarden Cohen

**Thesis:**  
Drifting aimfully



בעז נוטקוביץ'  
Boaz Nutkovich

המחלקה למדעי הכימיה  
בהדרכת ד"ר איבו שפיגל

Department of Chemical Sciences  
Advisor: Dr. Ivo Spiegel

**Thesis:**  
Revealing the context-dependent  
experience gene regulation in the cortex



מריה נאומובה  
Mariia Naumova

המחלקה למדעי החיים  
בהדרכת ד"ר משה ביטון

Department of Life Sciences  
Advisor: Dr. Moshe Biton

**Thesis:**  
Identification of Antigens from  
Commensal and Pathogenic Gut Bacteria



יובל מרגלית  
Yuval Margalit

המחלקה למתמטיקה ומדעי המחשב  
בהדרכת פרופ' רונן בצרי

Department of Mathematics and  
Computer Science  
Advisor: Prof. Ronen Basri

**Thesis:**  
Querying kernel methods suffices for  
reconstructing their training data



שני מצגר  
Shani Metzger

המחלקה למדעי החיים  
בהדרכת פרופ' תמי גייגר

Department of Life Sciences  
Advisor: Prof. Tami Geiger

**Thesis:**  
Identifying targets by unraveling  
the mechanisms of resistance and  
aggressiveness in Ewing sarcoma



איבן סבוסטיאנוב  
Ivan Sevostianov

המחלקה למדעי הפיסיקה  
בהדרכת פרופ' עפר פינרמן

Department of Physical Sciences  
Advisor: Prof. Ofer Feinerman

**Thesis:**  
Synergy as the failure of distributivity



רנה סאלח  
Rana Saleh

המחלקה למדעי החיים  
בהדרכת פרופ' טוני פוטרמן

Department of Life Sciences  
Advisor: Prof. Tony Futerman

**Thesis:**  
Exploring the structure-function and  
evolutionary characteristics of ceramide  
synthases: A study using the mPROSS  
stability-design algorithm



אריאל נקב  
Ariel Nakav

המחלקה למדעי הפיסיקה  
בהדרכת פרופ' עופר פירסטנברג

Department of Physical Sciences  
Advisor: Prof. Ofer Firstenberg

**Thesis:**  
Scheme for generating photonic cluster  
states in a quantum nonlinear medium  
using ultracold Rydberg atoms



הדר סמרא  
Hadar Samra

המחלקה למדעי החיים  
בהדרכת פרופ' רותם שורק

Department of Life Sciences  
Advisor: Prof. Rotem Sorek

**Thesis:**  
Unraveling the sensory mechanisms  
of bacterial defense systems DSR1 and  
SEFIR against phage infections



יובל סלנט  
Yuval Salant

המחלקה למתמטיקה ומדעי המחשב  
בהדרכת פרופ' גל יהודה בנימיני

Department of Mathematics and  
Computer Science  
Advisor: Prof. Gal Binyamini

**Thesis:**  
(1) A bound for the volume of delta-  
separated delta-tubes contained in semi-  
algebraic varieties using o-minimality. (2)  
Transcendence results for trajectories of  
differential equations with the D-property.



מאהר סלהב  
Maher Salhab

המחלקה למדעי החיים  
בהדרכת פרופ' מייק פיינזילבר

Department of Life Sciences  
Advisor: Prof. Mike Fainzilber

**Thesis:**  
The Role of the N-Terminal Domain in the  
eIF5B translation initiation factor.



אריאל עמר  
Ariel Amar

המחלקה למתמטיקה ומדעי המחשב  
בהדרכת פרופ' יונינה אלדר

Department of Mathematics and  
Computer Science  
Advisor: Prof. Yonina Eldar

**Thesis:**  
Deep task-based beamforming for  
enhanced ultrasound imaging



דרור עינב  
Dror Einav

המחלקה למדעי הפיסיקה  
בהדרכת ד"ר זיו מאיר

Department of Physical Sciences  
Advisor: Dr. Ziv Meir

**Thesis:**  
The characterization of a linear Paul trap,  
towards molecular quantum control



שגיא עידן  
Sagi Idan

המחלקה למדעי החיים  
בהדרכת פרופ' אילן למפל

Department of Life Sciences  
Advisor: Prof. Ilan Lampl

**Thesis:**  
simultaneous measurement of  
excitatory and inhibitory conductances  
measurements in a single trial



יקיר עוז  
Yakir Oz

המחלקה למתמטיקה ומדעי המחשב  
בהדרכת פרופ' מיכל אירני

Department of Mathematics and  
Computer Science  
Advisor: Prof. Michal Irani

**Thesis:**  
Reconstructing data from models trained  
with transfer learning



לינא עבד אלחלים  
Lina Abd Alhlim

המחלקה למדעי החיים  
בהדרכת פרופ' אירית שגיא

Department of Life Sciences  
Advisor: Prof. Irit Sagi

**Thesis:**  
Exploring Cellular Dynamics and  
Mechanisms Associated with the Newly  
Discovered Endometriosis Biomarker  
MMP-7



מרירטה סקובורודקה  
Marharyta Skovorodka

המחלקה למדעי החיים  
בהדרכת ד"ר דניאל דר

Department of Life Sciences  
Advisor: Dr. Daniel Dar

**Thesis:**  
Exposing Interfilamentous Heterogeneity  
and Division-of-Labor in Multicellular  
Cyanobacteria Using Spatial  
Transcriptomics



קינן פורדוסו  
Keinan Poradosu

המחלקה למדעי החיים  
בהדרכת ד"ר ירון כהן

Department of Life Sciences  
Advisor: Dr. Yarden Cohen

**Thesis:**  
Interaction of past and future song  
elements reflected in canary premotor  
neural activity



ארי עשבי  
Ari Isbi

המחלקה למדעי החיים  
בהדרכת פרופ' אסף ורדי

Department of Life Sciences  
Advisor: Prof. Assaf Vardi

**Thesis:**  
Development and application of a  
bioreporter for investigating bacterial  
pathogenicity in phytoplankton-bacterial  
interaction



מור עצמון  
Mor Atzmon

המחלקה למדעי החיים  
בהדרכת ד"ר מיכל רמות

Department of Life Sciences  
Advisor: Dr. Michal Ramot

**Thesis:**  
Representational similarity analysis as a  
generalizable function for image coding in  
the brain



**דרור פחימה**  
Dror Pahima

המחלקה למדעי החיים  
בהדרכת פרופ' יעקב חנא

Department of Life Sciences  
Advisor: Prof. Jacob (Yaqub) Hanna

**Thesis:**  
Modeling early Pan troglodytes  
(chimpanzee) embryonic development



**איתן פורת**  
Eitan Porat

המחלקה למתמטיקה ומדעי המחשב  
בהדרכת פרופ' איתי בנימיני

Department of Mathematics and  
Computer Science  
Advisor: Prof. Itai Benjamini

**Thesis:**  
Diameter of Cayley Graphs Of Matrix  
Groups With Sufficiently Large Generating  
Sets



**מאיטריאה פורנפרטה**  
Maitreyee Purnapatre

המחלקה למדעי החיים  
בהדרכת פרופ' מיכל אייזנבך-שוורץ

Department of Life Sciences  
Advisor: Prof. Michal Schwartz

**Thesis:**  
Targeting hematopoiesis to alleviate  
neuropathology and improve cognitive  
functioning in Alzheimer's disease



**מעין פרסקי**  
Maayan Persky

המחלקה למדעי הכימיה  
בהדרכת פרופ' ארנסטו יוסלביץ

Department of Chemical Sciences  
Advisor: Prof. Ernesto Joselevich

**Thesis:**  
Guided 1D/2D mixed-dimensional  
heterostructures by van der Waals epitaxy:  
Sb<sub>2</sub>X<sub>3</sub> on ReX<sub>2</sub> (X = S, Se)



**רייצ'ל פריימן-שרעבי**  
Rachel Frieman-Sharabi

המחלקה למדעי החיים  
בהדרכת פרופ' שלו איצקוביץ

Department of Life Sciences  
Advisor: Prof. Shalev Itzkovitz

**Thesis:**  
Examining cell turnover patterns in  
Celiac Disease using biopsy and shed cell  
transcriptomics



**נעה פרידמן**  
Noa Frydman

המחלקה למדעי החיים  
בהדרכת פרופ' איגור אוליצקי

Department of Life Sciences  
Advisor: Prof. Igor Ulitsky

**Thesis:**  
High-throughput screening for functional  
elements in long noncoding RNA genes



**ניצן פריאנטה**  
Nitsan Pariente

המחלקה למדעי החיים  
בהדרכת פרופ' יעקב אברמסון

Department of Life Sciences  
Advisor: Prof. Jakub Abramson

**Thesis:**  
Mapping thymic mimetics and the role of  
Insm1 in their development and function



**סופי פיבکو**  
Sophie Piwko

המחלקה למדעי החיים  
בהדרכת פרופ' תמי גייגר

Department of Life Sciences  
Advisor: Prof. Tami Geiger

**Thesis:**  
Spatial proteomics of colorectal cancer



**יובל פיבן**  
Yuval Piven

המחלקה למדעי החיים  
בהדרכת ד"ר צליל אסט

Department of Life Sciences  
Advisor: Dr. Tsilil Ast

**Thesis:**  
Integrative multi-omics analysis of FXN  
and ABCB7 knockouts: Unveiling a novel  
role for mitochondrial tRNA synthetases  
as redox sensors



**דמיטרו קיסאלוב**  
Dmytro Kiselov

המחלקה למדעי הפיסיקה  
בהדרכת ד"ר אלכסנדר פודובני

Department of Physical Sciences  
Advisor: Dr. Alexander Poddubny

**Thesis:**  
Three-polariton interaction in cold  
Rydberg atom cloud



**יוליה קוטלובסקי**  
Yulia Kotlovski

המחלקה למדעי החיים  
בהדרכת פרופ' אלדד צחור

Department of Life Sciences  
Advisor: Prof. Eldad Tzahor

**Thesis:**  
Exploring immunopeptidomic-based  
therapeutics for the injured heart



**ענבר פרץ**  
Inbar Perets

המחלקה למדעי החיים  
בהדרכת ד"ר יואב ליבנה

Department of Life Sciences  
Advisor: Dr. Yoav Livneh

**Thesis:**  
The role of dopamine and thalamic  
visceral-sensory inputs to the insular  
cortex in need-driven behavior



עמוס הרץ שלמה קמינסקי  
Amos Hersz Shlomo Kaminski

המחלקה למתמטיקה ומדעי המחשב  
בהדרכת פרופ' דמיטרי גורביץ

Department of Mathematics and  
Computer Science  
Advisor: Prof. Dmitry Gourevitch

**Thesis:**  
Derived Stone Embedding



גדעון קמינגס  
Gideon Cummings

המחלקה למדעי החיים  
בהדרכת ד"ר אורלי לאופמן

Department of Life Sciences  
Advisor: Dr. Orly Laufman

**Thesis:**  
Elucidating the role of the enteroviral 3A  
protein in host organelle remodeling



אור ברנרד קליפה  
Or Bernard Kalifa

המחלקה למתמטיקה ומדעי המחשב  
בהדרכת פרופ' איתי בנימיני

Department of Mathematics and  
Computer Science  
Advisor: Prof. Itai Benjamini

**Thesis:**  
Thick embeddings into the Heisenberg  
group and coarse wirings into groups with  
polynomial growth



אביטל-אסתר רודוב  
Avital-Ester Rodov

המחלקה למדעי החיים  
בהדרכת פרופ' ניר יוסף

Department of Life Sciences  
Advisor: Prof. Nir Yosef

**Thesis:**  
NATIV: A robust and efficient method  
for trajectory inference using single-cell  
transcriptomics and lineage trees



נעם רודברג  
Noam Rudberg

המחלקה למדעי החיים  
בהדרכת פרופ' ערן הורנשטיין

Department of Life Sciences  
Advisor: Prof. Eran Hornstein

**Thesis:**  
Organellomics: AI-driven deep organellar  
phenotyping of perturbed human  
neurons



נוי רבנסרי  
Noy Ravensary

המחלקה למדעי החיים  
בהדרכת ד"ר ניר פלומן

Department of Life Sciences  
Advisor: Dr. Nir Fluman

**Thesis:**  
Deciphering the recognition of misfolded  
membrane proteins by the quality control  
protease FtsH



שגיא קריספין  
Sagy Krispin

המחלקה למדעי החיים  
בהדרכת פרופ' ערן הורנשטיין

Department of Life Sciences  
Advisor: Prof. Eran Hornstein

**Thesis:**  
Organellomics: AI-driven deep organellar  
phenotyping of perturbed human  
neurons



בנימין קרופקין  
Benjamin Krupkin

המחלקה למדעי החיים  
בהדרכת פרופ' נעמה ברקאי

Department of Life Sciences  
Advisor: Prof. Naama Barkai

**Thesis:**  
Unveiling DNA binding specificity  
determinants within the steroid nuclear  
receptors



נדב קנדל  
Nadav Kandel

המחלקה למדעי הפיסיקה  
בהדרכת פרופ' ברק דיין

Department of Physical Sciences  
Advisor: Prof. Barak Dayan

**Thesis:**  
Modeling photon-atom interactions for  
quantum information processing



תמר רוזנבוים כהן  
Tamar Rosenbaum Cohen

המחלקה למדעי החיים  
בהדרכת ד"ר איבו שפיגל

Department of Life Sciences  
Advisor: Dr. Ivo Spiegel

**Thesis:**  
Developing an experimental system  
for analysing experience-induced gene  
expression in the apical dendrites of  
cortical excitatory neurons



שרה רוזן  
Sara Rosen

המחלקה למדעי החיים  
בהדרכת פרופ' לירן שלוש

Department of Life Sciences  
Advisor: Prof. Liran Shlush

**Thesis:**  
Exploring genetic heterogeneity in  
hematopoiesis



אנה רודניצקי  
Anna Rudnitsky

המחלקה למדעי החיים  
בהדרכת ד"ר רנית קדמי

Department of Life Sciences  
Advisor: Dr. Ranit Kedmi

**Thesis:**  
Coordinated network of T cells and  
antigen presenting cells regulate  
tolerance to food



עומר רונין  
Omer Ronen

המחלקה למדעי החיים  
בהדרכת ד"ר דוד גוכמן

Department of Life Sciences  
Advisor: Dr. David Gokhman

**Thesis:**  
Uncovering human adaptations using  
saturation mutagenesis



רבקה רוטנמר  
Rebecca Rotnemer

המחלקה למדעי החיים  
בהדרכת ד"ר דביר גור

Department of Life Sciences  
Advisor: Dr. Dvir Gur

**Thesis:**  
Unraveling the Molecular Mechanism  
Driving Kidney Stone Formation



הלל רוזנברג-פוגלר  
Hallel Rosenberg-Fogler

המחלקה למדעי החיים  
בהדרכת פרופ' רות שרץ-שובל

Department of Life Sciences  
Advisor: Prof. Ruth Scherz-Shouval

**Thesis:**  
Dissecting the epigenetic chromatin  
landscape of cancer-associated  
fibroblasts in breast cancer



יובל שטיינברג  
Yuval Steinberg

המחלקה למדעי הכימיה  
בהדרכת פרופ' עודד אהרונסון

Department of Chemical Sciences  
Advisor: Prof. Oded Aharonson

**Thesis:**  
Physical Properties of Subsurface Water  
Ice Deposits in Mars's Mid-Latitudes from  
the Shallow Radar



איתמר שטיינברג  
Itamar Steinberg

המחלקה למדעי הפיסיקה  
בהדרכת ד"ר רתם ארנון פרידמן

Department of Physical Sciences  
Advisor: Dr. Rotem Arnon Friedman

**Thesis:**  
Distillable entanglement and DIQKD



שרון שטיין  
Sharon Stein

המחלקה למתמטיקה ומדעי המחשב  
בהדרכת פרופ' רוברט קראוטגמר

Department of Mathematics and  
Computer Science  
Advisor: Prof. Robert Krauthgamer

**Thesis:**  
Fast Algorithms for Separating  
Decompositions in High-Dimensional  
Euclidean Spaces



אחינעם שהם  
Achinoam Shoham

המחלקה למדעי החיים  
בהדרכת פרופ' נעמה ברקאי

Department of Life Sciences  
Advisor: Prof. Naama Barkai

**Thesis:**  
DNA binding preferences of the Steroid  
Nuclear Receptors (SRs) are guided by  
their disordered N-terminal domains  
(NTDs)



בן רפופרט  
Ben Rapoport

המחלקה למתמטיקה ומדעי המחשב  
בהדרכת פרופ' ברק דיין

Department of Mathematics and  
Computer Science  
Advisor: Prof. Barak Dayan

**Thesis:**  
A Platform for simulation and analysis of  
atomic cavity-QED experiments



עומר ריצ'מונד  
Omer Richmond

המחלקה למדעי החיים  
בהדרכת פרופ' עפר יזר

Department of Life Sciences  
Advisor: Prof. Ofer Yizhar

**Thesis:**  
A multiplexed optogenetic approach for  
studying the role of mPFC somatostatin  
interneurons in processing BLA input



נעה שימא  
Noa Shima

המחלקה למדעי החיים  
בהדרכת פרופ' אסף ורדי

Department of Life Sciences  
Advisor: Prof. Assaf Vardi

**Thesis:**  
Studying the effect of elevated  
temperature on algal-pathogen  
interactions in the marine environment



דנה שיינשין  
Dana Shainshein

המחלקה למדעי החיים  
בהדרכת ד"ר ליאת פני ינקלביץ קרן

Department of Life Sciences  
Advisor: Dr. Leeat Yankielowicz-Keren

**Thesis:**  
Applying deep learning methods for  
leveraging and analyzing multiplexed  
images



ג'יאמינג שי  
Jiaming Shi

המחלקה למדעי הפיסיקה  
בהדרכת ד"ר אלכסנדר פודובני

Department of Physical Sciences  
Advisor: Dr. Alexander Poddubny

**Thesis:**  
Multimer states in multilevel waveguide  
QED



**גאיה שניידר**  
**Gaya Schneider**

המחלקה למדעי החיים  
בהדרכת פרופ' אורן שולדינר

Department of Life Sciences  
Advisor: Prof. Oren Schuldiner

**Thesis:**  
Deciphering the mechanisms underlying  
zone-specific neural circuit wiring



**רותם שלו**  
**Rotem Shalev**

המחלקה למדעי הפיסיקה  
בהדרכת פרופ' עפר פינרמן

Department of Physical Sciences  
Advisor: Prof. Ofer Feinerman

**Thesis:**  
DPM-based entropy estimation



**ספיר שיר**  
**Sapir Shir**

המחלקה למדעי החיים  
בהדרכת פרופ' שלו איצקוביץ

Department of Life Sciences  
Advisor: Prof. Shalev Itzkovitz

**Thesis:**  
Spatial transcriptomics of the human  
gallbladder



**דניאל שר**  
**Danielle Serr**

המחלקה למדעי החיים  
בהדרכת פרופ' יעקב אברמסון

Department of Life Sciences  
Advisor: Prof. Jakub Abramson

**Thesis:**  
Characterization of extra thymic Aire  
expressing cells utilizing the novel Aire-  
ZsGreen reporter mice



**סושיל שנקר**  
**Susheel Shankar**

המחלקה למתמטיקה ומדעי המחשב  
בהדרכת פרופ' גל יהודה בנימיני

Department of Mathematics and  
Computer Science  
Advisor: Prof. Gal Binyamini

**Thesis:**  
Complex cellular decomposition



RECIPIENTS OF



# MSc

## without thesis in Science Teaching

Weizmann School of Science master's degree program without thesis in science teaching was launched in 2008, as a joint initiative between the Weizmann Institute and the Rothschild Caesarea Foundation. The mission of this program is to improve the quality of science and mathematics teaching in Israel, by encouraging excellence among educators and providing them with the skills needed for leadership, both in the classroom and beyond. The master's program is intended for outstanding teachers of math and science who already hold at least a first degree in biology, chemistry, mathematics, or physics.

This is a two-year framework in which participants—with the support and encouragement of the schools in which they teach—are expected to devote two full days each week to their studies, in parallel with their continued work in the classroom. The curriculum includes the enrichment of participants' basic scientific knowledge (discipline-specific and interdisciplinary topics) and familiarity with new developments in scientific research, the acquisition of innovative teaching skills and strategies, and participation in hands-on seminars in Weizmann Institute labs. The course curriculum, created specifically for this program, was designed to match the unique needs of science and math educators. Many of the classes are taught by members of the Weizmann Institute faculty.

Lareen Abo Fani  
Nebal Abutair  
Elad Amram  
Gal Amalia Arditi  
Doron Avidan  
Eli Azulai  
Ahmad Dabbah  
Navit Egozy  
Naama Elboher  
Ronen Haim Elmakies  
Merav Finfter  
Haim Hadad  
Shoshana Intract  
Shemuel Itzchak Lau  
Nava Karol Loew  
Maor Madmon  
Rasha Makhlof  
Shany Menashe  
Lubna Naser Aldeen  
Batya Naveh  
Alon Nicker  
Samira Rahal  
Gilam Roberto Roth  
Michal Rudnicki  
Esti Singer  
Tal Tanami Malka  
Dina Tsverin  
Naama Yaakobi  
Roman Zisman  
Christina Ziv



דורון אבידן  
Doron Avidan

תואר שני ללא תזה בהוראת המדעים  
MSc without thesis in Science Teaching



נבאל אבוטיר  
Nebal Abutair

תואר שני ללא תזה בהוראת המדעים  
MSc without thesis in Science Teaching



לרין אבו פני  
Lareen Abo Fani

תואר שני ללא תזה בהוראת המדעים  
MSc without thesis in Science Teaching



אסתר ינטה זינגר  
Esti Singer

תואר שני ללא תזה בהוראת המדעים  
MSc without thesis in Science Teaching



קריסטינה זיו  
Christina Ziv

תואר שני ללא תזה בהוראת המדעים  
MSc without thesis in Science Teaching



אחמד דבאח  
Ahmad Dabbah

תואר שני ללא תזה בהוראת המדעים  
MSc without thesis in Science Teaching



שושנה אינטרקט  
Shoshana Intract

תואר שני ללא תזה בהוראת המדעים  
MSc without thesis in Science Teaching



אלי אזולאי  
Eli Azulai

תואר שני ללא תזה בהוראת המדעים  
MSc without thesis in Science Teaching



נוית אגוזי  
Navit Egozy

תואר שני ללא תזה בהוראת המדעים  
MSc without thesis in Science Teaching



נעמה יעקובי  
Naama Yaakobi

תואר שני ללא תזה בהוראת המדעים  
MSc without thesis in Science Teaching



חיים חדד  
Haim Hadad

תואר שני ללא תזה בהוראת המדעים  
MSc without thesis in Science Teaching



רומן זיסמן  
Roman Zisman

תואר שני ללא תזה בהוראת המדעים  
MSc without thesis in Science Teaching



גל אמליה ארדיטי  
Gal Amalia Arditi

תואר שני ללא תזה בהוראת המדעים  
MSc without thesis in Science Teaching



רון חיים אלמקיס  
Ronen Haim Elmakies

תואר שני ללא תזה בהוראת המדעים  
MSc without thesis in Science Teaching



נעמה אלבוחר  
Naama Elboher

תואר שני ללא תזה בהוראת המדעים  
MSc without thesis in Science Teaching



מאור מדמון  
Maor Madmon

תואר שני ללא תזה בהוראת המדעים  
MSc without thesis in Science Teaching



נאוה קרול לוו  
Nava Karol Loew

תואר שני ללא תזה בהוראת המדעים  
MSc without thesis in Science Teaching



שמואל יצחק לאו  
Shemuel Itzchak Lau

תואר שני ללא תזה בהוראת המדעים  
MSc without thesis in Science Teaching



לובנא נאסר אלדין  
Lubna Naser Aldeen

תואר שני ללא תזה בהוראת המדעים  
MSc without thesis in Science Teaching



שני מנשה  
Shany Menashe

תואר שני ללא תזה בהוראת המדעים  
MSc without thesis in Science Teaching



ראשא מכלוף  
Rasha Makhlof

תואר שני ללא תזה בהוראת המדעים  
MSc without thesis in Science Teaching



טל תנעמי מלכא  
Tal Tanami Malka

תואר שני ללא תזה בהוראת המדעים  
MSc without thesis in Science Teaching



סמירה רחאל  
Samira Rahal

תואר שני ללא תזה בהוראת המדעים  
MSc without thesis in Science Teaching



גילעם רוברטו רוט  
Gilam Roberto Roth

תואר שני ללא תזה בהוראת המדעים  
MSc without thesis in Science Teaching



אלעד עמרם  
Elad Amram

תואר שני ללא תזה בהוראת המדעים  
MSc without thesis in Science Teaching



אלון ניקר  
Alon Nicker

תואר שני ללא תזה בהוראת המדעים  
MSc without thesis in Science Teaching



בתיה נוה  
Batya Naveh

תואר שני ללא תזה בהוראת המדעים  
MSc without thesis in Science Teaching



מיכל שלומית רודניקי  
Michal Rudnicki

תואר שני ללא תזה בהוראת המדעים  
MSc without thesis in Science Teaching



דינה צברין  
Dina Tserin

תואר שני ללא תזה בהוראת המדעים  
MSc without thesis in Science Teaching



מרב פינפטר  
Merav Finfter

תואר שני ללא תזה בהוראת המדעים  
MSc without thesis in Science Teaching

## With gratitude to the supporters of the Weizmann School of Science at the Weizmann Institute of Science

The Weizmann Institute of Science and the students and staff of the Weizmann School of Science are grateful to the many friends throughout the world who have generously funded the graduate studies program.

The Weizmann Institute created five Research Schools affiliated with its five Faculties to expand and enhance its graduate education. These strategic investments provide students with greater opportunities for personal development and independent research, expanded contact with the international science community, and even greater exposure to world leaders in their fields of study.

The **Lorry I. Lokey Research School of Biochemical Science** was established by California entrepreneur and philanthropist Lorry Lokey in 2007. It provides students in biochemistry, at all levels, with the tools and opportunities needed to excel.

Two brothers, Maurizio from Geneva and Solo from Milan, and their families founded the **Solo Dwek and Maurizio Dwek Research School of Chemical Science** in 2008 to provide students in chemical sciences necessities such as laptops, software, journal subscriptions, and conference travel expenses.

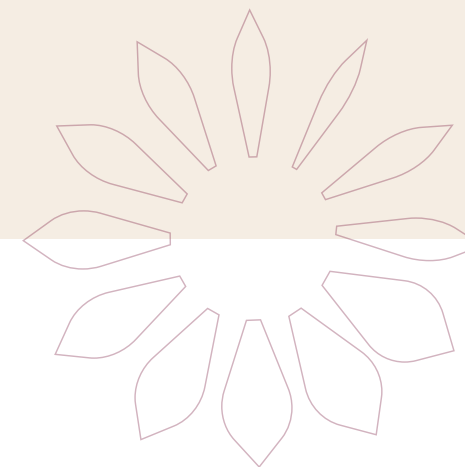
Former Chair of the International Board of the Weizmann Institute, financier Mandy Moross of London established the **Moross Research School for Mathematics and Computer Science** in 2009. The Moross Research School sponsors special guest lectures, student-led workshops, and other enrichment activities for students of mathematics and computer sciences.

The **Ekard Research School of Biological Sciences** was also established in 2009, through an anonymous donation from a member of the Weizmann Institute International Board. The Ekard School provides funding to attract guest lecturers and visiting scientists working in emerging areas of biology.

The **André Deloro Research School of Physical Science** was established in 2013 by the Adelis Foundation, founded by French entrepreneur and philanthropist André Deloro. The Deloro Research School works in tandem with the André Deloro Institute for Space and Optics Research at the Weizmann Institute to explore the nature of the universe from the smallest particles to the most distant galaxies.

**The David Lopatie Fellows** Up to four David Lopatie Fellows are selected each year by the Dean of the Feinberg Graduate School from among the new MSc students in the regular track. They are selected based on exceptional academic performance in their undergraduate studies. The prestigious award includes a personal travel allowance for scientific meetings, workshops, and more.

Scholarships are precious gifts—in essence, gifts of knowledge. They enable our students to concentrate on their studies, freeing them to devote their full energies to coursework and laboratory research. This steadfast encouragement has borne fruit among the many scientists throughout the world who began their careers at the Weizmann Institute. Today's graduates are tomorrow's scientific leaders.



2025 WEIZMANN מכון  
ויצמן SCHOOL OF  
SCIENCE למדע ::::