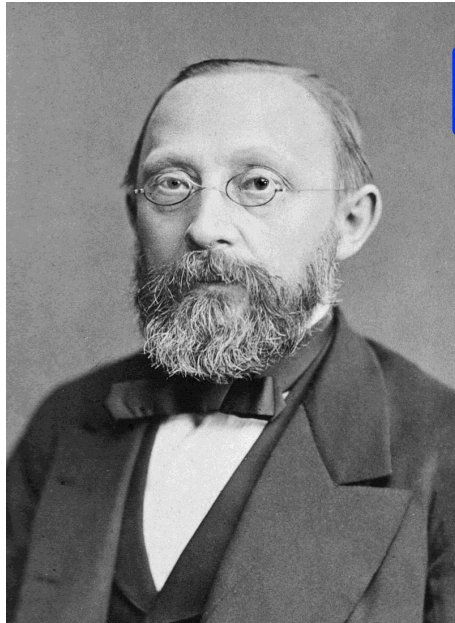
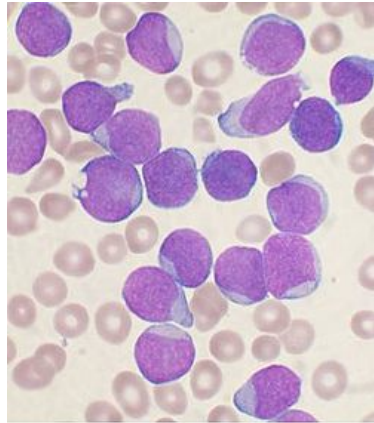


Rudolf Ludwig Carl Virchow 1821-1902



Germany

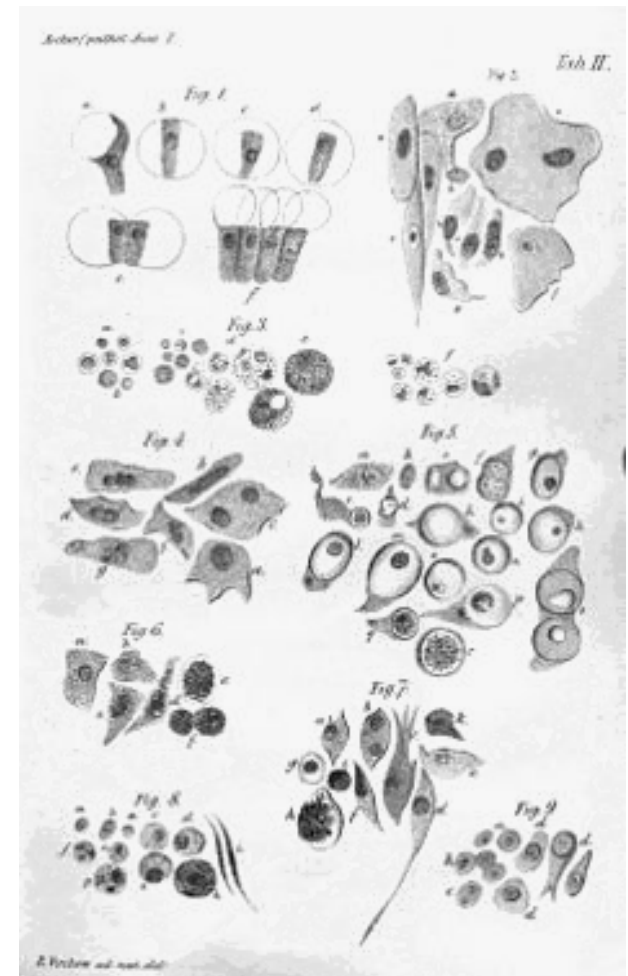
Identified blood cancer
leukemia



Cell divides into more cells.
Reiterated Robert Remak
without citing him.

Resisted bacteria
As disease causing:
Disease is tissues
malfunction, and
bacteria grow in
them.
Refused to wash
hands before
medical treatment.

Cell theory
According to
Theodor Schwann



CELL ORIGINATE FROM CELL

Resisted Darwin's evolution theory, and Neanderthal man
As the origin of all humanity.

Denied skull measurements as race criterion:
Collected data to deny separation of Arians and Jews.